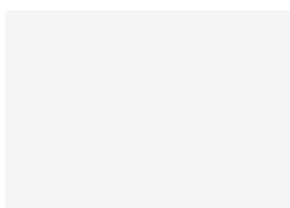
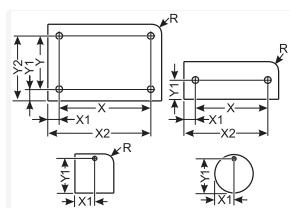
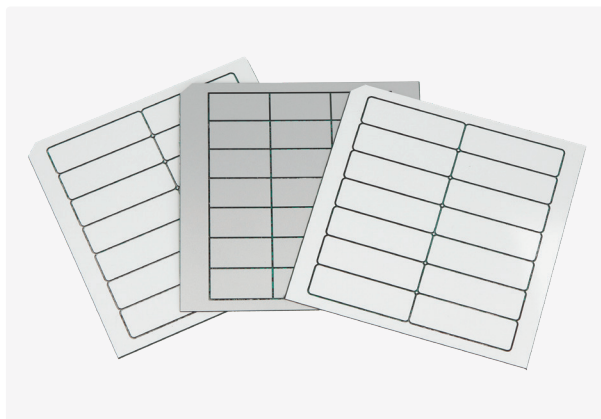




LM Rectangular without radius



Product information

Laser Mat is a double-layer material with a UV resistant, colored outer layer for marking with a Murrplastik laser system.

- Custom configuration
- Various colours
- Different geometries and holes
- Three different carrier materials available
- Thickness: 0.8 mm.

A suction and filter unit is absolutely necessary to comply with legal regulations on health protection.

Information, conformities and approvals



Article	Order No.	Color	Material thickness mm	Printable area mm	No. characters/ lines	No. per Frame	Software Article	PU pcs.
LM 100x30 HF	8610200421	White / Black						
LM 100x50 SK	8610200445	White / Black						
LM 120x45 HF	8610200420	White / Black						
LM 120x59 HF	8610200433	White / Black						
LM 19x42 SK	8610200435	Siemens silver / Black						
Rectangular design								
LM 100x40 SK	8610200476	White / Black	0.8	100 x 40	55 / 11	2	OTS	8
LM 105x37 SKS	8610200468	Siemens silver / Black	0.8	105 x 37	58 / 10	3	OTE	12
LM 110x25 HF	8610200370	Siemens silver / Black	0.8	110 x 25	61 / 7	4	OB6	16



LM Rectangular without radius

Article	Order No.	Color	Material thickness mm	Printable area mm	No. characters/ lines	No. per Frame	Software Article	PU pcs.
LM 110x55 HF	8610200369	Siemens silver / Black	0.8	110 x 55	61 / 16	2	OB5	8
LM 114x50 SK	8610200446	White / Black	0.8	114 x 50	63 / 14	2	OR6	8
LM 120x58 SK	8610200376	White / Black	0.8	120 x 58	66 / 17	2	OC9	8
LM 120x59,5 SK	8610200453	Yellow / Black	0.8	120 x 59.5	66 / 17	2	OS5	8
LM 120x59,5 SK	8610200454	White / Black	0.8	120 x 59.5	66 / 17	2	OS6	8
LM 13x20 SK	8610200471	White / Black	0.8	13 x 20	7 / 5	40	OT1	160
LM 15x5 HF	8610200403	White / Black	0.8	15 x 5	8 / 1	140	O19	140
LM 16,5x27,5 SK	8610200461	Siemens silver / Black	0.8	16.5 x 27.5	9 / 8	24	OT3	96
LM 17x15 HF	8610200404	White / Black	0.8	17 x 15	9 / 4	42	OJ0	168
LM 17x6 SK	8610200393	White / Black	0.8	17 x 6	9 / 1	102	OH7	408
LM 19,9x55 SK	8610200381	Siemens silver / Black	0.8	19.9 x 55	11 / 16	10	OD8	40
LM 25x10 HF	8610200375	White / Black	0.8	25 x 10	13 / 2	40	OC7	160
LM 26,7x10 SK	8610200423	White / Black	0.8	26.7 x 10	14 / 2	40	ON1	160
LM 27x8 HF	8610200419	Yellow / Black	0.8	27 x 8	15 / 2		OM7	208
LM 28x28 SK	8610200488	Yellow / Black	0.8	28 x 28	15 / 8	16	OUG	64
LM 29,5x10 SK	8610200427	Siemens silver / Black	0.8	29.5 x 10	16 / 2	44	OO2	176
LM 29x9 SK	8610200451	White / Black	0.8	29 x 9	16 / 2	33	OS2	132
LM 29x9,5 HF	8610200371	White / Black	0.8	29 x 9.5	16 / 2	33	OCO	132
LM 30x15 HF	8610200390	Yellow / Black	0.8	30 x 15	16 / 4	21	OG7	84
LM 30x15 HF	8610200374	White / Black	0.8	30 x 15	16 / 4	21	OC6	84



LM Rectangular without radius

Article	Order No.	Color	Material thickness mm	Printable area mm	No. characters/ lines	No. per Frame	Software Article	PU pcs.
LM 30x8 SKS	8610200505	White / Black	0.8	30 x 8	16 / 2	39	OY6	156
LM 30x9 SK	8610200479	Siemens silver / Black	0.8	30 x 9	16 / 2	33	OTY	132
LM 33x8 SKS	8610200472	Yellow / Black	0.8	33 x 8	18 / 2	39	OTM	156
LM 33x8 SKS	8610200473	White / Black	0.8	33 x 8	18 / 2	39	OTN	156
LM 50x20 SK	8610200452	Yellow / Black	0.8	50 x 20	27 / 5	10	OS4	40
LM 50x25 SKS	8610200489	White / Black	0.8	50 x 25	27 / 7	8	OVK	32
LM 50x27 SK	8610200441	Yellow / Black	0.8	50 x 27	27 / 7	8	OQ8	32
LM 50x27 SK	8610200442	White / Black	0.8			8	OQ9	32
LM 59,5x10 SK	8610200477	Siemens silver / Black	0.8	59.5 x 10	33 / 2	10	OTT	40
LM 60x20 HF	8610200383	White / Black	0.8	60 x 20	33 / 5	5	OFO	20
LM 70x20 SK	8610200469	Siemens silver / Black	0.8	70 x 20	38 / 5	5	OTF	20
LM 70x55 SK	8610200449	White / Black	0.8	70 x 20	38 / 5	2	OR9	8
LM 90x10 SK	8610200429	Siemens silver / Black	0.8	90 x 10	50 / 2	10	004	40
LM 96x15 SK	8610200444	Yellow / Black	0.8			7	OR1	28
LM 10x80 SKS	8610200529	Siemens silver / Black	0.8	10 x 80	5 / 23	10	PAG	40
LM 110x55 SK	8610200533	White / Black	0.8	110 x 55	61 / 16	2	PA0	8
LM 120x120 SKS	8610200235	White / Black	0.8	120 x 120	66 / 35	1	MQ8	4
LM 35x17 SKS	8610200528	White / Black	0.8	35 x 17	19 / 5	18	PAD	72
LM 40x10 SK	8610200553	White / Black	0.8	40 x 10	22 / 2		PB4	80
LM 45x30 SK	8610200535	White / Black	0.8	45 x 30	25 / 8	6	POQ	24



LM Rectangular without radius

Article	Order No.	Color	Material thickness mm	Printable area mm	No. characters/ lines	No. per Frame	Software Article	PU pcs.
LM 50x50 SK	8610200534	White / Black	0.8	50 x 50	27 / 14	4	POP	16
LM 64x15 SK	8610200527	White / Black	0.8	64 x 15	35 / 4	7	PAB	28
LM 70x10 SK	8610200531	White / Black	0.8	70 x 10	38 / 2	10	PAL	40
LM 70x18 SK	8610200532	White / Black	0.8	70 x 18	38 / 5	6	PAN	24
LM 80x30 SK	8610200475	White / Black	0.8	80 x 30	44 / 8	3	OTR	12
LM 9x20 SK	8610200537	Siemens silver / Black	0.8	9 x 20	5 / 5	55	POT	220
LM 9x26 SK	8610200145	Siemens silver / Black	0.8	9 x 26	5 / 7	44	L7L	176
LM 9,5x4,5 SKS	8610200224	White / Black	0.8	9.5 x 4.5	5 / 1	242	M08	968
LM 10x10 SK	8610200322	White / Black	0.8	10 x 10	5 / 2	100	NM8	400
LM 12,5x17 HF	8610200318	Siemens silver / Black	0.8	12.5 x 17	6 / 5	48	NLO	192
LM 12x8 SK	8610200307	White / Black	0.8	12 x 8	6 / 2	117	NI9	468
LM [°] 13x37 SKS	8610200130	White / Black	0.8	13 x 37	7 / 10	24	L4X	96
LM 15x27 SK	8610200189	White / Black	0.8	15 x 27	8 / 7	28	M67	112
LM 15x49 SK	8610200188	White / Black	0.8	15 x 49	8 / 14	14	M66	56
LM 17x9 SK	8610200222	Yellow / Black	0.8	17 x 9	9 / 2	66	M06	264
LM 18,5x9,5 SK	8610200009	Siemens silver / Black	0.8	18.5 x 9.5	10 / 2	55	L98	220
LM 19x59,5 HF	8610200289	White / Black	0.8	19 x 59.5	10 / 17	12	ND9	48
LM 20x10 SK	8610200323	White / Black	0.8	20 x 10	11 / 2	50	NM9	200
LM 20x120 SK	8610200336	White / Black	0.8	20 x 120	11 / 35	5	N02	20
LM 22x10 SK	8610200003	Siemens silver / Black	0.8	22 x 10	12 / 2	50	L92	200



LM Rectangular without radius

Article	Order No.	Color	Material thickness mm	Printable area mm	No. characters/ lines	No. per Frame	Software Article	PU pcs.
LM 22x10 SK	8610200020	White / Black	0.8	22 x 10	12 / 2	50	L18	200
LM 22x11 SK	8610200302	Siemens silver / Black	0.8	22 x 11	12 / 3	45	NH5	180
LM 22x17 SKS	8610200236	White / Black	0.8	22 x 17	12 / 5	30	M09	120
LM 22x22 SK	8610200002	Siemens silver / Black	0.8	22 x 22	12 / 6	25	L91	100
LM 25x5 SK	8610200179	White / Black	0.8	25 x 5	13 / 1	80	ME5	320
LM 25x8 SK	8610200180	White / Black	0.8	25 x 8	13 / 2	52	ME6	208
LM 25x10 HF	8610200354	Siemens silver / Black	0.8	25 x 10	13 / 2	44	NU2	176
LM 25x15 SK	8610200305	White / Black	0.8	25 x 15	13 / 4	28	NI5	112
LM [°] 25x48 SKS	8610200131	White / Black	0.8	25 x 48	13 / 14	8	L4Y	32
LM [°] 25x75 SKS	8610200133	White / Black	0.8	25 x 75	13 / 22	4	L5A	16
LM [°] 25x75 SKS	8610200132	Yellow / Black	0.8	25 x 75	13 / 22	4	L4Z	16
LM 27x8 HF	8610200115	Siemens silver / Black	0.8	27 x 8	15 / 2	52	L3M	208
LM 27x8 SK	8610200340	Siemens silver / Black	0.8	27 x 8	15 / 2	52	NP0	208
LM 27x12 SK	8610200187	White / Black	0.8	27 x 12	15 / 3	36	M65	144
LM 27x12,5 SKS	8610200219	Siemens silver / Black	0.8	27 x 12,5	15 / 3	32	M03	128
LM 27x15 HF	8610200256	Siemens silver / Black	0.8	27 x 15	15 / 4	28	MV9	112
LM 27x15 SK	8610200064	White / Black	0.8	27 x 15	15 / 4	28	LU2	112
LM 27x15 SKS	8610200364	White / Black	0.8	27 x 15	15 / 4	28	NW8	112
LM 27x18 HF	8610200043	Siemens silver / Black	0.8	27 x 18	15 / 5	24	LP9	96



LM Rectangular without radius

Article	Order No.	Color	Material thickness mm	Printable area mm	No. characters/ lines	No. per Frame	Software Article	PU pcs.
LM 27x18 HF	8610200084	White / Black	0.8	27 x 18	15 / 5	24	LZ6	96
LM 27x18 SK	8610200004	Siemens silver / Black	0.8	27 x 18	15 / 5	24	L93	96
LM 27x18 SK	8610200152	Yellow / Black	0.8	27 x 18	15 / 5	24	L8B	96
LM 27x36 SK	8610200346	White / Black	0.8	27 x 36	15 / 10	12	NQ7	48
LM 28x15 HF	8610200073	White / Black	0.8	28 x 15	15 / 4	21	LW0	84
LM 28x16 HF	8610200129	Siemens silver / Black	0.8	28 x 16	15 / 4	18	L4P	72
LM 28x17,5 SK	8610200019	Siemens silver / Black	0.8	28 x 17,5	15 / 5	18	M33	72
LM 28x17,5 SKS	8610200292	Siemens silver / Black	0.8	28 x 17,5	15 / 5	18	NE2	72
LM 30x5 SK	8610200116	White / Black	0.8	30 x 5	16 / 1	60	L3N	240
LM 30x5 SKS	8610200247	White / Black	0.8	30 x 5	16 / 1	60	MT9	240
LM 30x10 SK	8610200181	White / Black	0.8	30 x 10	16 / 2	30	ME7	120
LM 30x12 SK	8610200324	White / Black	0.8	30 x 12	16 / 3	27	NN0	108
LM 30x15 HF	8610200016	Siemens silver / Black	0.8	30 x 15	16 / 4	21	M30	84
LM [°] 30x15 SK	8610200028	Siemens silver / Black	0.8	30 x 15	16 / 4	21	LN5	84
LM 30x15 SK	8610200325	White / Black	0.8	30 x 15	16 / 4	21	NN1	84
LM 30x20 SKS	8610200266	White / Black	0.8	30 x 20	16 / 5	15	MZ7	60
LM 30x30 SK	8610200326	White / Black	0.8	30 x 30	16 / 8	9	NN2	36
LM 35x6 SK	8610200066	White / Black	0.8	35 x 6	19 / 1	51	LU4	204
LM 36,5x18 HF	8610200139	Siemens silver / Black	0.8	36.5 x 18	20 / 5	18	L6R	72



LM Rectangular without radius

Article	Order No.	Color	Material thickness mm	Printable area mm	No. characters/ lines	No. per Frame	Software Article	PU pcs.
LM 40x7,1 HF	8610200347	White / Black	0.8	40 x 7.1	22 / 2	14	NQ8	112
LM 40x7,3 HF	8610200027	White / Black	0.8	40 x 7.3	22 / 2	28	LM2	112
LM 40x9 HF	8610200055	Siemens silver / Black	0.8	40 x 9	22 / 2	22	LS7	88
LM 40x9 SK	8610200185	Siemens silver / Black	0.8	40 x 9	22 / 2	22	MF9	88
LM 40x15 SK	8610200327	White / Black	0.8	40 x 15	22 / 4	14	NN3	56
LM 40x15 SK	8610200210	Yellow / Black	0.8	40 x 15	22 / 4	14	MM7	56
LM 40x20 SK	8610200328	White / Black	0.8	40 x 20	22 / 5	10	NN4	40
LM 40x20 SKS	8610200275	Siemens silver / Black	0.8	40 x 20	22 / 5	10	NB1	40
LM 40x20 SKS	8610200044	White / Black	0.8	40 x 20	22 / 5	10	LQ0	40
LM 40x20 SKS	8610200044	White / Black	0.8	40 x 20	22 / 5	10	LQ0	40
LM 40x35 HF	8610200251	White / Black	0.8	40 x 35	22 / 10	6	MV4	24
LM 44,5x7,1 HF	8610200287	Yellow / Black	0.8	44.5 x 7.1	24 / 2	28	ND4	112
LM 44,5x7,1 SK	8610200294	Yellow / Black	0.8	44.5 x 7.1	24 / 2	28	NF5	112
LM 45x12 SK	8610200184	White / Black	0.8	45 x 12	25 / 3	18	MF0	72
LM 45x14 SK	8610200164	Siemens silver / Black	0.8	45 x 14	25 / 4	14	L9T	56
LM 45x15 SKS	8610200220	Siemens silver / Black	0.8	45 x 15	25 / 4	14	M04	56
LM 45x25 SKS	8610200221	Siemens silver / Black	0.8	45 x 25	25 / 7	8	M05	32
LM 45,4x15,1 HF	8610200250	Siemens silver / Black	0.8	45.4 x 15.1	25 / 4	14	MV3	56
LM 45,4x15,1 HF	8610200194	White / Black	0.8	45.4 x 15.1	25 / 4	14	MK6	56



LM Rectangular without radius

Article	Order No.	Color	Material thickness mm	Printable area mm	No. characters/ lines	No. per Frame	Software Article	PU pcs.
LM 45,4x15,1 HF	8610200193	Yellow / Black	0.8	45.4 x 15.1	25 / 4	14	MK5	56
LM 45,5x14 SK	8610200249	Siemens silver / Black	0.8	45.5 x 14	25 / 4	14	MV2	56
LM 48x18 SK	8610200269	White / Black	0.8	48 x 18	26 / 5	12	NA2	48
LM 48x23 HF	8610200258	White / Black	0.8	48 x 23	26 / 6	8	MW1	32
LM 50x20 SK	8610200330	White / Black	0.8	50 x 20	27 / 5	10	NN6	40
LM 50x25 SK	8610200065	White / Black	0.8	50 x 25	27 / 7	8	LU3	32
LM 50x30 SK	8610200142	Siemens silver / Black	0.8	50 x 30	27 / 8	6	L7H	24
LM [°] 50x30 SK	8610200121	White / Black	0.8	50 x 30	27 / 8	6	L3W	24
LM 50x50 SK	8610200005	Siemens silver / Black	0.8	50 x 50	27 / 14	4	L94	16
LM 50x80 SK	8610200297	Yellow / Black	0.8	50 x 80	27 / 23	2	NF9	8
LM 52x26 SK	8610200308	White / Black	0.8	52 x 26	28 / 7	8	NJ1	32
LM 54x26 SK	8610200160	Siemens silver / Black	0.8	54 x 26	30 / 7	8	L9P	32
LM 54x26 SK	8610200161	Yellow / Black	0.8	54 x 26	30 / 7	8	L9Q	32
LM 55x15 SK	8610200209	Siemens silver / Black	0.8	55 x 15	30 / 4	14	MM4	56
LM 55x15 SK	8610200218	White / Black	0.8	55 x 15	30 / 4	14	M02	56
LM 55x19 SKS	8610200077	White / Black	0.8	55 x 19	30 / 5	10	LY0	40
LM 56x27 SKS	8610200362	White / Black	0.8	56 x 27	31 / 7	8	NW2	32
LM 60x15 HF	8610200270	White / Black	0.8	60 x 15	33 / 4	7	NA3	28
LM 60x20 SK	8610200146	Siemens silver / Black	0.8	60 x 20	33 / 5	5	L7T	20
LM 60x20 SK	8610200331	White / Black	0.8	60 x 20	33 / 5	5	NN7	20



LM Rectangular without radius

Article	Order No.	Color	Material thickness mm	Printable area mm	No. characters/ lines	No. per Frame	Software Article	PU pcs.
LM 60x20 SK	8610200182	White / Black	0.8	60 x 20	33 / 5	5	ME8	20
LM 60x30 SK	8610200183	White / Black	0.8	60 x 30	33 / 8	3	ME9	12
LM 60x30 SK	8610200285	Yellow / Black	0.8	60 x 30	33 / 8	3	ND2	12
LM 60x40 SK	8610200147	Yellow / Black	0.8	60 x 40	33 / 11	2	L7U	8
LM 61,4x15,4 SK	8610200244	Siemens silver / Black	0.8	61.4 x 15.4	34 / 4	7	MS8	28
LM 66x24 SK	8610200006	Siemens silver / Black	0.8	66 x 24	36 / 7	4	L95	16
LM 66x33 SK	8610200007	Siemens silver / Black	0.8	66 x 33	36 / 9	3	L96	12
LM 66x33 SKS	8610200293	Siemens silver / Black	0.8	66 x 33	36 / 9	3	NE3	12
LM 70x15 SKS	8610200274	White / Black	0.8	70 x 15	38 / 4	7	NA7	28
LM 70x18 SK	8610200148	Siemens silver / Black	0.8	70 x 18	38 / 5	6	L7V	24
LM 70x40 HF	8610200252	White / Black	0.8	70 x 40	38 / 11	2	MV5	8
LM 70x55 HF	8610200319	White / Black	0.8	70 x 55	38 / 16	2	NL1	8
LM 74x26 HF	8610200337	White / Black	0.8	74 x 26	41 / 7	4	N03	16
LM 74x37 SKS	8610200061	Siemens silver / Black	0.8	74 x 37	41 / 10	3	LT7	12
LM 74x45 HF	8610200342	Siemens silver / Black	0.8	74 x 45	41 / 13	2	N01	8
LM 80x20 SK	8610200334	White / Black	0.8	80 x 20	44 / 5	5	N00	20
LM 80x25 SK	8610200284	White / Black	0.8	80 x 25	44 / 7	4	NC9	16
LM 80x60 SK	8610200156	Siemens silver / Black	0.8	80 x 60	44 / 17	1	L8Y	4
LM 84,5x23,9 SK	8610200248	Siemens silver / Black	0.8	84.5 x 23.9	46 / 7	4	MV1	16



LM Rectangular without radius

Article	Order No.	Color	Material thickness mm	Printable area mm	No. characters/ lines	No. per Frame	Software Article	PU pcs.
LM 85x25 HF	8610200290	White / Black	0.8	85 x 25	47 / 7	4	NE0	16
LM 85x25 HF	8610200291	Yellow / Black	0.8	85 x 25	47 / 7	4	NE1	16
LM [°] 90x30 SKS	8610200135	Yellow / Black	0.8	90 x 30	50 / 8	3	L5C	12
LM 95x9 SK	8610200023	White / Black	0.8	95 x 9	52 / 2	11	LL3	44
LM [°] 95x45 SK	8610200098	Siemens silver / Black	0.8	95 x 45	52 / 13	2	LOZ	8
LM [°] 95x120 SK	8610200069	White / Black	0.8	95 x 120	52 / 35	1	LV1	4
LM [°] 98x48 SK	8610200008	Siemens silver / Black	0.8	98 x 48	54 / 14	2	L97	8
LM 100x35 SK	8610200273	White / Black	0.8	100 x 35	55 / 10	3	NA6	12
LM 100x46 SK	8610200299	White / Black	0.8	100 x 46	55 / 13	2	NG1	8
LM 100x46 SK	8610200298	Yellow / Black	0.8	100 x 46	55 / 13	2	NG0	8
LM 100x50 SK	8610200149	Siemens silver / Black	0.8	100 x 50	55 / 14	2	L7W	8
LM 100x50 HF	8610200246	White / Black	0.8	100 x 50	55 / 14	2	MT4	8
LM 100x50 SK	8610200137	Yellow / Black	0.8	100 x 50	55 / 14	2	L6A	8
LM 100x60 SK	8610200357	White / Black	0.8	100 x 60	55 / 17	1	NV2	4
LM 100x70 SK	8610200355	White / Black	0.8	100 x 70	55 / 20	1	NV0	4
LM 100x70 SK	8610200356	Yellow / Black	0.8	100 x 70	55 / 20	1	NV1	4
LM 100x80 HF	8610200155	Siemens silver / Black	0.8	100 x 80	55 / 23	1	L8V	4
LM 100x100 SK	8610200358	White / Black	0.8	100 x 100	55 / 29	1	NV3	4
LM 105x25 SK	8610200359	White / Black	0.8	105 x 25	58 / 7	1	NV4	16
LM 110x35 HF	8610200350	Yellow / Black	0.8	110 x 35	61 / 10	3	NS8	12



LM Rectangular without radius

Article	Order No.	Color	Material thickness mm	Printable area mm	No. characters/ lines	No. per Frame	Software Article	PU pcs.
LM 112x20 SK	8610200162	Siemens silver / Black	0.8	112 x 20	62 / 5	5	L9R	20
LM 114x35 SK	8610200170	White / Black	0.8	114 x 35	63 / 10	3	MC6	12
LM° 114x50 SKS	8610200134	White / Black	0.8	114 x 50	63 / 14	2	L5B	8
LM 120x35 SK	8610200344	White / Black	0.8	120 x 35	66 / 10	3	NQ3	12
LM 120x38 HF	8610200317	White / Black	0.8	120 x 38	66 / 11	3	NK9	12
LM 120x59,5 SKS	8610200279	Siemens silver / Black	0.8	120 x 59.5	66 / 17	2	NB8	8
LM 120x80 SK	8610200286	White / Black	0.8	120 x 80	66 / 23	1	ND3	4
LM° 120x120 HF	8610200046	Siemens silver / Black	0.8	120 x 120	66 / 35	1	LQ5	4
LM° 120x120 HF	8610200104	White / Black	0.8	120 x 120	66 / 35	1	L1H	4
LM° 120x120 HF	8610200103	Yellow / Black	0.8	120 x 120	66 / 35	1	L1G	4
LM° 120x120 SK	8610200047	Siemens silver / Black	0.8	120 x 120	66 / 35	1	LQ6	4
LM° 120x120 SK	8610200094	White / Black	0.8	120 x 120	66 / 35	1	LOT	4
LM 120x120 SK	8610200102	Yellow / Black	0.8	120 x 120	66 / 35	1	L1F	4
LM° 120x120 SKS	8610200048	Siemens silver / Black	0.8	120 x 120	66 / 35	1	LQ7	4

Material properties



Laser Mat (LM) |

Adhesive properties



467, 5016 SK adhesive film with adhesive, SKS adhesive film with foam adhesive



LM Rectangular without radius

Thermal properties



Temperature / temperature range -20 °C – 85 °C

Technical information



UV-resistant acc. to ISO 4892-2

General technical data



° Standard product, available from stock

Labelling technology



Laser devices