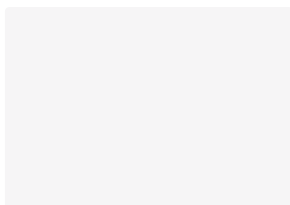
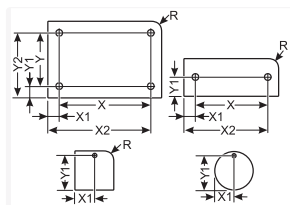
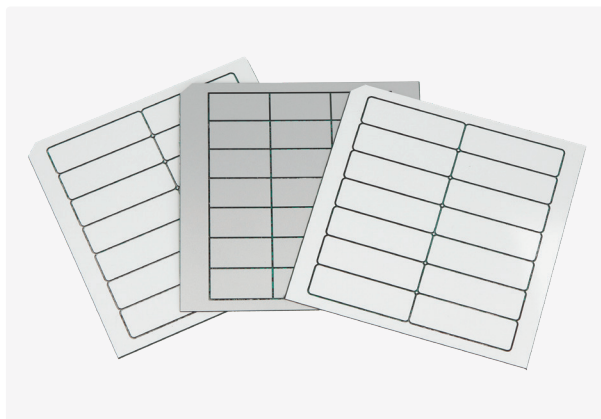




## LM Rectangular without radius, 2x hole



### Product information

Laser Mat is a double-layer material with a UV resistant, colored outer layer for marking with a Murrplastik laser system.

- Custom configuration
- Various colours
- Different geometries and holes
- Three different carrier materials available
- Thickness: 0.8 mm.

A suction and filter unit is absolutely necessary to comply with legal regulations on health protection.

### Information, conformities and approvals



Article	Order No.	Color	Material thickness mm	Printable area mm	No. characters/lines	Hole patterns Number x Ø mm	No. per Frame	Software Article	Article	PU pcs.
<b>Rectangular design with 2 holes</b>										
LM 100x28 SK, 2x3,0MM	8610200388	White / Black	0.8	91 x 28	50 / 8	2x 3.0	3	0G6		12
LM 110x26 HF, 2x2,0MM	8610200368	White / Black	0.8	100 x 26	55 / 7	2x 2.0	4	0A6		16
LM 120x120 HF, 2x3,5MM	8610200482	Siemens silver / Black	0.8	106 x 120	58 / 35	2x 3.5	1	0U7		4
LM 35x6 SK, 2x3,0MM	8610200067	White / Black	0.8	26 x 6	14 / 1	2x 3.0	51	LU5		204
LM 38x15 SK, 2x3,0MM	8610200385	White / Black	0.8	29 x 15	16 / 4	2x 3.0	14	0G3		56
LM 40x15 SK, 2x3,2MM	8610200377	Siemens silver / Black	0.8	30.4 x 15	16 / 4	2x 3.2	14	0D1		56
LM 50x30 HF, 2x2,0MM	8610200391	White / Black	0.8	44 x 30	24 / 8	2x 2.0	6	0H4		24
LM 55x25 SK, 2x3,0MM	8610200386	White / Black	0.8	46 x 25	25 / 7	2x 3.0	8	0G4		32



## LM Rectangular without radius, 2x hole

Article	Order No.	Color	Material thickness mm	Printable area mm	No. characters/lines	Hole patterns Number x Ø mm	No. per Frame	Software Article	PU pcs.
LM 60x20 HF, 2x3,0MM	8610200408	Siemens silver / Black	0.8	48 x 20	26 / 5	2x 3.0	5	OK4	20
LM 70x25 SK, 2x3,0MM	8610200360	White / Black	0.8	61 x 25	33 / 7	2x 3.0	4	NV5	16
LM 80x25 SK, 2x3,0MM	8610200387	White / Black	0.8	71 x 25	39 / 7	2x 3.0	4	OG5	16
LM 27x20 HF, 2x3,0MM	8610200511	Yellow / Black	0.8	17 x 20	9 / 5	2x 3.0	20	OZ4	80
LM 30x50 HF, 2x3,1MM	8610200512	Siemens silver / Black	0.8	30 x 43	16 / 12	2x 3.1	6	OZD	24
LM 30x8 HF, 2x3,0MM	8610200510	White / Black	0.8	17 x 8	9 / 2	2x 3.0	39	OZ3	156
LM 36x15 SKS, 2x2,2MM	8610200536	Siemens silver / Black	0.8	27.2 x 15	15 / 4	2x 2.2	21	POS	84
LM 36x30 HF, 2x3,0MM	8610200508	Yellow / Black	0.8	25 x 30	13 / 8	2x 3.0	9	OZ1	36
LM 37x13 HF, 2x3,8MM	8610200524	Siemens silver / Black	0.8	52.2 x 13	29 / 3	2x 3,8	24	PA4	96
LM 40x15 SK, 2x3,0MM	8610200515	Siemens silver / Black	0.8	27 x 15	15 / 4	2x 3.0	14	OZR	56
LM 50x30 HF, 2x3,0MM	8610200509	White / Black	0.8	37 x 30	20 / 8	2x 3.0	9	OZ2	24
LM 50x30 HF, 2x3,2MM	8610200506	White / Black	0.8	38.8 x 30	21 / 8	2x 3.0	6	OYN	24
LM 60x50 HF, 2x3,0MM	8610200507	Yellow / Black	0.8	47 x 50	26 / 14	2x 3.0	2	OZ0	8
LM 70x10 SK, 2x4,0MM	8610200530	White / Black	0.8	56 x 10	31 / 2	2x 4.0	10	PAK	40
LM 27x11 SK, 2x3,2MM	8610200090	White / Black	0.8	11 x 11	6 / 3	2x 3.2	36	LOB	144
LM 27x12,5 SK, 2x3,0MM	8610200093	Siemens silver / Black	0.8	12 x 12.5	6 / 3	2x 3.0	32	LOQ	128
LM 30x14 HF, 2x3,0MM	8610200257	White / Black	0.8	15 x 14	8 / 4	2x 3.0	21	MW0	84
LM 30x15 SK, 2x2,0MM	8610200114	Siemens silver / Black	0.8	20 x 15	11 / 4	2x 2.0	21	LZ1	84
LM 35x6 SK, 2x3,0MM	8610200085	White / Black	0.8	22 x 6	12 / 1	2x 3.0	51	LZ9	204



## LM Rectangular without radius, 2x hole

Article	Order No.	Color	Material thickness mm	Printable area mm	No. characters/lines	Hole patterns Number x Ø mm	No. per Frame	Software Article	PU pcs.
LM 35x15 HF, 2x2.5MM	8610200175	Siemens silver / Black	0.8	22.5 x 15	12 / 4	2x 2.5	21	MD6	84
LM 35x15 HF, 2x3.5MM	8610200176	White / Black	0.8	17.5 x 15	9 / 4	2x 3.5	21	MD7	84
LM 35x15 HF, 2x3.5MM	8610200186	White / Black	0.8	20.5 x 15	11 / 4	2x 3.5	21	MG4	84
LM 40x10 HF, 2x3.0MM	8610200056	Siemens silver / Black	0.8	24 x 10	13 / 2	2x 3.0	20	LS8	80
LM 40x10 HF, 2x3.5MM	8610200050	Siemens silver / Black	0.8	24 x 10	13 / 2	2x 3.5	20	LR4	80
LM 40x20 SK, 2x2.8MM	8610200026	Siemens silver / Black	0.8	26 x 20	14 / 5	2x 2.8	10	LM0	40
LM 45x20 SK, 2x0.5MM	8610200037	White / Black	0.8	36 x 20	20 / 5	2x 0.5	10	L07	40
LM 48x14 HF, 2x3.0MM	8610200312	White / Black	0.8	33 x 14	18 / 4	2x 3.0	14	NJ8	56
LM 48x15 SK, 2x3,75MM	8610200213	White / Black	0.8	30.5 x 15	16 / 4	2x 3.75	14	MN6	56
LM 48x38 HF, 2x3.0MM	8610200259	White / Black	0.8	33 x 38	18 / 11	2x 3.0	4	MW2	16
LM 50x12 HF, 2x3,3MM	8610200165	White / Black	0.8	33.4 x 12	18 / 3	2x 3.3	18	MA1	72
LM 50x20 SK, 2x2,0MM	8610200329	Siemens silver / Black	0.8	40 x 20	22 / 5	2x 2.0	10	NN5	40
LM 50x20 HF, 2x3.0MM	8610200075	White / Black	0.8	24 x 20	13 / 5	2x 3.0	10	LW6	40
LM 50x20 SK, 2x3.2MM	8610200091	White / Black	0.8	34 x 20	18 / 5	2x 3.2	10	LOC	40
LM 50x20 HF, 2x3.5MM	8610200282	Siemens silver / Black	0.8	39.5 x 20	21 / 5	2x 3.5	10	NC7	40
LM 50x40 HF, 2x3.5MM	8610200054	White / Black	0.8	38 x 40	21 / 11	2x 3.5	4	LR8	16
LM 50x40 HF, 2x3.5MM	8610200283	Siemens silver / Black	0.8	32.5 x 40	18 / 11	2x 3.5	4	NC8	16
LM 52x26 HF, 2x3.0MM	8610200260	White / Black	0.8	37 x 26	20 / 7	2x 3.0	8	MW3	32
LM 55x23 HF, 2x3.5MM	8610200051	White / Black	0.8	43 x 23	23 / 6	2x 3.5	8	LR5	32

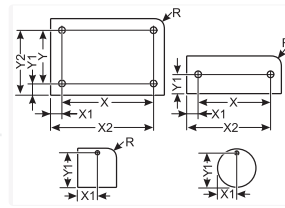


## LM Rectangular without radius, 2x hole

Article	Order No.	Color	Material thickness mm	Printable area mm	No. characters/lines	Hole patterns Number x Ø mm	No. per Frame	Software Article	PU pcs.
LM 59x14 SKS, 2x2,0MM	8610200237	White / Black	0.8	49 x 14	27 / 4	2x 2.0	7	MR0	28
LM 60x14 HF, 2x3.0MM	8610200261	White / Black	0.8	45 x 14	25 / 4	2x 3.0	7	MW4	28
LM 70x20 SK, 2x3,75MM	8610200190	White / Black	0.8	52.5 x 20	29 / 5	2x 3.75	5	MH5	20
LM 70x20 SK, 2x3,75MM	8610200214	Yellow / Black	0.8	52.5 x 20	29 / 5	2x 3.75	5	MN7	20
LM 72x14 HF, 2x3.0MM	8610200263	White / Black	0.8	57 x 14	31 / 4	2x 3.0	7	MW7	28
LM 72x19 HF, 2x3,2MM	8610200264	White / Black	0.8	55.6 x 19	30 / 5	2x 3.2	5	MZ2	20
LM 72x30 SK, 2x3.2MM	8610200267	White / Black	0.8	55.6 x 30	30 / 8	2x 3.2	3	MZ8	12
LM 72x35 SK, 2x3.2MM	8610200268	White / Black	0.8	55.6 x 35	30 / 10	2x 3.2	3	MZ9	12
LM 73x31 SKS, 2x2,0MM	8610200238	White / Black	0.8	63 x 31	35 / 9	2x 2.0	3	MR1	12
LM 74x37 HF, 2x3.0MM	8610200255	White / Black	0.8	59 x 37	32 / 10	2x 3.0	3	MV8	12
LM 74x45 HF, 2x3,3MM	8610200166	White / Black	0.8	57.4 x 45	31 / 13	2x 3.3	1	MA2	8
LM 75x15 SK, 2x0,5MM	8610200036	White / Black	0.8	66 x 15	36 / 4	2x 0.5	7	L06	28
LM 90x27 HF, 2x4,5MM	8610200171	Siemens silver / Black	0.8	67 x 27	37 / 7	2x 4.5	4	MC7	16
LM 95x23 HF, 2x3.5MM	8610200052	White / Black	0.8	83 x 23	46 / 6	2x 3.5	4	LR6	16
LM 96x14 HF, 2x3.0MM	8610200262	White / Black	0.8	81 x 14	45 / 4	2x 3.0	7	MW5	28
LM 100x25 HF, 2x3,3MM	8610200150	Yellow / Black	0.8	84.4 x 25	46 / 7	2x 3.3	4	L7Y	16
LM 100x50 SK, 2x2,0MM	8610200335	Siemens silver / Black	0.8	90 x 50	50 / 14	2x 2.0	2	N01	8
LM 100x80 HF, 2x3.5MM	8610200053	White / Black	0.8	88 x 80	48 / 23	2x 3.5	1	LR7	4
LM 120x35 SK, 2x2,0MM	8610200345	White / Black	0.8	106 x 35	58 / 10	2x 2.0	3	N04	12
LM 120x59,5 HF, 2x3,5MM	8610200281	Siemens silver / Black	0.8	102.5 x 59.5	56 / 17	2x 3.5	2	NC6	8



## LM Rectangular without radius, 2x hole

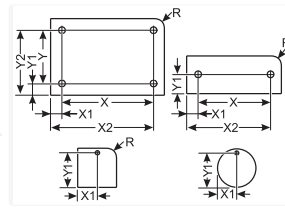


### Laser labelling material dimensions table

Article	Order No.	Outside radius R mm	Drill hole pitch X mm	Drill hole pitch Y mm	Drill hole position X1 mm	Drill hole position Y1 mm	Drill hole position X2 mm	Drill hole position Y2 mm
<b>Rectangular design with 2 holes</b>								
LM 100x28 SK, 2x3,0MM	8610200388		91		4.5	14	95.5	
LM 110x26 HF, 2x2,0MM	8610200368		100		5	13	105	
LM 120x120 HF, 2x3,5MM	8610200482		109.5		5.25	60	114.75	
LM 35x6 SK, 2x3,0MM	8610200067		26		4.5	3	30.5	
LM 38x15 SK, 2x3,0MM	8610200385		29		4.5	7.5	33.5	
LM 40x15 SK, 2x3,2MM	8610200377		30.4		5	7.5	35	
LM 50x30 HF, 2x2,0MM	8610200391		44		3	15	47	
LM 55x25 SK, 2x3,0MM	8610200386		46		4.5	12.5	50.5	
LM 60x20 HF, 2x3,0MM	8610200408		51		4.5	10	55.5	
LM 70x25 SK, 2x3,0MM	8610200360		61		4.5	12.5	65.5	
LM 80x25 SK, 2x3,0MM	8610200387		71		4.5	12.5	75.5	
LM 27x20 HF, 2x3,0MM	8610200511		20		3.5	10	23.5	
LM 30x50 HF, 2x3,1MM	8610200512			46	15	2		48
LM 30x8 HF, 2x3,0MM	8610200510	0.8						
LM 36x15 SKS, 2x2,2MM	8610200536		29.4		3.3	7.5	32.7	
LM 36x30 HF, 2x3,0MM	8610200508		28		4	15	32	
LM 37x13 HF, 2x3,8MM	8610200524		29		4		33	6.5
LM 40x15 SK, 2x3,0MM	8610200515		30		5	7.5	35	
LM 50x30 HF, 2x3,0MM	8610200509		40		5	15	45	
LM 50x30 HF, 2x3,2MM	8610200506		42		4	15	46	



## LM Rectangular without radius, 2x hole

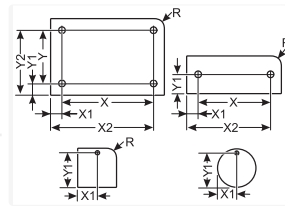


### Laser labelling material dimensions table

Article	Order No.	Outside radius R mm	Drill hole pitch X mm	Drill hole pitch Y mm	Drill hole position X1 mm	Drill hole position Y1 mm	Drill hole position X2 mm	Drill hole position Y2 mm
LM 60x50 HF, 2x3,0MM	8610200507		50		5	25	55	
LM 70x10 SK, 2x4,0MM	8610200530		60		5	5	65	
LM 27x11 SK, 2x3,2MM	8610200090		17.4		4.8	5.5	22.2	
LM 27x12,5 SK, 2x3.0MM	8610200093		18		4.5	6.25	22.5	
LM 30x14 HF, 2x3.0MM	8610200257		21		4.5	7	25.5	
LM 30x15 SK, 2x2,0MM	8610200114		24		3	7.5	27	
LM 35x6 SK, 2x3.0MM	8610200085		28		3.5	3	31.5	
LM 35x15 HF, 2x2,5MM	8610200175		27.5		3.75	7.5	31.25	
LM 35x15 HF, 2x3.5MM	8610200176		24.5		5.25	7.5	29.75	
LM 35x15 HF, 2x3.5MM	8610200186		27.5		3.75	7.5	31.25	
LM 40x10 HF, 2x3.0MM	8610200056		30		5	5	35	
LM 40x10 HF, 2x3.5MM	8610200050		32.5		3.75	5	36.25	
LM 40x20 SK, 2x2.8MM	8610200026		31.6		4.2	10	35.8	
LM 45x20 SK, 2x0,5MM	8610200037		38		3.5	10	41.5	
LM 48x14 HF, 2x3,0MM	8610200312		39		4.5	7	43.5	
LM 48x15 SK, 2x3,75MM	8610200213		38		5	7.5	43	
LM 48x38 HF, 2x3.0MM	8610200259		39		4.5	19	43.5	
LM 50x12 HF, 2x3,3MM	8610200165		40		5	6	45	
LM 50x20 SK, 2x2,0MM	8610200329		44		3	10	47	
LM 50x20 HF, 2x3.0MM	8610200075		30		10	15	40	
LM 50x20 SK, 2x3.2MM	8610200091		40.4		4.8	10	45.2	
LM 50x20 HF, 2x3.5MM	8610200282		39.5		5.25	10	44.75	



## LM Rectangular without radius, 2x hole

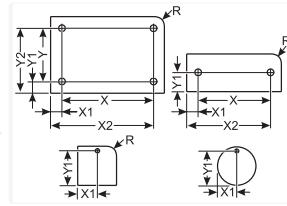


### Laser labelling material dimensions table

Article	Order No.	Outside radius R mm	Drill hole pitch X mm	Drill hole pitch Y mm	Drill hole position X1 mm	Drill hole position Y1 mm	Drill hole position X2 mm	Drill hole position Y2 mm
LM 50x40 HF, 2x3.5MM	8610200054		45		2.5	20	47.5	
LM 50x40 HF, 2x3.5MM	8610200283		39.5		5.25	20	44.75	
LM 52x26 HF, 2x3.0MM	8610200260		43		4.5	13	47.5	
LM 55x23 HF, 2x3.5MM	8610200051		50		2.5	11.5	52.5	
LM 59x14 SKS, 2x2.0MM	8610200237		53		3	7	56	
LM 60x14 HF, 2x3.0MM	8610200261		51		4.5	7	55.5	
LM 70x20 SK, 2x3.75MM	8610200190		60		5	10	65	
LM 70x20 SK, 2x3.75MM	8610200214		60		5	10	65	
LM 72x14 HF, 2x3.0MM	8610200263		63		4.5	7	67.5	
LM 72x19 HF, 2x3.2MM	8610200264		62		5	9.5	67	
LM 72x30 SK, 2x3.2MM	8610200267		62		5	15	67	
LM 72x35 SK, 2x3.2MM	8610200268		62		5	15	67	
LM 73x31 SKS, 2x2.0MM	8610200238		67		3	15.5	70	
LM 74x37 HF, 2x3.0MM	8610200255		65		4.5	18.5	69.5	
LM 74x45 HF, 2x3.3MM	8610200166		64		5	22.5	69	
LM 75x15 SK, 2x0.5MM	8610200036		68		3.5	7.5	71.5	
LM 90x27 HF, 2x4.5MM	8610200171		76		7	13.5	83	
LM 95x23 HF, 2x3.5MM	8610200052		90		2.5	11.5	92.5	
LM 96x14 HF, 2x3.0MM	8610200262		87		4.5	7	91.5	
LM 100x25 HF, 2x3.3MM	8610200150		91		4.5	12.5	95.5	
LM 100x50 SK, 2x2.0MM	8610200335		94		3	25	97	
LM 100x80 HF, 2x3.5MM	8610200053		95		2.5	40	97.5	



## LM Rectangular without radius, 2x hole



### Laser labelling material dimensions table

Article	Order No.	Outside radius R mm	Drill hole pitch X mm	Drill hole pitch Y mm	Drill hole position X1 mm	Drill hole position Y1 mm	Drill hole position X2 mm	Drill hole position Y2 mm
LM 120x35 SK, 2x2,0MM	8610200345		110		5	17.5	115	
LM 120x59,5 HF, 2x3,5MM	8610200281		109.5		5.25	29.75	114.75	

### Material properties



Laser Mat (LM) |

### Adhesive properties



467, 5016 SK adhesive film with adhesive, SKS adhesive film with foam adhesive

### Thermal properties



Temperature / temperature range -20 °C – 85 °C

### Technical information



UV-resistant acc. to ISO 4892-2

### General technical data



° Standard product, available from stock

### Assembly method



Riveting system



Screw system





## LM Rectangular without radius, 2x hole

### Labelling technology



Laser devices