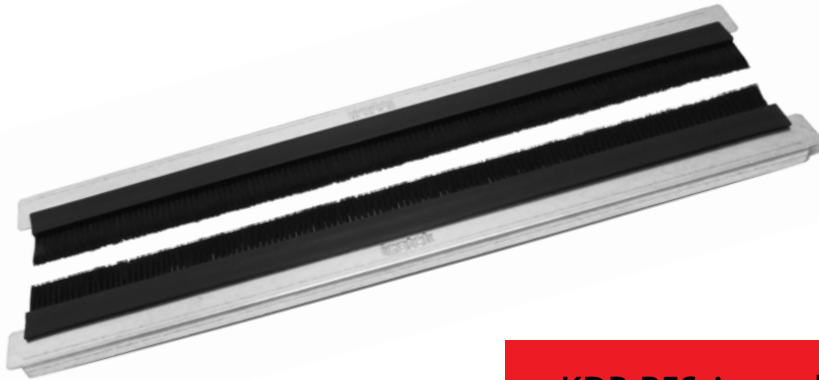


KDR-BES

Enclosure Base Plate with Brush Grommets



For standard cut-outs:
KEL-BES - see page 57

KDR-BES Assembly

Product Description

The new 2-piece enclosure base plates KDR-BES are supplied with preassembled brush grommets.

The base plates are installed with standard Rittal clips.

Depending on the maximum cable diameter to be routed, the 2 halves of the brush base plate are aligned further or closer to each other.

The base plates KDR-BES are perfect for protection of the enclosure interiors against rough dirt.

Advantages and Notes

- During assembly, almost the complete base of the enclosure can be used for installation of cables.
- Retrofitting possible without disconnecting cables. Everything can be built around the cables.
- The base plates KDR-BES are designed for Rittal enclosures TS8. Other sizes can be supplied on request.

Specifications

Material	Base plate: Sheet steel, zinc-plated Brush grommets: Polyamide (PA)
Temperature Properties	- 20°C to + 90°C (static) Halogen free, silicone free

Accessories

ZL Strain relief plates 80 - 84



KDR-BES

Enclosure Base Plate with Brush Grommets



Type	Enclosure type	Enclosure width	Total length base plate	Sight size of base plate opening	Order No.
KDR-BES-TS8-600	TS8	600 mm	458 mm	436 mm	58000
KDR-BES-TS8-800	TS8	800 mm	658 mm	636 mm	58006
KDR-BES-TS8-1000	TS8	1000 mm without division bar	858 mm	836 mm	58012
KDR-BES-TS8-1200	TS8	1200 mm*	518 mm	496 mm	58018

* in case both fields of the enclosure are equipped, 2 complete base plates are necessary.