

KGM

Locknuts



Click to shop online @ www.trimantec.com or call 336-767-1379



Type KGM: Standard nut, plastic



Type KGM: SUB-D9, PB, SUB-D25



Type GMT: Split locknut

Product Description

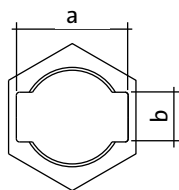
Hexagonal locknut with metric threads for attaching components together.

For routing SUB-D, DVI or PROFIBUS connectors in combination with the split cable glands KVT / QVT, special locknuts with cut-outs are required:

KGM-SUB-D9 fits D-Sub 9 connectors
(Required wall cut-out: \varnothing 36 mm)

KGM-PB fits DVI and PROFIBUS connectors
(Required wall cut-out: \varnothing 42 mm)

KGM-SUB-D25 fits SUB-D25 connectors
(Required wall cut-out: \varnothing 50 mm)



Specifications

Material	Polyamide (PA) / Polycarbonate (PC) / Brass (BR), nickel-plated
Color	<input type="checkbox"/> gray (similar RAL 7035) <input type="checkbox"/> black
Flame class	UL94-Vo, self-extinguishing
Temperature Properties	- 30°C to + 120°C Halogen free, silicone free

Fits with

KVT, KVT-SNAP, KVT-W90	
Split cable glands	31 - 36
QVT Split cable glands	52
KEL-DPZ Cable entry plates	68 - 69
KEL-DPF Cable entry grommets	75

Thread	Type	Order No.	Material	Height [mm]	Wrench size	Diagonal [mm]	Cut-out a×b [mm]	PU
--------	------	-----------	----------	-------------	-------------	---------------	------------------	----

Type KGM: Standard nut, plastic

M16 × 1.5	KGM 16	<input type="checkbox"/> 52272 <input type="checkbox"/> 52283	PA	4.3	SW 22.8	28.2	-	10
M20 × 1.5	KGM 20	<input type="checkbox"/> 52273 <input type="checkbox"/> 52283	PA	7	SW 26	28.2	-	10
M25 × 1.5	KGM 25	<input type="checkbox"/> 52274 <input type="checkbox"/> 52284	PA	7	SW 32	36	-	10
M32 × 1.5	KGM 32	<input type="checkbox"/> 52275 <input type="checkbox"/> 52285	PA	7	SW 41	46	-	10
M40 × 1.5	KGM 40	<input type="checkbox"/> 52276 <input type="checkbox"/> 52286	PA	7	SW 50	56	-	10
M50 × 1.5	KGM 50	<input type="checkbox"/> 52277 <input type="checkbox"/> 52287	PA	8.6	SW 60	66	-	10
M63 × 1.5	KGM 63	<input type="checkbox"/> 52278 <input type="checkbox"/> 52288	PA	8.6	SW 75	83	-	5

Type KGM: PB, SUB-D9, SUB-D25

M32 × 1.5	KGM-SUB-D9	<input type="checkbox"/> 45105 <input type="checkbox"/> 45106	PC	7	SW 41	46	35 × 16	10
M40 × 1.5	KGM-PB	<input type="checkbox"/> 45107 <input type="checkbox"/> 45109	PC	8	SW 50	55	43 × 17	10
M50 × 1.5	KGM-SUB-D25	<input type="checkbox"/> 45108 <input type="checkbox"/> 45110	PC	8	SW 60	66	55 × 16	10

Type GMT: Split locknut

M20 × 1.5	GMT 20	<input type="checkbox"/> 31110	PA	9	SW 27	29	-	10
M25 × 1.5	GMT 25	<input type="checkbox"/> 31100	PA	9	SW 32	35	-	10
M32 × 1.5	GMT 32	<input type="checkbox"/> 31120	PA	12	SW 40	44	-	10
M50 × 1.5	GMT 50	<input type="checkbox"/> 31140	PA	15	SW 63	69	-	10

* Only valid for gray product types