

# Additional Products

The DM8000 is an economical microprocessor-based digital tachometer system capable of measuring shaft speeds lower than 1 RPM. The display is field programmable via the easy-to-use front panel interface. Large 1/2 inch 4-digit LED display numbers allow viewing under the most adverse conditions. The DM8000 is actually four devices in one:

- Tachometer • Counter • Totalizer • Zero Speed Switch

The isolated 5 Amp form C relay output may be configured for many alarm, preset count and logic conditions. A single device may be shared by two speed inputs and the displayed toggled - saving cost and space.

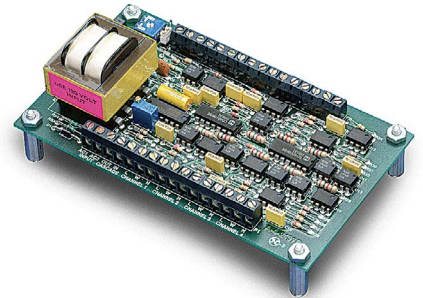


DM8000

*For more information visit:*

<http://www.dartcontrols.com/product-guide/programmable-tachometers/>

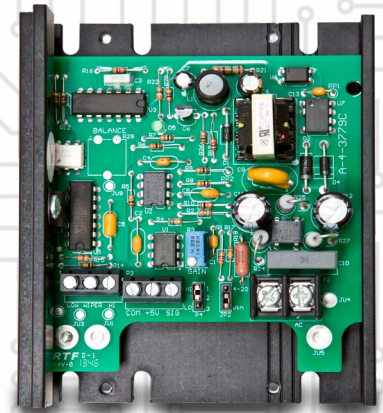
The MSC38 is a Master Speed Control device which takes a single speed pot input and replicates it to eight isolated output channels. Each channel output may be scaled to achieve proportional control of multiple synchronized drives. The high impedance, isolated output channels will not load the connected drive's circuit.



*For more information visit:*

<http://www.dartcontrols.com/product-guide/accessories/msc38a/>

The VSI2 provides isolation and signal conversion for applications where drives are connected to supervisory systems such as plc's and SCADA's. The VSI2 offers both analog voltage (+5 to +250VDC) and current (4-20mA) signal input capability. These inputs are scaled and sent to the speed pot circuit on any drive that accepts a 3-wire speed pot input.



VSI2

## RoHS

