

Accessories—One-Touch Fittings

One-touch fittings---tube-tube type



Product feature

1. Variable models can be widely used in every kind of pneumatic systems.
2. High circulation performance: bear the same flow with the volume of the tubing inside diameter.
3. Connect tubing easily and conveniently. The tubing connection portion is safe and durable.
4. The threaded portion is covered with sealant and the M5 thread is attached with a sealing gasket to prevent air leakage over the connection thread portion.
5. The nickel plated body is anti-corrosion and anti-pollution, which allows a broader application.

Table for interface port and tube O.D.

Product series	Port size	Port size	Port size	Port size	Port size
	Φ4	Φ6	Φ8	Φ10	Φ12
PE, PY, PV, PU, PM, PLM, PP, PZ	●	●	●	●	●

Product series	Port size I	Port size II	Port size II	Port size II	Port size II
	Φ4	Φ6	Φ8	Φ10	Φ12
PG	Φ4	●			
	Φ6	●			
	Φ8	●	●		
	Φ10		●	●	
	Φ12			●	●
PEG	Φ4				
	Φ6	●			
	Φ8		●		
	Φ10			●	
PEW	Φ4				
	Φ6	●			
	Φ8		●		
	Φ10			●	
PYW	Φ4				
	Φ6	●			
	Φ8		●		
	Φ10			●	
PGJ	Φ4				
	Φ6	●			
	Φ8	●	●		
	Φ10		●	●	
PZG	Φ4				
	Φ6	●			
	Φ8		●		
	Φ10			●	
PKG	Φ4				
	Φ6	●			
	Φ8		●		
	Φ10			●	
PHK	Φ4				
	Φ6		●		
	Φ8			●	
	Φ10			●	
PHD	Φ4				
	Φ6		●		
	Φ8			●	
	Φ10			●	

Specification

Operating pressure range	0~9kgf/cm ² (0~0.9MPa)
Negative pressure	-750mmHg(10Torr)
Proof pressure	1.5MPa
Ambient and fluid temperature (°C)	0~60
Applicable tubing	Soft nylon or polyurethane
Color	Grey/black

Ordering code

Same diameter type fittings: PE 6

Model	
PM: Bulkhead union	PE: Union tee
PLM: Bulkhead male elbow	PY: Union "Y"
PP: Plug	PV: Union elbow
PZ: Cross	PU: Straight union

Standard color	Specification
Blank: Gray	PM Release button: Gray
	Others Release button: Gray Body: Gray
D: Black	PM Release button: Black
	Others Release button: Black Body: Black

Port size

- 4: Φ4mm
- 6: Φ6mm
- 8: Φ8mm
- 10: Φ10mm
- 12: Φ12mm

Different diameter type fittings: PEG 6-4

Model	
PG: Different diameter straight	PEG: Different diameter tee
PZG: Different diameter cross	PEG: Different diameter tee
PKG: Reducer triple branch union	PEW: Different diameter tee
PHK: Universal reducer triple branch union	PYW: Different diameter union "Y"
PHD: Universal reducer four branch union	PGJ: Plug-in reducer

Standard color	Specification
Blank: Gray	Release button: Gray Body: Gray
	Release button: Black Body: Black

Port size II

- 4: Φ4mm
- 6: Φ6mm
- 8: Φ8mm
- 10: Φ10mm

Port size I

- 4: Φ4mm
- 6: Φ6mm
- 8: Φ8mm
- 10: Φ10mm
- 12: Φ12mm

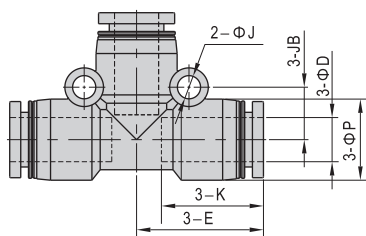
Inner structure

No.	Item	Material
1	Release button	POM
2	Guide	Aluminum alloy
3	Spring gasket	Stainless steel
4	Chuck	POM
5	O-ring	NBR
6	Body	PBT

One-touch fittings---tube-tube type

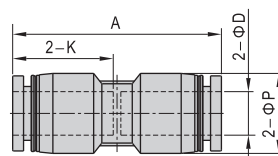
■ Dimensions

PE series



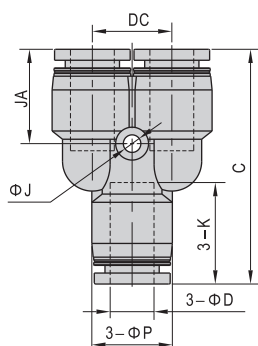
Model\Item	ΦD	ΦP	K	E	ΦJ	JB
PE4	4	9	14	17	3.2	6.5
PE6	6	12.5	16.5	20	3.2	8
PE8	8	15	18.5	23	4.3	9.5
PE10	10	18	21	26.5	4.3	11
PE12	12	21	23	30	4.3	13

PU series



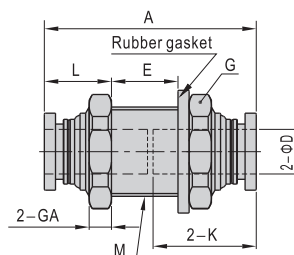
Model\Item	ΦD	ΦP	K	A
PU4	4	9	14	29.5
PU6	6	12.5	16.5	34
PU8	8	15	18.5	38.5
PU10	10	18	21	43
PU12	12	21	23	47

PY series



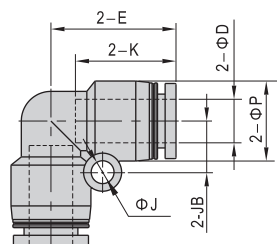
Model\Item	ΦD	ΦP	C	K	ΦJ	JA	DC
PY4	4	9	31.5	14	3.2	13	10
PY6	6	12.5	37	16.5	3.2	15.5	12
PY8	8	15	42.5	18.5	3.2	17	14.5
PY10	10	18	48.5	21	4.3	19.5	18
PY12	12	21	54.5	23	4.3	21	20.5

PM series



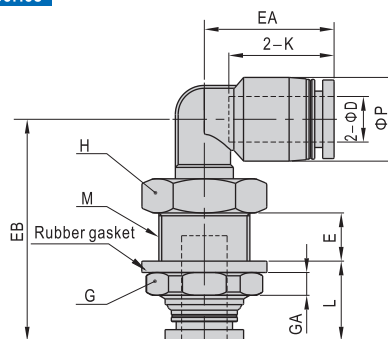
Model\Item	ΦD	M	A	K	L	E	G(Across flat)	GA
PM4	4	M12X1	29	14	10	7	14	4
PM6	6	M14X1	34	16.5	10.5	11	17	4
PM8	8	M16X1	38	18.5	11.5	13	19	4
PM10	10	M20X1	43	21	12.5	16	24	5
PM12	12	M22X1	46.5	23	13.5	17.5	27	6

PV series



Model\Item	ΦD	ΦP	K	E	ΦJ	JB
PV4	4	9	14	17	3.2	6.5
PV6	6	12.5	16.5	20	3.2	8
PV8	8	15	18.5	23	4.3	9.5
PV10	10	18	21	26.5	4.3	11
PV12	12	21	23	30	4.3	13

PLM series

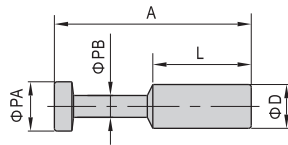


Model\Item	ΦD	ΦP	M	L	E	K	EA	EB	G(Across flat)	GA	H(Across flat)
PLM4	4	9	M12X1	12	7.5	14	17	31	14	4	14
PLM6	6	12.5	M14X1	12.5	8.5	17	20	35.5	17	4	17
PLM8	8	15	M16X1	13.5	9	18.5	23	39	19	4	19
PLM10	10	18	M20X1	14.5	11	21	25.5	44.5	24	5	22
PLM12	12	21	M22X1	15.5	11	23	29.5	48	27	6	24

Accessories—One-Touch Fittings

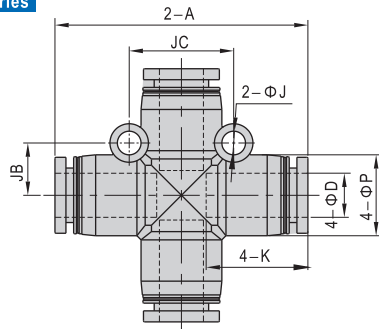
One-touch fittings---tube-tube type

PP series



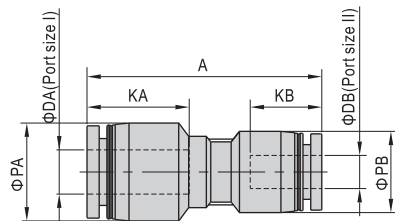
Model\Item	ΦD	ΦPA	ΦPB	L	A
PP4	4	5	3	15	27.5
PP6	6	7	3	17	32
PP8	8	9	4	18	36
PP10	10	11	5	20	42
PP12	12	13	6	23	44

PZ series



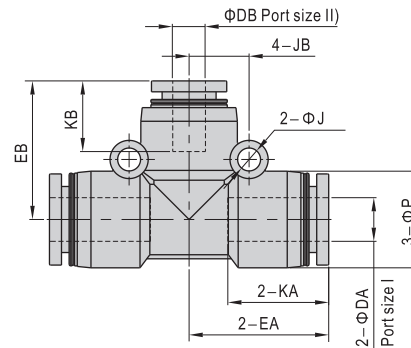
Model\Item	ΦD	A	ΦP	K	ΦJ	JB	JC
PZ4	4	34	9	14	3.2	6.5	13
PZ6	6	39.5	12.5	16.5	3.2	8	16
PZ8	8	46	15	18.5	4.3	9.5	19
PZ10	10	52.5	18	21	4.3	11	22
PZ12	12	59.5	21	23	4.3	13	26

PG series



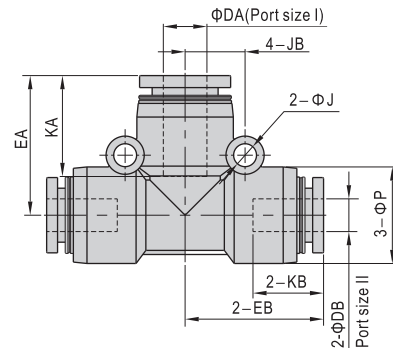
Model\Item	ΦDA	ΦDB	ΦPA	ΦPB	KA	KB	A
PG6-4	6	4	12.5	9	16.5	14	33.5
PG8-4	8	4	15	12.5	18.5	14	37.5
PG8-6	8	6	15	12.5	18.5	16.5	38
PG10-6	10	6	18	15	21	16.5	42
PG10-8	10	8	18	15	21	18.5	42.5
PG12-8	12	8	21	18	23	18.5	46.5
PG12-10	12	10	21	18	23	21	47

PEG series



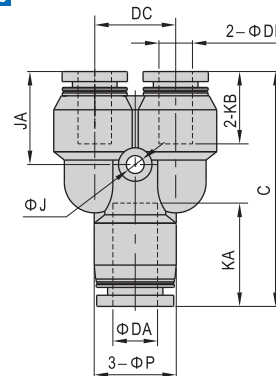
Model\Item	ΦDA	ΦDB	ΦP	KA	KB	EA	EB	ΦJ	JB
PEG6-4	6	4	12.5	16.5	14	20.0	19.5	3.2	8
PEG8-6	8	6	15	18.5	16.5	22.5	22	4.3	9.5
PEG10-8	10	8	18	21	18.5	25.5	25.5	4.3	11
PEG12-8	12	8	21	23	18.5	29	28.5	4.3	13
PEG12-10	12	10	21	23	21	29	29	4.3	13

PEW series



Model\Item	ΦDA	ΦDB	ΦP	KA	KB	EA	EB	ΦJ	JB
PEW6-4	6	4	12.5	16.5	14	20	19.5	3.2	8
PEW8-6	8	6	15	18.5	16.5	22.5	22	4.3	9.5
PEW10-8	10	8	18	21	18.5	25.5	25.5	4.3	11
PEW12-8	12	8	21	23	18.5	29	28.5	4.3	13
PEW12-10	12	10	21	23	21	29	29	4.3	13

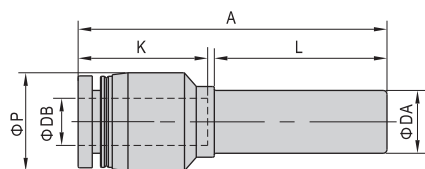
PYW series



Model\Item	ΦDA	ΦDB	C	ΦP	KA	KB	ΦJ	JA	DC
PYW6-4	6	4	36.5	12.5	16.5	14	3.2	15	12
PYW8-6	8	6	42	15	18.5	16.5	3.2	16.5	14.5
PYW10-8	10	8	48.5	18	21	18.5	4.3	19	18
PYW12-8	12	8	54	21	23	18.5	4.3	20.5	20.5
PYW12-10	12	10	54.5	21	23	21	4.3	21	20.5

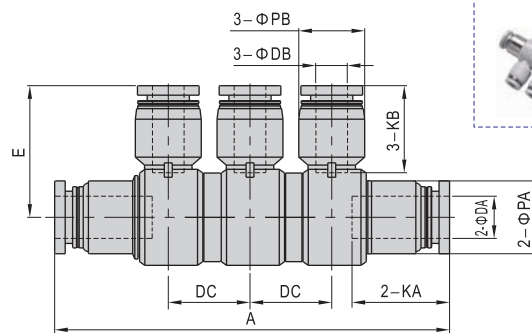
One-touch fittings---tube-tube type

PGJ series



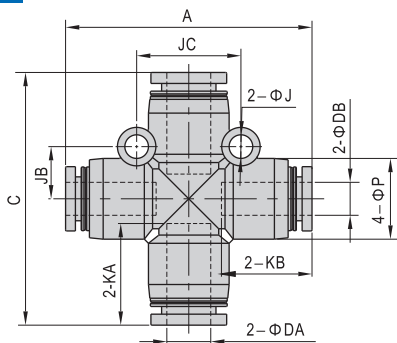
Model\Item	Φ DA	Φ DB	Φ P	K	L	A
PGJ6-4	6	4	9	14	21	35
PGJ8-4	8	4	12.5	14	22	39
PGJ8-6	8	6	12.5	16.5	22	39.5
PGJ10-6	10	6	15	16.5	25	44
PGJ10-8	10	8	15	18.5	25	44.5
PGJ12-8	12	8	18	18.5	26	48.5
PGJ12-10	12	10	18	21	26	49

PHK series



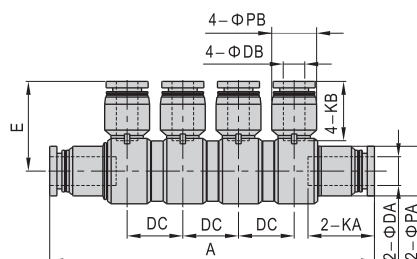
Model\Item	Φ DA	Φ DB	A	Φ PA	Φ PB	KA	KB	DC	E
PHK8-6	8	6	75	14	12.5	18.5	16.5	15.5	25
PHK10-8	10	8	85.5	17	15	21	18.5	16.5	29.5

PZG series



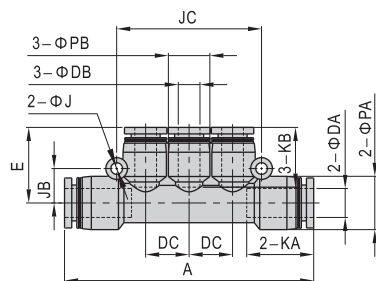
Model\Item	Φ DA	Φ DB	A	C	Φ P	KA	KB	Φ J	JB	JC
PZG6-4	6	4	39	39.5	12.5	16.5	14	3.2	8	16
PZG8-6	8	6	45	46	15	18.5	16.5	4.3	9.5	19
PZG10-8	10	8	52	52.5	18	21	18.5	4.3	11	22
PZG12-10	12	10	59	59.5	21	23	21	4.3	13	26

PHD series



Model\Item	Φ DA	Φ DB	A	Φ PA	Φ PB	KA	KB	DC	E
PHD8-6	8	6	90.5	14	12.5	18.5	16.5	15.5	25
PHD10-8	10	8	102.5	17	15	21	18.5	16.5	29.5

PKG series



Model\Item	Φ DA	Φ DB	A	Φ PA	Φ PB	KA	KB	Φ J	JB	JC	DC	E
PKG6-4	6	4	58.5	12.5	9	16.5	14	3.2	8	34	10	17.5
PKG8-6	8	6	69	15	12.5	18.5	16.5	3.2	9.5	40	12	21
PKG10-8	10	8	80	18	15	21	18.5	4.3	11	48	14.5	24



Back
Tube
fittings