

# Accessories—One-Touch Fittings

## One-touch fittings—tube-tube type



### Ordering code

Same diameter type fittings

**NPE 1/4**

①

②

#### ① Model

NPM: Bulkhead union



NPE: Union tee



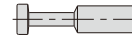
NPU: Straight union



NPY: Union "Y"



NPP: Plug



#### ② Port size

5/32:  $\Phi$  5/32"  
 1/4:  $\Phi$  1/4"  
 5/16:  $\Phi$  5/16"  
 3/8:  $\Phi$  3/8"  
 1/2:  $\Phi$  1/2"

Different diameter type fittings

**NPEG 1/4 - 5/32**

①

②

③

#### ① Model

NPG: Different diameter straight



NPYW: Different diameter union "Y"



#### ② Port size

1/4:  $\Phi$  1/4"  
 5/16:  $\Phi$  5/16"  
 3/8:  $\Phi$  3/8"  
 1/2:  $\Phi$  1/2"

#### ③ Port size

5/32:  $\Phi$  5/32"  
 1/4:  $\Phi$  1/4"  
 5/16:  $\Phi$  5/16"  
 3/8:  $\Phi$  3/8"

### Table for interface port and tube O.D.

Product series	Port size I	Port size II			
		$\Phi$ 5/32"	$\Phi$ 1/4"	$\Phi$ 5/16"	$\Phi$ 3/8"
NPG	$\Phi$ 1/4"	●			
	$\Phi$ 5/16"		●		
	$\Phi$ 3/8"		●	●	
	$\Phi$ 1/2"			●	●
NPYW	$\Phi$ 1/4"	●			
	$\Phi$ 5/16"		●		
	$\Phi$ 3/8"			●	
	$\Phi$ 1/2"			●	●

Product series	Port size				
	$\Phi$ 5/32"	$\Phi$ 1/4"	$\Phi$ 5/16"	$\Phi$ 3/8"	$\Phi$ 1/2"
NPE、NPY NPU、NPM、NPP	●	●	●	●	●

### Product feature

1. Variable models can be widely used in every kind of pneumatic systems.
2. High circulation performance: bear the same flow with the volume of the tubing inside diameter.
3. Connect tubing easily and conveniently.  
The tubing connection portion is safe and durable.

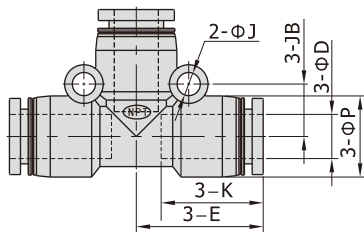
### Specification

Operating pressure range	0~145psi(0~1.0MPa)
Negative pressure	10Torr(-750mmHg)
Proof pressure	215psi(1.5MPa)
Ambient and fluid temperature	-5~160°F(-20~70°C)
Applicable tubing	Soft nylon or polyurethane
Color	Release button: Blue/Body: Black

## One-touch fittings—tube-tube type

### Dimensions

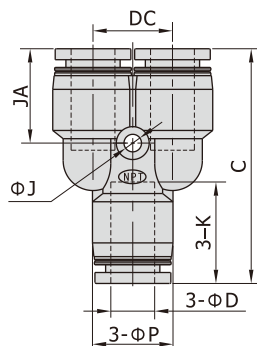
#### NPE Series



[Unit: inch]

Model\Item	ΦD	ΦP	K	E	ΦJ	JB
NPE5/32	5/32	0.35	0.53	0.63	0.13	0.26
NPE1/4	1/4	0.49	0.65	0.79	0.13	0.31
NPE5/16	5/16	0.59	0.73	0.91	0.17	0.37
NPE3/8	3/8	0.71	0.83	1.04	0.17	0.43
NPE1/2	1/2	0.83	0.91	1.18	0.17	0.51

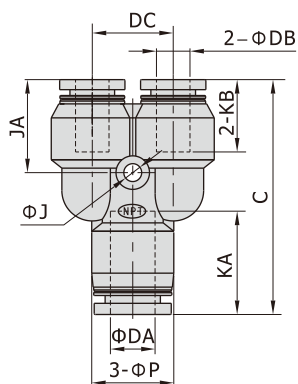
#### NPY Series



[Unit: inch]

Model\Item	ΦD	ΦP	C	K	ΦJ	JA	DC
NPY5/32	5/32	0.35	1.16	0.53	0.13	0.47	0.39
NPY1/4	1/4	0.49	1.46	0.65	0.13	0.61	0.47
NPY5/16	5/16	0.59	1.67	0.73	0.13	0.67	0.57
NPY3/8	3/8	0.71	1.91	0.83	0.17	0.77	0.71
NPY1/2	1/2	0.83	2.15	0.91	0.17	0.83	0.81

#### NPYW Series



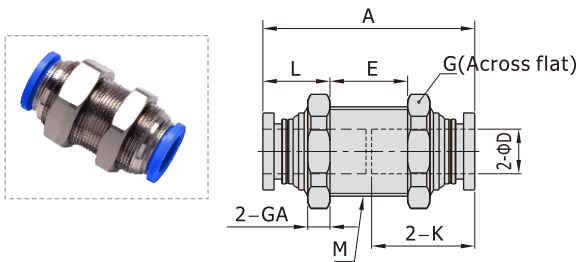
[Unit: inch]

Model\Item	ΦDA	ΦDB	C	ΦP	KA	KB	ΦJ	JA	DC
NPYW1/4-5/32	1/4	5/32	1.40	0.49	0.65	0.53	0.13	0.55	0.47
NPYW5/16-1/4	5/16	1/4	1.65	0.59	0.73	0.65	0.13	0.65	0.57
NPYW3/8-5/16	3/8	5/16	1.91	0.71	0.83	0.73	0.17	0.75	0.71
NPYW1/2-5/16	1/2	5/16	2.13	0.83	0.91	0.73	0.17	0.81	0.81
NPYW1/2-3/8	1/2	3/8	2.15	0.83	0.91	0.83	0.17	0.83	0.81

# Accessories—One-Touch Fittings

## One-touch fittings—tube-tube type

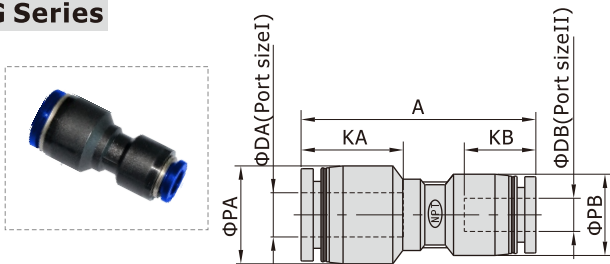
### NPM Series



[Unit: inch]

Model\Item	ΦD	M	A	K	L	E	G	GA
NPM5/32	5/32	1/2-20 UNF	1.08	0.53	0.37	0.28	9/16	0.22
NPM1/4	1/4	9/16-18 UNF	1.34	0.65	0.41	0.43	11/16	0.22
NPM5/16	5/16	5/8-18 UNF	1.50	0.73	0.49	0.43	3/4	0.22
NPM3/8	3/8	7/8-14 UNF	1.69	0.83	0.49	0.63	1	0.28
NPM1/2	1/2	7/8-14 UNF	1.83	0.91	0.53	0.69	1	0.28

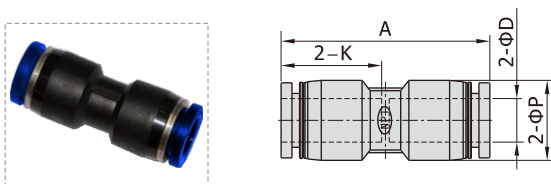
### NPG Series



[Unit: inch]

Model\Item	ΦDA	ΦDB	ΦPA	ΦPB	KA	KB	A
NPG1/4-5/32	1/4	5/32	0.49	0.35	0.65	0.53	1.30
NPG5/16-1/4	5/16	1/4	0.59	0.49	0.73	0.65	1.50
NPG3/8-1/4	3/8	1/4	0.71	0.59	0.83	0.65	1.65
NPG3/8-5/16	3/8	5/16	0.71	0.59	0.83	0.73	1.67
NPG1/2-5/16	1/2	5/16	0.83	0.71	0.91	0.73	1.83
NPG1/2-3/8	1/2	3/8	0.83	0.71	0.91	0.83	1.85

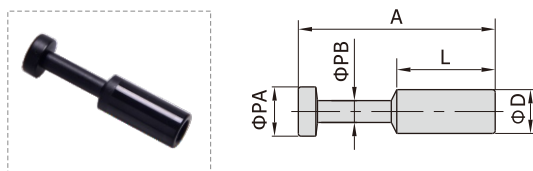
### NPU Series



[Unit: inch]

Model\Item	ΦD	ΦP	K	A
NPU5/32	5/32	0.35	0.53	1.08
NPU1/4	1/4	0.49	0.65	1.34
NPU5/16	5/16	0.59	0.73	1.52
NPU3/8	3/8	0.71	0.83	1.69
NPU1/2	1/2	0.83	0.91	1.85

### NPP Series



[Unit: inch]

Model\Item	ΦD	ΦPA	ΦPB	L	A
NPP5/32	5/32	0.20	0.12	0.59	1.08
NPP1/4	1/4	0.28	0.12	0.67	1.26
NPP5/16	5/16	0.35	0.16	0.71	1.42
NPP3/8	3/8	0.35	0.16	0.79	1.50
NPP1/2	1/2	0.51	0.24	0.91	1.73