

Accessories—One-Touch Fittings

One-touch fittings—tube-tube type



Ordering code

Same diameter type fittings

NPE 1/4

① ②

① Model

NPM: Bulkhead union



NPE: Union tee



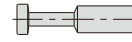
NPU: Straight union



NPY: Union "Y"



NPP: Plug



② Port size

5/32: Φ 5/32"
 1/4: Φ 1/4"
 5/16: Φ 5/16"
 3/8: Φ 3/8"
 1/2: Φ 1/2"

Different diameter type fittings

NPEG 1/4 - 5/32

① ② ③

① Model

NPG: Different diameter straight



NPYW: Different diameter union "Y"



② Port size

1/4: Φ 1/4"
 5/16: Φ 5/16"
 3/8: Φ 3/8"
 1/2: Φ 1/2"

③ Port size

5/32: Φ 5/32"
 1/4: Φ 1/4"
 5/16: Φ 5/16"
 3/8: Φ 3/8"

Product feature

1. Variable models can be widely used in every kind of pneumatic systems.
2. High circulation performance: bear the same flow with the volume of the tubing inside diameter.
3. Connect tubing easily and conveniently.
The tubing connection portion is safe and durable.

Table for interface port and tube O.D.

Product series	Port size I	Port size II			
		Φ 5/32"	Φ 1/4"	Φ 5/16"	Φ 3/8"
NPG	Φ 1/4"	●			
	Φ 5/16"		●		
	Φ 3/8"		●	●	
	Φ 1/2"			●	●
NPYW	Φ 1/4"	●			
	Φ 5/16"		●		
	Φ 3/8"			●	
	Φ 1/2"			●	●

Product series	Port size				
	Φ 5/32"	Φ 1/4"	Φ 5/16"	Φ 3/8"	Φ 1/2"
NPE、NPY NPU、NPM、NPP	●	●	●	●	●

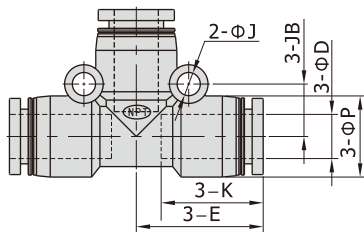
Specification

Operating pressure range	0~145psi(0~1.0MPa)
Negative pressure	10Torr(-750mmHg)
Proof pressure	215psi(1.5MPa)
Ambient and fluid temperature	-5~160°F(-20~70°C)
Applicable tubing	Soft nylon or polyurethane
Color	Release button: Blue/Body: Black

One-touch fittings—tube-tube type

Dimensions

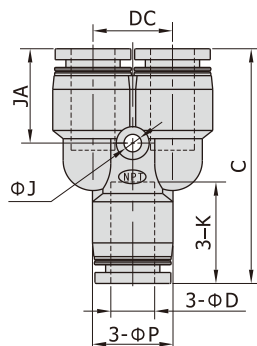
NPE Series



[Unit: inch]

Model\Item	ΦD	ΦP	K	E	ΦJ	JB
NPE5/32	5/32	0.35	0.53	0.63	0.13	0.26
NPE1/4	1/4	0.49	0.65	0.79	0.13	0.31
NPE5/16	5/16	0.59	0.73	0.91	0.17	0.37
NPE3/8	3/8	0.71	0.83	1.04	0.17	0.43
NPE1/2	1/2	0.83	0.91	1.18	0.17	0.51

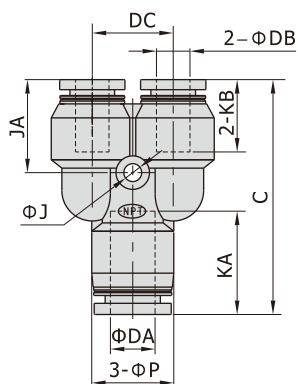
NPY Series



[Unit: inch]

Model\Item	ΦD	ΦP	C	K	ΦJ	JA	DC
NPY5/32	5/32	0.35	1.16	0.53	0.13	0.47	0.39
NPY1/4	1/4	0.49	1.46	0.65	0.13	0.61	0.47
NPY5/16	5/16	0.59	1.67	0.73	0.13	0.67	0.57
NPY3/8	3/8	0.71	1.91	0.83	0.17	0.77	0.71
NPY1/2	1/2	0.83	2.15	0.91	0.17	0.83	0.81

NPYW Series



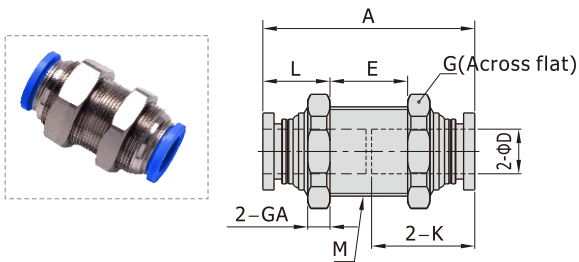
[Unit: inch]

Model\Item	ΦDA	ΦDB	C	ΦP	KA	KB	ΦJ	JA	DC
NPYW1/4-5/32	1/4	5/32	1.40	0.49	0.65	0.53	0.13	0.55	0.47
NPYW5/16-1/4	5/16	1/4	1.65	0.59	0.73	0.65	0.13	0.65	0.57
NPYW3/8-5/16	3/8	5/16	1.91	0.71	0.83	0.73	0.17	0.75	0.71
NPYW1/2-5/16	1/2	5/16	2.13	0.83	0.91	0.73	0.17	0.81	0.81
NPYW1/2-3/8	1/2	3/8	2.15	0.83	0.91	0.83	0.17	0.83	0.81

Accessories—One-Touch Fittings

One-touch fittings—tube-tube type

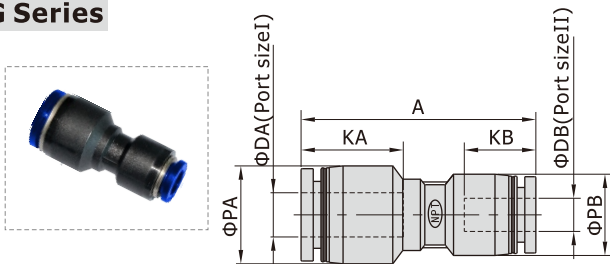
NPM Series



[Unit: inch]

Model\Item	ΦD	M	A	K	L	E	G	GA
NPM5/32	5/32	1/2-20 UNF	1.08	0.53	0.37	0.28	9/16	0.22
NPM1/4	1/4	9/16-18 UNF	1.34	0.65	0.41	0.43	11/16	0.22
NPM5/16	5/16	5/8-18 UNF	1.50	0.73	0.49	0.43	3/4	0.22
NPM3/8	3/8	7/8-14 UNF	1.69	0.83	0.49	0.63	1	0.28
NPM1/2	1/2	7/8-14 UNF	1.83	0.91	0.53	0.69	1	0.28

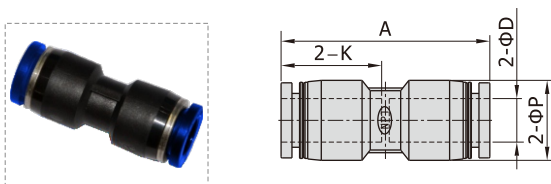
NPG Series



[Unit: inch]

Model\Item	ΦDA	ΦDB	ΦPA	ΦPB	KA	KB	A
NPG1/4-5/32	1/4	5/32	0.49	0.35	0.65	0.53	1.30
NPG5/16-1/4	5/16	1/4	0.59	0.49	0.73	0.65	1.50
NPG3/8-1/4	3/8	1/4	0.71	0.59	0.83	0.65	1.65
NPG3/8-5/16	3/8	5/16	0.71	0.59	0.83	0.73	1.67
NPG1/2-5/16	1/2	5/16	0.83	0.71	0.91	0.73	1.83
NPG1/2-3/8	1/2	3/8	0.83	0.71	0.91	0.83	1.85

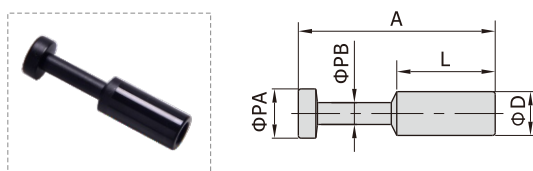
NPU Series



[Unit: inch]

Model\Item	ΦD	ΦP	K	A
NPU5/32	5/32	0.35	0.53	1.08
NPU1/4	1/4	0.49	0.65	1.34
NPU5/16	5/16	0.59	0.73	1.52
NPU3/8	3/8	0.71	0.83	1.69
NPU1/2	1/2	0.83	0.91	1.85

NPP Series



[Unit: inch]

Model\Item	ΦD	ΦPA	ΦPB	L	A
NPP5/32	5/32	0.20	0.12	0.59	1.08
NPP1/4	1/4	0.28	0.12	0.67	1.26
NPP5/16	5/16	0.35	0.16	0.71	1.42
NPP3/8	3/8	0.35	0.16	0.79	1.50
NPP1/2	1/2	0.51	0.24	0.91	1.73