

Accessories—One-Touch Fittings

One-touch fittings—tube-tube type



Ordering code

Same diameter type fittings

NPE 1/4

①

②

① Model

NPM: Bulkhead union



NPE: Union tee



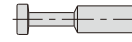
NPU: Straight union



NPY: Union "Y"



NPP: Plug



② Port size

5/32: Φ 5/32"
 1/4: Φ 1/4"
 5/16: Φ 5/16"
 3/8: Φ 3/8"
 1/2: Φ 1/2"

Different diameter type fittings

NPEG 1/4 - 5/32

①

②

③

① Model

NPG: Different diameter straight



NPYW: Different diameter union "Y"



② Port size

1/4: Φ 1/4"
 5/16: Φ 5/16"
 3/8: Φ 3/8"
 1/2: Φ 1/2"

③ Port size

5/32: Φ 5/32"
 1/4: Φ 1/4"
 5/16: Φ 5/16"
 3/8: Φ 3/8"

Table for interface port and tube O.D.

| Product series | Port size I | Port size II | | | |
|----------------|--------------|--------------|-------------|--------------|-------------|
| | | Φ 5/32" | Φ 1/4" | Φ 5/16" | Φ 3/8" |
| NPG | Φ 1/4" | ● | | | |
| | Φ 5/16" | | ● | | |
| | Φ 3/8" | | ● | ● | |
| | Φ 1/2" | | | ● | ● |
| NPYW | Φ 1/4" | ● | | | |
| | Φ 5/16" | | ● | | |
| | Φ 3/8" | | | ● | |
| | Φ 1/2" | | | ● | ● |

| Product series | Port size | | | | |
|------------------------|--------------|-------------|--------------|-------------|-------------|
| | Φ 5/32" | Φ 1/4" | Φ 5/16" | Φ 3/8" | Φ 1/2" |
| NPE、NPY NPU、NPM、NPP | ● | ● | ● | ● | ● |

Product feature

1. Variable models can be widely used in every kind of pneumatic systems.
2. High circulation performance: bear the same flow with the volume of the tubing inside diameter.
3. Connect tubing easily and conveniently.
The tubing connection portion is safe and durable.

Specification

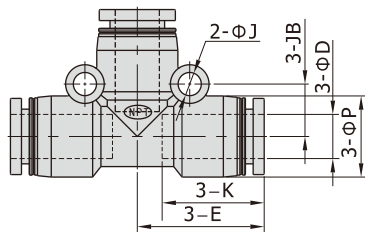
| | |
|-------------------------------|----------------------------------|
| Operating pressure range | 0~145psi(0~1.0MPa) |
| Negative pressure | 10Torr(-750mmHg) |
| Proof pressure | 215psi(1.5MPa) |
| Ambient and fluid temperature | -5~160°F(-20~70°C) |
| Applicable tubing | Soft nylon or polyurethane |
| Color | Release button: Blue/Body: Black |

Accessories—One-Touch Fittings

One-touch fittings—tube-tube type

Dimensions

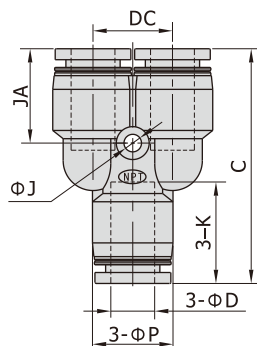
NPE Series



[Unit: inch]

| Model\Item | ΦD | ΦP | K | E | ΦJ | JB |
|------------|------|------|------|------|------|------|
| NPE5/32 | 5/32 | 0.35 | 0.53 | 0.63 | 0.13 | 0.26 |
| NPE1/4 | 1/4 | 0.49 | 0.65 | 0.79 | 0.13 | 0.31 |
| NPE5/16 | 5/16 | 0.59 | 0.73 | 0.91 | 0.17 | 0.37 |
| NPE3/8 | 3/8 | 0.71 | 0.83 | 1.04 | 0.17 | 0.43 |
| NPE1/2 | 1/2 | 0.83 | 0.91 | 1.18 | 0.17 | 0.51 |

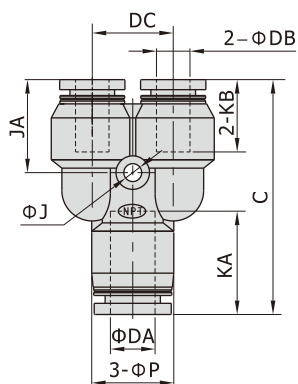
NPY Series



[Unit: inch]

| Model\Item | ΦD | ΦP | C | K | ΦJ | JA | DC |
|------------|------|------|------|------|------|------|------|
| NPY5/32 | 5/32 | 0.35 | 1.16 | 0.53 | 0.13 | 0.47 | 0.39 |
| NPY1/4 | 1/4 | 0.49 | 1.46 | 0.65 | 0.13 | 0.61 | 0.47 |
| NPY5/16 | 5/16 | 0.59 | 1.67 | 0.73 | 0.13 | 0.67 | 0.57 |
| NPY3/8 | 3/8 | 0.71 | 1.91 | 0.83 | 0.17 | 0.77 | 0.71 |
| NPY1/2 | 1/2 | 0.83 | 2.15 | 0.91 | 0.17 | 0.83 | 0.81 |

NPYW Series



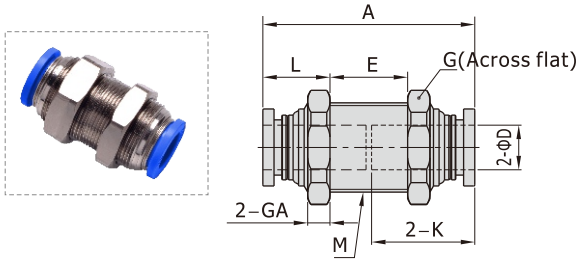
[Unit: inch]

| Model\Item | ΦDA | ΦDB | C | ΦP | KA | KB | ΦJ | JA | DC |
|--------------|------|------|------|------|------|------|------|------|------|
| NPYW1/4-5/32 | 1/4 | 5/32 | 1.40 | 0.49 | 0.65 | 0.53 | 0.13 | 0.55 | 0.47 |
| NPYW5/16-1/4 | 5/16 | 1/4 | 1.65 | 0.59 | 0.73 | 0.65 | 0.13 | 0.65 | 0.57 |
| NPYW3/8-5/16 | 3/8 | 5/16 | 1.91 | 0.71 | 0.83 | 0.73 | 0.17 | 0.75 | 0.71 |
| NPYW1/2-5/16 | 1/2 | 5/16 | 2.13 | 0.83 | 0.91 | 0.73 | 0.17 | 0.81 | 0.81 |
| NPYW1/2-3/8 | 1/2 | 3/8 | 2.15 | 0.83 | 0.91 | 0.83 | 0.17 | 0.83 | 0.81 |

Accessories—One-Touch Fittings

One-touch fittings—tube-tube type

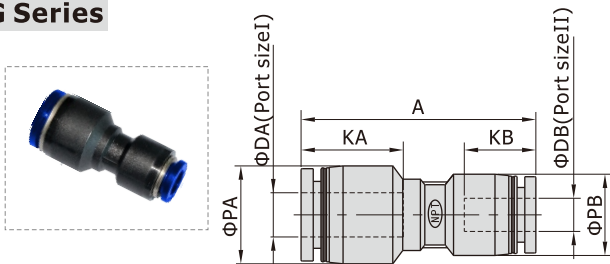
NPM Series



[Unit: inch]

| Model\Item | ΦD | M | A | K | L | E | G | GA |
|------------|------|-------------|------|------|------|------|-------|------|
| NPM5/32 | 5/32 | 1/2-20 UNF | 1.08 | 0.53 | 0.37 | 0.28 | 9/16 | 0.22 |
| NPM1/4 | 1/4 | 9/16-18 UNF | 1.34 | 0.65 | 0.41 | 0.43 | 11/16 | 0.22 |
| NPM5/16 | 5/16 | 5/8-18 UNF | 1.50 | 0.73 | 0.49 | 0.43 | 3/4 | 0.22 |
| NPM3/8 | 3/8 | 7/8-14 UNF | 1.69 | 0.83 | 0.49 | 0.63 | 1 | 0.28 |
| NPM1/2 | 1/2 | 7/8-14 UNF | 1.83 | 0.91 | 0.53 | 0.69 | 1 | 0.28 |

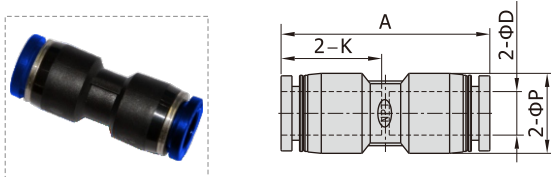
NPG Series



[Unit: inch]

| Model\Item | ΦDA | ΦDB | ΦPA | ΦPB | KA | KB | A |
|-------------|------|------|------|------|------|------|------|
| NPG1/4-5/32 | 1/4 | 5/32 | 0.49 | 0.35 | 0.65 | 0.53 | 1.30 |
| NPG5/16-1/4 | 5/16 | 1/4 | 0.59 | 0.49 | 0.73 | 0.65 | 1.50 |
| NPG3/8-1/4 | 3/8 | 1/4 | 0.71 | 0.59 | 0.83 | 0.65 | 1.65 |
| NPG3/8-5/16 | 3/8 | 5/16 | 0.71 | 0.59 | 0.83 | 0.73 | 1.67 |
| NPG1/2-5/16 | 1/2 | 5/16 | 0.83 | 0.71 | 0.91 | 0.73 | 1.83 |
| NPG1/2-3/8 | 1/2 | 3/8 | 0.83 | 0.71 | 0.91 | 0.83 | 1.85 |

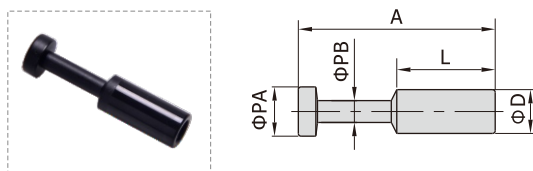
NPU Series



[Unit: inch]

| Model\Item | ΦD | ΦP | K | A |
|------------|------|------|------|------|
| NPU5/32 | 5/32 | 0.35 | 0.53 | 1.08 |
| NPU1/4 | 1/4 | 0.49 | 0.65 | 1.34 |
| NPU5/16 | 5/16 | 0.59 | 0.73 | 1.52 |
| NPU3/8 | 3/8 | 0.71 | 0.83 | 1.69 |
| NPU1/2 | 1/2 | 0.83 | 0.91 | 1.85 |

NPP Series



[Unit: inch]

| Model\Item | ΦD | ΦPA | ΦPB | L | A |
|------------|------|------|------|------|------|
| NPP5/32 | 5/32 | 0.20 | 0.12 | 0.59 | 1.08 |
| NPP1/4 | 1/4 | 0.28 | 0.12 | 0.67 | 1.26 |
| NPP5/16 | 5/16 | 0.35 | 0.16 | 0.71 | 1.42 |
| NPP3/8 | 3/8 | 0.35 | 0.16 | 0.79 | 1.50 |
| NPP1/2 | 1/2 | 0.51 | 0.24 | 0.91 | 1.73 |