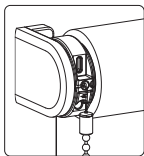
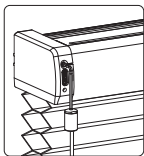


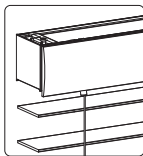
Start Guide



Roller



Honeycomb



Venetian



powered by eve.
Motionblinds



matter



**BUILT ON
THREAD**

**REQUIRES
BORDER
ROUTER**



Motionblinds



Check the requirements

Eve Motionblinds motors support Matter and Thread, making them work with all major platforms.

To setup and control Eve Motionblinds, you need a border router with Thread and Matter from the platform you choose and your devices must meet specific requirements.

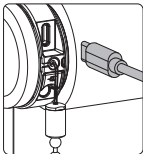


More
information

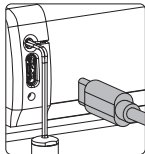
1

Activate the motor

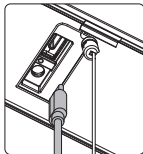
To activate the motor, plug in a standard USB-C 5V power supply via a USB-C cable. For example, your smartphone charger.



Roller



Honeycomb

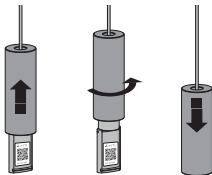


Venetian

2

Add Eve Motionblinds to your platform

Scan the Matter Setup Code through the app from the smart home platform of your choice to add Eve Motionblinds to the platform.

**3**

Program end positions

Give a short pull to check if the blind automatically moves to its end positions. If not, no end positions have been programmed. To program end positions, scan the QR code below to select your product and follow the instructions in the manual.

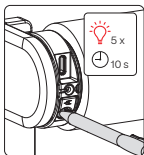


More
information

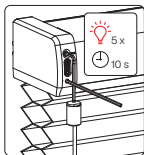


Reset the connection

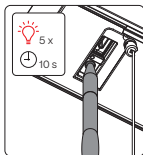
Make sure to remove the USB-C cable from the motor. Hold the program button for 10 seconds to delete the connection between the blind and your smart home platform. The LED lights up 5 times and the blind steps up and down 1 time to indicate that the connection is reset. Now the blind can be reconnected.



Roller



Honeycomb



Venetian