

DTG/WATER BASED INFRARED DRYERS

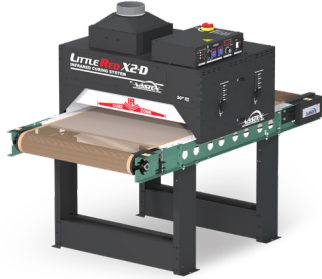
LITTLERED X-D SERIES

Advanced technology speeds curing of ink jet, water-based and discharge inks.

**15 YEAR
HEATER WARRANTY**



LR-X1D-30



LR-X2D-30



LR-X1D-54



LR-X3D-78

LittleRed Digital series dryers have a dual zone heat control, with a boost zone to quickly reach cure temperature. This makes it GREAT Inkjet curing! With a second X3 chamber, the LR-X3D-30-2 and LR-X3D-54-2 can handle higher production including longer times necessary for Kornit printers.

CE CERTIFIED
BY CERTIFICATION EXPERTS
THE NETHERLANDS

	18" Belt LR-X1D-18	30" Belt LR-X1D-30	30" Belt LR-X2D-30	30" Belt LR-X3D-30	54" Belt LR-X1D-54	54" Belt LR-X3D-54	78" Belt LR-X3D-78
Total Wattage	2,280w	4,050w	6,300w	8,900w	8,100w	17,800w	26,700w
Belt Width	18" (46 cm)	30" (76 cm)	30" (76 cm)	30" (76 cm)	54" (137 cm)	54" (137 cm)	78" (198 cm)
Heater Width	18" (46 cm)	24" (61 cm)	24" (61 cm)	24" (61 cm)	48" (122 cm)	48" (122 cm)	72" (183 cm)
Conveyor Length	48" (122 cm)	48" (122 cm)	66" (168 cm)	88" (224 cm)	66" (168 cm)	88" (224 cm)	102" (260 cm)
Chamber Length	18" (46 cm)	18" (46 cm)	27" (69 cm)	41" (104 cm)	18" (46 cm)	41" (104 cm)	41" (104 cm)
Powered Exhaust	177 CFM (5 CMM)	280 CFM (7.9 CMM)	280 CFM (7.9 CMM)	388 CFM (11 CMM)	280 CFM (7.9 CMM)	650 CFM (15.6 CMM)	650 CFM (15.6 CMM)
Cure Times*							
Plastisol @ 25 secs	162+/hr	162+/hr	240+/hr	360+/hr	324+/hr	720+/hr	1,080+/hr
Waterbased/ Discharge @ 50 secs	81+/hr	81+/hr	122+/hr	185+/hr	162+/hr	370+/hr	555+/hr
Digital White Ink*							
@ 2 min.	34/hr	34/hr	51/hr	77/hr	38/hr	154/hr	231/hr
@ 3 min.	23/hr	23/hr	34/hr	51/hr	46/hr	103/hr	155/hr

Features

- HEAVY DUTY** "X-Series" Conveyor Belt Roller Tracking System with Teflon coated fiberglass belt and HD belt motor
- ACCURATE ADJUSTABLE** Dual digital PID Temperature controller is accurate to +/-1°F 2" - 7" (5 - 17.7 cm) belt-to-heater clearance, adjustable separately on each side for each heater
- EXHAUST CONSISTENT EXPANDABLE** High powered exhaust to remove fumes and moisture
Precision DC belt speed control w/ digital display
Add additional heat chambers and conveyor extensions

Options

- Additional chambers can be added as well as belt extensions
- Locking casters for easy mobility
- Creeper gear
- Donut Probe
- UL and ULc Certified

* Production speeds are estimates are based on 16" centers and will vary depending on ink manufacturer, humidity of shop, and other variables.



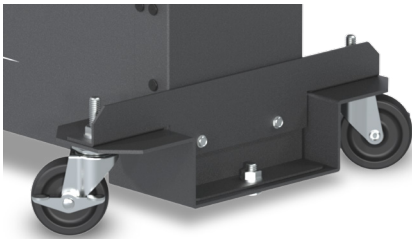
INFRARED DRYER ACCESSORIES



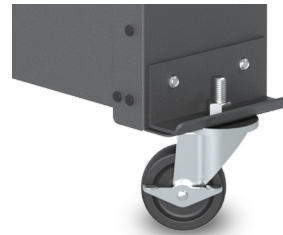
SI-27
Stand for D-100



**SI-27 W/
SI-27-DEMT**
Stand for D-1000

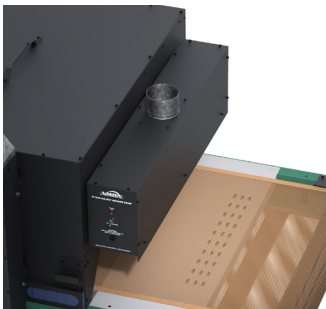


WS-EDD
Drop Down Wheel Set for
DB, LR & EC-I Dryers



WS-EC
Standard Wheel Set for
all non-tabletop Dryers

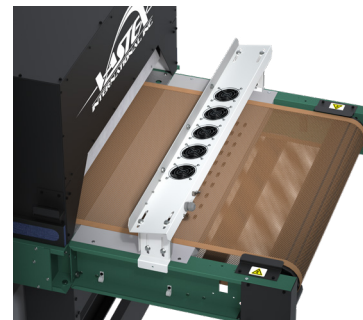
WS-EHD
Drop Down Wheel Set for
EC-II, ER & BR Dryers



EXHAUST HOOD

FEATURES

- Removes fumes at exit the dryer
- EXH-30 fits 30" (76cm) wide belts
- EXH-54 fits 54" (137cm) wide belts
- Available in 120v or 240v



CONVEYOR AIR BAR

FEATURES

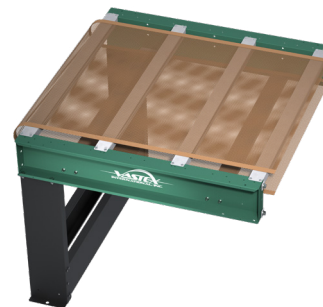
- Cools ink as garments exit the dryer
- CAB-30 fits 30" (76cm) wide belts
- CAB-54 fits 54" (137cm) wide belts
- Work on many non-Vastex dryers
- Available in 120v or 240v



HAT SUPPORT RAIL

FEATURES

- Angles hats so front is parallel with heaters
- HR-1 fits EconoRed II dryers
- HR-2 fits EconoRed III & BigRed Dryers



CONVEYOR EXTENSIONS

Extend your conveyor in
18" (46cm), 36" (92cm) and
54" (137cm) increments

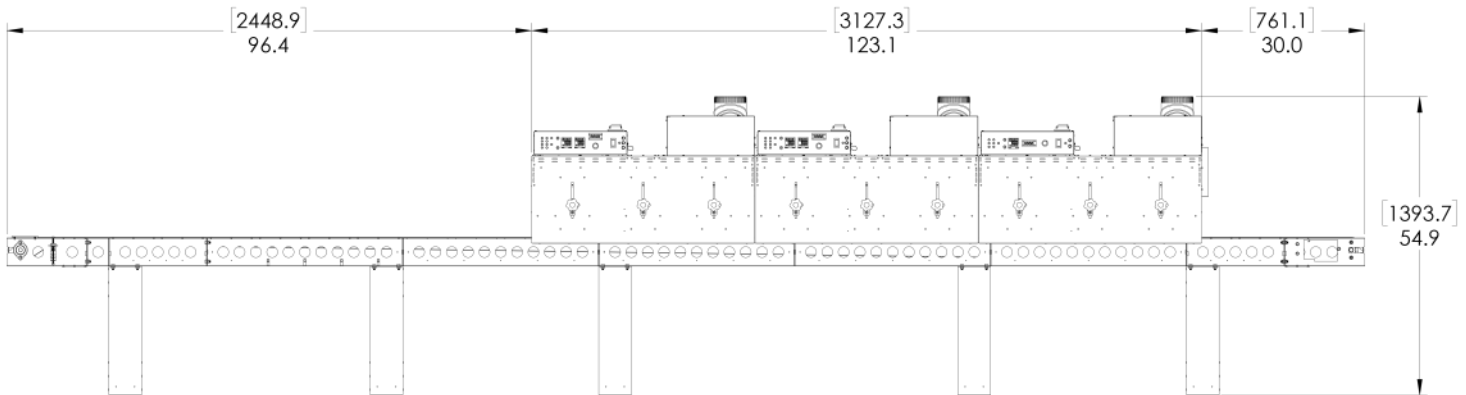


LittleRed XD Series

Technical Specifications



	LR-X1D-18	LR-X1D-30	LR-X1D-54	LR-X2D-30	LR-X3D-30	LR-X3D-30-2	LR-X3D-54	LR-X3D-54-2	LR-X3D-78
Heater Warranty	15 Year	15 Year	15 Year	15 Year	15 Year	15 Year	15 Year	15 Year	15 Year
Defect Warranty	3 Year	3 Year	3 Year	3 Year	3 Year	3 Year	3 Year	3 Year	3 Year
Shirts/hr Plastisol @ 25 secs	162+	162+	324+	240+	360+	720+	720+	1,440+	1,080+
Shirts/hr wb/discharge @50 secs	81+	81+	162+	122+	185+	370+	370+	720+	555+
Shirts/hr DTG/digital	34 @ 2 min. 27 @ 2.5 min. 23 @ 3 min.	34 @ 2 min. 27 @ 2.5 min. 23 @ 3 min.	68 @ 2 min. 54 @ 2.5 min. 46 @ 3 min.	51 @ 2 min. 40 @ 2.5 min. 34 @ 3 min.	77 @ 2 min. 61 @ 2.5 min. 51 @ 3 min.	144 @ 2 min. 122 @ 2.5 min. 102 @ 3 min. 51 @ 6 min.	154 @ 2 min. 123 @ 2.5 min. 103 @ 3 min.	308 @ 2 min. 226 @ 2.5 min. 206 @ 3 min. 102 @ 6 min.	231 @ 2 min. 185 @ 2.5 min. 155 @ 3 min.
Time in Tunnel Range (mm:ss)	00:21 - 03:07	00:21 - 03:07	00:23 - 03:19	00:31 - 04:40	00:22 - 03:10	00:44 - 06:20	00:22 - 03:10	00:44 - 06:20	00:22 - 03:10
Belt Speed	0.7 - 9.3 FPM* (0.2 - 2.8 MPM)	0.7 - 9.3 FPM* (0.2 - 2.8 MPM)	0.7 - 9.3 FPM* (0.2 - 2.8 MPM)	0.7 - 9.3 FPM* (0.2 - 2.8 MPM)	0.7 - 9.3 FPM* (0.2 - 2.8 MPM)	0.7 - 9.3 FPM* (0.2 - 2.8 MPM)	0.7 - 9.3 FPM* (0.2 - 2.8 MPM)	0.7 - 9.3 FPM* (0.2 - 2.8 MPM)	0.7 - 9.3 FPM* (0.2 - 2.8 MPM)
Belt Motor Torque	100 in-lb	100 in-lb	100 in-lb	100 in-lb	100 in-lb	100 in-lb	100 in-lb	100 in-lb	100 in-lb
Exhaust (Free Air)	177 CFM (5 CMM)	280 CFM (7.9 CMM)	280 CFM (7.9 CMM)	280 CFM (7.9 CMM)	388 CFM (11 CMM)	776 CFM (22 CMM)	550 CFM (15.6 CMM)	1,100 CFM (31.2 CMM)	1,100 CFM (31.2 CMM)
Exhaust Diameter	3" (7.62 cm)	6" (15.24 cm)	6" (15.24 cm)	6" (15.24 cm)	4" (10.16 cm)	4" (10.16 cm)	6" (15.24 cm)	6" (15.24 cm)	2 @ 6" (15.24 cm)
Overall Length	48" (122 cm)	48" (122 cm)	48" (122 cm)	66" (168 cm)	88" (224 cm)	142" (361 cm)	88" (224 cm)	142" (361 cm)	102" (260 cm)
Overall Width	30" (76 cm)	41" (105 cm)	65" (166 cm)	41" (105 cm)	41" (105 cm)	41" (105 cm)	65" (166 cm)	65" (166 cm)	89" (226 cm)
Overall Height	50" (127 cm)	50" (127 cm)	50" (127 cm)	50" (127 cm)	50" (127 cm)	50" (127 cm)	50" (127 cm)	50" (127 cm)	54" (137 cm)
Belt Width	18" (46 cm)	30" (76cm)	54" (137cm)	30" (76cm)	30" (76cm)	30" (76cm)	54" (137cm)	54" (137cm)	78" (198 cm)
Chamber Length	18" (46 cm)	18" (46 cm)	18" (46 cm)	27"(69cm)	41"(104cm)	82" (210cm)	41"(104cm)	82" (210cm)	41"(104cm)
Chamber Infeed Width	21" (53 cm)	33.5" (85 cm)	33.5" (85 cm)	33.5" (85 cm)	33.5" (85 cm)	33.5" (85 cm)	57.5" (146 cm)	57.5" (146 cm)	81.5" (207 cm)
Chamber Infeed Height (adjustable)	2" - 7" (5 - 17.7 cm)	2" - 7" (5 - 17.7 cm)	2" - 7" (5 - 17.7 cm)	2" - 7" (5 - 17.7 cm)	2" - 7" (5 - 17.7 cm)	2" - 7" (5 - 17.7 cm)	2" - 7" (5 - 17.7 cm)	2" - 7" (5 - 17.7 cm)	2" - 7" (5 - 17.7 cm)
Heat Range @ Heater (at spec voltage)	0-900F* (0-482C*) @ 240V 0-1150F* (621C*) - booster	0-800F* (0-427C*) @ 240V 0-900F* (482C*) - booster	0-800F* (0-427C*) @ 240V 0-900F* (482C*) - booster	0-900F* (0-482C*) @ 240V 0-1150F* (621C*) - booster	0-900F* (0-482C*) @ 240V 0-1150F* (621C*) - booster	0-900F* (0-482C*) @ 240V 0-1150F* (621C*) - booster	0-900F* (0-482C*) @ 240V 0-1150F* (621C*) - booster	0-900F* (0-482C*) @ 240V 0-1150F* (621C*) - booster	0-900F* (0-482C*) @ 240V 0-1150F* (621C*) - booster
Heater Size	16" x 18" (40 x 45 cm)	16" x 24" (40 x 61 cm)	16" x 48" (40 x 122 cm)	12" x 24" (30 x 61 cm)	12" x 24" (30 x 61 cm)	12" x 24" (30 x 61 cm)	12" x 48" (30 x 122 cm)	12" x 48" (30 x 122 cm)	12" x 72" (30 x 183 cm)
Total Wattage	2,280 Watts Total	4,050 Watts Total	8,100 Watts Total	6,300 Watts Total	8,900 Watts Total	16,700 Watts Total	17,800 Watts Total	33,400 Watts Total	26,700 Watts Total
Cost/hr to operate based on 10 cents/kwh	23 cents	41 cents	81 cents	63 cents	89 cents	\$1.67	\$1.78	\$3.34	\$2.67
Electrical Specs** Chamber	240V / 12.5A / 1 Ph. / NEMA 6-15P	240V / 16A / 1 Ph. / NEMA 6-20P	240V / 32A / 1 Ph. / NEMA 6-20P	240V / 27A / 1 Ph. / 3 wire 50/60HZ	240V / 38A / 1 Ph. / 3 wire 50/60HZ	240V / 72A / 1 Ph. / 3 wire 50/60HZ	240V / 78A / 1 Ph. / 3 wire 50/60HZ	240V / 146A / 1 Ph. / 3 wire 50/60HZ	240V / 68A / 3 Ph. / 4 wire 50/60HZ
Electrical Connection	Cordset Included	Cordset Included	All amps shown are FLA (Full Load Amps), not recommended line size! Dryers on this page must be hard wired to the power terminal provided. A licensed electrician must be consulted and should refer to articles, 210.20(a), 215.3 and 310 of the NEC code.						
Optional Power	208V / 14.5A / 1 Ph. / NEMA 6-20P	240V / 12A / 3 Ph. / 4 wire 50/60HZ 380V / 8A / 3 Ph. / 5 wire 50/60HZ	240V / 21A / 3 Ph. / 4 wire 50/60HZ 380V / 14A / 3 Ph. / 5 wire 50/60HZ	380V / 11A / 3 Ph. / 5 wire 50/60HZ	380V / 15A / 3 Ph. / 5 wire 50/60HZ	380V / 28A / 3 Ph. / 5 wire 50/60HZ	240V / 45A / 3 Ph. / 4 wire 50/60HZ 380V / 30A / 3 Ph. / 5 wire 50/60HZ	240V / 85A / 3 Ph. / 4 wire 50/60HZ 380V / 56A / 3 Ph. / 5 wire 50/60HZ	380V / 46A / 3 Ph. / 5 wire 50/60HZ
Unit Weight	172 lbs (78 kg)	220 lbs (100 kg)	380 lbs (173 kg)	304 lbs (137.9 kb)	424 lbs (193 kg)	Call for details	636 lbs (289 kg)	Call for details	850 lbs (385.6 kg)



LittleRed dryers can be customized to meet just about any application or production needs.
Shown above is a 3 chamber LittleRed X3-D with additional conveyor extensions for longer infeed.

*0.3-2.9 FPM (0.1-0.9 MPM) with optional creeper gear