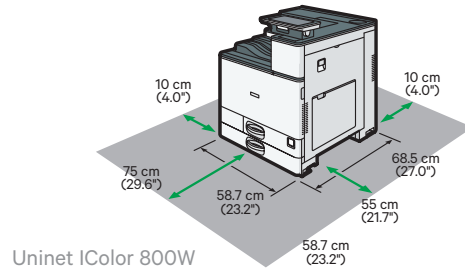


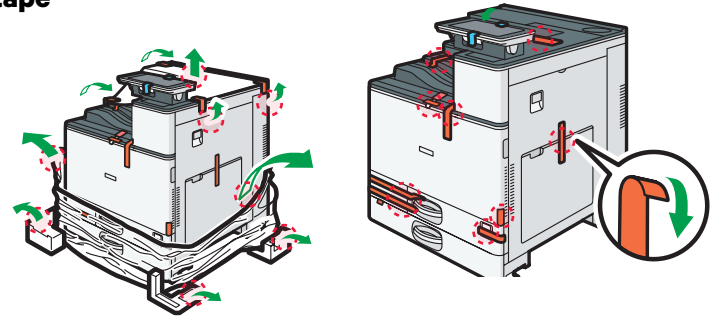
For detailed instructions, please refer to the Uninet iColor 800W Printer User Manual and the Uninet iColor ProRIP User Manual

### 1. Remove the packing materials and check the components



### 2. Remove orange tape

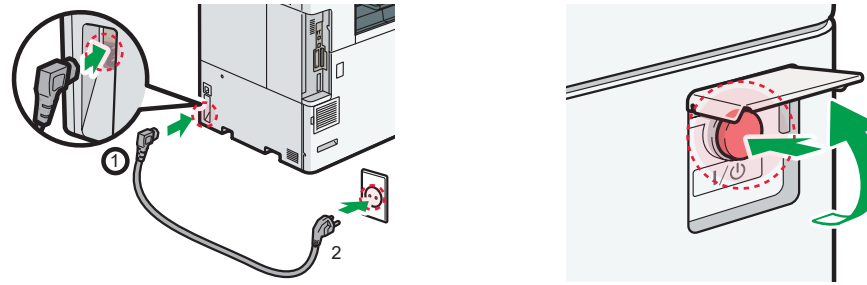
- From all sides



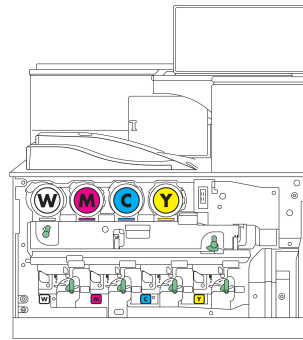
### 3. Remove orange security tape and lock from inside printer



### 4. Connect the printer power cord and turn on.



### 5. The Uninet iColor 800W Digital Color + White Transfer Media Printer has one configuration



Printer Display Reads	Replace with
Cyan low/out/empty	Cyan
Magenta low/out/empty	Magenta
Yellow low/out/empty	White
Black low/out/empty	Yellow

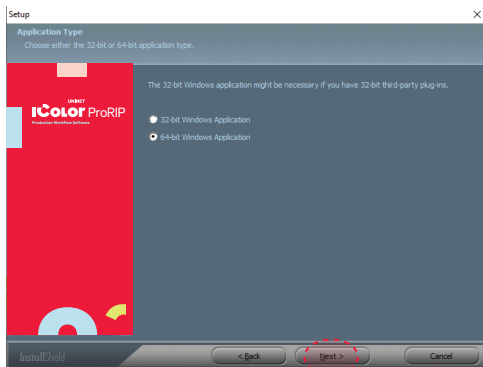


Replace with UniNet OEM supplies only!  
Incompatible supplies will damage the printer.

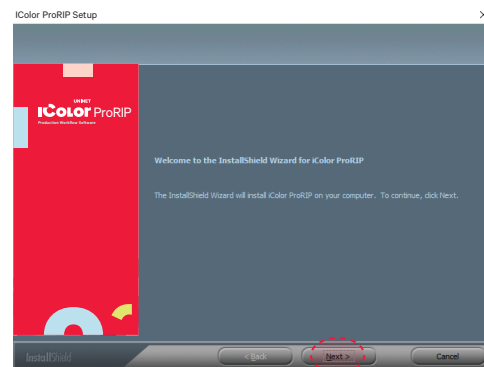
### 6. Install the Uninet iColor ProRIP (stored on the provided dongle)

- Choose your language and follow the install steps

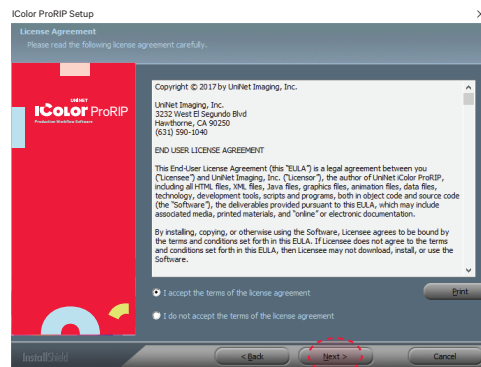
Please disable/uninstall any Anti Virus software before installation of the UniNet ProRIP



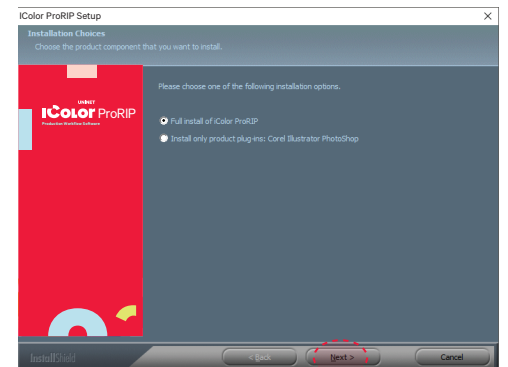
**SetUp**  
Application Type. Choose either 32-bit or 64-bit application type. To Continue, select Next.



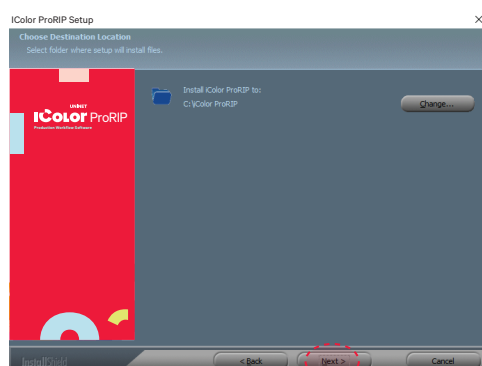
**iColor ProRIP Setup**  
InstallShield Wizard for iColor ProRIP  
The InstallShield Wizard will install iColor ProRIP on your computer. To Continue, select Next.



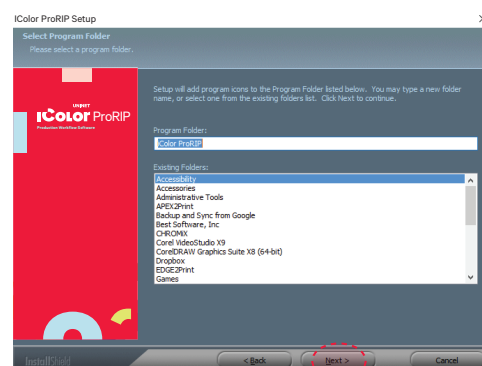
**iColor ProRIP Setup**  
License Agreement  
Please read the following license agreement carefully. If you agree, Accept and select Next.



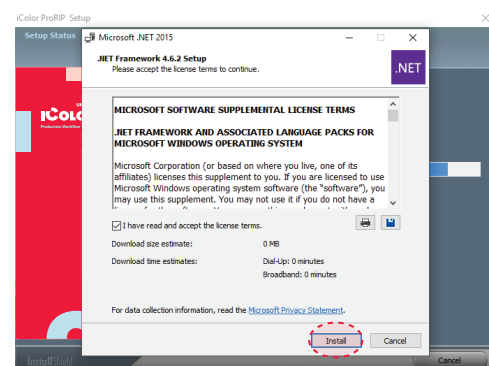
**iColor ProRIP Setup**  
Installation Choices  
Choose 'Full install of iColor ProRIP' and select Next.



**iColor ProRIP setup**  
Choose Destination Location. Select folder where setup will install files. To Continue, select Next.



**iColor ProRIP setup**  
Select Program Folder. Please select a program folder. Setup will add program icons to the Program Folder listed below. You may type a new folder name, or select one from the existing folders list. Select Next to continue.

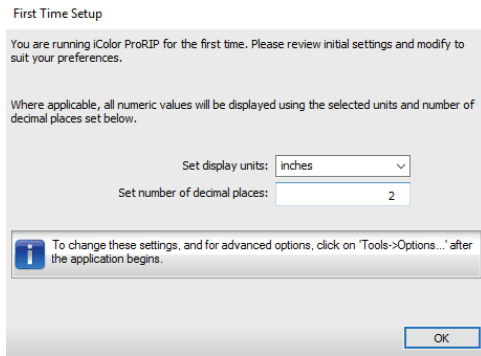


**iColor ProRIP Setup**  
Agree to license terms and select Install.

## 7. Uninet IColor ProRIP software

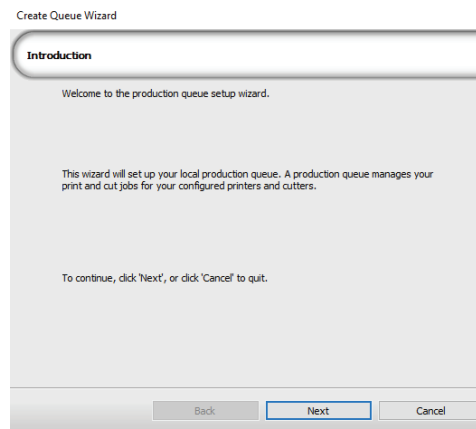
### First time Setup

- Ensure the ProRIP dongle is inserted and you are connected to the internet (required)
- Launch the software
- Set unit of measure and decimal places, then select OK.

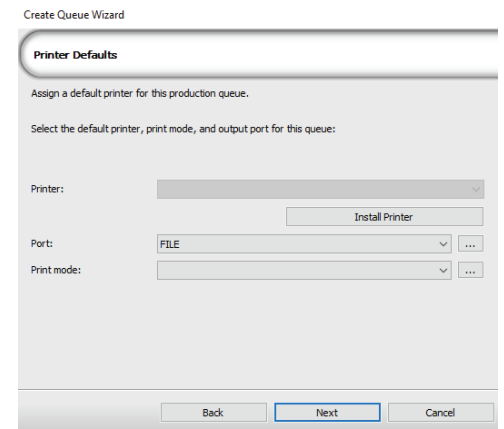


## 8. ProRIP opens, the Queue Wizard will begin the installation of the support files for your IColor 800 printer

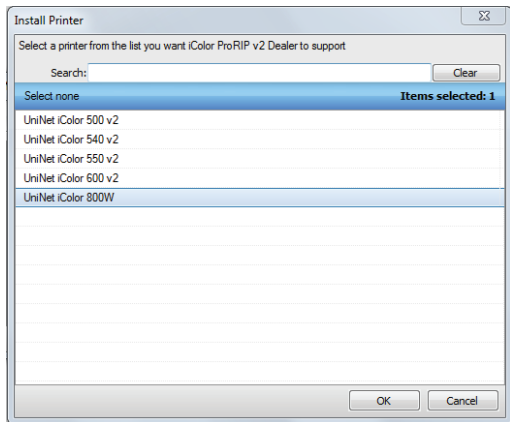
- Select next



- Select Install Printer

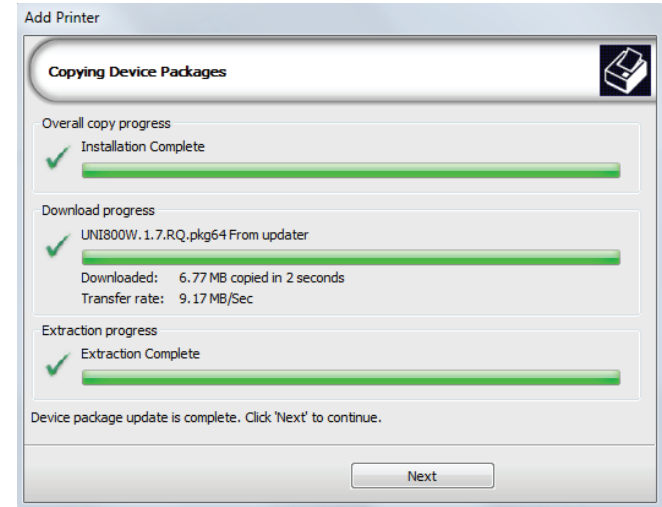
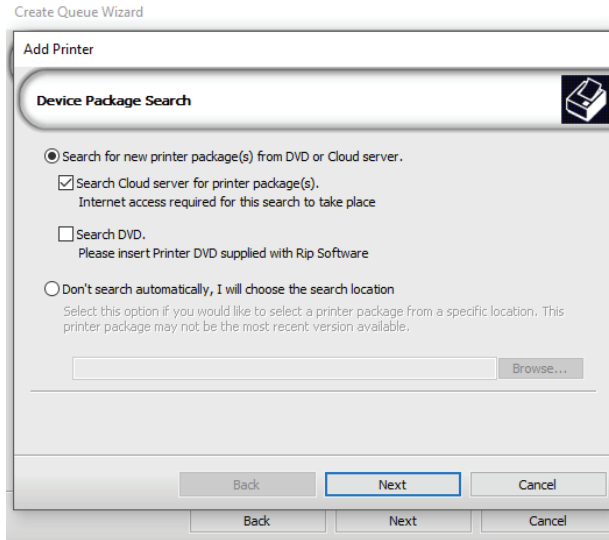


## 9. Select the IColor 800 printer from the support menu and select 'OK'



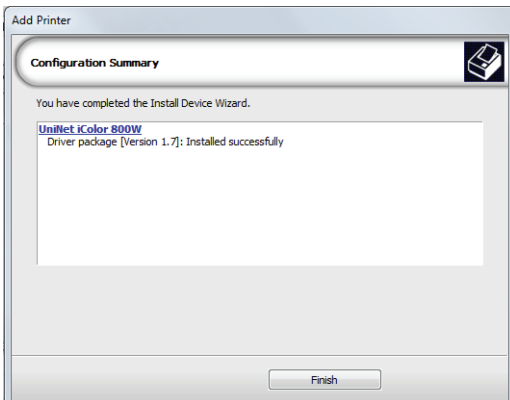
## 10. Device package search

- Select 'Search' for new printer package
- Select 'Next' to continue the installation



## 11. Select 'Finish' to complete the installation

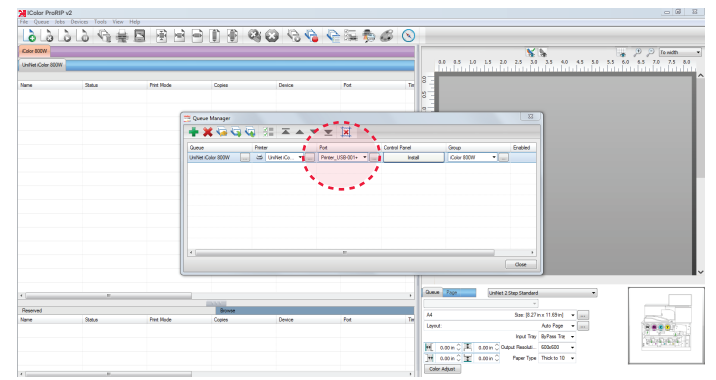
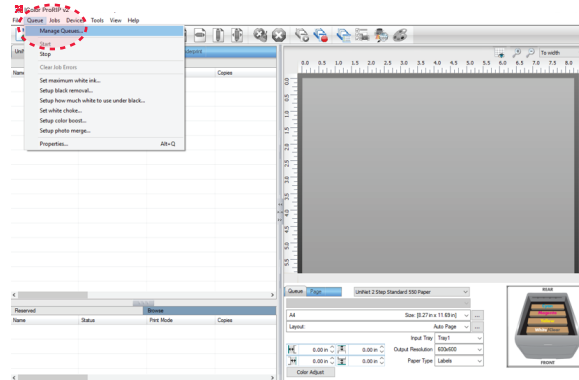
- Please continue for software configuration



## 12. Uninet IColor ProRIP printer queue setup

- Open the IColor ProRIP
- Select Queue/Manage Queues
- Select the proper port from the 'Port' drop down menu.
- If connected via network (recommended), choose TCP/IP.

- If connected by USB, choose the printer as identified in the drop down
- \* All other ports will update automatically, it is only necessary to do this for one queue
- Select 'Close'

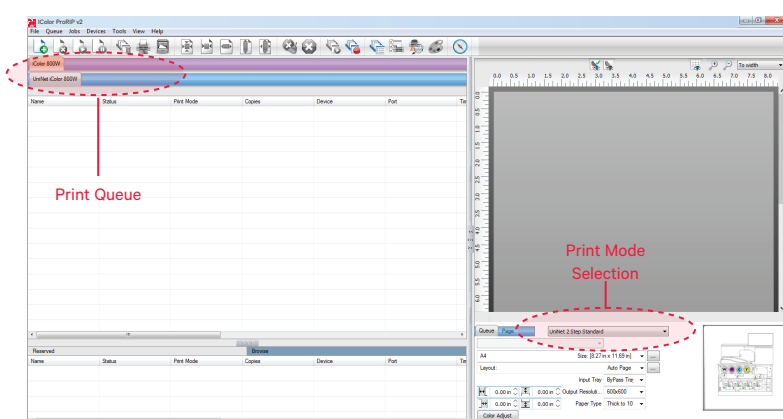


## 13. Select the proper Print Queue for your project

### A. Select your 'Print Que' and 'Print Mode'

- The 'Print Modes' have preset values for white coverage, choke, paper size, paper tray and mirror settings

These can be modified as needed



## 14. Import + print graphic

### A. Three ways to import graphics

- 1. Select the 'green plus' icon and navigating to the proper folder.
- 2. Select File > Import File
- 3. Simply dragging and dropping your file into the queue

### B. Select the desired file

- C. Select 'Print' icon in the menu bar.

