

Replacing absorption material for the flushing box

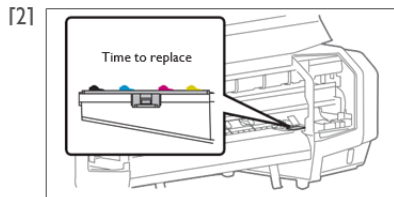
The flushing box is a part that keeps receiving ink discharged from the print head. Please replace the absorption material for the flushing box periodically. If used without replacing, it can cause damage to the print head.

Cleaning period:

- Approx. every 2 months (since it differs depending on usage frequency, please check periodically)

1. Checking steps

[1] Open the front cover.



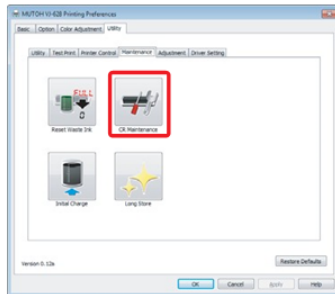
Check the absorption material for the flushing box.

- When there are lumps of ink rise from the frame of the flushing box, it is time to replace.

[3] Close the front cover.

2. Replacing steps

[1]



Open MSM and click CR Maintenance

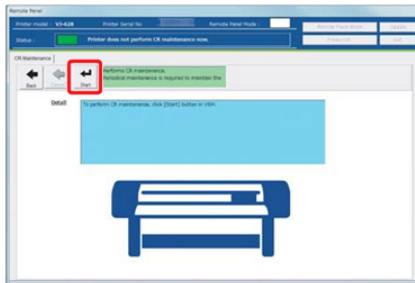
- The MSM remote panel opens.

Note

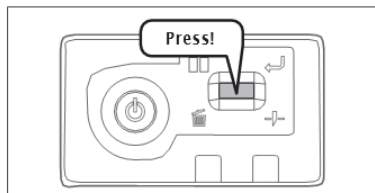
- MSM can be launched directly.



[2] Click [Start].



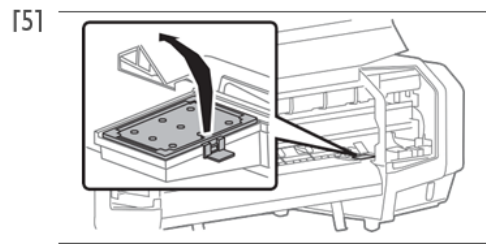
[3]



Short press the operation key on the operation panel.

- The carriage moves to the maintenance position inside the front cover.

[4] Open the front cover.

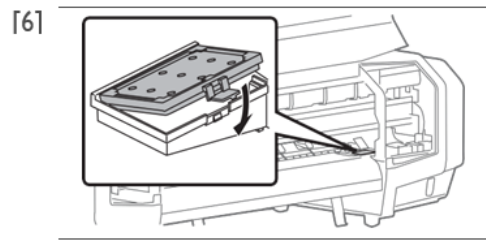


Remove the absorption material for the flushing box.

- Pull the tab up of the absorption material for the flushing box, and release the hook.

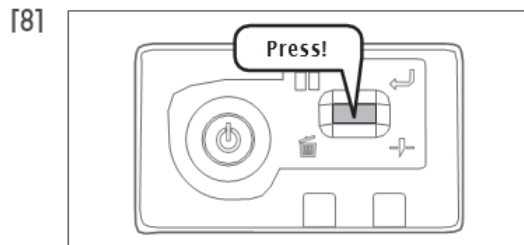
Important!

When removing the absorption material for the flushing box, be cautious of ink drops.



Attach new absorption material for the flushing box.

[7] Close the front cover.



Short press the operation key on the operation panel.

- The carriage moves to the original position inside the front cover.