

Installationsplan / Installation plan

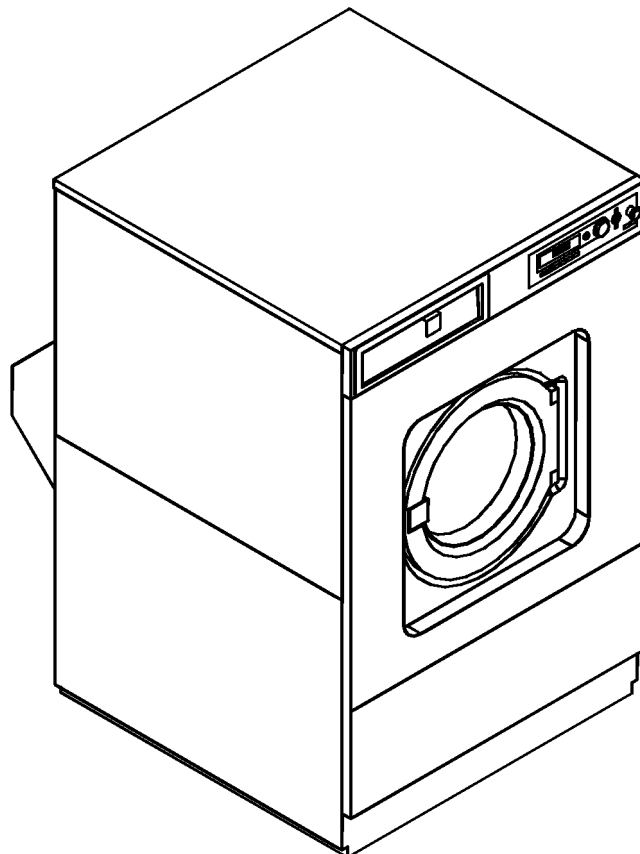
Installatietekening
Plan d'installation
Pianta di installazione

Plano de instalación
Plano de instalação
Σχέδιο εγκατάστασης

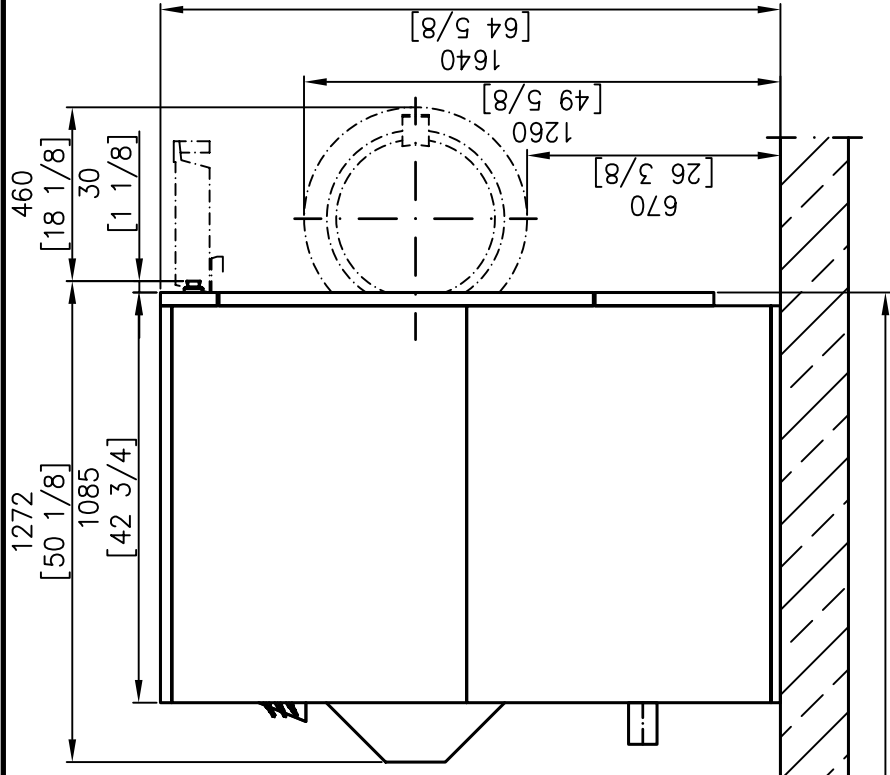
Asennusohje
Installasjonsplan
Installationsplan

en - US
en - CA

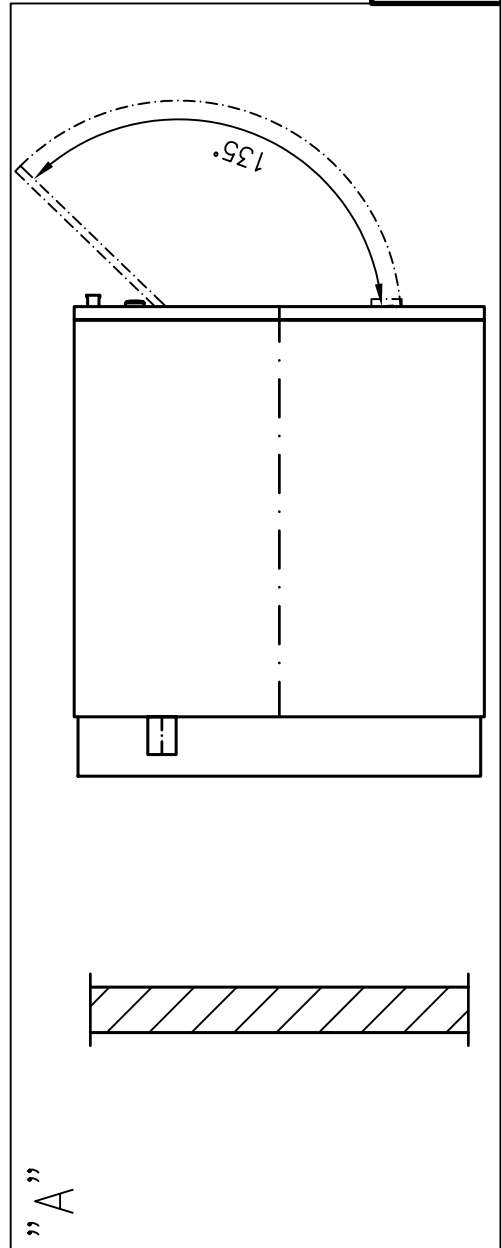
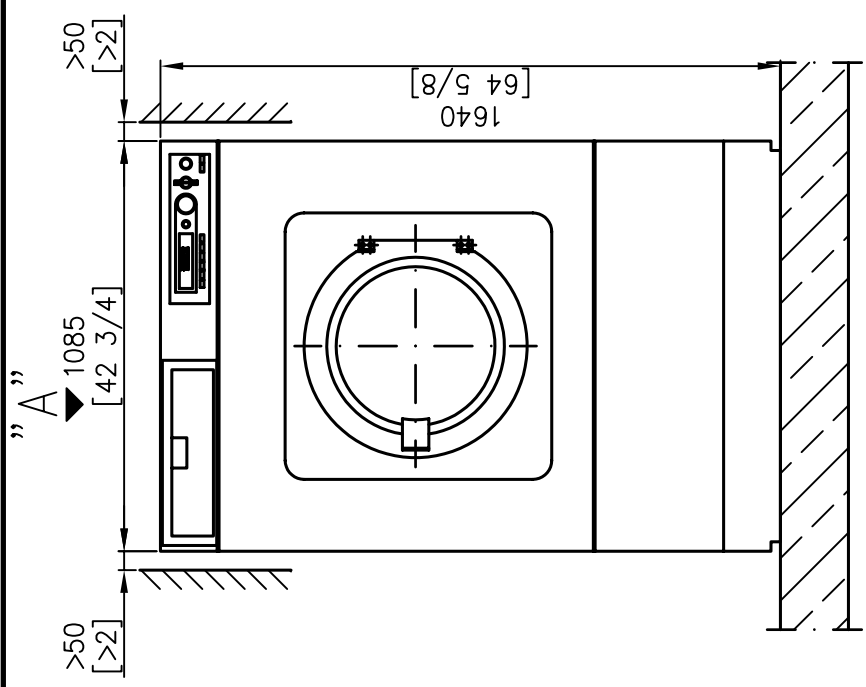
PW 6321 EL




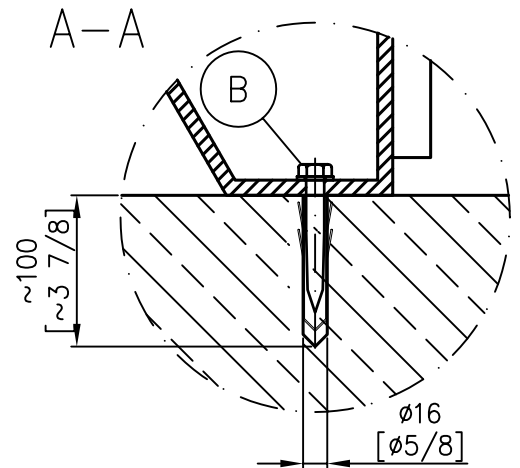
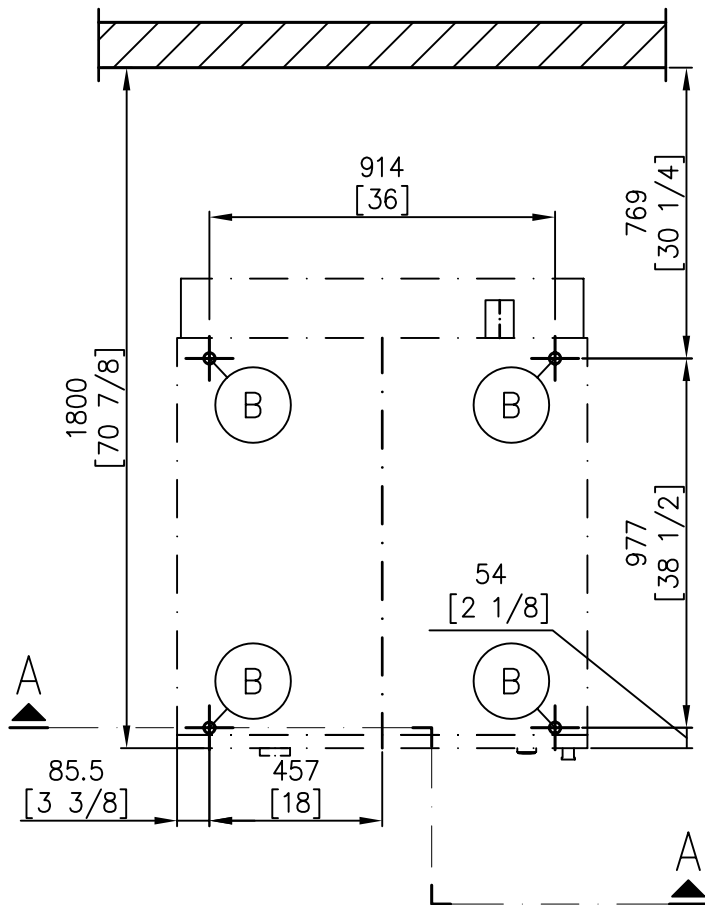
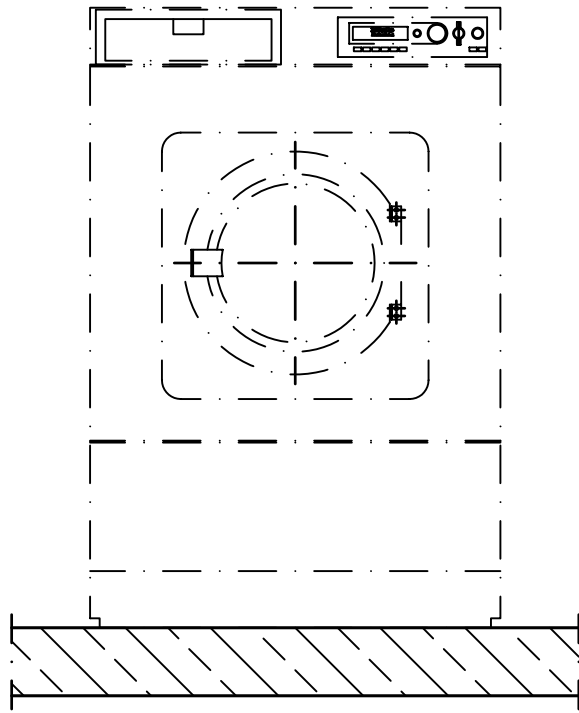
Materialnummer	/	Mat. no.:	06 564 490
Änderungsstand	/	Version:	03
Datum Zeichnung	/	Drawing date:	09.09.2007
Datum Legende	/	Legend date:	08.04.2014



1800
[70 7/8]



	Installationsplan/Installation plan Waschautomat/Washer PW 6321 EL	
	Date:	09.09.2007
	Page:	3
Name:	SB	



Miele
PROFESSIONAL

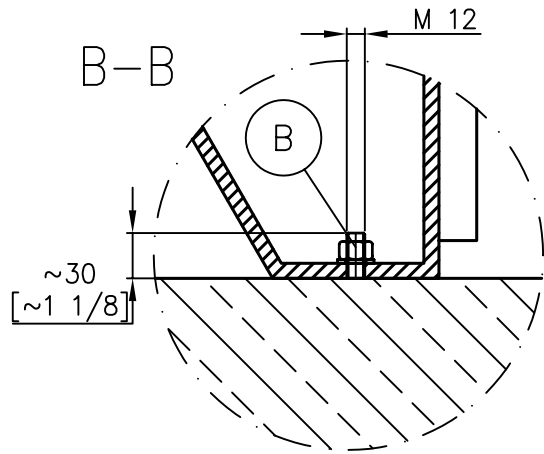
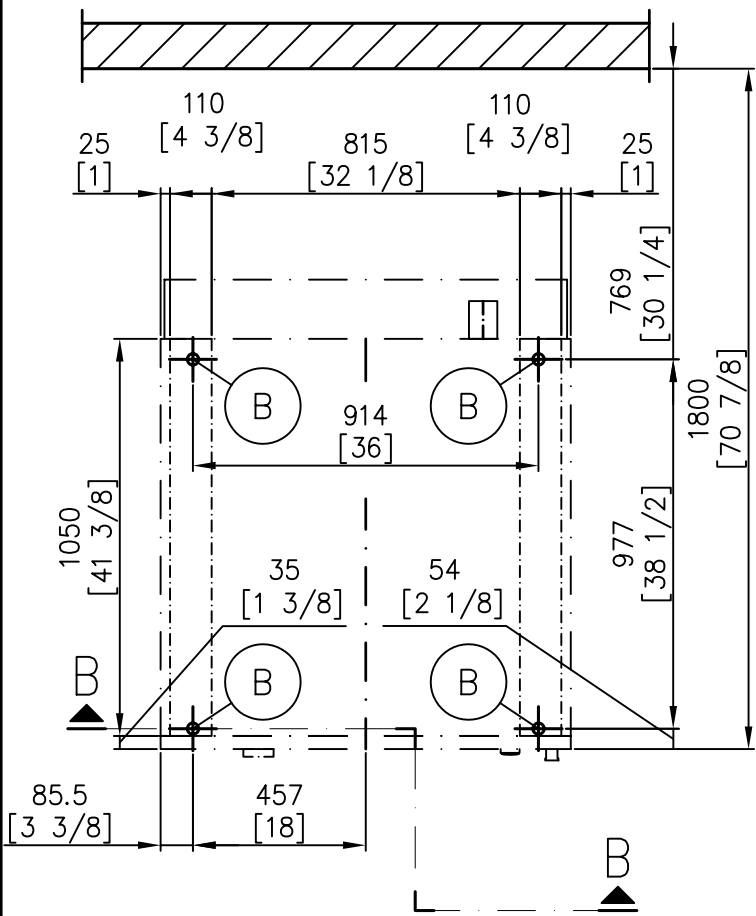
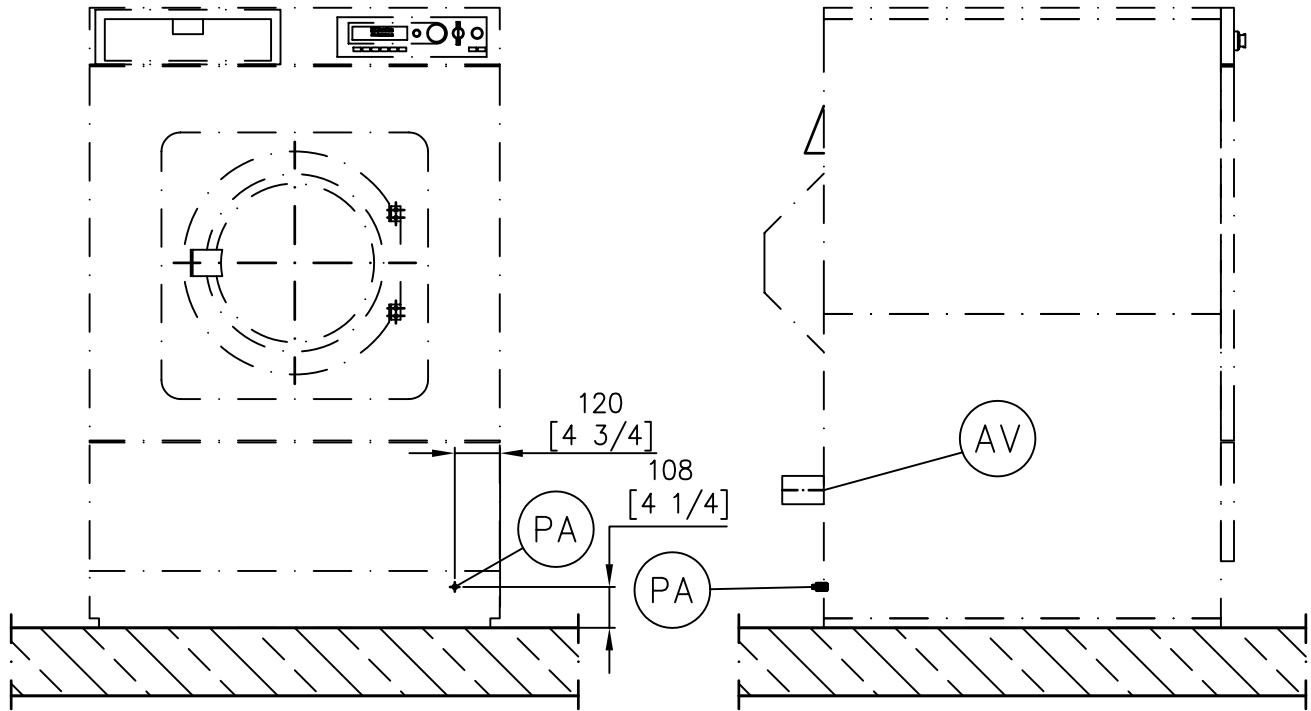
Installationsplan/Installation plan
Waschautomat/Washer
PW 6321 EL

Date: 09.09.2007

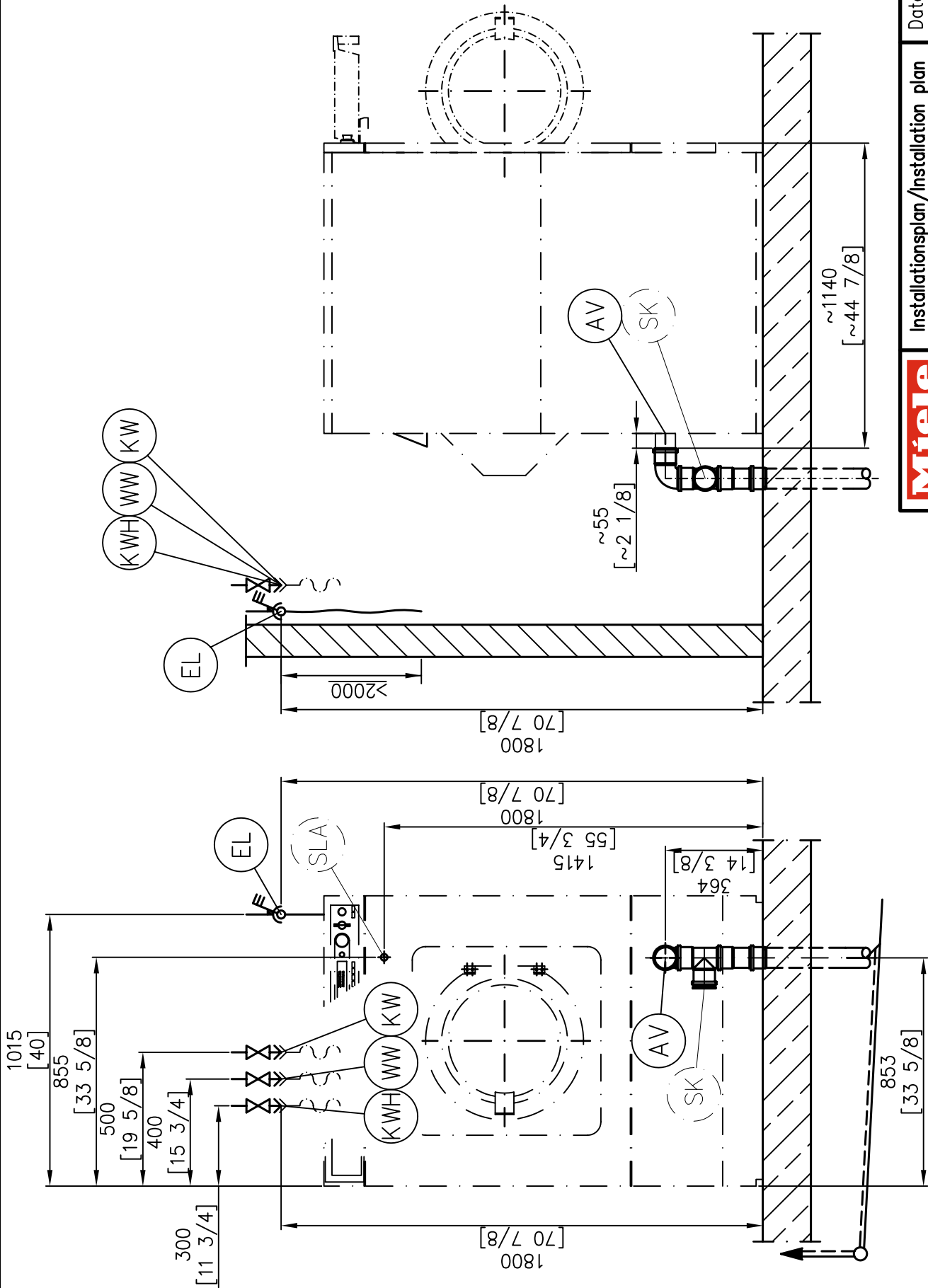
Page: 5


Name: SB

Sonderbau / Special Version OS



Miele PROFESSIONAL	Installationsplan/Installation plan Waschautomat/Washer	Date: 09.09.2007
	PW 6321 EL -OS-	Page: 6
	Name: SB	



	Installationsplan/Installation plan Waschautomat/Washer PW 6321 EL		Date: 09.09.2007
			Page: 4
			Name: SB

Technical datasheet



Washer:
Heating:

PW 6321
Electrical (EL)

Legend:



Circled, bold-typed abbreviations:
Connection required



Abbreviations surrounded by broken circle:
Connection optional or required, depending on model

en - US

en - CA

Options/Accessories:

OS	Special product	Offshore machine		
----	-----------------	------------------	--	--

Machine connections:

(EL)	Electrical connections		US	CA
	US CA	Standard voltage (delivery status) * Frequency Rated load Fuse rating Supply lead, wire size * If power supply includes a stinger leg, please call Technical Service at USA 1-800-991-9380 CDN 1-800-643-5361	3 AC 220-240 V 50-60 Hz 25 kW 3 x 80 A 4 AWG / 4C	3 AC 220-240 V 50-60 Hz 25 kW 3 x 80 A 4 x 25 mm ²
		Alternative voltage Frequency Rated load Fuse rating Supply lead, wire size	reversible	3 AC 208 V 60 Hz 20 kW 3 x 70 A 4 AWG / 4C
		Standard voltage (delivery status) * Frequency Rated load Fuse rating Supply lead, wire size * If power supply includes a stinger leg, please call Technical Service at USA 1-800-991-9380 CDN 1-800-643-5361	3 AC 480 V 60 Hz 35 kW 3 x 63 A 4 AWG / 4C	3 AC 480 V 60 Hz 35 kW 3 x 63 A 4 x 25 mm ²
(SLA)	Peak load management	Connection cable, min. cross-section Input leads should not be in direct contact with any heat source. Input signal via potential-free (galvanically separated) contact.	14 AWG	4 x 1,5 mm ²
(PA)	Potential equalization	External connection thread with washer and nut If necessary according to national installation regulations, establish a potential equalization with good pin connection.	3/8" x 1 3/8" 10 M	10 x 35 mm 10 M

			US	CA
(KW)	Cold water (Soft water)	Min. flow pressure Max. pressure Max. throughput (if hot water supply is not available) On-site connection thread Length of connection hose (supplied) Water requirements (average 140°F [60°C] program) Standard connection (with hot water connection) Additional requirements if hot water supply is not available.	14.5 psi 145 psi 9.25 (21.1) gal/min 1" MPT 59 1/16" 22.5 gal/h	14,5 psi 145 psi 35 (80) l/min 1" MPT 1.500 mm 85 l/h
(WW)	Hot water	Max. temperature Min. flow pressure Max. pressure Max. throughput On-site connection thread Length of connection hose (supplied) Water requirements (average for 140°F [60°C] program) If no hot water supply, connect hose to cold water!	158 °F 14.5 psi 145 psi 7.93 gal/min 1" MPT 59 1/16" 18.5 gal/h	70 °C 14,5 psi 145 psi 30 l/min 1" MPT 1.500 mm 70 l/h
(KWH)	Main water (Raw water) (Optional)	Min. flow pressure Max. pressure Max. throughput On-site connection thread Length of connection hose (supplied) Water requirements (average for 140°F [60°C] program) If no raw water supply, connect hose to cold water!	14.5 psi 145 psi 10.6 gal/min 1" MPT 59 1/16" 79.3 gal/h	14,5 psi 145 psi 40 l/min 1" MPT 1.500 mm 300 l/h
(AV)	Drainage via dump valve	Max. temperature Machine drain connection (d _a × s × l) On-site drain connection (d _i × s × l) Max. throughput Vented drainage required. If ventilation is insufficient, use with Miele kit, Mat. no. 05238090. Drain manifolds serving several machines must be of sufficient cross-section.	203 °F 3" x 1/16" x 4" 3" x 1/16" x 2" 52.8 gal/min	95 °C 75x1,9x100 mm 75x1,9x50 mm 200 l/min
(SK)	Foam vent	A drainage system for foam escaping from the drain vent can be built using standard drain pipe sections. A branch with an end cap should be provided for this purpose.		
(B)	Fittings (supplied)	Without base 2 × screws (Diameter × length) 2 × wall anchors (Diameter × length) Machine must be secured! Fixing materials provided for securing to concrete floor	1/2" x 3 9/16" 5/8" x 3 9/16"	12 × 90 mm 16 × 90 mm
	Machine data	Width Depth Height Secured dimensions (Width) Recommended clearance to rear wall (to machine front edge) Net weight Dynamic floor load during operation, max. Static load, max. Dynamic load max. Drum frequency, max. Average heat dissipation (depending on room temperature and selected program)	42 11/16" 50 1/16" 64 9/16" 43" x 67" 70 7/8" 1,430 lbs 8,975 N 7,456 N 1,520 N 16,7 Hz 1,690 W	1.085 mm 1.272 mm 1.640 mm 1.090 x 1.700 mm 1.800 mm 648 kg 8.975 N 7.456 N 1.520 N 16,7 Hz 1.690 W
Installation should only be carried out by authorized installers in accordance with all local and national regulations! Observe installation instructions when installing machine! All rights reserved!				