

EPSON®

SureColor F3070 Max

Sales Reference Guide



EPSON®

The new *SureColor F3070 Max* edition takes production garment printing to the next level.

Featuring Dual 2.6" PrecisionCore printheads, high-capacity ink packs, fast job processing, and advanced ink management system for reliable high-production garment printing.



SureColor F-Series DTG Family



SureColor F2270 Standard Edition



4-Color + White

\$18,995 MSRP



SureColor F3070 Max Edition



4-Color + White

\$59,995 MSRP

Printer Overview



Internal LED Lights

Emergency Stop Button

Interchangeable Platen System

Genuine Stand

Printer Overview



Easy Access Covers

4.3" Touchscreen & Speaker

Operation Buttons

Bulk Ink Solution (1.5L x 7 slots)

Easy access to 4L waste ink bottle

PrecisionCore®

Advanced Printhead Technology



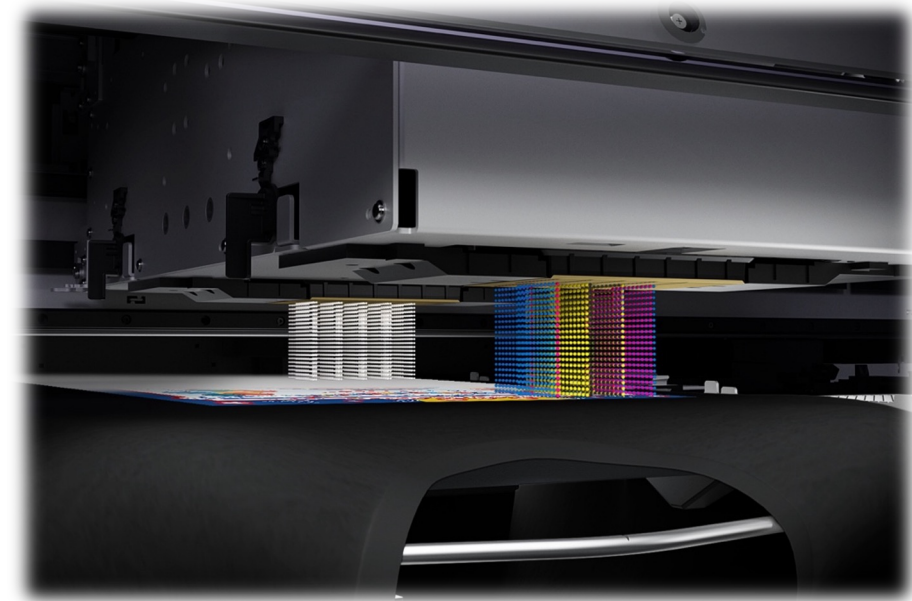
PrecisionCore Print Head Technology



PRECISIONCORE
PRINTHEAD

Advanced High-Performance Printhead Technology

- 8,000 nozzles per printhead x 2 heads = 16,000 total nozzles
- Printhead width of 2.6 inches delivers high productivity with extreme drop placement accuracy for outstanding print quality
- Variable-Sized Droplet Technology with resolution up to 1,200 x 1,200 dpi
- New Nozzle Verification Technology automatically detects nozzle health and can correct without user interruption
- Built-in redundancy allows production to continue should an issue occur
- User replaceable head design can be completed in minutes



UltraChrome Ink

Advanced Ink Chemistry

The logo for Epson UltraChrome DG Ink is centered within a large white circle. It features the text "EPSON ULTRACHROME" in a bold, sans-serif font, with "EPSON" in a smaller size. Below this, "DG" is written in a very large, bold, sans-serif font, and "INK" is written in a smaller, bold, sans-serif font to its right. A stylized, three-dimensional oval shape, resembling a lens or a drop, is positioned behind the text, creating a sense of depth and focus.

EPSON ULTRACHROME
DG **INK**

UltraChrome DG Ink Technology



High-Performance Ink Technology

- CMYK + White Ink set offers bold range of color and bright whites
- 1,500 mL individual color capacity sealed ink packs
- Inks conforms to Oeko-Tex ECO PASSPORT standard and ECOCERT Global Organic Textile Standard - When applied to fabric and appropriately fixed, garments have been determined safe for use by adults, children, and babies.¹



¹ When applied to fabric and appropriately fixed Epson UltraChrome DG ink has passed the standards set by GOTS-ECOCERT and OEKO-TEX® ECO PASSPORT. For further details on these standards please visit www.ecocert.com and www.oeko-tex.com/ecopass.

Pretreatment Liquid



Developed by Epson Specifically for Epson UltraChrome DG Inks

- Required to bind White Ink to the garment with exceptional durability and opacity
- ECO PASSPORT Tested and Verified by OEKO-TEX
- Meets all international safety requirements

Extremely Soft Hand

- Unlike other pretreatment fluids - the finished garment feels very soft
- No sticky residue or odor

Two formulations - Competitively Priced

- Cotton pretreatment: 20L concentrate yields 60 liters when diluted
- Polyester pretreatment: 18L ready to use

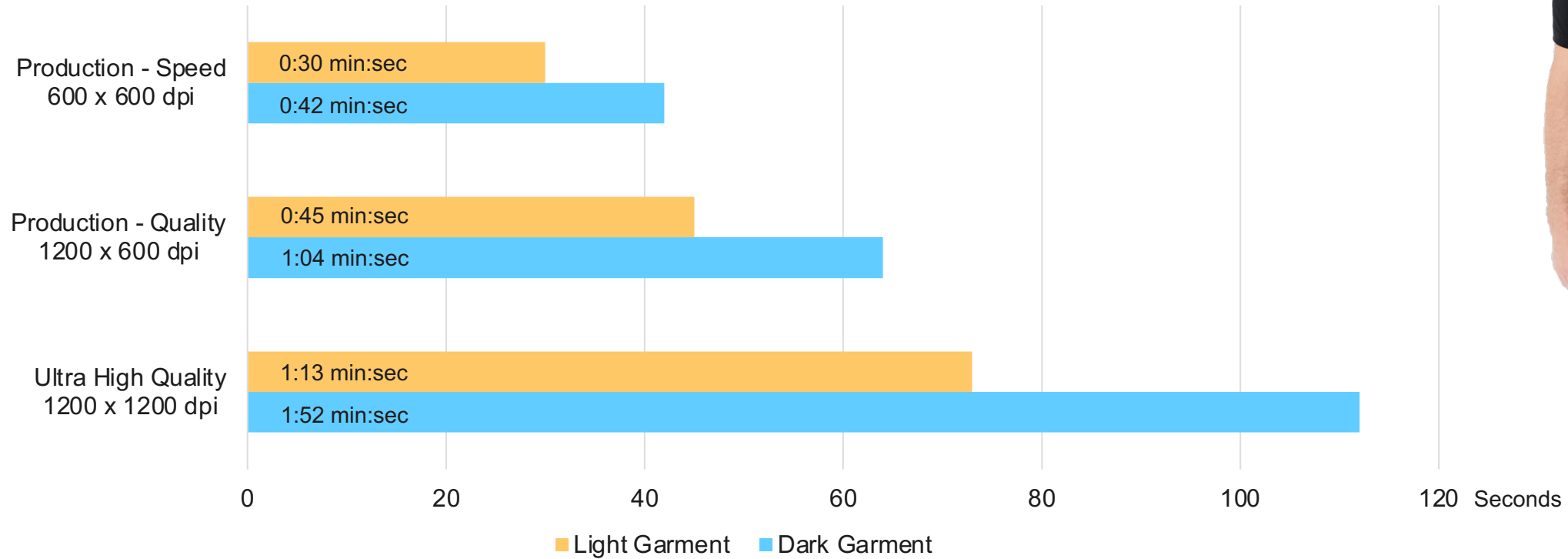
Performance

Efficiently Produce Sellable Quality Output



Print Performance

Full Size 14" x 16" Print



Print time measured reflect the continuous period beginning when the printer start button is pressed, includes the garment entering the printer, ink applied to the garment, garment exiting the printer, and ends when the platen motion stops for garment removal.

Computer processing, network transmission, loading and unloading of garments are not included in these times. Actual print times may vary. Testing conducted by Epson America, Inc. as of June 2020



Product Features

Enhanced Usability



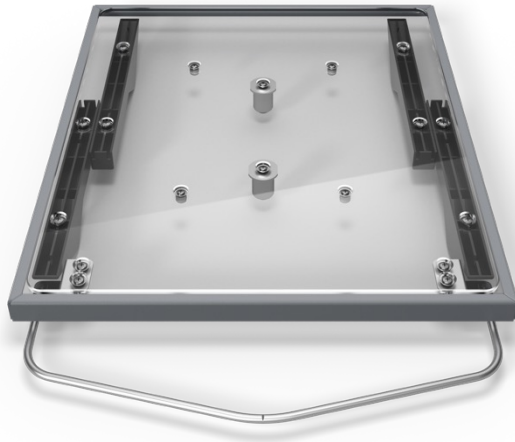
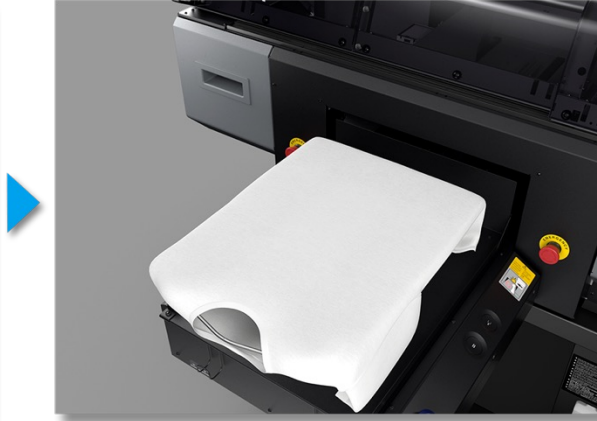
Garment Thickness Optimization



Automatic Garment Thickness Optimization

- Garment thickness measured by 6 sensors during the loading process every 1/100th of a second to create a garment height profile
- Printer determines the garment minimum, average, and maximum heights
- Printhead carriage physically moves up/down to the optimal height as desired by the media settings (min, avg, or max thickness)
- The process is automatic and performed seamlessly in parallel with other pre-print tasks

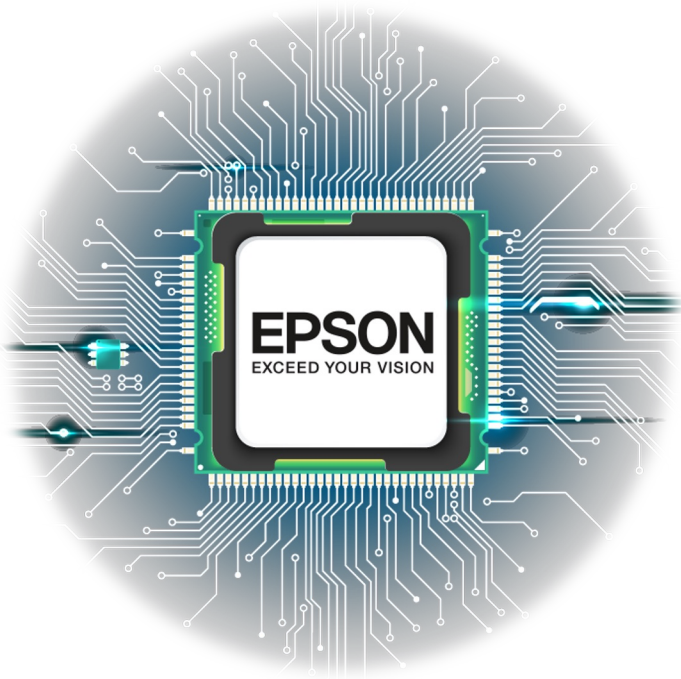
Quick-Load Hanger Grip Platen



High-Speed Garment Loading System

- Hanger platen helps operators quickly load garments with proper alignment
- 2nd Generation Grip Pad reduces loading and unloading time by adhering to the platen surface keeping platen sides smooth for garment to slide easily
- Platen Hoop can be used with the grip pad in place if desired

High Performance Processing

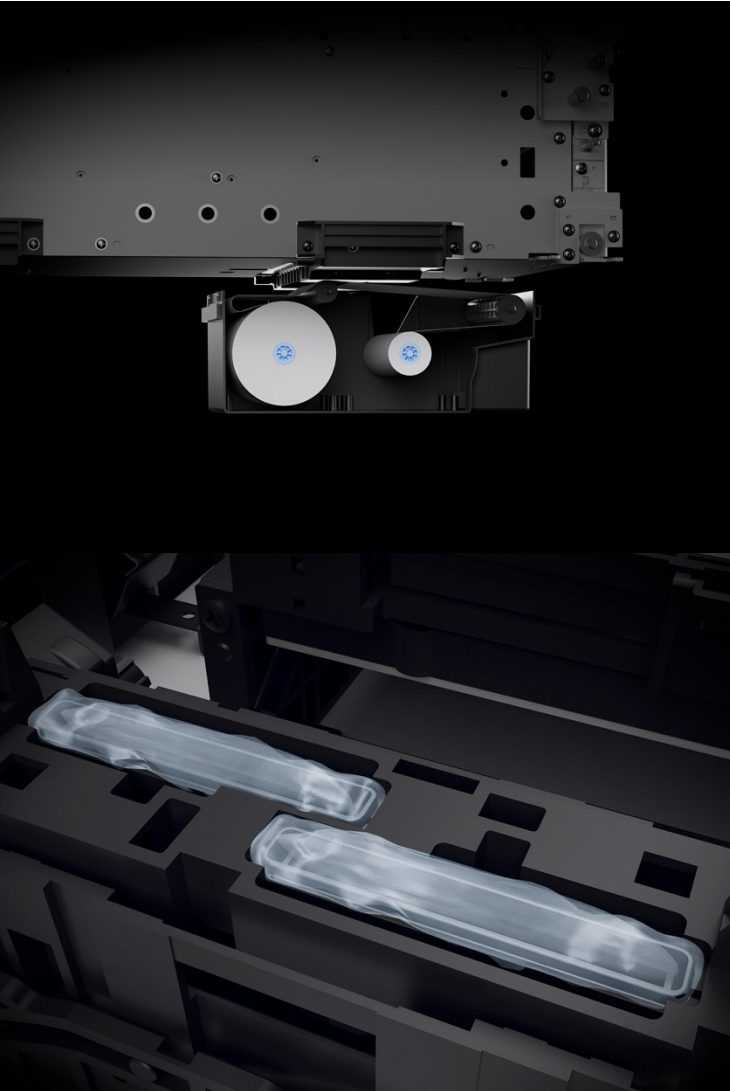


Streamlined Processing for greater productivity

- Print preparation tasks run concurrently with garment loading
- Printer is ready to print as data begins streaming to printer; no need to wait for the entire image to load
- Post-printing tasks are run quickly while user unloads the garment

The result: Less time spent waiting - More time printing

Automated Cleaning System



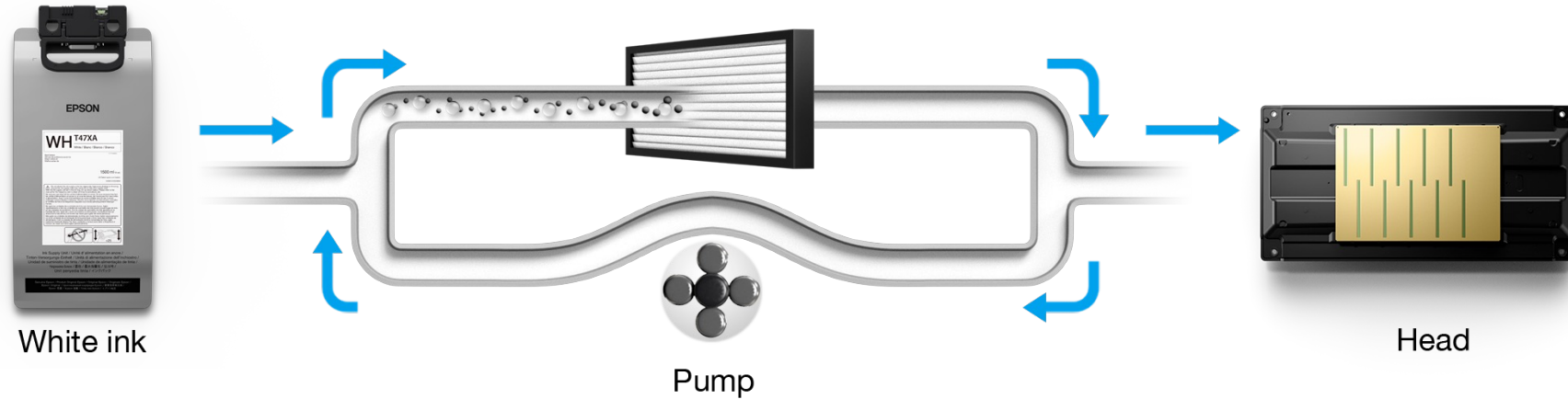
Head Cleaning Fabric Wiper Cassette

- Maintains both printheads in pristine condition
- Enables dry capping of heads without risk of ink buildup or need for expensive head soaking liquid
- Spend more time printing and less time maintaining - No daily maintenance
- Simple user replaceable cassette last for approximately 2,500 shirts

Automated Cap Cleaning

- Inexpensive maintenance liquid is used to flush the cleaning caps and tubing to prevent ink build up and removal of dust and fibers.
- Minimal user maintenance time required – only a few minutes once a week

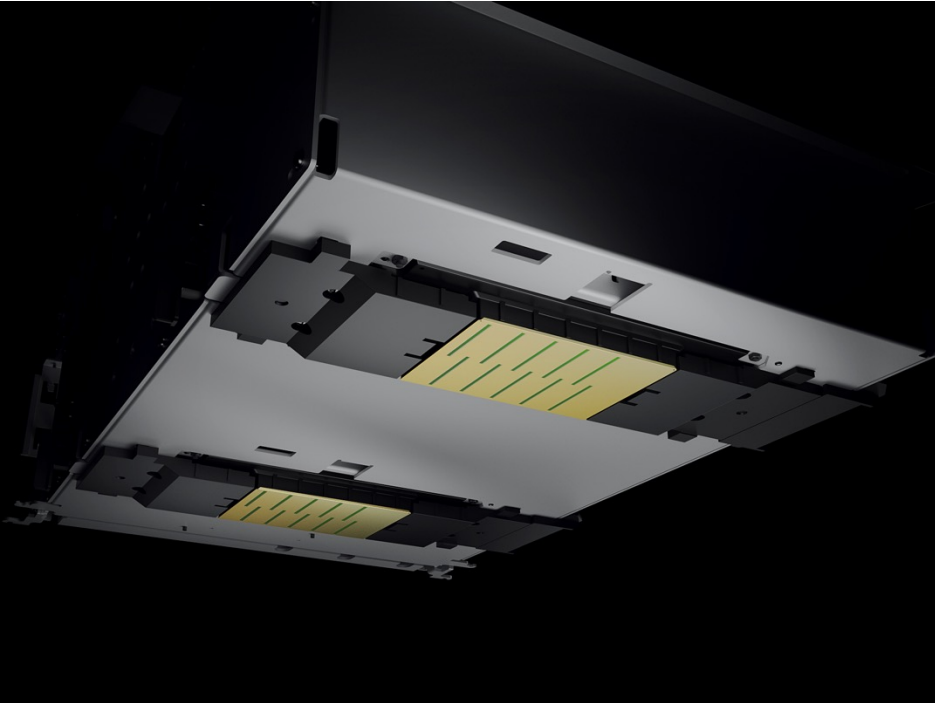
Enhanced White Ink Management



Automatic White Ink management for enhanced reliability

- Keep the printer ready to use with Background white ink circulation
- Triple Ink filtration system removes ink contaminates for reduced nozzle clogging
- These process are automatic and performed seamlessly in parallel with other pre-print tasks

Dust & Fiber Control



Active Air Filtration

- Airborne dust and fiber is actively removed from the print environment with the use of three active air filters

Printhead Dust and Fiber Guard

- Minimizes garment fibers and dust particles from contacting the print head.
- Static charged zones around each printhead minimizes airborne dust and fibers from causing blocked print nozzles
- Automatically cleaned with the printer's fabric wiper

Workflow

Productive Workflow Solutions



Garment Creator 2 Software

Advanced DTG Imaging Software Developed by Epson

- Up to 4x the processing resolution than previous generation software
- Raster-based software application supporting sRGB - PNG, TIFF, JPEG and BMP files
- Available for both Apple® macOS® and Microsoft® Windows® platforms

Easy-to-Use Garment Layout

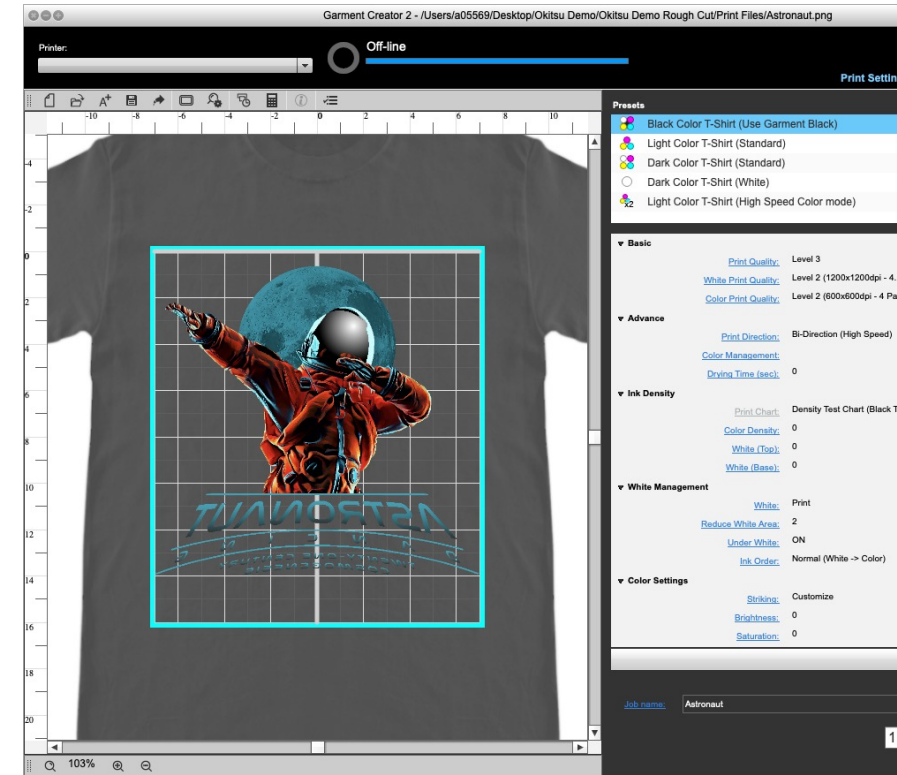
- Choose your platen size, place your image file(s), position, scale, rotate, etc. - then print
- Add multiple images and text for greater customization of the garment

Robust Print Controls

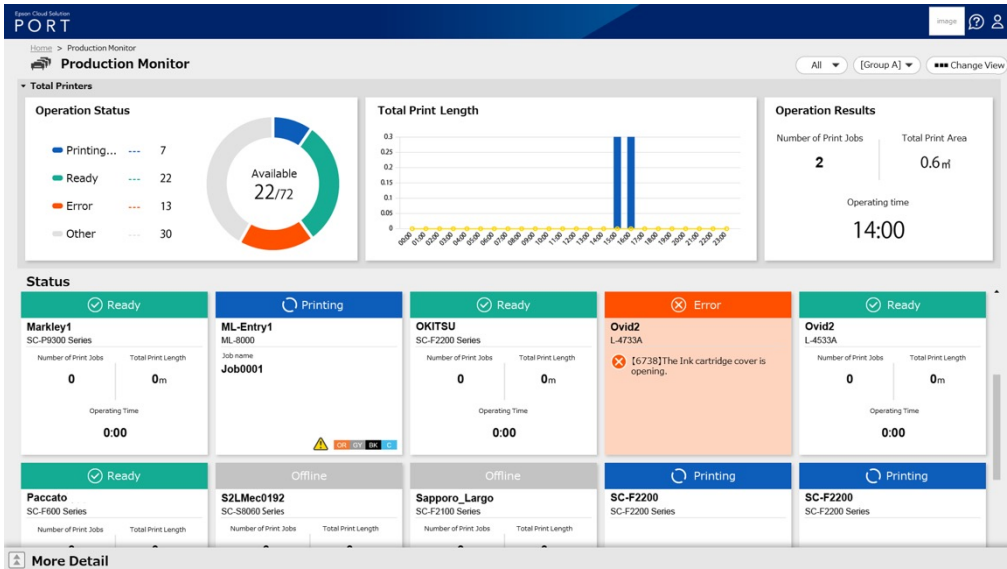
- Powerful “Use-Garment-Black” feature for reduced imaging costs on black garments
- Independent controls for color and white imaging

Streamline Production Workflow

- Setup common workflows using Garment Creator Easy Print System hot-folders to speed up operations.

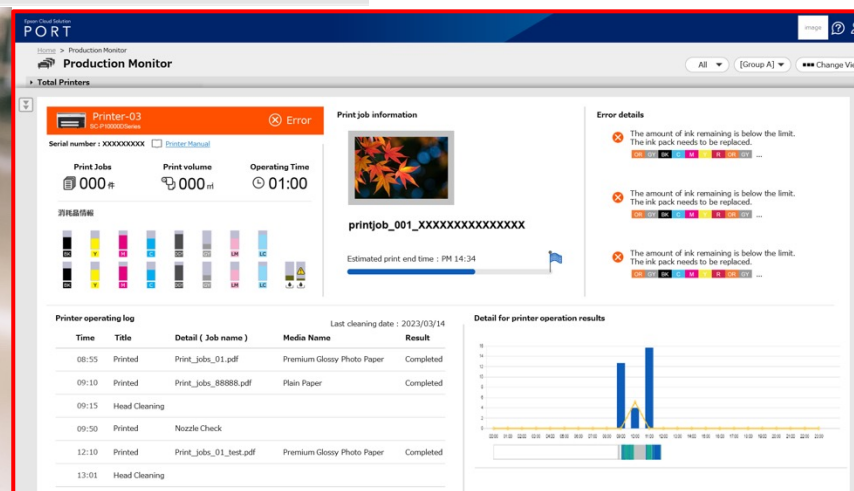


Epson Cloud Solution PORT



Operational dashboard view of your production line

- Cloud based print fleet activity reporting
- View production rates, printer utilization, up-time, and more from any connected device
- Live information to optimize your production efficiency
- Job Accounting to provide greater insight to manage your business
- Advanced service and support capability
- <https://www.epson.com/PORT>



Use of Epson Cloud Solution PORT requires an internet connection and supported web browser

Accurate Color Selection



Save Time with a Streamlined Color Workflow

- Eliminate guess work with the available Epson SD-10 Spectrophotometer
- Measure physical color samples with the push of a button
- Measured colors can be saved to Epson Cloud Solution PORT and imported into Adobe Illustrator with a plug-in
- Create Custom Color Palette libraries with ease
- Verify print accuracy for even the most demanding users

Epson SD-10 Spectrophotometer sold separately

Product Support

Industry Leading Warranty and Service Programs



Epson Preferred Plus™ Service Program

3 Year Epson Preferred Plus Service plans include:

- Technical phone support Monday thru Friday from 6:00am until 6:00pm PST
- Typically next-business day onsite service if necessary
- Covers the printer, genuine Epson optional accessories, and Epson software
- Preferred Plus Service plan can be extended up to a total of 5 years of continuous coverage



Built by Epson, Supported by Epson

- You no longer need to worry about who to call if something goes wrong
- Epson handles the technical and break-fix support

Product comes with a 3-year Epson Preferred Plus Service plan. Extended Service plans available for up to a total of 5 years of continuous coverage. For on-site service, geographic limitations may apply. Service request must be received by 1 p.m. Pacific Time, Monday through Friday, excluding holidays. See limited warranty or service plan for details.

Specifications



Weight, Dimensions and Ordering Information

SureColor F3070 Max Printers Include

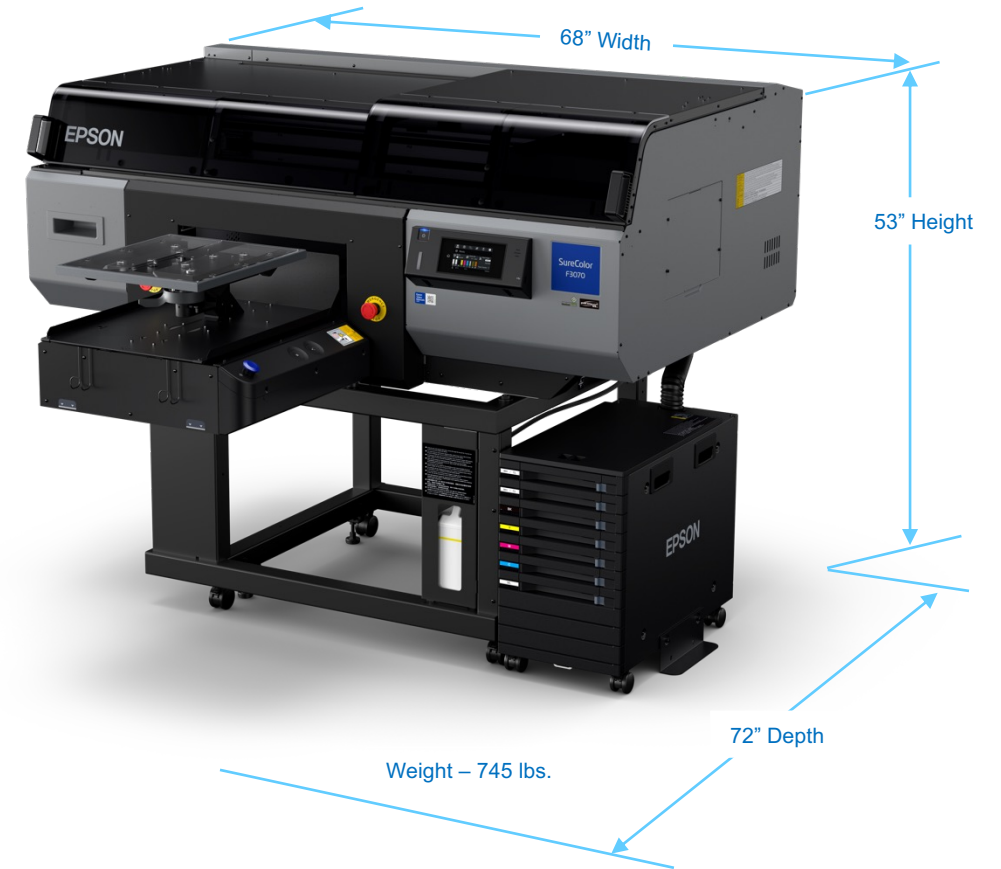
- 14" x 16" Medium Quick-Load Hanger Platen
- Medium Garment Grip Pad
- Full Set of Inks (6 x 1,500mL Packs)
- Maintenance Liquid (1,500 mL Pack)
- 3-Year Epson Preferred Plus Service Coverage
- Freight, Delivery and Installation

Ordering Information

	Part #	Description
<i>Printer</i>	SCF3070ME	SureColor F3070 Max Edition

<i>Accessories</i>	C13S210105	Head Maintenance Kit
	C13S210107	Flushing Pad
	C13S210109	Anti Drying Printhead Cap
	C13S210111	Replacement Air Filter Set

<i>Consumables</i>	T47K12N	UltraChrome DG2 Black (800 mL)
	T47X22N	UltraChrome DG2 Cyan (800 mL)
	T47X32N	UltraChrome DG2 Magenta (800 mL)
	T47X42N	UltraChrome DG2 Yellow (800 mL)
	T47XA2N	UltraChrome DG2 White (800 mL)
	T47XB2N	Maintenance Liquid (800 mL)
	T44R900	Cleaning Liquid (800 mL)
	T43R100	Pretreat Liquid Concentrate (20 L)



Electrical Specifications



Connect to standard available 120V outlet

Power Requirements:

- **Number of connections: 2 total – Printer x 1, Ink System x 1**
Two power cords included (120V NEMA 5-15P to IEC 320-13C)
- **Voltage: 100 – 240v AC, 50/60 Hz**
- **Power Consumption**
 - Printing: 168 W
 - Ready: 111 W
 - Sleep: 20 W

Available Platen Options



16"x20" Large Hanger
C12C936241

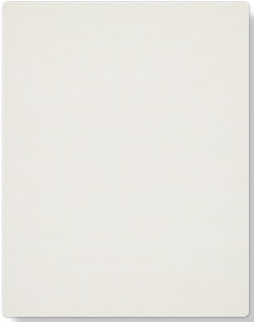


14"x16" Medium Hanger
C12C936261

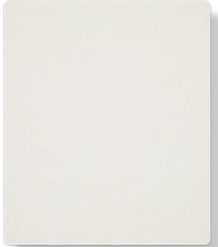


10"x12" Small Hanger
C12C936281

Replacement Fabric Grip Pads



Large
C13S210118



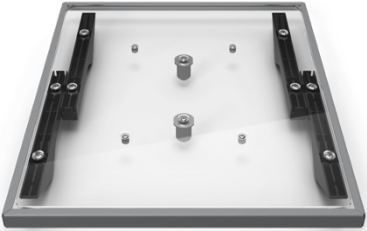
Medium
C13S210119



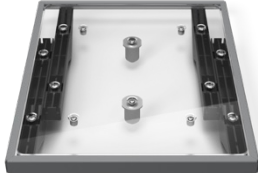
Small
C13S210120



16"x20" Large
C12C933921



14"x16" Medium
C12C933931



10"x12" Small
C12C933941



7"x8" Extra Small
C12C933951



4"x4" Sleeve
C12C933971



14"x16" Grooved
Polo & Zip-Hoodies
C12C933961

Why Epson



SureColor F3070 Max Summary



Impressive Garment Print Quality

- Purpose-built printhead, ink, and printer mechanism – produces outstanding print quality

High-Performance Garment Production

- One of the fastest garment printers in its price class – runs all day with little downtime

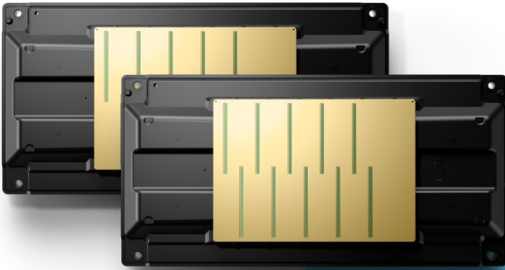
Exceptional Printer Reliability

- Developed specifically for high-performance, direct-to-garment imaging
- Industry Leading 3-Year Service coverage included. Extendable up to 5 years of continuous coverage

Low Cost-of-Ownership

- Large-capacity 1.5 Liter individual ink packs per color for a low cost-per-ml
- Attractive printer pricing for fast return-on-investment

Complete Epson Genuine Solution



PrecisionCore Printheads

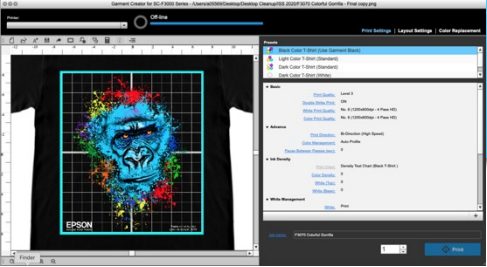


SureColor F3070



UltraChrome DG Inks

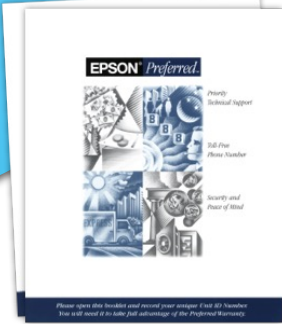
All key components have been developed in-house by Epson to deliver the best performance.



Garment Creator Software



Epson Precision Dot technology



Epson Service Plans



Specifications are subject to change without notice

Print speeds for the SureColor F3070 are based on print engine speed only, in bi-directional mode. Total throughput times depend upon front-end RIP, file size, printer resolution, ink coverage, networking, etc.

The SureColor F3070 is designed to use only Epson ink cartridges and refill packs and no other brands of new or refilled cartridges, or other brands of ink or bulk ink systems. Using Epson ink is important for reliable performance and high image quality.

*Oeko-Tex Standard specifies testing criteria for the presence of harmful substances within a textile product. The standard belongs to the International Association for Research and Testing in the field of Textile Ecology (Oeko-Tex).

Epson, Epson UltraChrome, PrecisionCore, and SureColor are trademarks or registered trademarks and EPSON is a registered logo mark of Seiko Epson Corp.

All other product brand names are trademarks and/or registered trademarks of their respective companies. Epson disclaims any and all rights to these trademarks.

© Epson America, Inc. 2023 TC 07.31.23