



# Epson® SureColor® P800 Series

17" Wide-Format Desktop 8-Color Inkjet Printers

Sales Reference Guide

Official Team Partner

**EPSON**  
EXCEED YOUR VISION



**AMG**  
**PETRONAS**  
MOTORSPORT

**EPSON®**

## Print Your Legacy.

At Epson, we understand the importance of what you do.

That is why we strive to develop imaging technology that never shows itself within your work. It's why we insist your work remain as beautiful as the day it was printed. And, it's the reason why we push the limits of imaging technology to ensure your work is limited only by you – and not the technology used to print it.

The SureColor P800 is available in one version:

- **Standard Edition** – for professional photography, fine art and commercial graphics





# SureColor P800 Standard Edition

for professional photography and fine art



## ■ Improved Black Density

- Higher-density Black pigments than our previous generation inks for a wider contrast ratio and enhanced clarity for both color and black-and-white exhibition-quality prints

## ■ Exceptional Print Permanence

- UltraChrome HD<sup>®</sup>, our Next-generation pigment ink technology, is independently rated by Wilhelm Imaging Research for up to 200 years for color and up to 400 years for black-and-white prints, more than twice our previous generation of ink<sup>1</sup>

## ■ Remarkable Detail and Reliability

- Epson MicroPiezo<sup>®</sup> AMC<sup>®</sup> printhead delivers high print speeds with variable-size ink droplets as small as 3.5 picoliters accurately shaped and positioned on the print

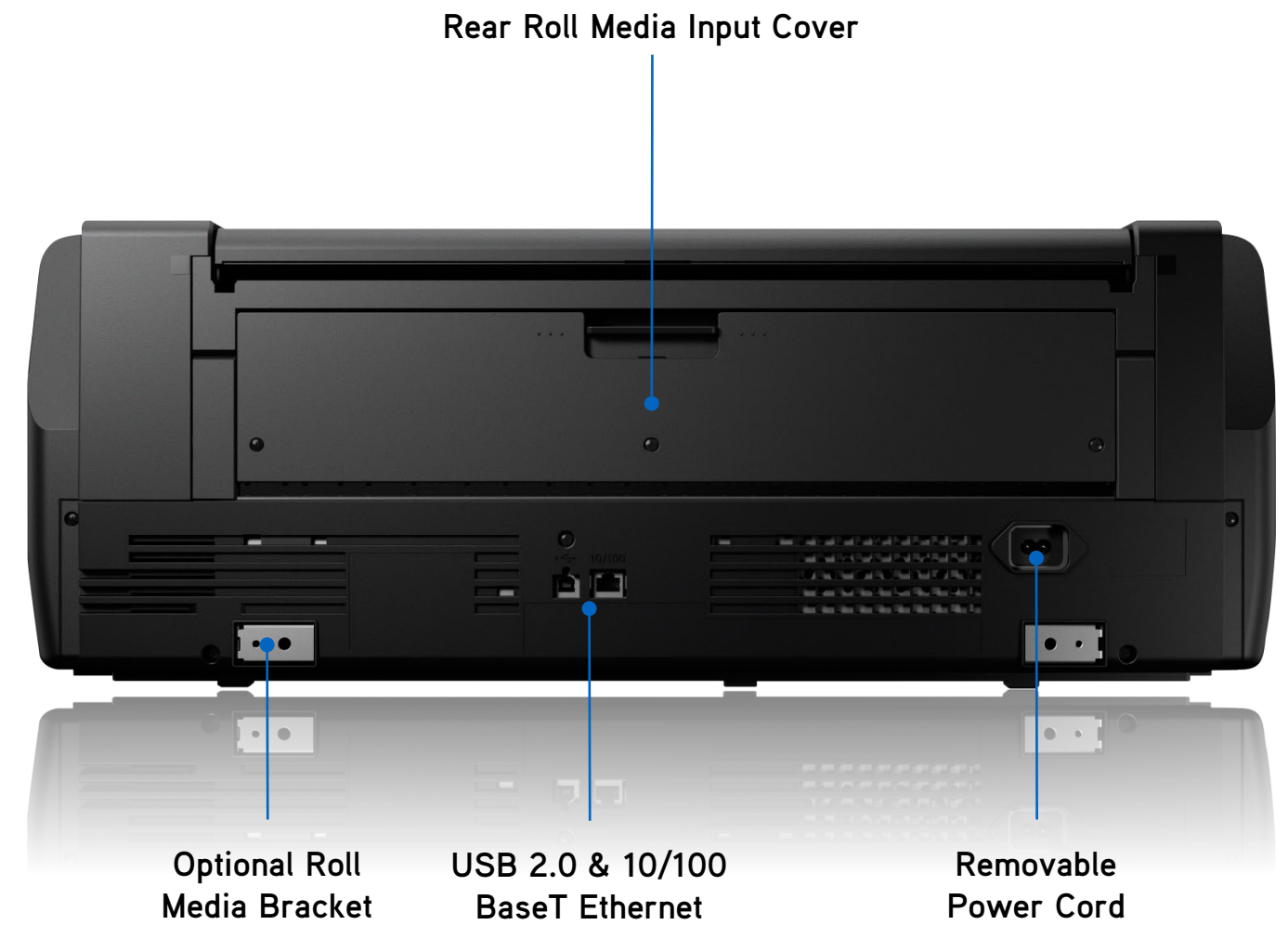
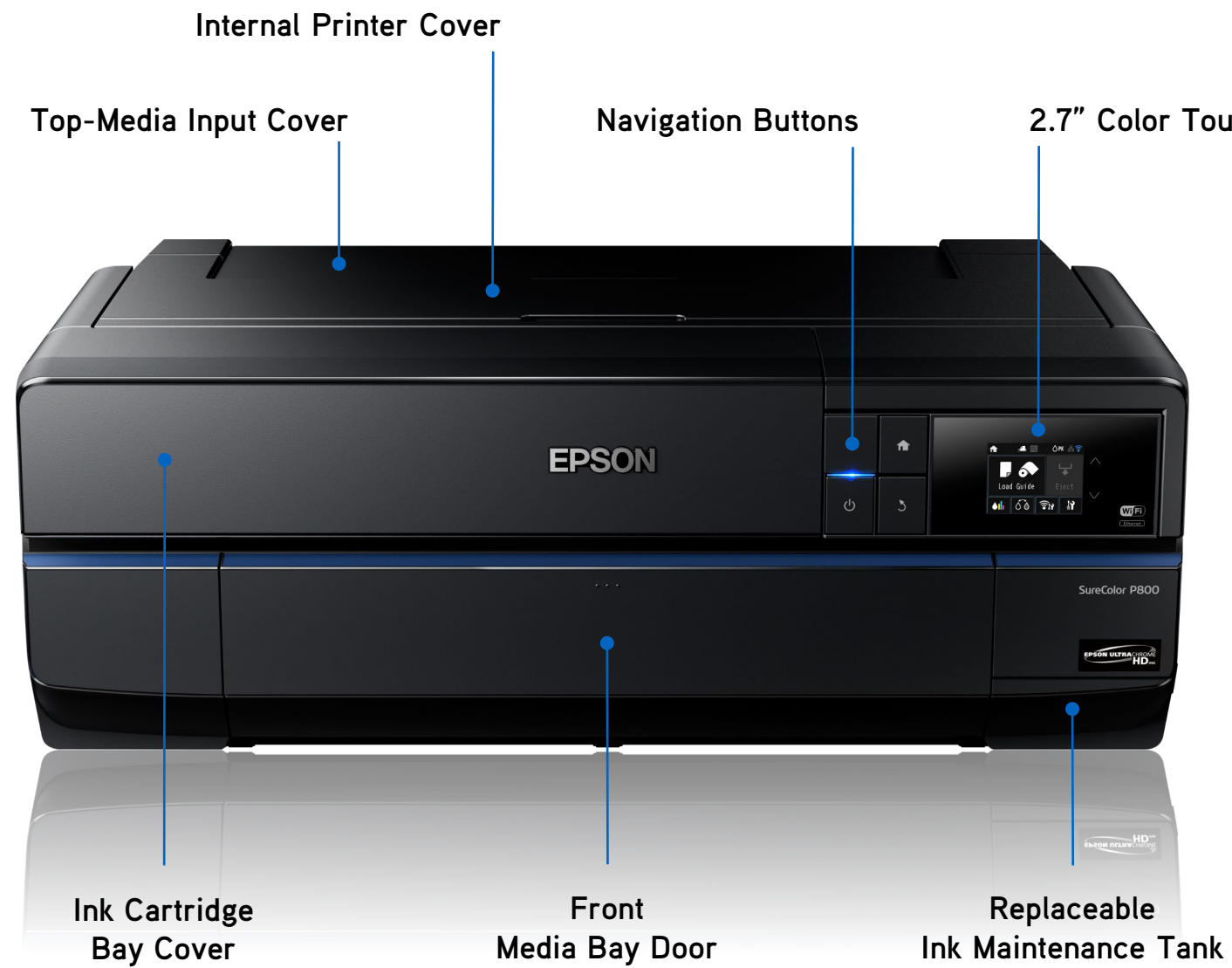
## ■ Refined Printer Design

- Compact desktop design with intuitive, 2.7" color touch screen interface.

## ■ Media Versatility

- For Fine art papers, photo papers, or canvas on sheets and even rolls up to 17" wide (rolls available with optional roll media adapter), print on the media best matching your creative vision

1. Ink lightfastness rating based on accelerated testing of prints on specialty media, displayed indoors, under glass. Actual print stability will vary according to media, printed image, display conditions, light intensity, humidity and atmospheric conditions. Epson does not guarantee longevity of prints. For maximum print life, display all prints under glass or lamination or properly store them. For details see: <http://www.wilhelm-research.com/>





**Nine 80 ml High-Capacity Replacement Ink Cartridges**

(nine 64 ml starter cartridges are included with the printer)



**Optional 17-Inch Roll Media Adapter  
2-Inch & 3-Inch Core Support**



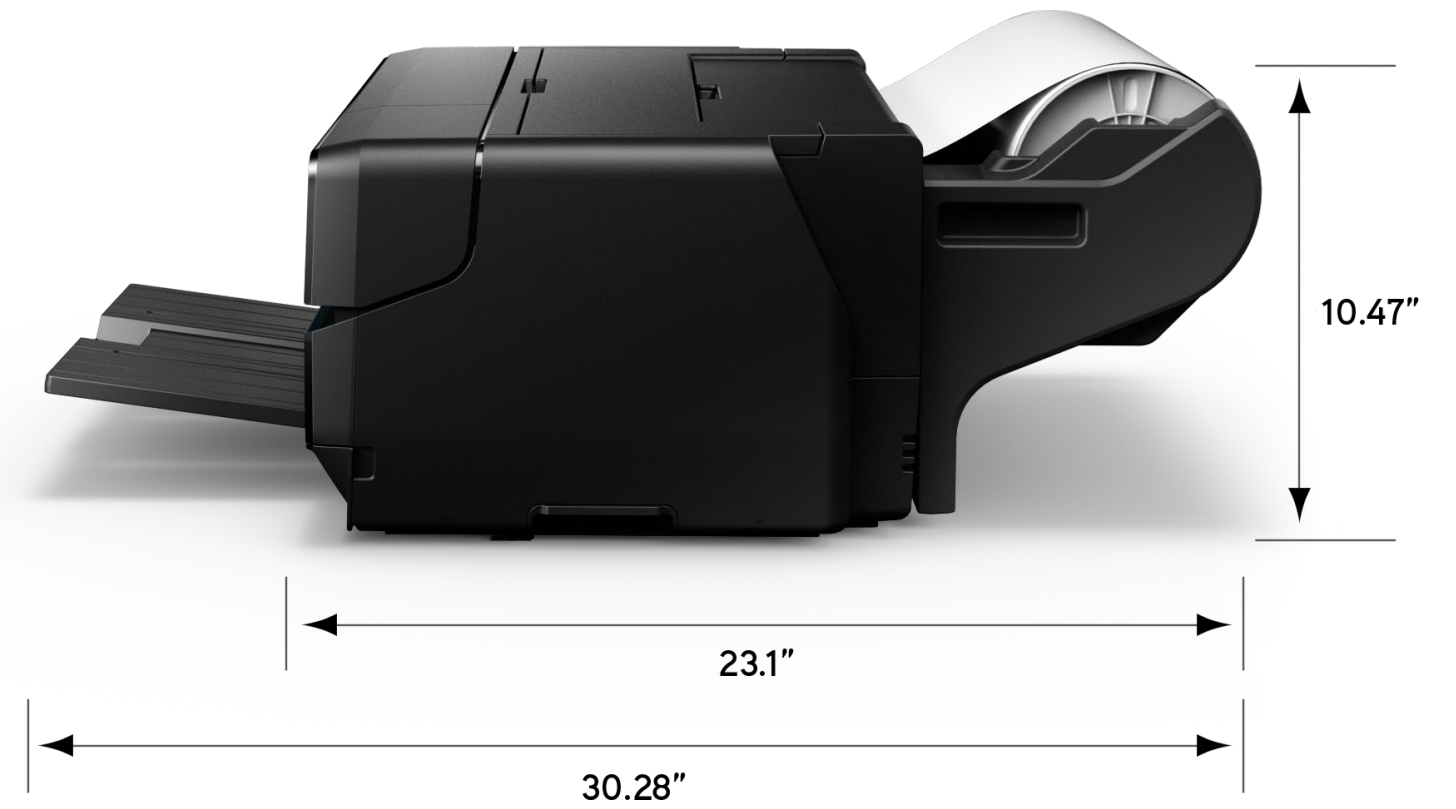
**Top Media Input**

Up to 17-inch width for standard design and photographic media

**Front Fine Art Media Input**

Up to 17-inch width for fine art and poster board up to 1.5 mm thick

**Media Exit Tray**



Printer Weight is 43 lb. | With Roll Option 49 lb.





- **Top-Loading Multi-Sheet Media Input**

- Supports most photographic and design media types up to 17-inch wide
- Maximum sheet capacity of 100

- **Single-Sheet Front Fine Art and Poster Board Media Input**

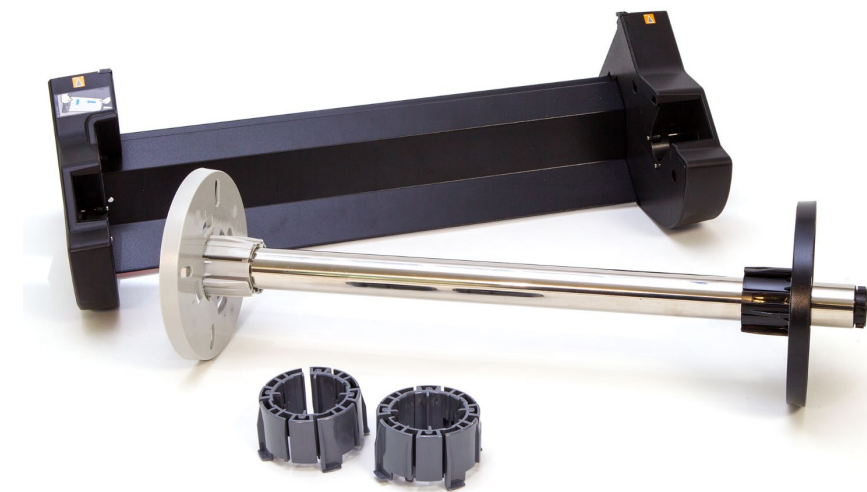
- Specialized feeder optimized for fine art and poster board media up to 1.5 mm thick

- **Border Free Printing for Many Popular Print Sizes**

- 4" x 6", 5" x 7", 8" x 10", 11" x 14", 16" x 20", 17" x 22", and many more

- **Optional Rear 17-Inch Roll Media Input**

- Ideal for printing on roll-based photographic and fine art media types
- Supports 13" wide and 2" core media; and 16", 17" wide 3" cores, up to 129" long
- No built-in cutter - manual cutting is required



**Optional 17-Inch Roll Media Adapter**

\$199.95 MSRP

- **Professional Roll Media Support up to 17-Inch Wide**

- Robust roll media feeding system designed for easy install
- Supports both 2-inch and 3-inch cored roll media
- No built-in cutter – manual cutting required
- Ideal for panoramic printing up to 10 feet long

- **Supports All Professional Roll Media Types**

- Photographic
- Graphic Arts
- Commercial Proofing
- Fine Art Canvas
- Fine Art Papers

**professional  
ink technology**



- **Next-Generation 8-Color Pigment Ink Technology**

- All new pigments for outstanding color performance
- Improved Resin Encapsulation Technology for exceptional gloss uniformity

- **Improved Black Density**

- Black pigments are 1.5 times denser than previous generation ink set
- Significant improvement to overall contrast ratio and optical clarity

- **Significant Print Permanence Improvements**

- Newest generation of yellow pigment technology for improved print permanence
- Up to twice the overall print permanence versus our previous generation ink set
- Print permanence ratings are available from Wilhelm Imaging Research, Inc.
- Visit [www.wilhelm-research.com](http://www.wilhelm-research.com) for the latest details

# photographic printhead technology



## ■ Unique Photographic Print Head Technology

- Precise piezo-based print head capable of 8-channels with 180 nozzles per inch
- Advanced Meniscus Control (AMC) for accurate variable dot shaping
- Ink repellent surface coating for reduced nozzle clogging

## ■ High Resolution Printing

- Capable of printing up to 2,880 x 1,440 dpi
- Supports variable sized droplet technology as small as 3.5 picoliter

## ■ Auto Black Ink Type Switching

- Capable of automatic Photo to Matte Black ink switching at the printhead
- Matte to Photo Black switching time is about 3:30 min:sec
- Photo to Matte Black switching time is about 2:30 min:sec

	<b>Bordered Print</b> 1440 x 720 dpi HS	<b>Bordered Print</b> 2880 x 1440 dpi HS	<b>Borderless Print</b> 1440 x 720 dpi HS	<b>Borderless Print</b> 2880 x 1440 dpi HS
<b>4" x 6"</b>	0:55	1:35	1:22	2:00
<b>5" x 7"</b>	1:08	1:58	1:27	2:28
<b>8" x 10"</b>	1:53	3:15	2:15	3:55
<b>11" x 14"</b>	3:09	5:30	3:40	6:39
<b>13" x 19"</b>	4:40	8:20	5:11	9:07
<b>16" x 20"</b>	5:48	10:08	N.A.	N.A.
<b>17" x 22"</b>	6:19	11:08	7:00	12:26
<b>17" x 120" Roll Panorama</b>	31:56	57:22	32:34	57:52

Print times are based upon start of paper movement from the sheet feeder through paper ejected into output tray unless specified as roll.

Test Images printed on Epson Ultra Premium Photo Paper Luster using a standard ICC color managed workflow via Adobe® Photoshop®

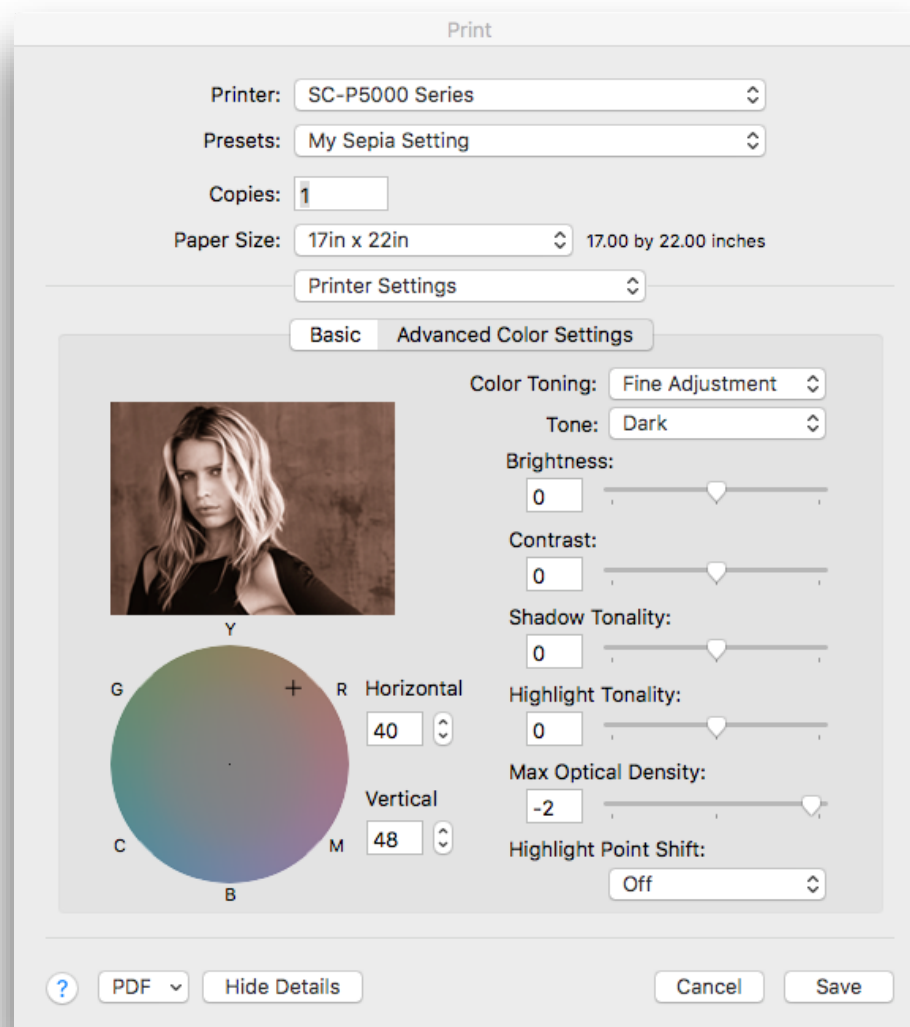
HS = High-Speed Mode (Bi-Directional Print Mode)

**Print speeds are shown in min:sec**

- **Standard USB 2.0 and 10/100 BaseT Ethernet**
  - The perfect choice for single or multiple user environments
- **Standard Wireless-N**
  - Allows for flexible printer placement when a direct connection is not available
  - Not intended for use with wireless-a or wireless-g devices
- **Support for Direct Printing from Smart Phones and Tablets**
  - Apple® AirPrint™
  - Google® Cloud Print™
  - Epson iPrint App - Available for Apple iOS and Android operating systems



Robust Connectivity Solutions



Advanced Black-and-White Driver Dialog  
Complete Control of Grayscale Toning

Apple macOS 10.12.2 screen capture shown

## ■ Professional Photographic Drivers

- Apple® macOS 10.13® - through MAC OS® X 10.7
- Microsoft® Windows® 10 - through Windows 7 (32-bit & 64-bit)

## ■ Unique EPSON Dot Screening

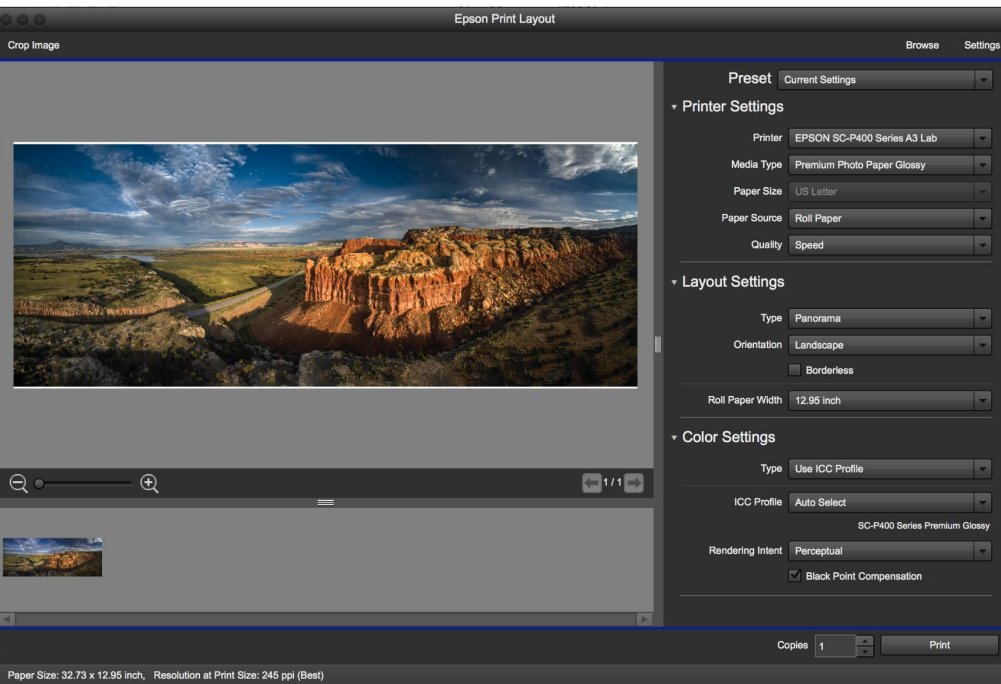
- Advanced algorithm to determine color mixing and variable dot size usage
- Fixed and three-level variable-sized droplet technology for outstanding print quality

## ■ Advanced Black-and-White Printing Technology

- Unique screening algorithm utilizes our three-level Black inks for producing professional black-and-white prints
- Some of the world's greatest black-and-white prints have been produced using this driver technology

## ■ High-Quality ICC Profiles

- Professional ICC profiles installed automatically with the driver
- Additional profiles offered as new media are introduced; can be easily added and used



## ■ Streamlines the Print Process

- Puts the application, operating system, and printer driver settings in a linear flow
- Choose printer settings, layout, and color settings from top to bottom, then print
- Works as a Adobe® Photoshop® plug-in or as a standalone application

## ■ Gallery Wrap

- Control stretcher bar width, frame size, and overprint
- Full wrap, mirror, soft focus, and solid color options built-in

## ■ Panorama

- Panorama layout auto-calculates the print length based on image and roll width

## ■ Advanced Black-and-White Photo Mode Preview

- Applies settings from the driver and displays them using the monitor profile
- Fine tune black-and-white images and realize their full potential

**Available for free download from [www.epson.com/epsonprintlayout](http://www.epson.com/epsonprintlayout)**



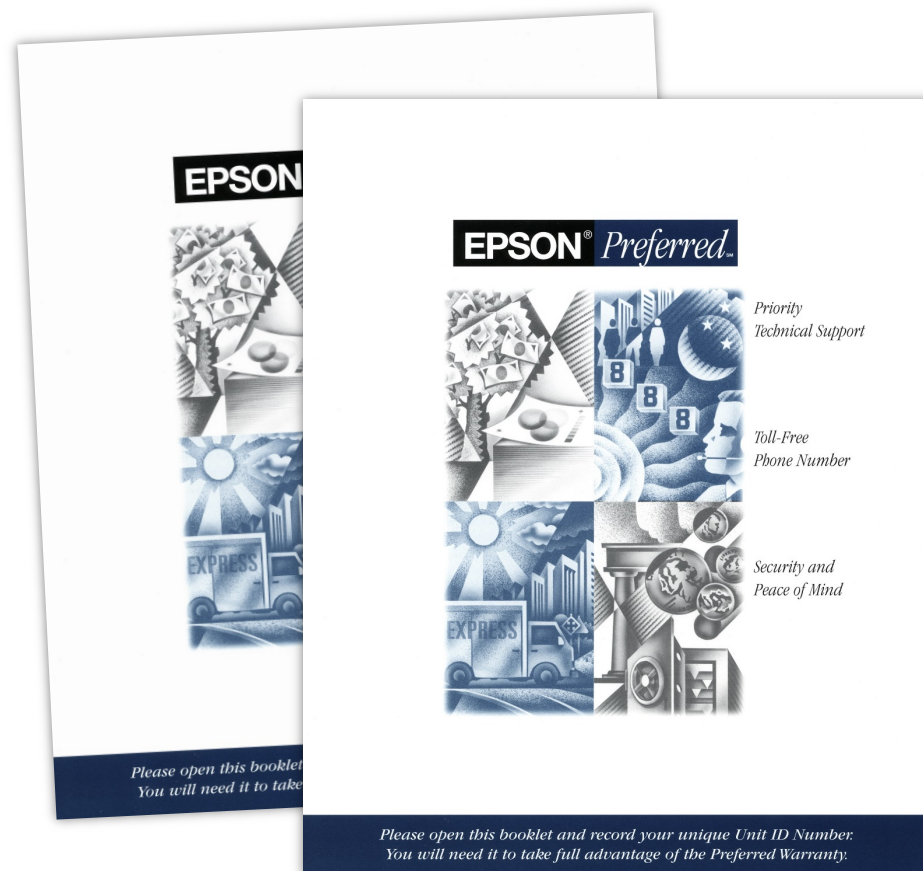
Feature Description	SureColor P800	SureColor P5000
Pigment Ink Type	8-Color UltraChrome® HD	10-Color UltraChrome HDX
Replacement Cartridge Fill Volume / MSRP	80 mL / \$59.95	200 mL / \$99.95
Ink Colors	Cyan, Vivid Magenta, Vivid Light Magenta, Cyan, Light Cyan, Yellow, Photo Black, Matte Black, Light Black, Light Light Black	Cyan, Vivid Magenta, Vivid Light Magenta, Cyan, Light Cyan, Yellow, Photo Black, Matte Black, Light Black, Orange, Green, Light Light Black or Violet
Advanced Black-and-White Print Mode	Yes – Requires Three-Level Black inks	Yes (Standard & Designer Editions), Not applicable on Commercial Edition
Percentage of PANTONE PLUS Spot Colors achieved	~94%	98% Standard & Designer / 99% Commercial Edition
Printhead Nozzles	MicroPiezo® AMC™, 180 nozzles per channel	PrecisionCore, 360 nozzles per channel
Production Printing Example: Quantity Ten, 16" x 20" prints centered on 17" x 22" sheets	1:35 (hours:min)	1:13 (hours:min) Auto-Nozzle Check = periodic
Roll Feed and Roll Cutting	Optional accessory, manual cutting	Standard - power driven, high-speed built-in rotary cutter
Four-sided Borderless on Sheet Media	Yes, 4" x 6", 5" x 7", 8" x 10" and popular sizes up to 17" x 22"	Not Available. 3 mm minimum margins all edges 8" x 10" minimum sheet size
Photo Media Input Sheet Capacity: Letter / 17" x 22"	80 / 10	100 / 100
Connectivity Options	USB, Wireless and Wired 10/100 Ethernet	USB, Wired Gigabit Ethernet
SpectroProofer 17" UVS	Not supported	Yes, an option which can be purchased and installed at anytime
Limited Warranty <sup>2</sup>	1-year advanced exchange	1-year, usually next-business-day on-site
Weight and Dimensions	43 l. 27" (W) x 15" (D) x 10" (H)	115 lb 34" (W) x 30" (D) x 16" (H) – Sturdy production printer engine

- **Standard 1-Year Epson Preferred<sup>SM</sup> Service<sup>2</sup>**

- Free technical support Monday thru Friday
- If required, free full unit replacement - includes free shipping
- Covers the printer, genuine Epson optional accessories, and software

- **Optional 1- or 2-Year Epson Preferred Plus Service Extensions**

- Extends same Epson coverage when the standard in-box warranty ends
- Can be purchased at any time while still under an Epson Preferred Service Program
- Provides up to 3-years of complete coverage from Epson



2. For details on the SureColor P800 Limited Warranty see the full document in Manuals and Warranty section of [www.epson.com/support/p800](http://www.epson.com/support/p800)



**Epson SureColor P800**

The Perfect Desktop Photographic Printer

- **Class-Leading Print Quality**

- The benchmark standard for photographic imaging excellence

- **Superior Print Permanence**

- Epson UltraChrome HD ink technology dramatically improves print permanence

- **Media Flexibility**

- Compatible with multiple media types and formats - up to 17-inch wide on sheets or rolls

- **Printer Versatility**

- Compact desktop design with robust connectivity options including Ethernet and WIFI

- **Industry Support**

- Significant third-party training, ICC profiles, forums, software, and after-market product support available



Specifications are subject to change without notice.

1. Ink lightfastness rating based on accelerated testing of prints on specialty media, displayed indoors, under glass. Actual print stability will vary according to media, printed image, display conditions, light intensity, humidity and atmospheric conditions. Epson does not guarantee longevity of prints. For maximum print life, display all prints under glass or lamination or properly store them.

**For details see: <http://www.wilhelm-research.com/>**

2. For details on the SureColor P800 Limited Warranty see the full document in Manuals and Warranty section of [www.epson.com/support/p800](http://www.epson.com/support/p800)

AMC, Epson, Epson iPrint, Epson Stylus, UltraChrome, and SureColor are trademarks or registered trademarks,

Epson Preferred is a service mark, and EPSON Exceed Your Vision is a registered logo mark of Seiko Epson Corp.

Adobe and Photoshop are either registered trademarks or trademarks of Adobe Systems Incorporated in the United States and/or other countries.

Apple, iOS, and Apple AirPrint are either registered trademarks or trademarks of Apple in the United States and/or other countries.

Google and Google Cloud Print are either registered trademarks or trademarks of Google Inc., in the United States and/or other countries.

All other product brand names are trademarks and/or registered trademarks of their respective companies.

Epson disclaims any and all rights to these trademarks.

© Epson America, Inc. 2019 RH Dec 2019