

# Mister-T1 Instruction Manual

Please read this manual before using the machine.

Please keep this manual within easy reach for quick reference.

Automatic Pretreat Spraying Machine

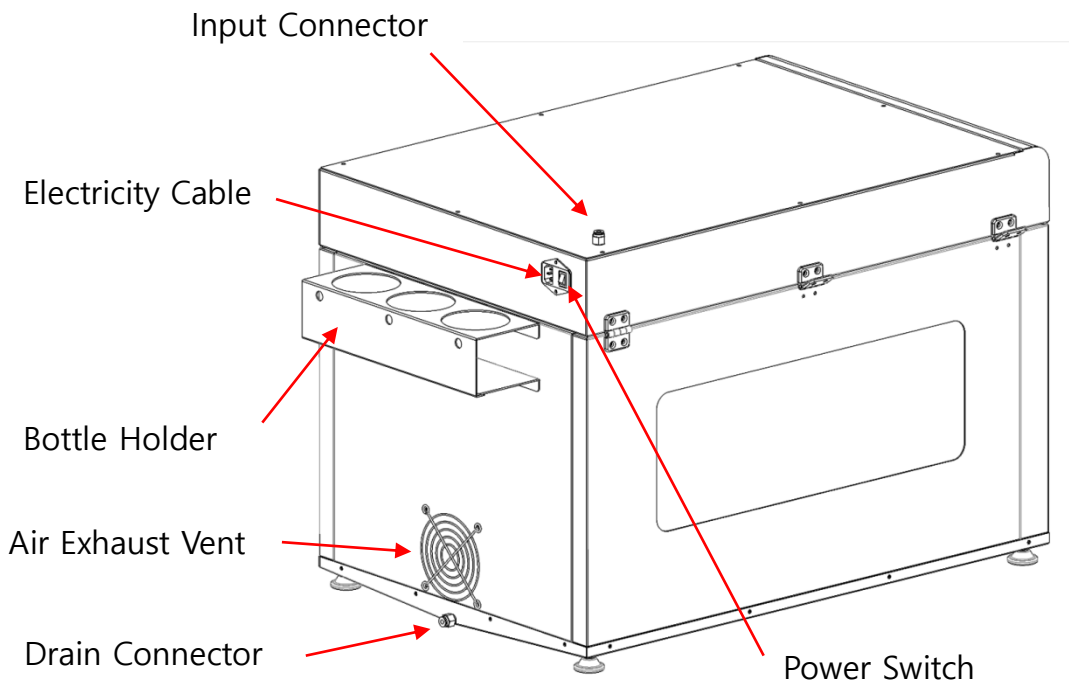
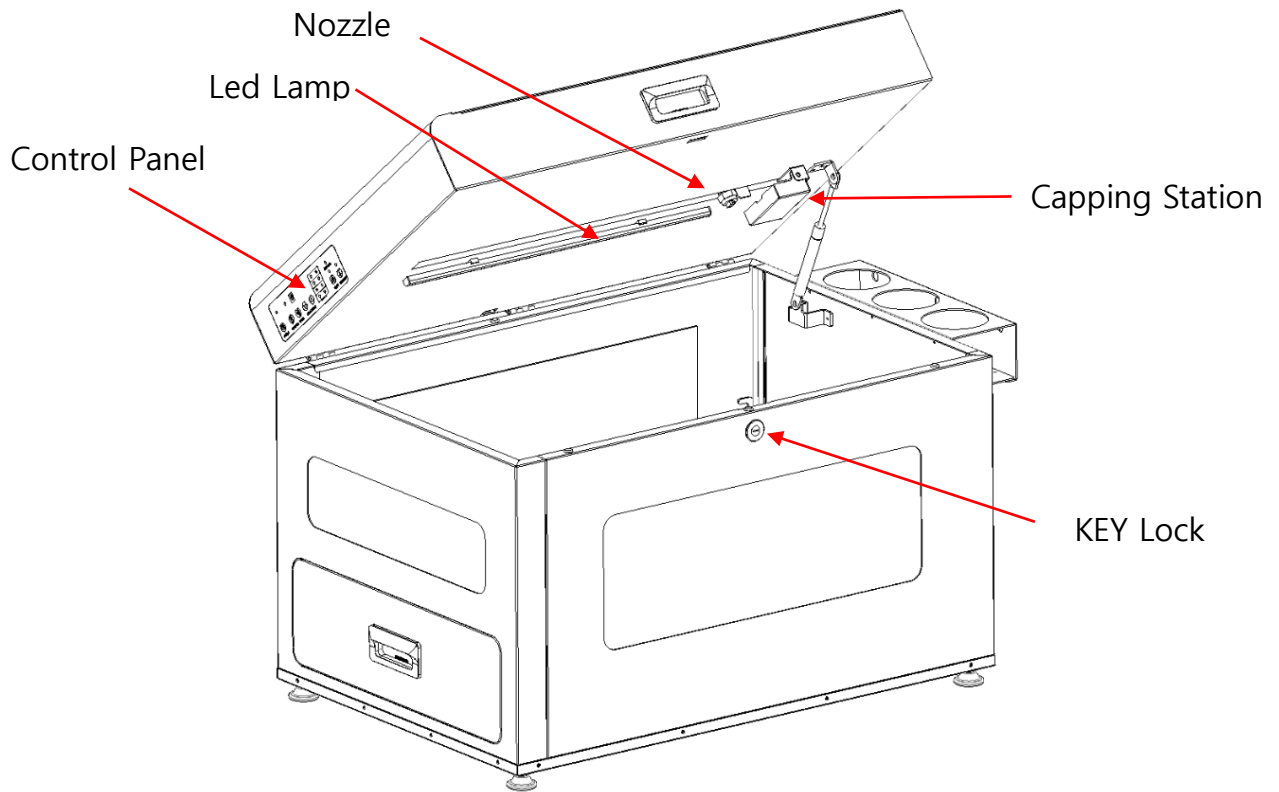


## Contents

1. Introduction of Mister-T1
  - Structures
  - Specifications
  - Circuit Diagram
  - Warranty Terms and conditions
  - Safety Arrangement
  - Understanding Control Panel Menus
  - Operation
  
2. Installations
  
3. Basic Operation
  - Process
  
4. Maintenance
  - Cleaning the nozzles
  
5. Trouble Shooting

# 1. Introduction of Mister-T1

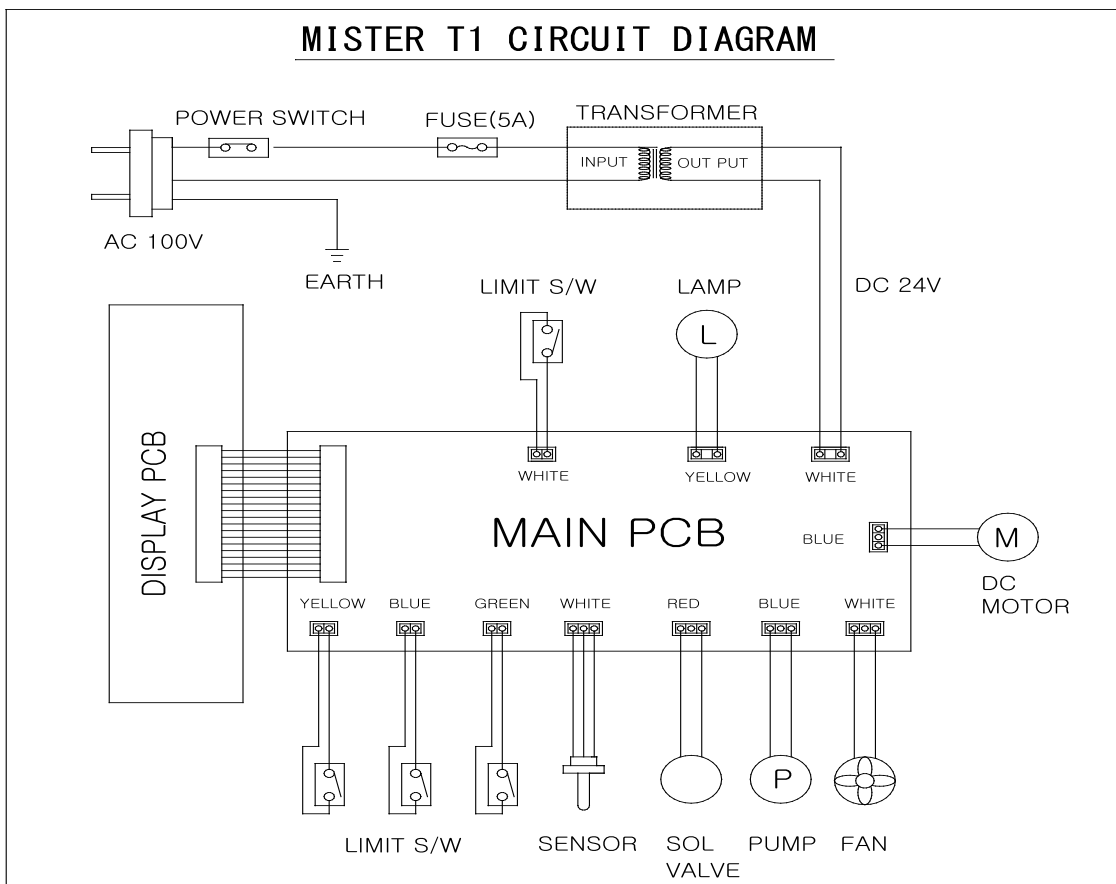
- Structures



● Specifications

Dimensions	560mm(W) * 800mm(L) * 590mm(H)
Weight	35 Kgs
Platen	40cm * 50cm (16" * 20")
Number of Spray Nozzle	Single Nozzle
Maximum Spray Area	40cm * 50cm (16" * 20")
Spray Cycle Time	3 sec ~ 9 sec, by 1 to 5 speed
Power Supply	Free Voltage (100V ~ 240V 50/60 Hz)
Power Consumption	60W
Packing Size	600mm(W) * 900mm(L) * 690mm(H)
Packing Weight	40 Kgs
Liquid Consumption	With Minimum Speed : about 20ml
	With Maximum Speed : about 10ml

● Circuit Diagram



## ● Warranty Terms and Conditions

Mister-T1 has to be operated with a precoating liquid for fabrics for DTG printer. Cleaning MUST be done with distilled water only! Other liquids alcohol or solvent may damage pumps or other components of the machine. Damages caused by unauthorized liquids are excluded from the warranty.

Mister-T1 comes with 12months warranty. This warranty includes the whole construction of the machine, mechanical parts, electronics, drawer with rails, casing, pumps, electronic valve and pipes. Consumption items such as stainless steel nozzles, seals and filters are excluded from the warranty.

## ● Safety arrangements at the workplace

-Set up and installation of the machine

The set-up and installation of the machine has to be done under supervision of an authorized person. The installation has to be done by 2 or more persons following the instructions of this manual.

-Information and Education

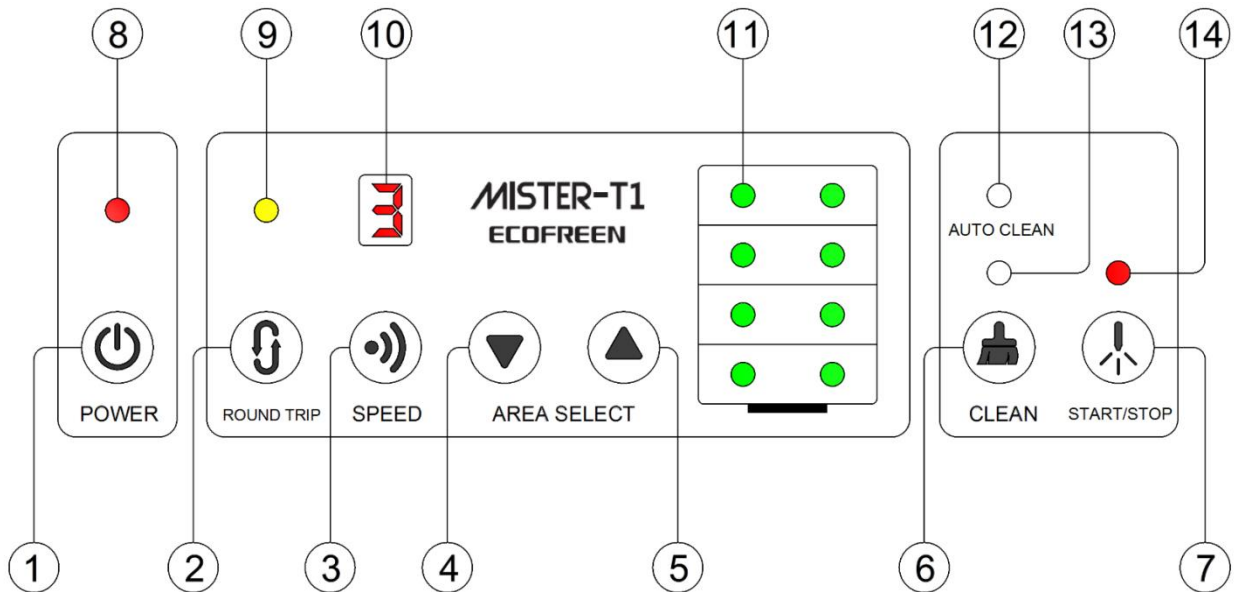
According to industrial relation law and employment protection law, the employer has to make arrangement to give all information about the function and the range of application to the user. In particular the user needs to be acquainted with complete manual and be explicitly informed of the danger of working with the machine.

-Safety Instruction

The machine should only be used by trained personal after reading and understanding of the manual.

Caution: The Plug has to be pulled out of the power outlet while maintenance.

● Understanding Control Panel Menu



1) POWER ON/OFF BUTTON

2) ROUND TRIP BUTTON : Spray pre-coating liquid back and forth when lights are lid.

3) SPEED BUTTON : 1~5 STEP (1: SPEED LOW / 5: SPEED HIGH)

4) AREA SELECT BUTTON : Selects spray area from top to bottom

5) AREA DESELECT BUTTON : Deselect spray area from bottom to top.

6) NOZZLE CLEANING BUTTON

7) START / STOP BUTTON : Spray pre-coating liquid / Stop spray

8) POWER LAMP

9) ROUND TRIP LAMP : Lights are lid when ROUND TRIP mode is running

10) SPEED STEP LAMP

( Display speed level when normal / Display "D" when door is opened / Display "E" when sensor malfunction )

11) AREA SELECT LAMP : Spray pre-coating liquid on area where the LAMP is lid (좌/우 동시 동작)

12) AUTO CLEAN LAMP : Automatic spray for 1 second in every 4 hours when power is off

13) MANUAL CLEAN LAMP : Spray when light is lid

14) START / STOP LAMP : Spraying when light is lid

● Operation

1) Turn on the POWER SWITCH on the back of the machine

2) Press POWER BUTTON on control panel to start the machine

(Press and hold for few seconds)

3) Press ROUND TRIP BUTTON to spray back and forth to check the machine is functional properly.

■ Spray back and forth when light is lid



POWER



ROUND TRIP

4) SELECT SPRAY SPEED : Change spray speed

■ There are 1 ~ 5 Speed level

Level 1 is nozzle moving slow to apply more liquid on the surface.

And nozzle moves faster to apply less liquid when speed levels are higher



SPEED

5) AREA SELECT BUTTON selects spray area

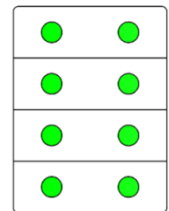
■ Spray area is divided into 4 sections and only sprays on the selected area

■ AREA SELECT BUTTON ▼ to select area from top to bottom and AREA DESELECT BUTTON ▲ to deselect area from bottom to top.

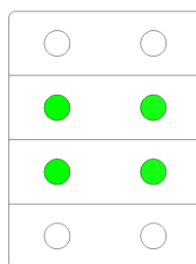
■ For example, if you select speed level on 3 and select only center area to be sprayed



AREA SELECT



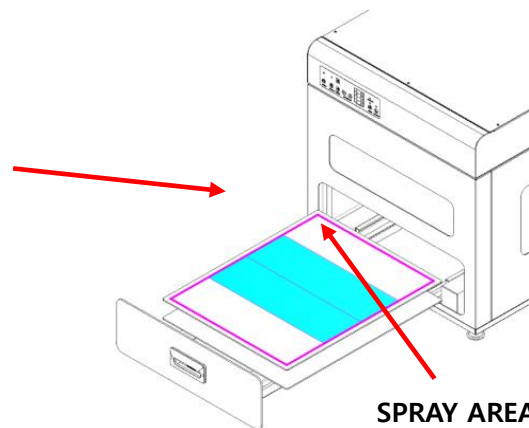
**MISTER-T1**  
**ECOFREEN**



SPEED



AREA SELECT



6) BOTTLE SELECT

You can change the liquid by choosing the bottle.

You are recommended to set the "bottle #3" with WATER ( for cleaning nozzle )



7) Cleaning

When you change the bottle to another (to different liquid), please press NOZZLE CLEANING BUTTON.



**\*\*WARNING\*\***

**IF YOU USE MULTIPLE COATING LIQUIDS,**

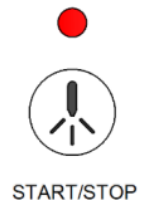
**IT CAN CAUSE CHEMICAL REACTION WHICH CAN BE THE REASON OF NOZZLE CLOGGING**

**Please clean with bottle #3 (water) in order to flush the tubes inside of machine when you switch to another liquid.**

8) START / STOP.

Press the button to START the spray.

Also press button again to STOP when needed



**※ Reference**

After Cleaning the Nozzle, the tubes are still filled with cleaning solution or water, Therefore, PRESS CLEAN BUTTON for seconds to fill up the liquids after changing tubes from water bottle to PT liquids bottle and CHECK if actual PT liquids are sprayed from nozzle.

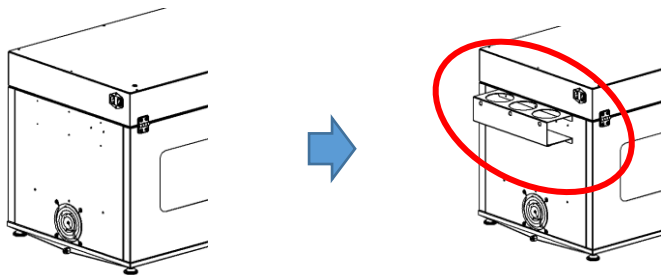


## 2. Installations

- A. Machine Leveling : Please ensure the machine is properly placed and leveled. Otherwise, waste liquid in the machine can be leaked out.



- B. Assemble : Bottle Holder is located in the box located inside of Machine. Please open top and find the bottle holder in the machine and assemble it behind of machine.

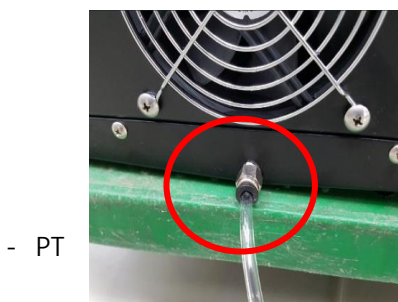


### Connecting

- Power Cord



- Waste Liquid Bottle





### 3. Basic Operation

- Recommended Spray Volume and Fixation Temperature.

1. Please prepare all equipment to be turned on.
2. Loading the T-shirts
3. Pre-treating and Fixation.

WHITE / Bright :Apply about 15~20 grams and press it with 320F~340F(160C~170C), 35~45sec.

BLACK / Dark : Apply about 35~40 grams and press it with 320F~340F(160C~170C), 60~70sec.

\*\* Always place a heat-resistant release sheet, such as Teflon sheet between T-shirt and the heat press

4. Printing
5. Post-treating the T-shirt. ( Heat Fixation on the T-shirt)

WHITE / Bright : 320F~340F(160C~170C), 45~55 sec

BLACK / Dark : 320F~340F(160C~170C), 90~100 sec.

## Textile Pigment Guide Book

(Mandatory Temperature 18 °C - 30 °C / Humidity 45% - 85%)

### Pretreatment Quantity on T-Shirts

<b>Dark Shirt</b> 35 g	<b>Medium Shirt</b> 24-27 g	<b>Light Shirt</b> 17 g
---------------------------	--------------------------------	----------------------------

### Heat Press Setting for Pretreatment

**Dark Pretreatment**

<b>70 seconds</b>	<b>170 °C</b> 338 °F	<b>4,0 - 5,0 Bars</b> 58 - 72 PSI
-------------------	-------------------------	--------------------------------------

**Bright Pretreatment**

<b>45 seconds</b>	<b>170 °C</b> 338 °F	<b>2,0 - 3,5 Bars</b> 29 - 51 PSI
-------------------	-------------------------	--------------------------------------

### Ink Heat Press Curing Setting

**CMYK Curing Heat Press**

<b>55 seconds</b>	<b>170 °C</b> 338 °F	<b>0,8 - 1,8 Bars</b> 12 - 26 PSI
-------------------	-------------------------	--------------------------------------

**W Curing Heat Press**

<b>100 seconds</b>	<b>170 °C</b> 338 °F	<b>1,7 - 2,4 Bars</b> 25 - 35 PSI
--------------------	-------------------------	--------------------------------------

**ECOFREEN**

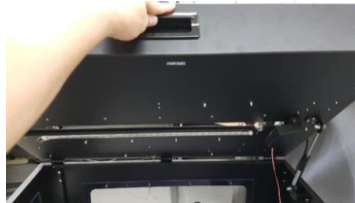
**ECOFREEN CO.,LTD**  
701, Smile Tower, 99, Anyangpangyo-ro, Uiwang-si, Gyeonggi-do, 16001, Korea  
www.ecofreen.com / [ecofreen@ecofreen.com](mailto:ecofreen@ecofreen.com)  
All brand names & trademarks are property of their respective owners

#### 4. Maintenance

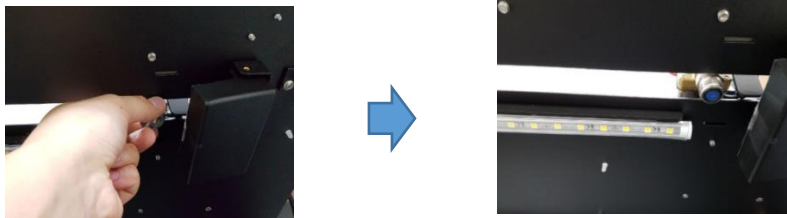
- Cleaning the Nozzles

**Step 1** Press POWER ON/OFF BUTTON on the Control Panel to switch off

**Step 2** Open top cover



**Step 3** Turn the Nozzle Cap Nut to anti-clockwise to loosen and dislocate the nozzle



**Step 4** Clean the Nozzle Tip, Cap Nut and Sol VALVE using water and wet paper tower



※ **Reference**

The nozzle can be cleaned in an ultrasonic cleaner.

To clean the nozzle and its parts, please fill distilled water and run it for 6~7 min.

※ **Storage**

**Never leave the nozzles exposed to air. Remaining precoat can be dried and stick to nozzles and this will**



Picture: Ultrasonic Cleaner

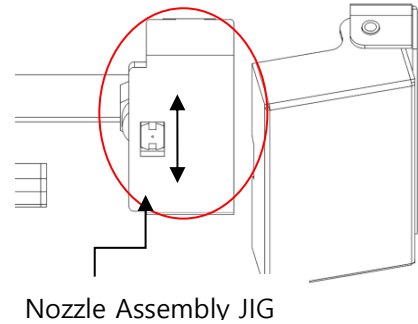
**Step 5** Assemble the Nozzle Tip back to Sol VALVE and close top cover

※ **CAUTION** ※

**When Assembling Nozzle Tip**

After dislocate and clean the nozzle,

Use Nozzle Assembly JIG to properly set the nozzle tip.



## 5. Troubles Shooting

No.	Problem	Possible Reason	Solution
1	-Streaking on the shirts after coating -Irregular Spraying	The nozzles are clogged	1. Clean the nozzles ( Refer to Chapter4 Maintenance ) 2. Replace with new nozzle
2	The Pump generates no pressure or the spraying is too weak	-Electronic valve or nozzle is clogged. -The pump is dirty -The pump is faulty	1. Check the nozzle for pollution and clean 2. Flush the pump with distilled water 3. Replace with new pump
3	Platen doesn't move.	-Rails are sticky from pre-coating, dirty or worn out	1. Clean the rails. 2. Replace the rails.
4	The control panel doesn't respond to commands. No function possible.	-The cover top is opened -A loose contact on the cable between the display and the electronics -Display failure	1. Please check the sensor located in the hinge of top. 2. Check the cable connection between electronics and the display. 3. Replace display 4. Turn the machine off and turn it on again
5	Power can't be turned on.	-Power cable is disconnected -Power switch behind of machine is turned off.	1. Please make sure the cables are connected. ( Please don't touch with wet hands) 2. Turn on the power switch first.
6	Leaking	-Machine isn't well levelled	Please adjust of machine levelling. Recommended to place front side to be higher position.
7	Humidity inside	-Fan behind of machine stopped -Fan is defective	-Please switch on the machine and let the fan run -Replace the fan
8	Waste liquids are not drained	-Drain Connector is blocked -Drain tubes are bended	-Check the drain connector -Drain tubes are to be positioned in lower place.

\*\* If other than the above problem occurs, please contact the seller or manufacturer.