

## Cleaning of print head circumference

### Cleaning period:

- Weekly
- When print blurring and dot missing remain after head cleaning is done.

### Preparation:

Cleaning stick

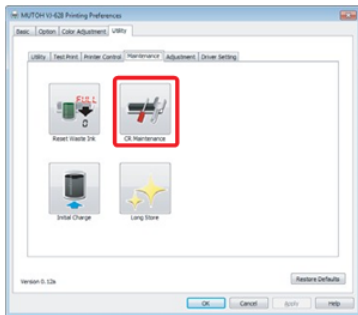


During cleaning, please note the followings.

- Use a cleaning stick in dry condition. If moisten with water or solution, it can cause damage to the print head.
- Do not touch the tip of a cleaning stick with fingers. If sebum is adhered, it can cause damage to the print head.
- Do not reuse a cleaning stick. Dusts can adhere causing damage to the print head.
- Standard cleaning time should be within 5 minutes. If it takes longer, the stick can dry causing damage to the print head.

### Steps

[1]



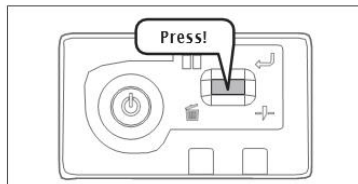
Launch MSM and Click [CR Maintenance].

- The MSM remote panel opens.

[2] Click [Start].



[3]

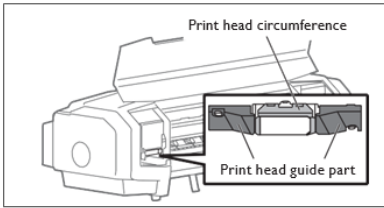


Short press the operation key on the operation panel.

- The carriage moves to the maintenance position inside the front cover.

[4] Open the front cover.

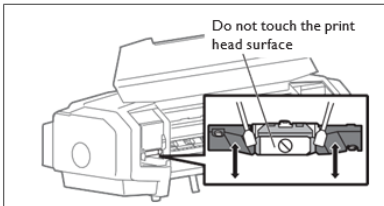
[5]



Look at the bottom side of the carriage and check if dusts and ink lump are adhered.

- Print head circumference (silver metal part)
- Print head guide part (black plastic part)

[6]



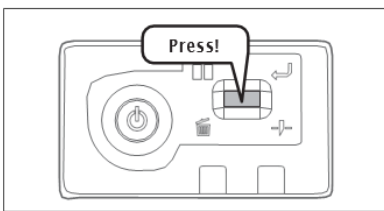
If dusts or ink lump are adhered, clean with a cleaning stick.

**Important!**

- Do not touch the print head surface with fingers or a cleaning stick. It can cause damage to the print head.
- Do not touch the platen or media guide. The temperature may be high.

[7] Close the front cover.

[8]



Short press the operation key on the operation panel.

- The carriage returns to the original position inside the front cover.