

DTG/WB/PLASTISOL INFRARED DRYERS

BigRed 4-D SERIES

**15 YEAR
HEATER WARRANTY**



BR4D-V30S



BR4D-V54S

- Focused exhaust system to remove fumes/moisture within chamber
- Excellent air flow to cool the skin of the dryer
- Dual zone heat control, four powerful infrared elements, and makeup air make it great for inkjet curing!
- Filtered exhaust with fault detection
- Standard side heaters provide even heat across the full width of the heating elements
- 54" wide dryer can cure 3 rows of garments with side heaters (12" image with 16" centers)

CE CERTIFIED
BY CERTIFICATION EXPERTS
THE NETHERLANDS

Standard Wattage	14,200w	25,600w
Belt Width x Length	30" x 8¾' (76.2 x 267cm)	54" x 8¾' (137.2 x 267cm)
Chamber (tunnel) Length	4.5' (137.2cm)	4.5' (137.2cm)
CURE TIMES		
	1 Row	3 Rows 2 Rows
Plastisol @ 25 secs.**	475+/hr	1,425+/hr 950+/hr
Water Based/Discharge @ 50 secs. **	216+/hr	648+/hr 432+/hr
Digital White Ink @ 3 min. **	60/hr	180/hr 120/hr
Digital White Ink @ 8 min. **	24/hr	60/hr 48/h

BR4D-V30S

BR4D-V54S*

Features

- ACCURATE** Two temperature controllers are accurate to +/-1 degree F. Digital PID with Fuzzy logic is the most advanced in the industry.
- SMART** Unique cooling bed at exit, speeds up garment cooling. Cool Down Mode for easier shut down.
- ADJUSTABLE** 4" - 7" (10.2 - 17.7 cm) belt-to-heater height adjustment
- CONVENIENT** Digital belt speed voltmeter, a must have!
- VERSATILE** Make-up Air and Negative Exhaust Air, removes moisture and fumes fast.
- FILTERED** Filtered air intake provides clean curing air, no recycled fumes!
- HEAVY DUTY** "X-Series" Conveyor Belt Tracking System w/HD drive.
- EXPANDABLE** Add heat chambers and belt extensions. (rear idler required over 17' long)
- CONSISTENT** Side heaters allow for even curing across entire width of heating element

Options

- Add heat chambers @ 4.5' (137cm) long.
- Belt extensions, front or rear, 18" (46 cm) increments
- 3-Phase, 208, 380, 480 voltages available
- Conveyor Air Bar
- Exhaust Hood, provides extra fume extraction
- Locking casters for easy mobility
- Donut Probe

* All BigRed V54 Dryers come standard in Three Phase wiring.
** Production speeds are estimates are based on 16" centers and will vary depending on ink manufacturer, humidity of shop, and other variables.



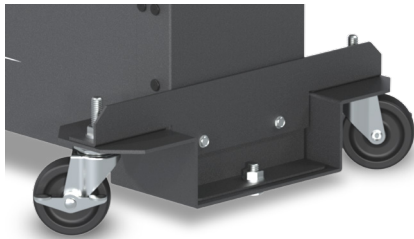
INFRARED DRYER ACCESSORIES



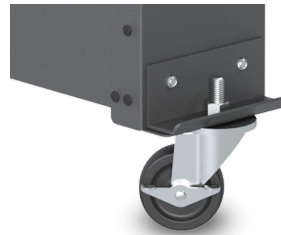
SI-27
Stand for D-100



**SI-27 W/
SI-27-DEMT**
Stand for D-1000

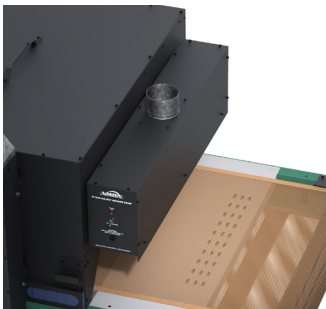


WS-EDD
Drop Down Wheel Set for
DB, LR & EC-I Dryers



WS-EC
Standard Wheel Set for
all non-tabletop Dryers

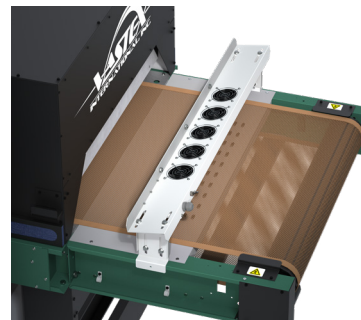
WS-EHD
Drop Down Wheel Set for
EC-II, ER & BR Dryers



EXHAUST HOOD

FEATURES

- Removes fumes at exit the dryer
- EXH-30 fits 30" (76cm) wide belts
- EXH-54 fits 54" (137cm) wide belts
- Available in 120v or 240v



CONVEYOR AIR BAR

FEATURES

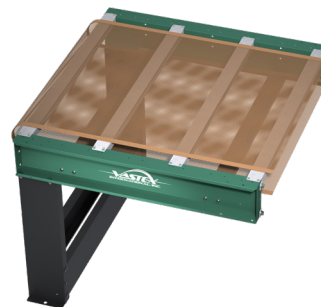
- Cools ink as garments exit the dryer
- CAB-30 fits 30" (76cm) wide belts
- CAB-54 fits 54" (137cm) wide belts
- Work on many non-Vastex dryers
- Available in 120v or 240v



HAT SUPPORT RAIL

FEATURES

- Angles hats so front is parallel with heaters
- HR-1 fits EconoRed II dryers
- HR-2 fits EconoRed III & BigRed Dryers



CONVEYOR EXTENSIONS

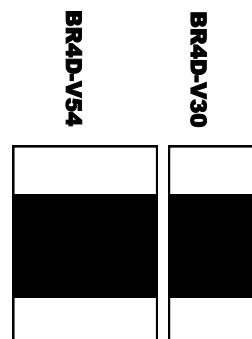
Extend your conveyor in
18" (46cm), 36" (92cm) and
54" (137cm) increments



BigRed 4-D (Digital Series) Technical Specifications

CE	BR4D-V30S	BR4D-V54S
Heater Warranty	15 Year	15 Year
Defect Warranty	3 Year	3 Year
Shirts / Hr* - (Plastisol) (Waterbased/Discharge)	475+ @ 25 secs. 216+ @ 50 secs.	950+ @ 25 secs. 432+ @ 50 secs.
Shirts/hr* - DTG/digital	72 @ 2.5 min, 60 @ 3 min. 30 @ 6 min.	144 @ 2.5 min, 120 @ 3 min. 60 @ 6 min.
Time in Tunnel Range (mm:ss)	00:12 - 01:45	00:12 - 01:45
Belt Speed	1.8 - 23.6 FPM (0.6 - 7.2 MPM)	1.8 - 23.6 FPM (0.6 - 7.2 MPM)
Exhaust (Free Air)	500 CFM (14.2 CMM)	700 CFM (19.8 CMM)
Exhaust Stack Diameter	6" (15.24 cm)	8" (20.32 cm)
Overall Length	105" (267 cm)	105" (267 cm)
Overall Width	47.3" (120.2 cm)	71.4" (181.4 cm)
Overall Height	51.6" (131.1 cm)	51.6" (131.1 cm)
Belt Width	30" (76 cm)	54" (137 cm)
Chamber Length	54" (137cm)	54" (137 cm)
Chamber Infeed Width	34.5" (88 cm)	58.5" (149 cm)
Chamber Infeed Height (adjustable)	2" - 7" (5 - 17.7 cm)	2" - 7" (5 - 17.7 cm)
Heat Range (@ Heater)	0-900F° (0-482C°) @ 240V 0-1150F° (621C°) - booster	0-900F° (0-482C°) @ 240V 0-1150F° (621C°) - booster
Heater Size & Standard Wattage	4 @ 12" x 24" (30 x 61 cm) Zone 1 @ 3,600 Watts Zone 2 @ 7,800 Watts Side Heaters 2 @ 3" x 47" (7.6 x 120 cm) 1,400 watts per side 14,200 Watts Total	4 @ 12" x 48" (30 x 122 cm) Zone 1 @ 7,200 Watts Zone 2 @ 15,600, Watts Side Heaters 2 @ 3" x 47" (7.6 x 120 cm) 1,400 watts per side 25,600 Watts Total
Cost / hour to operate based on 10 cents / kwh	\$1.42 @ 240V	\$2.56 @ 240V
Electrical Specs** Chamber	240V / 63A / 1 Ph. / 3 wire 50/60HZ	240V / 70A / 3 Ph. / 4 wire 50/60HZ
Electrical Connection	<p>All amps shown are FLA (Full Load Amps), not recommended line size! Dryers on this page must be hard wired to the power terminal provided.</p> <p>A licensed electrician must be consulted and should refer to articles, 210.20(a), 215.3 and 310 of the NEC code.</p>	
Optional Chamber Power Also available in 380 / 440 / 480	240V / 44A / 3 Ph. / 4 wire 50/60HZ 380V/ 22A / 3 Ph. / 5 wire / 50/60HZ	240V / 110A / 1 Ph. / 3 wire 50/60HZ 380V/ 49A / 3 Ph. / 5 wire / 50/60HZ
Shipping Weight*	1,018 lbs (462 kg)	1,438 lbs (653 kg)
Shipping Dimensions*	72" x 61" x 63" (183 x 155 x 160 cm)	92" x 65" x 63" (234 x 161 x 160 cm)

Dryer foot print comparison chart, shown to scale



1 in = 2.54 cm
1 lb = 0.454 kg

*All shipping weights and dimensions are for continental US shipping only. Call for other shipping specifications. Ex-works from Bethlehem, PA.