



TRAVELMATE™

OWNER OPERATIONAL MANUAL



Serial Number: _____

Date of Purchase: _____

TABLE OF CONTENTS

Safety First	3
Location of Controls	4
Identification of Parts	4
Attaching the Battery to Your Amigo	4
Folding/Unfolding Your Amigo	5
Operating Your Amigo	6
Driving Your Amigo	6-7
Traveling With Your Amigo	7
Safety Warnings	7
Battery Information & Charging Instructions	8-9
Cleaning Instructions	10
Maintenance	10-11
Troubleshooting/Diagnostic Codes	12
Electromagnetic Interference	13
Exploded View	14
Parts List	15
Wiring Diagram	16
Warranty	17



Since Amigo Mobility Founder Al Thieme invented the first power-operated vehicle (POV) in 1968 for a family member with multiple sclerosis, we have been committed to *Improving Lives Through Mobility*®. With more than 45 years of mobility expertise, our goal is to bring comfort, freedom and satisfaction to people with mobility challenges.

For safe driving, please read this manual carefully before using your Amigo. You will also find helpful hints and tips to help you stay as active as ever.

Thank you for choosing the Amigo TravelMate – we hope you enjoy many adventures together!

Sincerely,

Amigo Mobility International, Inc. (AMI)

Welcome to our growing family of Amigo owners – we hope you are excited to be part of it!

Please return your warranty card to sign up to receive our Friendly Wheels e-newsletter. The monthly newsletter features mobility news, inspiring stories and accessible travel tips, written especially for Amigo owners! It will also keep you informed about new products, accessories, helpful hints and service tips.



Improving Lives Through Mobility®
Since 1968

AMI is not responsible for any damage or injury incurred due to the improper or unsafe use of the POV. AMI specifically disclaims responsibility for any bodily injury or property damage that may occur during any use, which does not comply with applicable federal, state or local laws or ordinances.

SAFETY FIRST

For your convenience and understanding, signal words are defined below:



WARNING

WARNING IS USED TO INDICATE THE PRESENCE OF A HAZARD, WHICH CAN CAUSE SEVERE PERSONAL INJURY, DEATH OR SUBSTANTIAL PROPERTY DAMAGE IF THE WARNING IS IGNORED



CAUTION

CAUTION IS USED TO INDICATE THE PRESENCE OF A HAZARD WHICH WILL OR CAN CAUSE MINOR PERSONAL INJURY OR PROPERTY DAMAGE IF THE WARNING IS IGNORED

Safety Guidelines

Use the following guidelines for the safe operation and use of your Amigo. Should you have any questions about the safe operation of your vehicle, please contact AMI. If you are in doubt about your ability to operate your Amigo, consult your personal physician.

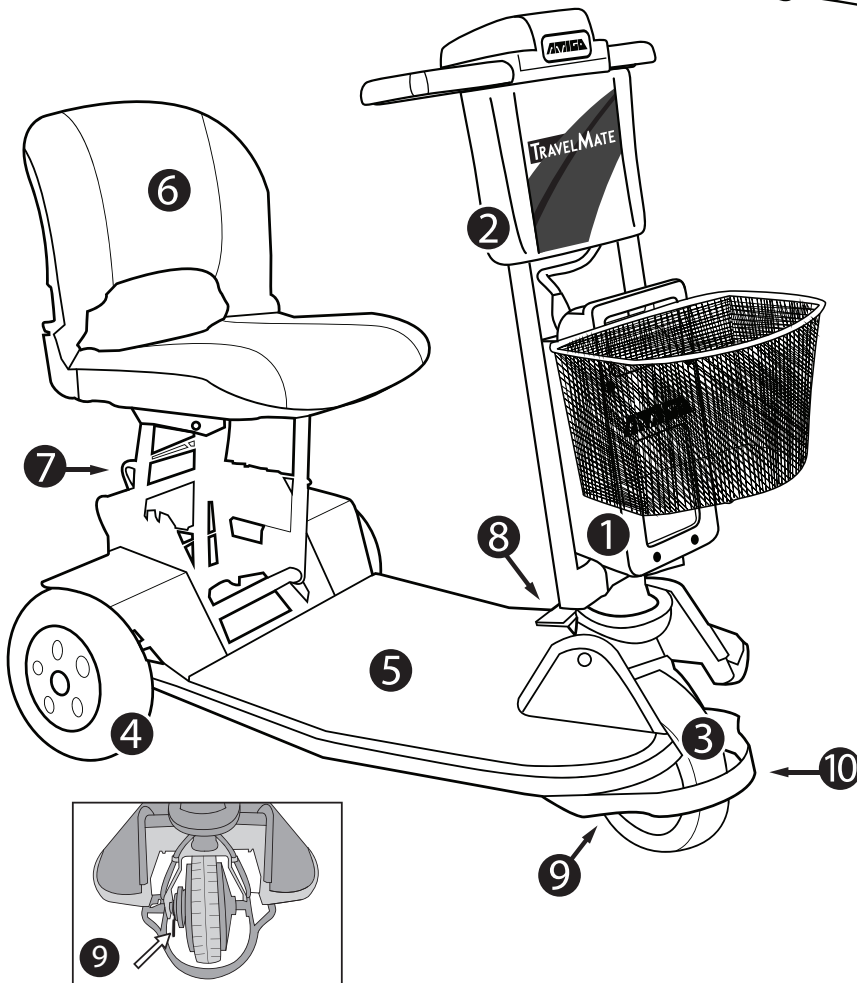
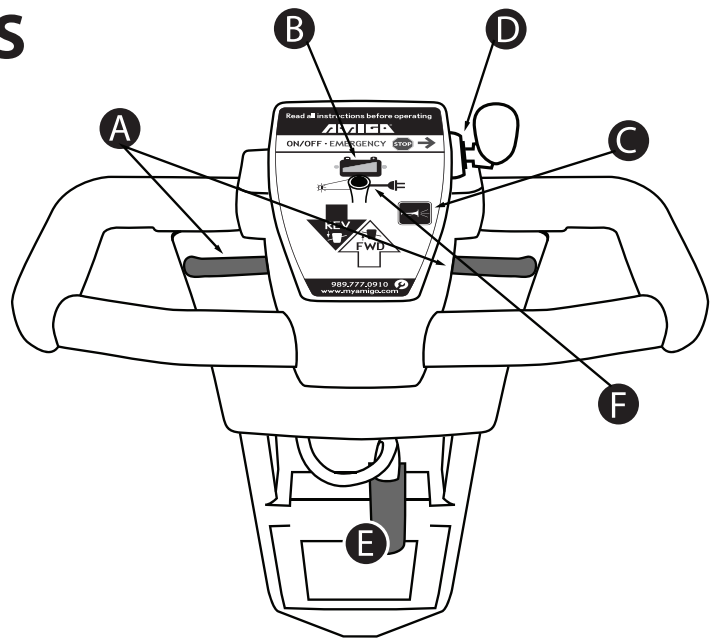
- Read the operating manual before using your Amigo.
- Always turn your Amigo OFF before getting on or off your vehicle.
- Always remain seated while the vehicle is in operation.
- Keep legs on the platform while driving.
- Allow the Amigo to come to a complete stop before attempting to reverse.
- Always drive at a slow, sensible speed while around pedestrians.
- Drive slowly while turning.
- Always drive straight up and down inclines.
- Avoid sudden starts while the tiller is turned sharply.
- Always approach obstacles at a low speed.
- Be aware of mechanical pinch points, especially when folding, assembling and disassembling your Amigo.
- Remove battery case before folding tiller down.
- Always be careful when maneuvering on inclines or ramps. Not all ramps are constructed according to federal standards. The federal standard for wheelchair ramps is 1 inch (2.5 cm) rise per 12 inches (30 cm) = 5 degrees or 8% grade.

DO NOT

- Do not exceed the maximum weight capacity of 250 pounds (113 kg). Exceeding the weight capacity voids your warranty and may result in personal injury and damage to your Amigo. Amigo Mobility will not be responsible for injuries and/or property damage resulting from failure to observe weight limitations.
- Do not drive over or off obstacles more than 1 inch (2.5 cm) high. This could be unsafe and could damage your Amigo.
- Do not reverse down a steep hill or incline.
- Do not park on inclines or declines.
- Do not sit on the Amigo in a moving vehicle.
- Do not allow anyone to ride with you.
- Do not operate your Amigo near stairs, steps, curbs or terraces where you might accidentally drop a wheel off the edge.
- Do not operate your Amigo on streets or other areas with vehicular traffic.
- Do not use the tiller to assist in transferring.
- Do not lift rear section of platform by holding the rear wheel.
- Do not expose your Amigo to spray-on cleaning solutions and excessive moisture such as spraying it with a garden hose, shower or leaving it uncovered in heavy rain.

LOCATION OF CONTROLS

- A. Accelerator lever (right and left)
- B. Battery status gauge
- C. Horn button
- D. ON/OFF key switch
- E. Battery connector plug
- F. Retainer cord knob



IDENTIFICATION OF PARTS

- 1. Battery case
- 2. Tiller
- 3. Hub motor
- 4. Rear wheels
- 5. Platform
- 6. Seat
- 7. Seat adjustment handle
- 8. Tiller release foot pedal
- 9. Freewheeling lever
- 10. Bumper/lifting handle

ATTACHING THE BATTERY TO YOUR AMIGO

1. Place battery down into tiller (Figure 1).
2. Tilt battery towards tiller until latch clicks (Figure 2).
3. Connect battery using the black battery connector plug (Figure 3).

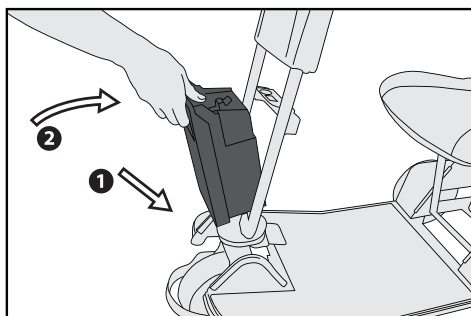


Figure 1

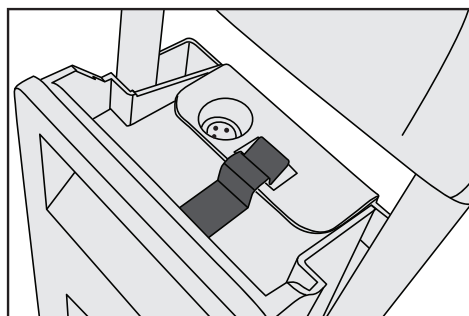


Figure 2

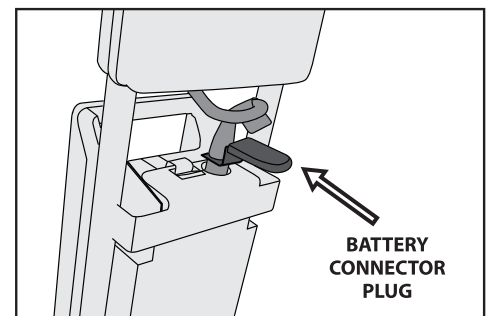


Figure 3

FOLDING/UNFOLDING YOUR AMIGO



CAUTION

REMOVE KEY AND BATTERY CASE BEFORE FOLDING

Folding

1. Remove basket.
2. Disconnect battery using the black battery connector plug. Firmly grip handle and lift straight up to unplug (Figure 4).
Note: gripping and lifting only the end of the handle will not unplug the battery connection.
3. Lift battery and tilt forward to remove (Figure 5).
 - a. A spare battery pack is easily stored under the seat with retainer cord. If you are storing a spare battery, lift retainer cord up and over the top of the battery to release. Remove battery from storage area before folding (Figure 5.1).
5. While holding top of tiller, step on tiller release foot pedal (Figure 6). Lift seat adjustment handle and lower seat onto platform (Figure 7).
6. Push tiller down to rest on seat (Figure 8).
7. To lock tiller in place, loop retainer cord over black knob in middle of enclosure (Figure 9).

Unfolding

1. Remove retainer cord from black knob.
2. Raise tiller until you hear the lower latch click and lock into place.
3. Raise the seat adjustment handle and pull seat up (Figure 7).
4. Reposition spare battery pack by placing under seat. Lift retainer cord up and over the top of the battery to hold in place (Figure 5.1).
5. Reinstall battery case, then power connection, followed by basket. Insert key.

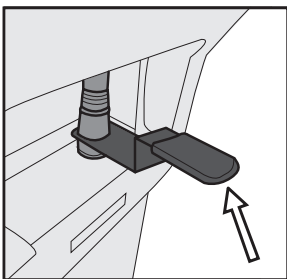


Figure 4

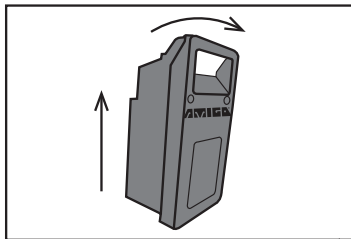


Figure 5

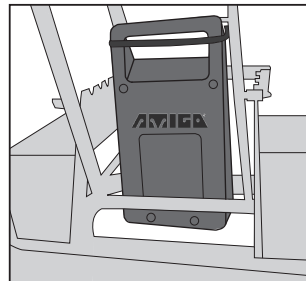


Figure 5.1

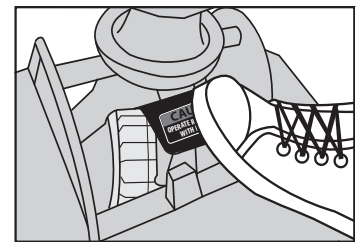


Figure 6

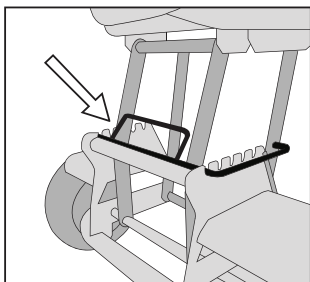


Figure 7

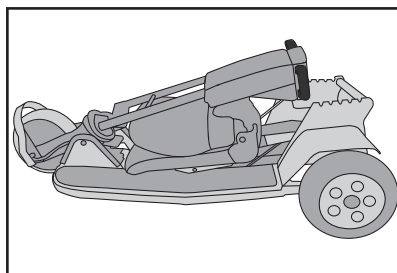


Figure 8

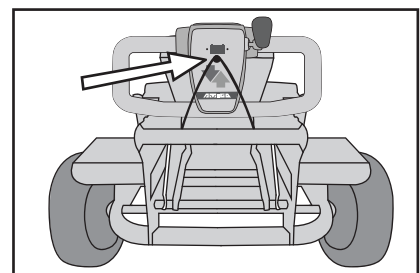


Figure 9

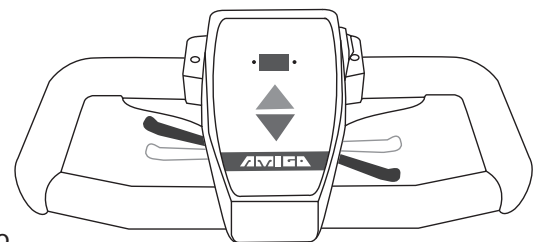
OPERATING YOUR AMIGO

1. Turn the Amigo ON with ON/OFF key switch located on the right side of the handle enclosure.
2. Press the forward accelerator lever or the reverse accelerator lever to move the Amigo. To move forward, pull the right side of the accelerator lever toward you. You can also move forward by pushing the left side of the accelerator lever away from you. To operate in reverse, pull the left side of the accelerator lever toward you (Figure 10) or push the right side of the accelerator lever away from you.

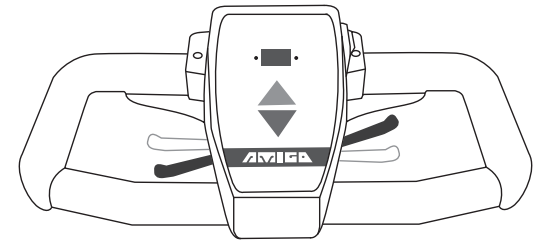
Note: For optional "reverse polarity" handles, accelerator lever operation will be the opposite – to move forward, pull the left side of the accelerator lever toward you or push the right side accelerator lever away from you. To move in reverse, pull the right side of the accelerator lever toward you or push the left side accelerator lever away from you.

3. To stop, just release the accelerator lever and the vehicle will come to a gradual stop after release.

4. **In the unlikely event you lose power**, the drive can be put in freewheeling mode. Push the freewheeling lever (located on the right side of the front wheel, figure 11) downward into the horizontal position (figure 12). Some resistance while pushing in freewheeling mode is normal. To resume power mode, push lever back to the angled position. Before driving, ensure tiller is locked in an upright position.

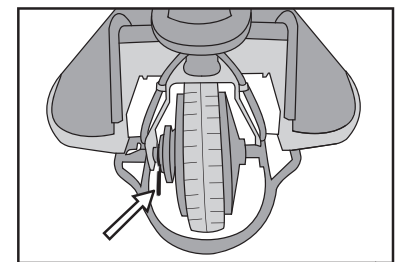


Forward



Reverse

Figure 10



Freewheeling lever
Figure 11

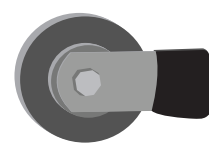
PUSH TOO FAST (PTF) FEATURE

PTF feature is intended as a safety measure to prevent "run away" situations, when in freewheeling mode. The faster the Amigo is pushed (forward or reverse), the more resistance is felt. Speed, not distance, engages PTF. PTF will only activate when battery is connected. Do not disconnect battery when in freewheeling mode.



CAUTION

1. TURN KEY SWITCH TO "OFF" WHEN GETTING ON OR OFF THE AMIGO
2. DO NOT RIDE THE AMIGO WHILE IN FREEWHEELING MODE
3. PUSH FREEWHEELING LEVER TO "NORMAL" POSITION BEFORE RESUMING NORMAL USE OR TRANSFERRING ON/OFF VEHICLE.



Freewheeling
(horizontal)



Normal
(angled)

Figure 12

DRIVING YOUR AMIGO

Steering the Amigo is easy and logical. Give wide clearance when turning so the rear wheels clear any obstacle. Shortcutting a sidewalk corner can cause the back wheel to go off the sidewalk. Avoid this situation by steering an exaggerated wide arc around the obstacles. If you must steer in a tight spot, such as entering a doorway or when turning around, stop and then apply power gently.



CAUTION

TURNING THE KEY SWITCH OFF WHILE IN MOTION WILL BRING THE AMIGO TO A CONTROLLED STOP

Driving through doorways

Approach an unfamiliar door slowly. Does it have a knob or push bar? Does it open toward you or away from you? Think in terms of using the power of the Amigo to do the work for you. Hold the doorknob or bar in one hand and apply the power with the other hand. If the door is self-closing, you can go through allowing the door to close behind you. If it is not a self closing door, stop when you are clear of the door and push it closed. If the door opens toward you, hold the knob or bar with one hand and slowly accelerate in reverse, letting the Amigo do the work for you. When the door is open wide enough, accelerate forward leaving your hand on the door to keep it free from touching the Amigo and letting go as you pass through the door jamb.

Driving on ramps

With the ADA (Americans with Disabilities Act), buildings require ramps for POV (power-operated vehicle) access. Some have U-turns in the middle where good cornering is required. Take wide swings with your front wheel around any tight corners so the rear wheels follow a wide arc to stay clear of the corner. When you have stopped while facing uphill, starting up again simply requires that you apply forward power. Accelerate gently after stopping on an incline. When proceeding up a ramp or curb, lean forward in your seat for maximum stability and safety. Drive slowly when going down any ramp or hill to ensure a safe descent.

TRAVELING WITH YOUR AMIGO

Transport

Amigos are not designed or tested for use as seats in private or public transporting vehicles. Do not transport POVs in vehicles unless folded and placed in the trunk of a car, or placed in the vehicle and strapped down. Even when strapped down, Amigos should not be used as seats in private or public transporting vehicles.

USE A SMALL PIECE OF CARPET OR A HEAVY DUTY TOWEL ON VEHICLE BUMPER WHEN LOADING THE AMIGO INTO THE TRUNK OF A VEHICLE TO PREVENT MARKING OR SCRATCHING OF VEHICLE FINISH.

To transport your Amigo TravelMate, please refer to page 5 for folding/unfolding instructions.



Airline travel

Special handling tags are suggested when transporting your Amigo by airlines. Nonspillable, sealed batteries are approved for travel on airplanes. When you make your reservation, notify the airline that you will be requesting escort service. This will assure that your Amigo will be picked up and delivered at the boarding gate. For additional helpful hints for airline travel, visit our website at www.myamigo.com.

**Optional lithium batteries require you to take battery pack onboard plane as carry-on luggage.*

Public transportation

When utilizing public transportation, do not sit on your Amigo while it is being lifted onto the vehicle or once the vehicle is in motion.

SAFETY WARNINGS

The driving performance of your Amigo can be influenced by electromagnetic fields, such as those emitted by cell phones and other devices. We recommend the power on your unit be switched off when using such a device.

- In some extreme circumstances, your Amigo's performance could be affected by the electromagnetic field emitted from alarm systems in shops (*refer to page 13 for additional information*).
- The program settings in the controller should only be altered by factory-trained service providers in order to maintain safe driving functions.

BATTERY INFORMATION AND CHARGING INSTRUCTIONS

Charging frequency

- Charge batteries daily when the Amigo is used.
- If not in use for a long period of time, charge for 24 hours, every 30 days.
- Extended charging is good for the batteries and will not overcharge them.

Battery information

VRLA (Valve Regulated Lead Acid) deep cycle or optional lithium-ion batteries are used for operating your Amigo. They are maintenance-free and are transportable on aircraft, buses, trains, etc. as there is no danger of spillage. By following the charger and battery procedures, you can expect extended battery life. For maximum range and life, it is recommended to fully charge the batteries before using. Amigos have an overcharge protection feature, so charging at every opportunity is encouraged. It is a common misconception that batteries should be deeply discharged before recharging – this is not true for Amigo batteries. Batteries may be damaged if they are deeply discharged and left sitting.

Battery range depends on driver weight, terrain, temperature and type of battery used. Charge your batteries daily and make sure the charger cord is unplugged from the wall outlet before moving your Amigo. Batteries need charging if the battery indicator light is blinking while operating or if the battery gauge drops to two bars or less.

Your battery indicator light may blink prematurely when under a heavy power demand such as an incline. If it is premature, it will stop blinking when the unit is stopped, and the power switch is cycled to OFF and back ON. If this cycle does not stop the blinking, it is time to recharge.

Charging instructions

The battery charger is designed to charge any type of lead acid batteries (gel, sealed, wet, AGM, etc.) to full charge. The charger can be left connected to the batteries after full charge (green light) without harming the batteries. The charger uses minimum power in this standby-mode (after battery is fully charged) and maintains the batteries at full charge for extended battery life. The battery charger is designed to accept 90-240 volts, 50 or 60Hz AC power input. This makes it possible to charge on any AC electrical system globally.

Battery must be disconnected from TravelMate to charge. Plug the round end of the charger into the socket on top of the battery case, and plug the AC cord into a wall outlet.

The charging light (located on the charger) is normally red, yellow or orange when charging and changes to green when the battery is fully charged.

When disconnecting, remove the AC power first and then disconnect the charger from the battery.





CAUTION

FAILURE TO FOLLOW THESE SAFETY INSTRUCTIONS MAY RESULT IN PERSONAL INJURY OR PROPERTY DAMAGE.



WARNING

IF YOUR BATTERIES ARE DAMAGED AND A LEAK IS APPARENT, CALL YOUR AUTHORIZED DEALER IMMEDIATELY. UNDER NO CIRCUMSTANCES SHOULD YOU TOUCH THE BATTERIES IF THEY ARE LEAKING.



WARNING

TO AVOID DAMAGE TO BATTERIES DURING STORAGE, DO NOT PLACE THEM END-TO-END WITH THE POSITIVE (+) AND NEGATIVE (-) TERMINALS NEXT TO EACH OTHER (FIGURE 13).

Charger standard precautions

- Each time you use your charger, read and follow instructions exactly. Working in the vicinity of a battery is dangerous. Batteries generate explosive gases during normal battery operation.
- Never smoke or allow an open flame in the vicinity of the battery.
- Use charger for charging a 24-volt lead acid or lithium battery pack only. It is not intended to supply power to an extra-low-voltage electrical system or to charge dry cell batteries.
- Do not operate charger in a closed-in area or restrict ventilation in any way.
- A spark near the battery may cause explosion.

To reduce risk of spark:

- Prevent external damage to AC and DC cords.
- When connecting charger, connect DC charging cord to the battery charge plug before connecting charger AC cord to electrical outlet.
- When disconnecting charger, always do so in reverse sequence of connecting procedure. Break first connection as far away from battery as possible.
- Be cautious not to drop a metal tool onto the battery.
- Remove jewelry before handling charger.

Battery storage

If you remove your batteries from the battery case, put them on a surface that cannot be damaged by acid fumes. Whenever a battery is charged and discharged through a cycle, it breathes. The breathing of the battery emits acid fumes and may mark surfaces it rests on for long periods of time.

Store batteries indoors in a dry environment, away from any open flames. Temperature range is **0°C** (32°F) to **40°C** (104°F).

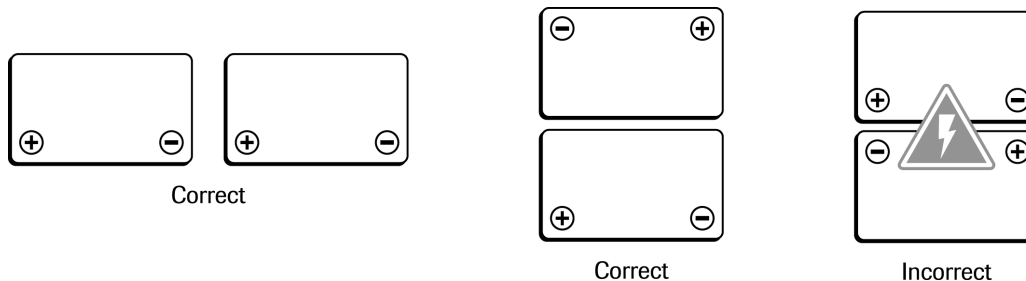


Figure 13

Circuit breaker replacement instructions

An automatic resetting circuit breaker protects the wiring and battery in the event of a short circuit. If your Amigo stops abruptly, wait 10 seconds for the circuit breaker to reset. If the breaker does not reset, check for overloads or short circuits.

Fasteners replacement

Use only Grade 8 (US) or 12.9 DIN (metric) in all applications. For service and replacement parts, we recommend Amigo authorized parts.

Microprocessor controller (MPC)

Do not attempt to service the MPC or related electronic components, as this will void the warranty.

METRIC (ISO 898)

INCH (SAE J429)



=



Grade: 10.9

Tensile: 1040 MPa
(150,800 psi)

Grade: 8

Tensile: 150,000 psi

Battery replacement instructions

Replacement battery must meet passenger and cargo aircraft travel requirements. Danger of explosion if battery is incorrectly replaced. Replace only with the new batteries of the same type in your product. Discard used batteries according to the manufacturer's instructions.

Battery removal

1. Ensure battery pack is not connected to charger or outlet.
2. Remove the four screws as shown in Figure 14 and remove battery case front cover.
3. Remove red wire (#1 in Figure 14) from red terminal on battery (#1 in Figure 14).
4. Remove red wire (#3 in Figure 14) from red terminal on battery (#3 in Figure 14).
5. Remove black wire (#2 in Figure 14) from black terminal on battery (#2 in Figure 14).
6. Remove black wire (#4 in Figure 14) from black terminal on battery (#4 in Figure 14).
7. Lift batteries out of case.

Battery installation

1. Ensure battery pack is not connected to charger or outlet.
2. Place new batteries into battery case, oriented as shown in Figure 14.
3. Install black wire (#2 in Figure 14) to black terminal on battery (#2 in Figure 14).
4. Install black wire (#4 in Figure 14) to black terminal on battery (#4 in Figure 14).
5. Install red wire (#3 in Figure 14) to red terminal on battery (#3 in Figure 14).
6. Install red wire (#1 in Figure 14) to red terminal on battery (#1 in Figure 14).
 - a. Ensure all wire terminals are fully seated.
7. Install battery front cover and install the four screws as shown in Figure 14.

Battery disposal/recycling instructions

1. For best results, use original OEM batteries.
2. Install only new batteries of the same type in your product.
3. Failure to insert batteries in the correct polarity may shorten the life of the batteries or cause batteries to leak.
4. Do not mix old and new batteries.
5. Do not dispose of batteries in fire.
6. Batteries should be recycled or disposed of as per state and local guidelines.

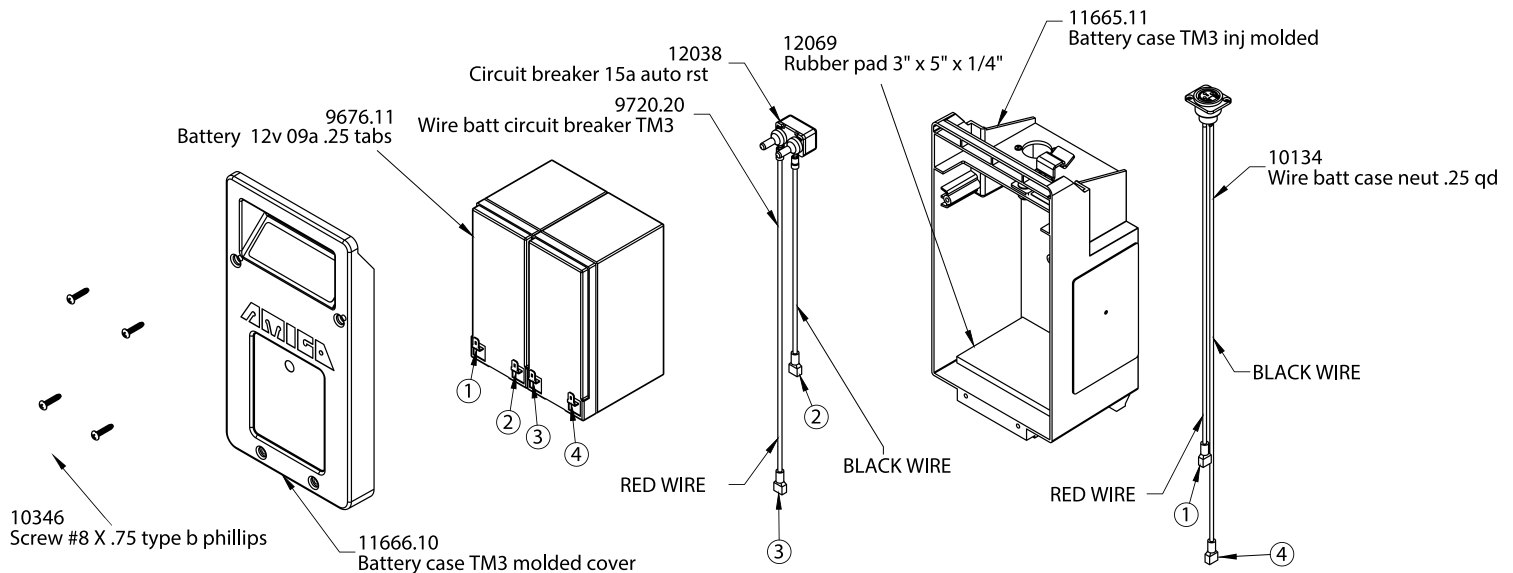


Figure 14

CLEANING INSTRUCTIONS

Tires: The tires should be cleaned with ordinary kitchen-type cleaners and a damp cloth. Don't use solvents on tires as they cause tire material to break down or become too soft.

Platform: The platform of the Amigo is constructed of aluminum and coated with a durable automotive type finish. Use cool water with mild soap to remove dirt and oils. Do not spray the entire vehicle with water. The platform may be waxed with car body wax and buffed by hand with a soft cloth.

Seat: The vinyl seat can be cleaned with a mild soap or detergent and a damp cloth. A vinyl cleaner can also be used. Care should be taken not to soak seats, as the interior foam can hold water.

Floor mat: The floor mat should be cleaned with ordinary kitchen-type cleaners and a damp cloth. Do not use solvents on the floor mat, as they may cause the floor mat material to break down.



CAUTION

KEEP CLEANING SOLVENTS AWAY FROM ELECTRICAL WIRES AND CONNECTIONS.

MAINTENANCE

Minimum maintenance should prevent unnecessary repairs. Check the following:

Daily

- Charge batteries daily when the Amigo is used. Charge the batteries until fully charged to ensure proper battery operation.

Monthly

- Inspect batteries for any cracks or damage of any kind.
- Check and tighten any exposed fasteners.
- Check static ground wire located under vehicle. Replace if damaged or missing. Wire must be in contact with the floor when operating vehicle.

Six months

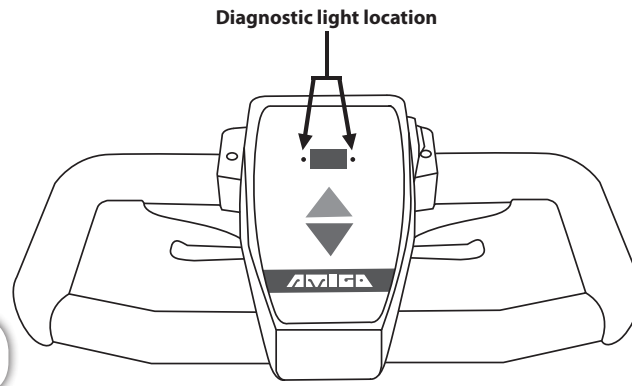
- Check all screws and clips (that are holding wheels) for tightness and wear.
- Check all electrical connections for clean contact.
- Charging connection should be inspected for tight connection.
- Check tires for wear.
- Check and clean battery terminals and the wire connections as needed with a light piece of emery cloth or brush and soda water.
- Inspect inside the battery case, particularly at the bottom, for liquid.

Yearly

- Have your authorized service center check your Amigo completely.

DIAGNOSTICS CODES

The Amigo controller has a built-in diagnostic feature that will cause the diagnostic light LEDs (located on either side of the battery gauge) to flash a numeric code indicating service issues to aid in diagnosis. When indicating a service problem, the diagnostic light LEDs will flash, hesitate for a moment, and then flash again. Follow the code listings below to determine the problem. If the code indicates a service problem, contact your local service representative or call the Amigo service department at **1-800-248-9131** for instructions to verify and correct the problem.



****Note:** First solution listed for each diagnostic code will fix that problem 80% of the time. Attempt solutions in the order listed.

CODE	CAUSE	SOLUTIONS
1-1	EM Brake windings or connections are shorted	<ol style="list-style-type: none"> (1) Unplug handle cable and plug back in. (2) Check all wiring connections and output. (3) Disconnect brake and cycle key, if code changes to 1-2, replace brake. (4) Replace controller.
1-2	EM Brake windings or connections are open or EM brake release lever in "freewheeling position"	<ol style="list-style-type: none"> (1) Ensure EM brake lever is in normal/drive position. (2) Unplug handle cable and plug back in. (3) Check all wiring connections and output. (5) Replace controller.
2-1	Motor windings or connections are shorted	<ol style="list-style-type: none"> (1) Check motor wiring connections. (2) Disconnect brake and cycle key, if code changes to 2-2, replace motor. (3) Replace controller.
2-2	Motor windings or connections are open	<ol style="list-style-type: none"> (1) Ensure EM brake lever is in normal/drive position. (2) Check motor wiring connections. (3) Replace motor. (4) Replace controller.
2-3	Power shortage	<ol style="list-style-type: none"> (1) Check / replace batteries. (2) Check / replace controller.
3-1	Over temperature condition	<ol style="list-style-type: none"> (1) Allow to sit idle for 15 minutes, restart and see if code disappears. (2) Ensure EM brake and / or motor is not causing excessive amperage draw. (3) Replace controller.
4-1	Charger is supplying too much voltage during the battery charge cycle	<ol style="list-style-type: none"> (1) Replace battery charger if voltage is 32 volts or higher. (2) If 31 volts or lower, replace controller.
4-2	Charger not dropping back into "float mode" during battery charge cycle	<ol style="list-style-type: none"> (1) Replace charger wiring. (2) Replace battery charger. (3) Replace controller.
5-1	Controller drive FETS shorted	<ol style="list-style-type: none"> (1) Replace controller.
5-2	Controller regenerative braking FETS shorted	<ol style="list-style-type: none"> (1) Replace controller.
5-3	Throttle hall effect or throttle circuitry reading fail band fault	<ol style="list-style-type: none"> (1) Check to ensure handle cable is in good condition. (2) Check that throttle lever moves freely and returns to center. (3) Replace throttle hall effect.
6-1	Bad software revision	<ol style="list-style-type: none"> (1) Replace controller.

ELECTROMAGNETIC INTERFERENCE



WARNING

RADIO WAVE SOURCES MAY AFFECT POWER-OPERATED VEHICLE (POV) CONTROL. FOLLOW THE WARNINGS LISTED BELOW TO MINIMIZE YOUR RISK TO EMI.

The driving performance of your Amigo can be influenced by electromagnetic fields, such as those emitted by cell phones and other devices. We recommend the power on your unit be switched off when using such a device.

Electromagnetic interference (EMI) from radio wave sources

Powered vehicles may be susceptible to electromagnetic interference (EMI), which is interfering electromagnetic energy emitted from sources such as radio stations, TV stations, amateur radio (HAM) transmitters, two-way radios and cellular phones. The interference (from radio wave sources) can cause the powered vehicle to release its brakes, move by itself, or move in unintended directions. It can also permanently damage the powered vehicle's control system. The intensity of the interfering EMI energy can be measured in volts per meter (V/m).

Important information

1. 20 volts per meter (V/m) is a generally achievable and useful immunity level against EMI (as of May 1994). The higher the level, the greater the protection.
2. The immunity level of this product is not known.
3. In some extreme circumstances, the Amigo's performance may be affected by the electromagnetic field emitted from alarm systems.
4. The program settings in the controller should only be altered by factory-trained service providers in order to maintain safe driving functions.

The sources of radiated EMI can be broadly classified into three types

1. Handheld portable transceivers (transmitters-receivers) with antenna mounted directly on the transmitting unit. Examples include: citizens band (CB) radios, security, police transceivers, cellular telephones and other personal communication devices. **Note:** *Some cellular devices transmit signals while they are ON, even when not in use.*
2. Medium-range mobile transceivers, such as those used in police cars, fire trucks and taxis - usually have the antenna mounted on the outside of the vehicle.
3. Long-range transmitters and transceivers, such as commercial broadcast transmitters (radio and TV broadcast antenna towers) and amateur (HAM) radios. **Note:** *Other types of handheld devices, such as cordless phones, laptop computers, radios, TV sets and small appliances such as electric shavers and hair dryers are less likely to cause EMI problems.*

Powered vehicle electromagnetic interference (EMI)

Because EMI energy rapidly becomes more intense as one moves closer to the transmitting antenna (source), the EMI fields from handheld radio wave sources (transceivers) are of special concern. It is possible to unintentionally bring high levels of EMI energy very close to the powered vehicle's control system while using these devices. This can affect powered vehicle movement and braking.

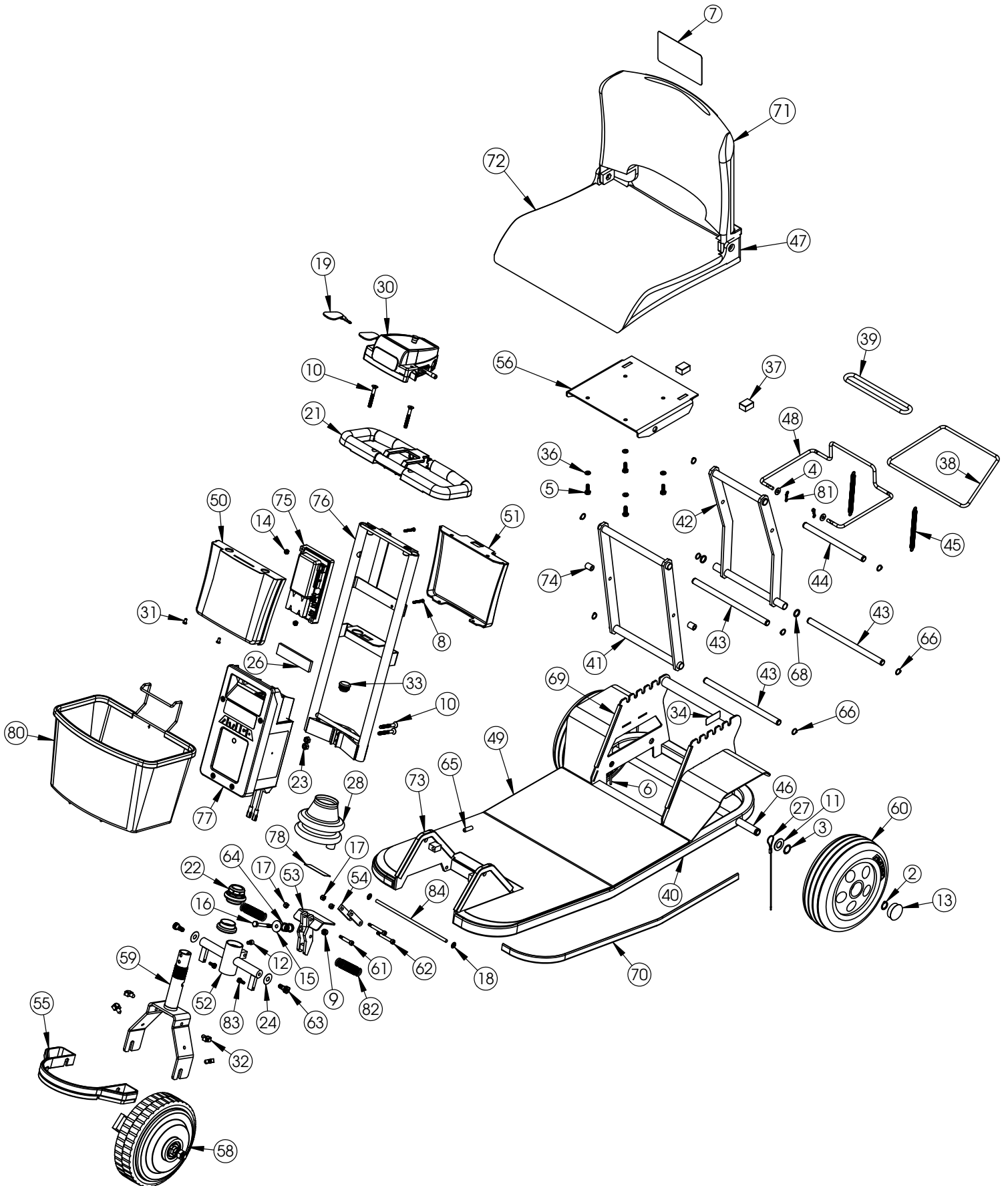
Warnings

Follow the warnings listed to reduce the chance of unintended brake release or mobile vehicle movement, which could result in serious injury.

1. DO NOT operate or turn ON handheld personal communication devices, such as citizens band (CB) radios and cellular phones while the vehicle is turned on.
2. Be aware of nearby transmitters, such as radio or TV stations, and avoid close proximity.
3. If unintended movement or brake release occurs, turn the vehicle off as soon as it is safe.
4. Adding accessories or modifying the vehicle may make it more susceptible to interference from radio wave sources. **Note:** *There is no easy way to evaluate their effect on the overall immunity of the vehicle.*
5. Report all incidents of unintended movement or brake release to the vehicle manufacturer, noting whether there is a source of EMI nearby.

TRAVEL MATE 580004 (EXPLODED VIEW)

NOVEMBER 2015 – PRESENT



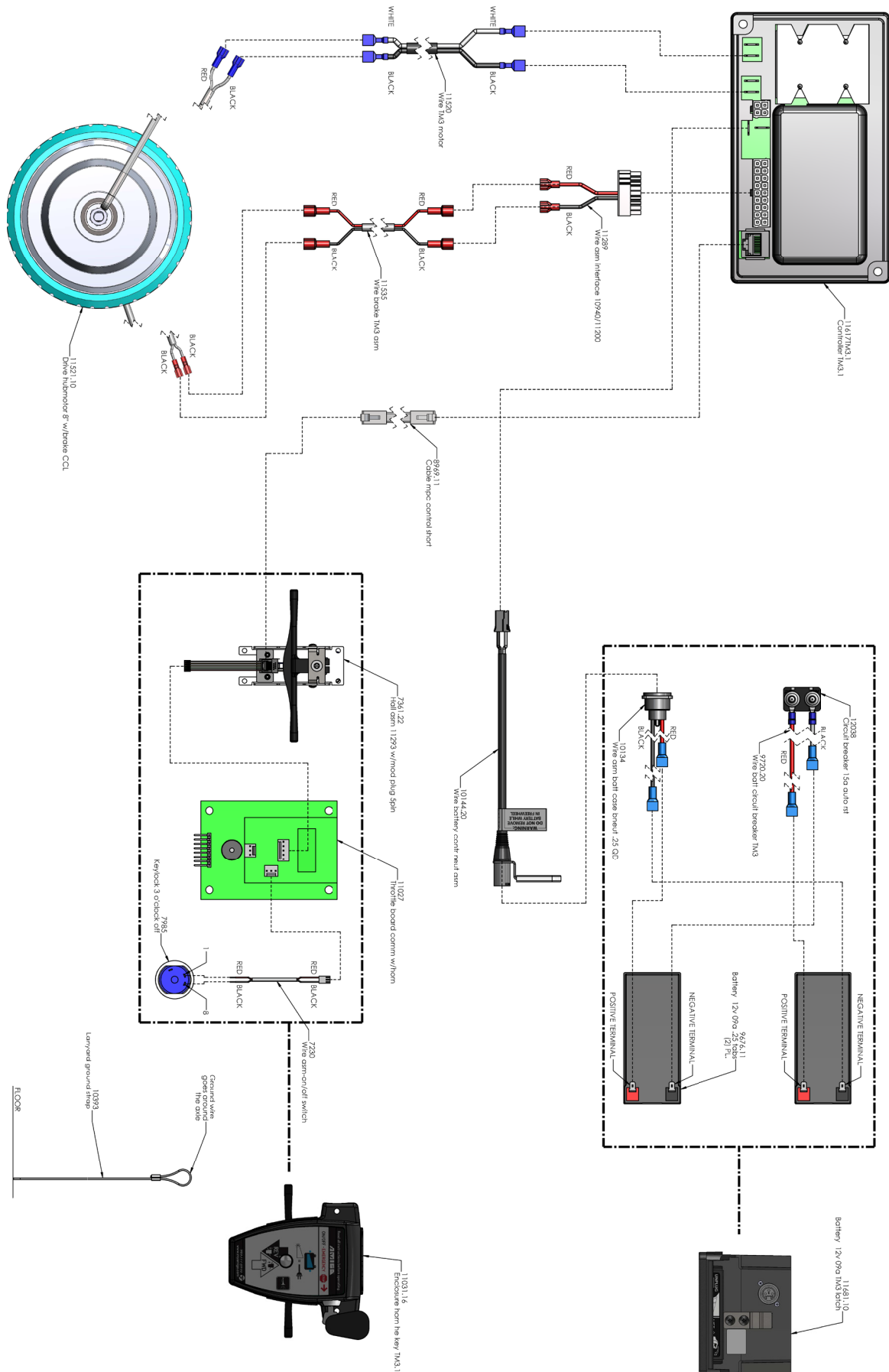
PARTS LIST

TravelMate #580004 – November 2015 to Present

Item	Part	Description	Qty	Item	Part	Description	Qty
1	0106	Ty-rap 6"	2	44	11504	Shaft seat pivot short	1
2	1040	Retainer snap ring	2	45	11505	Spring extension .375od 5 lg	2
3	1069	Washer .65id .88od .016thk	2	46	11506	Axle TM3	1
4	1192	Washer .281 ID .63 OD .06 flat	2	47	11507.20	Seat asm vinyl folding low	1
5	1193	Screw 1/4-20 X .75 hx hd	4	48	11508	Latch seat TM3	1
6	1254	Pin .125 x 1.125 roll	1	49	11509	Mat TM3	1
7	1295	Label seat back	1	50	11510.10	Cover TM3.1 handle front	1
8	2433	Screw #8-32 X 1.25 lg rd hd	2	51	11511.10	Cover TM3.1 handle rear	1
9	3622	Nut 1/4-20 hex nylon	1	52	11512	Pivot steering weldment	1
10	4075	Screw 1/4-20 X 2 hx soc fl hd	4	53	11513	Pivot latch handle	1
11	4269	Washer .63id 1.12od .06thk	2	54	11514.10	Link handle pivot TM3.1	2
12	5190	Screw 1/4-28 X .375 shcs hd	1	55	11515.20	Bumper TM3 asm	1
13	5209	Cap black used on pneu 8" & 10"	2	56	11517	Bracket seat mount TM3	1
14	5630	Nut #8-32 hex keps	2	57	11520	Wire TM3 motor	1
15	5893	Washer .281id 1.0od fender	1	58	11521.10	Drive hubmotor 8" w/brake CCL	1
16	5905	Screw 1/4-20 X 2.25 hex hd	1	59	11522	Fork hub motor	1
17	6227	Nut #10-24 nylon-ins hex	3	60	11524	Wheel 09" rer chr hub TM3	2
18	7600	Nut 1/4 stud push	2	61	11527	Screw #10-24X.25 shld X 1.0	1
19	7997	Key extension (key with fob)	1	62	11528	Screw #10-24X.25 shld X 1.5	2
20	8969.11	Cable mpc control short	1	63	11529	Screw 5/16-18 X .25 shld	2
21	9936.10	Handle oval plastic grip	1	64	11530	Spring .72od x 1.0	1
22	10050	Bearing headset 1-1/8"	1	65	11533	Screw 5/16-18 x 1" set	1
23	10060	Nut 1/4-20 hex heavy walled	2	66	11534	Retainer ring .5 dia shaft	8
24	10067	Washer .38id 1.0od .014 mylar	2	67	11535	Wire brake TM3 asm	1
25	10144.20	Wire battery contr neut asm	1	68	11557	Ring spiral .75id .071 wire	2
26	10151	Foam insert adhesive backed	1	69	11564	Strip glide TM3	2
27	10393	Lanyard ground strap	1	70	11566	Trim chrome frame TM3	2
28	10516	Handle boot lower pvc free	1	71	11568	Seat 16" covr lower low back	1
29	10807	Charger 24v 02a	1	72	11569	Seat cover bottom low back blk	1
30	11031.16	Enclosure horn he key TM3.1	1	73	11578	Trim platform column base TM3	2
31	11084	Rivet black push .20" dia	2	74	11592	Spacer .26id .50od .75 plastic	2
32	11125	Retainer wire	4	75	11617TM3.1	Controller TM3.1	1
33	11128	Plug tube 1" round	1	76	11680.10	Handle TM3 wigwag	1
34	11187	Label serial number AMI	1	77	11681.10	Battery 12v 09a TM3 latch	1
35	11289	Wire asm interface 10940/11200	1	78	11695	Label foot release caution	1
36	11311	Washer lock heavy split 1/4"	4	79	11741	Label warning turn TM3	1
37	11463-RAW	Bumper rubber .5 X 1.0	2	80	11763.20	Basket TM3	1
38	11481.20	Retaining band 21" TM3	1	81	11830	Clip bowtie cotter for .25 od	2
39	11481.21	Retaining band 14" TM3	1	82	11887	Spring extension .75od x 4 lg	2
40	11500.10	Platform TM3 raw	1	83	11888	Screw #10-24 X .125 shld .125	2
41	11501	Arm asm seat pivot	1	84	11889	Rod .25 dia x 8.75 kg	1
42	11502	Arm asm seat pivot rear	1	85	12061	Label TM3.1 product specs	1
43	11503	Shaft seat pivot long	3	86	12072	Lit owners manual TM3.1	1

TRAVEL MATE 580004 (WIRING DIAGRAM)

NOVEMBER 2015 – PRESENT



AMIGO MOBILITY - HEALTHCARE DIVISION

General Warranty Provisions

Amigo Mobility International, Inc. (AMI) warrants the original, completed Amigo it manufactures only to the original owner. If warranty card or proof of purchase is not received, warranty begins on the date the Amigo was shipped.

The warranties on this page do not cover the failure of any part or accessory due to:

- Shipping damage
- Abuse, misuse, accidental damage, or acts of nature
- Exceeding the specified weight capacity of the model
- Improper installation or opening sealed components
- Modifying the Amigo or installing accessories not authorized by AMI

Warranty Coverage:

AMI will repair or replace a part that is defective in material or workmanship under normal use. AMI may use factory-remanufactured parts (rather than new parts) for some warranty repairs. Warranty replacement parts are covered for the remainder of the Amigo unit warranty. AMI covers labor warranty for the first 60 days of ownership.

- Structural components – platform, frame and seat post have a limited lifetime warranty (seven years).
- Main components – controller, charger, motor and transaxle have a two-year warranty.
- Seats and other components have a one-year warranty (cuts and tears in seats are not covered by warranty).
- Batteries supplied by AMI are warranted for one year (freight not included after six months) and carry Amigo brand labels.
 - Damage caused by battery moisture, spillage, or leakage is exclusive of warranty.
 - **Note** - Lithium-ion batteries carry the following warranty:
 - 1) Warranty period is 60 months; beginning when the Amigo healthcare model or batteries are shipped from AMI factory. Serial number of unit/date code on battery will be required.
 - 2) Warranty covers defects in workmanship and material.
 - 3) Failure constitutes a fully recharged battery with less than 50% of its rated capacity under normal operating/charging conditions and is covered within the 60 month period.
 - 4) Lithium-ion batteries must be returned to AMI. Upon receipt, batteries will be tested to confirm warranty conditions are met.
- AMI is obligated to repair or replace products/parts returned by the purchaser and found to be defective under warranty at our factory in Bridgeport, Michigan.
- If inspection determines that a returned part or unit is fully functional or inoperable due to a non-warranty nature, it will be returned at expense of the owner.
- Parts purchased separately from the original unit, or rebuilt units, carry a one year warranty against defects in material and workmanship.

Customer Satisfaction:

Complete satisfaction with your Amigo is our main goal. If you are not satisfied with any maintenance or repair work completed by a local Amigo dealership, please follow these two steps:

Step 1 – Review your concerns with the dealership's management (service manager or general manager). In most cases, a satisfactory solution is found.

Step 2 – Occasionally, an Amigo owner will not be fully satisfied with a dealer's decision or actions. In that case, contact Amigo customer service at 1-800-248-9131. Having the following information available will expedite response time:

- Serial number of your Amigo
- Name of dealer who sold you the Amigo (city and state)
- Date and reason for each visit to dealership

This warranty supercedes and is in lieu of all other warranties, expressed or implied, and no person, agent or dealer is authorized to give any warranties on behalf of AMI, nor to assume for AMI any other liability concerning any of its products unless made in writing and signed by an official of AMI.

This warranty gives you specific rights, with the possibility of other rights, which vary depending upon your locality.



AMIGO MOBILITY INTERNATIONAL, INC.
Improving Lives Through Mobility®

6693 Dixie Highway, Bridgeport, MI 48722-9725
Service: 800-248-9131 or 989-777-0910 • Fax: 800-334-7274 • www.myamigo.com

© 2015 Amigo Mobility International, Inc. Amigo® is a trademark of Amigo Mobility International, Inc • 1115 - 12072