

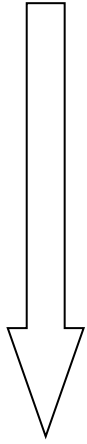
# Operation Instruction

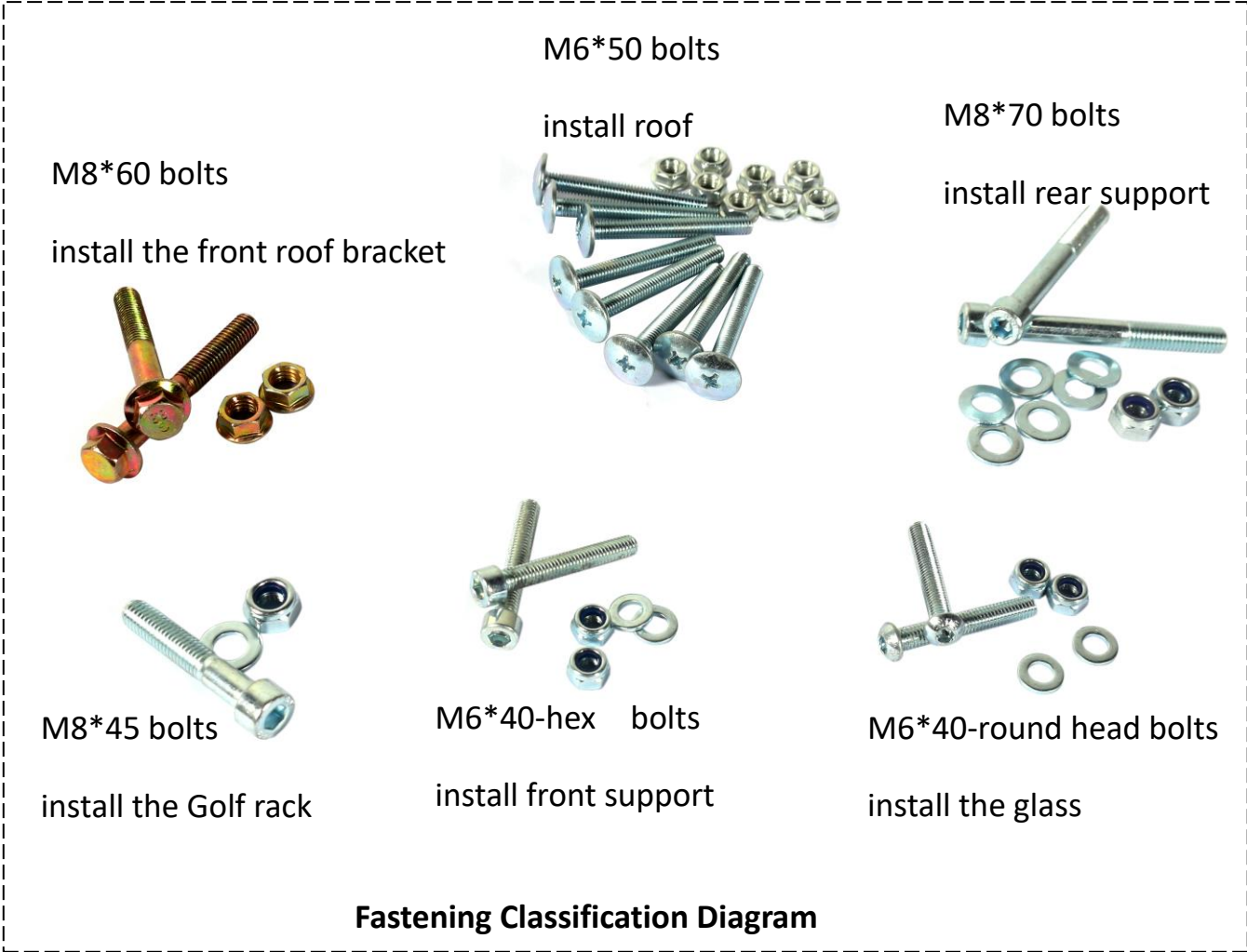




scooter

front windshield





**Fastening Classification Diagram**



seat



charger



battery



Insert the faucet tube.



Grasp the faucet handle and move out of the scooter slowly.



Install the screw of the faucet handle.

⇒ Put the battery into the battery compartment.



⇒ Fixed battery.

⇒ Connect the battery cable.



⇒ Pull the push rod under the seat to fix the seat.



⇒ Install the Golf Stand.

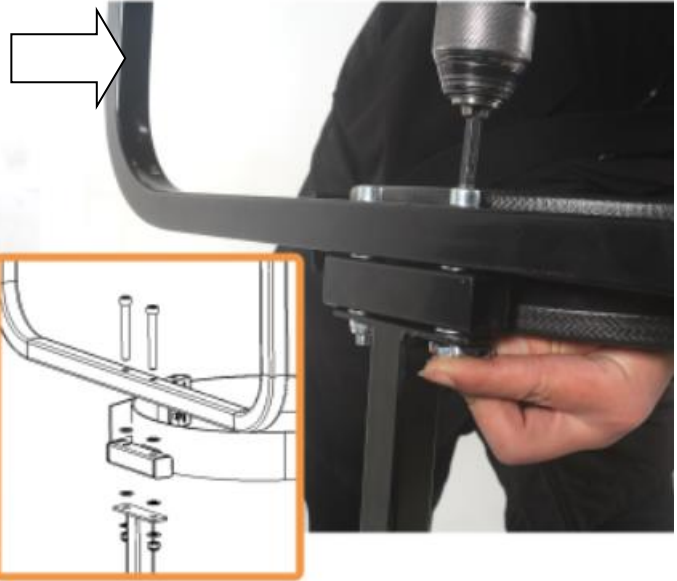




⇒ Install two parts as shown in the figure.

`rear bracket

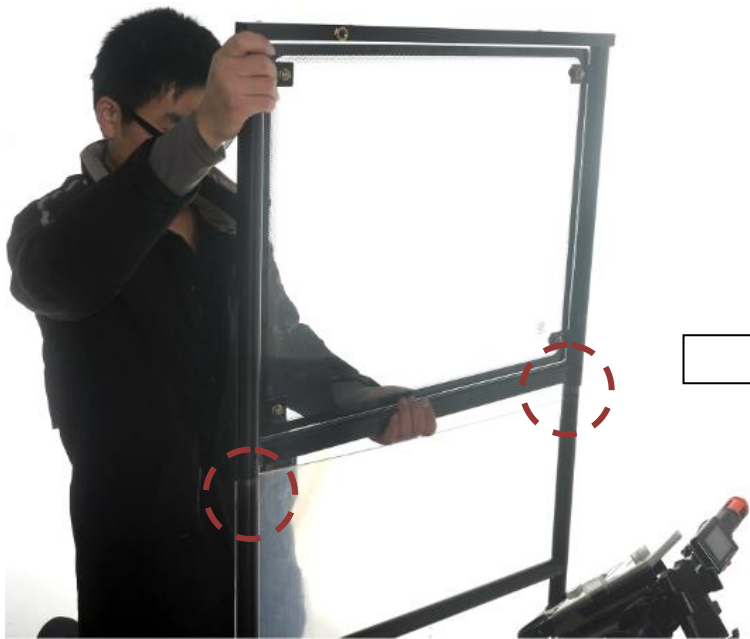
`Golf rack



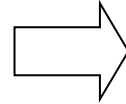
⇒ Install front support.

Tighten the screws.

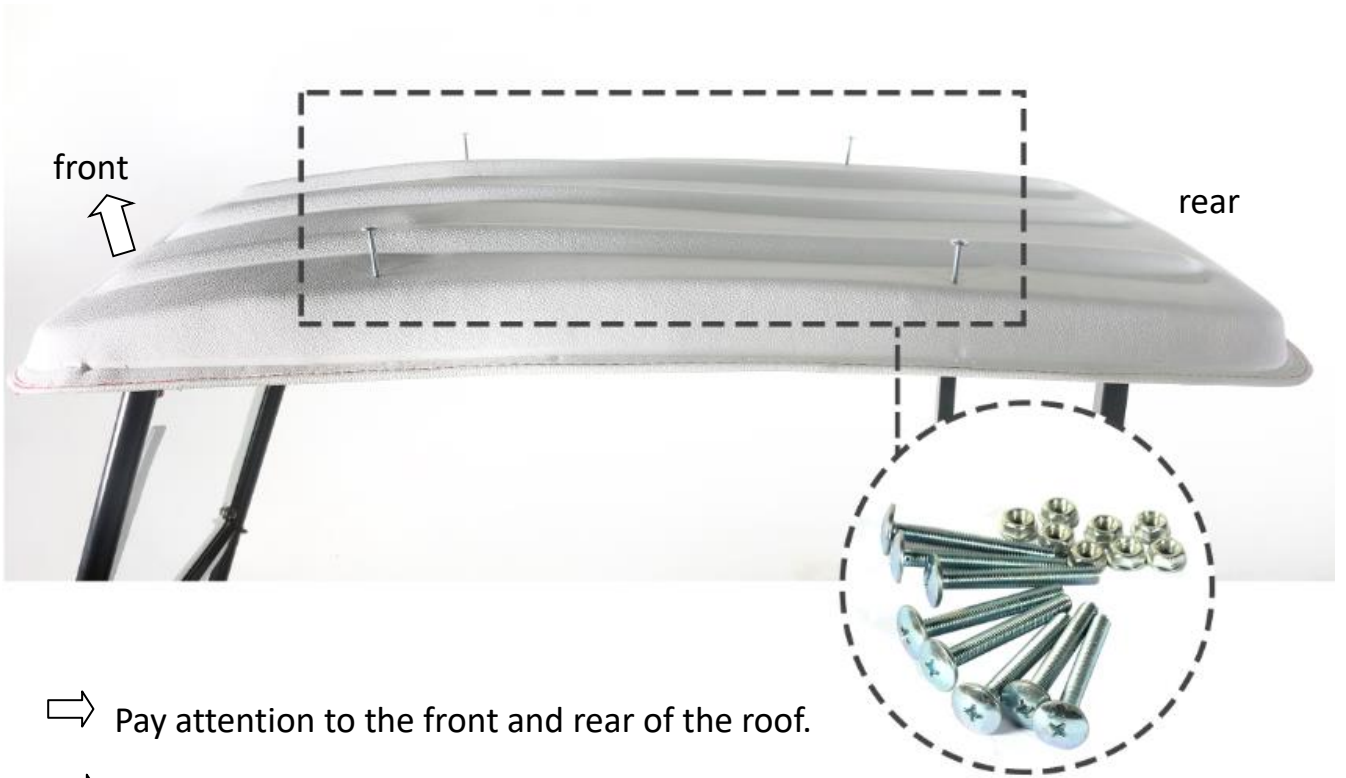




⇒ Install glass.  
Tighten the screws.



↑ Install two parts as shown in the figure. Tighten the screws.



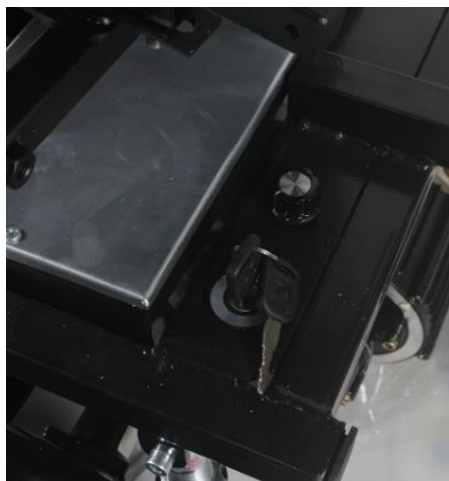
⇒ Pay attention to the front and rear of the roof.

⇒ Install two parts as shown in the figure.

Tighten the screws.



Switch to electric mode.



Turn on the power.



Driving.