

AmericanElectric®

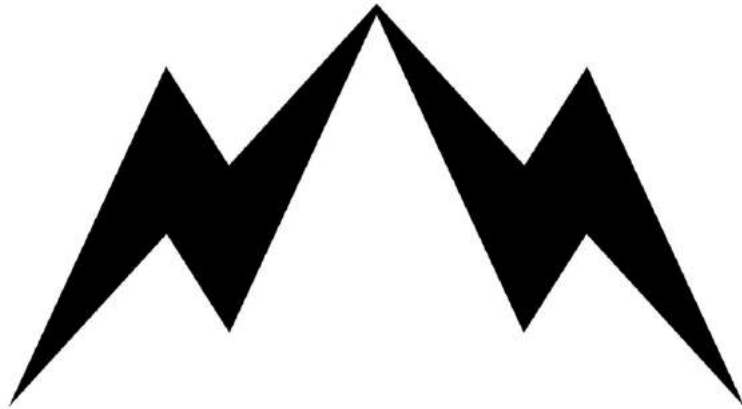
HEADQUARTERS

2649 Park Ln Hallandale Beach, Florida

305-767-3289

service@american-electric.co

american-electric.co



Follow us



@americanelectric

STELLER

AmericanElectric®





CONTENTS

About STELLER -----	1
Carton/Box Contents -----	4
Parts -----	5
STELLER Specifications -----	7
Assembly -----	9
C300s LCD Display -----	15
Error Code Table -----	27
Battery -----	29
Brakes -----	46
Gears -----	49
Tires -----	52
Troubleshooting -----	54
Appearance & Care -----	55
Commonly Asked Questions -	56
Technical Assistance -----	59
Driving -----	60
Returns/Refunds -----	63
Warranty -----	64

**THANK YOU FOR BUSINESS AND
WELCOME TO THE FAMILY**

Welcome to AmericanElectric®

Whether this is your first electric vehicle or you're a veteran recharger, we hope you'll enjoy **STELLER**'s powerful & smooth ride for many years.

We take pride in bringing you a premium product that will offer years of enjoyment. Please read this manual fully before assembling and riding your bike. If you have any questions after reading it, please reference the AmericanElectric® website, contact us by email, or gives a call. We are here to help!

AmericanElectric®





ABOUT STELLER

STELLER

The Steller Sea Eagle was the inspiration behind our branding concept. The Steller is an endangered, beautiful bird and is also one of the largest birds of prey in the world. Potent, mighty, unique, just like the new Steller by AmericanElectric®.





CARTON/BOX CONTENTS

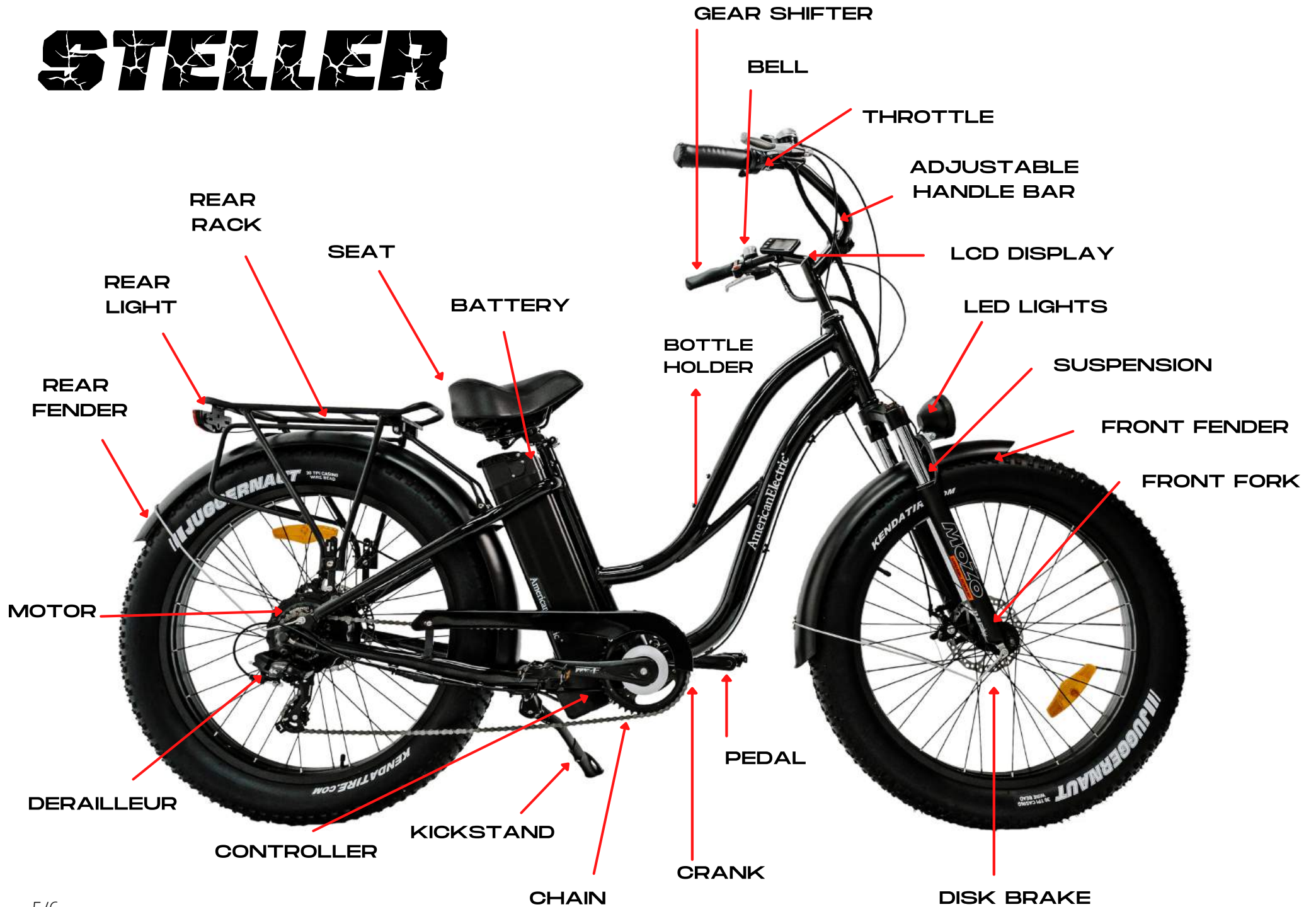
Caution – Please use care when opening the box with sharp objects to avoid cutting any bicycle parts inside.

After opening please check the box for the following content:

1. Bicycle frame with the following attached but not assembled:
 - A. Handlebar
 - B. Front Wheel
 - C. Front Brake Calipers

2. Small Box Containing Battery Charger, Manual, Spare Tool Bag, Stem, and Pedals.

STELLER



STELLER SPECIFICATIONS

BRAKE CALIPERS Tektro Aries (MD-M300)	KICKSTAND Heavy-duty aluminum with wide plastic foot	FENDERS Full coverage front & rear alloy fenders
FRAME High Quality 6061 Aluminum Frame size 19"	BRAKE LEVERS Aluminum alloy comfort grip levers with motor cutoff switch	FORK Aluminum Fatman MoZo front suspension fork
SADDLE AmericanElectric foldable plush seat	DERAILLEUR Shimano 7 speed Tourny	BRAKE ROTORS Tektro 180 mm front and rear
PEDALS Alloy sport pedal with reflectors	WEIGHT 77 lbs / 35 kg	TIRES Kenda Juggernaut 26" x 4"
CHAIN KMC Chain	GEARING 1x 7-speed	RACK Rear rack included
STEM Alloy stem	BRAKE PAD MATERIAL Sintered metal	GRIPS Durable Faux leather
HANDLEBAR Alloy cruiser	RIMS Single wall rims, 36H	LOAD CAPACITY 350 lbs / 158 kg



ASSEMBLY

AmericanElectric® suggests taking your electric bike to a professional bike technician for assembly.

If you are comfortable assembling it on your own then please refer to the directions below.

Warning – When removing packaging and zip ties do not use box cutters or knives as you may damage paint or tires.

We suggest a pair of scissors.

1. Carefully remove the packing from around the bicycle.
2. Carefully cut the zip ties holding the front wheel and handlebars to the frame.
3. Mount the front tire to the front forks using a 15mm wrench to tighten outside nuts.

ASSEMBLY

4. Make sure that all wires and cables are facing front and not twisted; install handlebar into handlebar stem tightening the two bolts on handlebar stem using an allen wrench. Tighten the handlebar as tight as possible.

5. Caution – When installing pedals there are two separate pedals for the left and right sides of the bike. They have different tread patterns and it is important to be sure each is installed on the correct side of the bike to avoid stripping the threads. The following procedure is performed so that when the bike is pedaled it tightens the pedals.

6. Right Pedal – Facing the bike from the chain side, place pedal with R on the end of its bolt-on chain side of the bike and tighten by turning clockwise (top of wrench turning towards the front of the bike as noted in the picture below.) Tighten pedal very tight.

ASSEMBLY

7. Left Pedal – Facing the bike from the kickstand side, place the remaining pedal on the kickstand side of the bike and tighten by turning counter-clockwise (top of wrench turning towards the front of the bike as noted in the picture below.) Tighten pedal very tight.

8. Slide brake calipers over the front brake disc and bolt to the front fork using an Allen wrench.

9. Spin the front wheel to determine if the disc is rubbing. A small amount of rubbing is OK but if it is slowing the wheel then an adjustment is needed. To adjust use two bolts on calipers to move in and out as needed. If you have issues then we suggest bringing the bike to a local professional bike shop for brake adjustments.

10. Align seat on the seat post.

11. Inflate tires to 20-30 PSI.

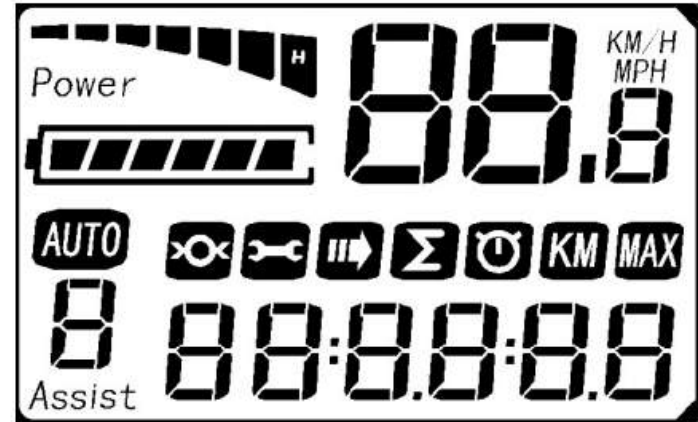


C300S LCD DISPLAY

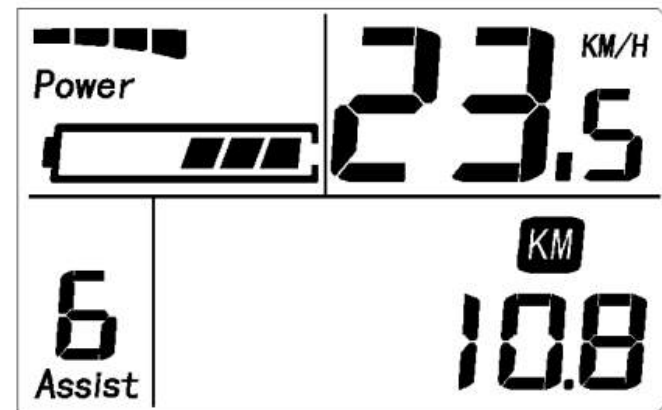
To ensure better performance of your STELLER, please read through this introduction carefully before using it. We will inform you of all the details concisely when using the display. Meanwhile, the introduction will also help you solve possible confusion and malfunction.

IMPORTANT! – Holding the minus key down more than 5 seconds will put the bike into walk mode. The motor will turn on and the bike will move forward at 6 mph until you release the minus button or apply the brakes.

FULL VIEW AREA



NORMAL VIEW AREA

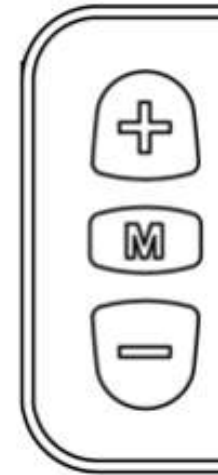


UNDERSTANDING C300S LCD DISPLAY

C300S provides a wide range of functions and indicators to fit the users' needs. The indicated contents are as below.

1. MODE
2. Current display
3. Speed display
4. KM/H & MPH
5. Backlight indicator
6. 6KM/H work
7. Assist level selection
8. Error code indicator
9. SET operation
10. Distance indicator
11. Battery indicator
12. Auto sleep after 5 minutes

BUTTON DEFINITION



C300S has three buttons, including MODE, UP, and DOWN.

“MODE” names to “M”,

“UP” names to “+” and

“DOWN” names to “-”.

NORMAL OPERATION

1. MODE

Hold MODE and start the display. The display will provide power for the controller. With the display on, press MODE for 1.5 seconds to turn off the power. With the display off, there is no battery consumption. The leakage current is no more than 2 μ A.

The panel will go to sleep when the speed is less than 2 km/h for 5 minutes.

2. CURRENT DISPLAY

That represents the discharging current of the controller currently, each segment is 2A, six segments is ≥ 12 A



3. SPEED DISPLAY

It displays the current riding speed of the e-bike. The speed display is as below.



4. KM/H & MPH

Select KM/H or MPH for the speed and mileage, display will be the currently selected unit's display.

5. BACKLIGHT INDICATOR

With the power on, hold UP for 1.5 seconds and turn on the backlight. Click it again and turn off the backlight.

6. 6 KM/H WORK

Hold DOWN for 1.5 seconds and enter into the mode of power assist walk. The e-bike is traveling at 6Km/h. Display as shown below.



7. ASSIST LEVEL SELECTION

Click UP or DOWN to change the stages and output power ratio, the output power range from level 1 to level 5 for the default (the levels can be customized by the user), the default value is level 1.



8. ERROR CODE INDICATOR

If there is something wrong with the electronic control system, the display will flash at 1 HZ and show the error code automatically. Different error code is corresponding with different fault information, please see the last page Error code table for details.

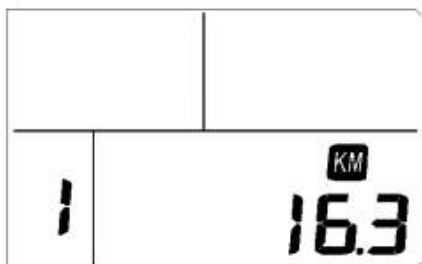


9. SET OPERATION

Hold DOWN & UP 2 seconds to enter into the mode of setting. Click MODE to choose setting parameters and click DOWN & UP to exit setup.

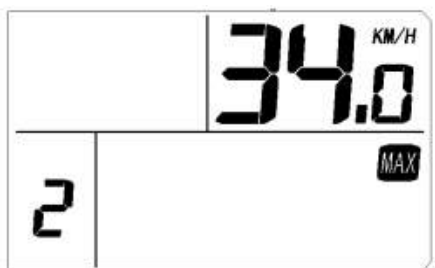
9.1 Reset trip distance, trip time, and max speed

Click DOWN to clear trip distance, trip time, and max speed.



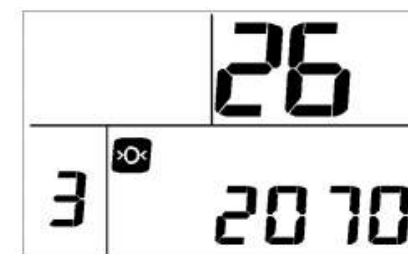
9.2 Max speed setting

The max speed is 40 km/h for the default. Users can modify the value of max speed, when the riding speed exceeds the set value, the controller will stop supplying power to the e-bike, in order to ensure the safety of the rider. The max speed ranges from 20 km/h to 34 km/h and then the max speed is 40km/h.



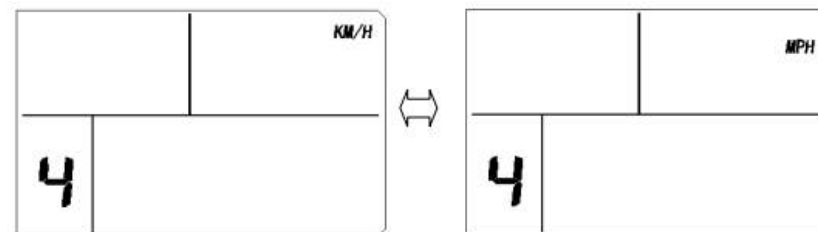
9.3 Wheel diameter setting

Select the accurate wheel diameter value to ensure the accuracy of a display about speed and mileage



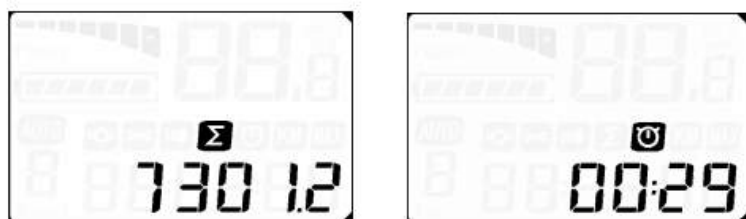
9.4 KM/H & MPH

Click UP or DOWN to switch the KM/H & MPH selection.



10. DISTANCE INDICATOR

With the display on, click the MODE to switch the display information. In turn shows ODO and trip time, trip distance, max speed, auto cycle display.



11. BATTERY INDICATOR

When the battery capacity is high, the six battery segments are all light. When the battery is low, the battery frame will flash. It indicates that the battery is severely low and needs to be recharged immediately.



12. AUTO SLEEP AFTER 5 MINUTES

When the riding speed is less than 2 km/h for 5 minutes, the system will go to sleep automatically.

COMMON PROBLEM & SOLUTIONS

Q: Why the display is not able to start up?

A: Checking the connector between display and controller.

Q: How to deal with the error code?

A: Fix it to the maintenance place immediately. If cannot be resolved, you can go to the electric vehicle repair points repair it in a timely manner.

ERROR CODE TABLE

ERROR CODE	DEFINITION
21	Current Abnormality
22	Throttle Abnormality
23	Motor Phase Abnormality
24	Motor Hall Signal Abnormality
25	Brake Abnormality
9	Panel Communication Abnormality





BATTERY CARE & CHARGING

Your STELLER comes with a 48 Volt lithium battery and charger. Please be aware of the following:

1. Only use the charger provided with your battery. Using a different charger may result in overheating, fire, or an explosion damaging your battery and everything around it.
2. You should recharge your battery after each use or when the battery indicator on the battery or display indicates that the battery charge is low.
3. Battery may be charged while attached to the bike or separately. The battery may be removed by turning the key to the unlocked position, pulling the handle up, and lifting the battery.

4. To charge the battery plug the charger into the wall outlet first and then into the port located on the side of the battery.

5. Continue charging until the red light turns green indicating a full charge or the display shows the battery is full. (Approx. 4-6 hours).

6. Then first remove the charger power plug from the wall followed by the battery side plug.

7. To avoid shortening its lifespan always recharge your battery before it becomes completely discharged. Completely discharging the battery reduces the number of recharge cycles and reduces its capacity. It can also ruin the battery. It is ok to charge the battery after every ride.

8. Never store the battery in a discharged state.



9. If you need to store your battery for an extended time, charge it fully, store it in a cool dry place, and recharge every three months.

10. Do not subject the battery to high temperatures or leave the battery in direct sunlight for extended periods of time.

11. Do not place the battery near the fire or corrosive substances.

12. Do not immerse the battery in water or other liquids.

13. Do not open or alter the battery or battery Charger.

14. If you experience any unusual odors or sounds coming from your charger or battery unplug it immediately and contact service@american-electric.co



LITHIUM-ION BATTERY

1. Ensure the battery is off by inspecting the key port markings.
2. Move the rubber cover on the charging port on the opposite side of the battery from the key switch.
3. Plug the charger into the battery's charging port. With the battery on or off the bike, place the charger in a flat, secure place, and connect the DC output plug from the charger (round barrel connector) to the charging port on the side of the battery.
4. Plug the charger into a power outlet. Connect the charger input plug (110/220-volt plug) to the power outlet. Charging should initiate and will be indicated by the LED charge status lights on the charger illuminating the as a red light.

5. Unplug the charger from the outlet, then the charging port. Once fully charged, indicated by the charging indicator light turning green, unplug the charger from the wall outlet first and then remove the charger output plug from the battery charging port. Always charge your battery in temperatures between 50 °F–77 °F (10 °C–25 °C) and ensure the battery and charger are not damaged before initiating charge.

BATTERY CHARGING INFORMATION

- Check the charger, charger cables, and battery for damage before beginning each charge.
- Always charge in a safe area that is cool*, dry, indoors, away from direct sunlight, dirt, or debris, in a clear area away from a potential to trip on the charging cords, or for damage to occur to the bike, battery, or charging equipment while parked and/or charging.

*Always charge your battery in temperatures between 50 °F–77 °F (10 °C–25 °C).



- The battery can be charged on or off the bike. To remove the battery, turn the key to the off and unlocked position, remove the key from the key port by pulling directly backward without twisting, and then carefully pull the battery forward and up until the battery detaches from the receptacle.

- Recharge the battery after each use, so it is ready to go the full range per charge next ride.

There is no memory effect, so charging the battery after short rides will not cause damage.

- Charging the battery normally takes 3-6 hours. In rare cases, it may take longer to allow the battery management system to balance the battery, particularly when the bike is new or after long periods of storage. Balance the battery during the first three charges.

- Remove the charger from the battery within one hour of the green light indicating a complete charge. The charger is designed to automatically stop charging when the battery is full, but unnecessary wear of the charging components could occur if the charger is left attached to the battery and a power source for longer than 12 hours.

PRECAUTIONS

Operate and charge your STELLER according to the safety requirements in this manual.

- Charge the battery fully before use – approximately five to six hours.
- Always charge with the original AmericanElectric® brand charger.
- Never dismantle the charger.
- Every AmericanElectric® charger has a “trickle-down” feature which adjusts the rate of the charge; however, generally -as a precaution- do not charge the battery for more than 12 hours at a time.
- Charge at least once per month when not in use.
- Charge in a well-ventilated area.
- If the charger emits an odor, discontinue charging and contact your AmericanElectric® dealer immediately.
- Keep the charger dry and away from water.
- Disconnect the charger from your STELLER when charging is complete.
- When the indicator light turns green, the battery is fully charged. Disconnect the charger.

- Bring the battery indoors in temperatures below 50°F.
- Keep the terminals clean and tight.
- Full discharge strains the battery. Do not run the battery past 80% of its charge.
- Recharge the battery after every use.

BATTERY PACK REPLACEMENT

Even with proper care, rechargeable batteries will not last forever. When the battery needs replacement, please contact an AmericanElectric® store. Batteries must be recycled by law. It is illegal to dispose of lithium-ion batteries.

BATTERY LIFE

Under normal use, your battery is designed to undergo 800 charging and discharging cycles. After much use, its charge holding capacity will decrease and eventually not hold enough charge even for shorter trips. At this point, you should contact AmericanElectric or your dealer to order a new battery.

BEFORE YOUR FIRST RIDE

There are a few things you will need to know before your first ride.

Follow these quick steps and you will be on the road in no time

1. Adjust the Seat – Pull the seat clamp handle out from the seat post to release pressure allowing you to raise or lower the seat. After a seat is at the desired level turn the handle until the clamp is tight and then push the clamp towards the seat post to lock.

1. Helmet – AmericanElectric suggests that you always wear a helmet when operating your electric bike and the federal government says that it is the law that you wear one. Please be sure to wear a quality helmet and follow the manufacturer's directions for fit and use.

2. Safety Check – Please perform a routine safety check of your entire electric bike before each ride. Look for any loose nuts or bolts. Check that the brakes are operating properly. Be sure the tires are at 20-30 psi and have no cracks or other excessive wear before riding.

3. Safe Location – your new STELLER is a powerful electric bike. It is important to choose a safe area to familiarize yourself and become comfortable with all of its functions, features, and performance. Choose an area away from other bikes, cars, or people. Only move from this area after you have completed the suggestions in step 6 “Understanding Power/Throttle Control.”

4. Turn on Battery – Turn key in battery right from off position to on position.

5. Understand the Power/Throttle Control – Your STELLER can be used in 3 modes. Pedal only, throttle only, and pedal assist. You can use the power button on the top left of the display to turn on and off the power to the bike.

A. When the power is turned off the bike is in pedal only mode and operates like a standard bicycle.

B. When the power is turned on the assist level will be at 1. Press the “-“ key to set PAS to 0. The bike is now in throttle only mode. You can pedal the bike like a standard bicycle or push the throttle down to bring the bike from zero power to full power. Be sure you are on the bike as it will move when you depress the throttle. You can stop the motor by releasing the throttle or applying the brake.

C. When PAS is set from 1 to 5 the bike is in pedal-assist mode. Use the “+” and “-“ keys to adjust the PAS level. As you pedal the motor will assist you as you ride. AmericanElectric suggests starting at a lower setting of 1 – 3 until you are used to this feature.

D. When in Pedal Assist Mode the throttle will override the pedal-assist speed limit.

E. When starting in pedal-assist mode with the power level at 5 the bicycle will accelerate from a stop to full power quickly. Do not ride the bike with pedal assist at level 5 until you have ridden the bike several times at a power level below 3 in a safe area as described above and are completely comfortable.

6. Stopping the Motor

A. The left and right brake levers have a built-in feature that will stop the electric motor any time they are squeezed.

B. In throttle only mode releasing the throttle will stop the motor as well.

C. While in pedal-assist mode stop pedaling and release the throttle or squeeze the brake handle to stop the motor.

D. If you keep pedaling after the brake lever is released the assist will start the motor again.



BRAKES

Your STELLER is equipped with front and rear disc brakes.

1. Pulling the left brake lever will apply brakes to the front wheel. Pulling the right lever in will apply brakes to the rear wheel.
2. Be aware that using too much front brake force can cause the front tire to lock or slide. Too much pressure on the front brake can also cause the rider to be thrown over the front handlebars. Slow down then start your turn.
3. Always apply pressure to the front brake gradually and use both front and rear brakes at the same time.
4. Occasionally the disc brakes may make a slight scraping ground although they are not being applied. This is normal and is no cause for alarm.
5. When depressing the brake lever the rider should feel a good bit of pressure pushing back and the brake lever should not touch the handlebar. If the lever feels easy to depress or touches the handlebar then the brakes should be adjusted by a qualified bicycle technician before riding

GEARS

Your STELLER is equipped with a 7 speed Shimano Gear System. The shifter is located on the right-hand side of the handlebars. Lower gear numbers are used for climbing hills and slower speeds. Upper gears are used for flatter surfaces and faster speeds. Be sure you are pedaling while changing gears. To shift gears up from 1 to 7 pull the shift lever towards the grip with your index finger. To shift gears down from 7 to 1 press the shift lever below the grip with your thumb.

When looking at the sprocket on the rear hub you will notice that when the shifter is in 1st position the chain is on the largest sprocket.

When the shifter is in the 7th position the sprocket should be on the smallest sprocket.

Occasionally the shifter gear number and sprocket locations may not match. If this happens then the derailleur needs an adjustment.

DISCONNECTING POWER TO REAR MOTOR

Your STELLER has a powerful electric motor that is located in the rear hub of the bicycle. If removal of the rear tire is necessary you must first disconnect the power cable that runs to the hub.

This can be done by pulling both ends of the cable in opposite directions at the connector. When putting the tire back on the connector has an arrow on each plug that has to be aligned as you plug it in. If you do not have a bike stand, put the bike on its side on a soft carpet and remove the tire.

Do not put the bike upside down as it will damage the throttle and display on the handlebars.



TIRES

1. Before each ride always inspect your tires for cracks or wear. If any issues are found always address them before riding.
2. Check tire pressure with a quality tire gauge and be sure the pressure is between 20-30 psi.
3. If the tire will no longer hold air then the tube may need to be replaced.
4. STELLER employs 26-inch rubber tires and tubes. The tires are designed for durability and safety and should be checked before each use. Proper inflation, care, and replacement will maintain STELLER'S operational features and ensure safe riding conditions.
5. AmericanElectric® recommends STELLER'S tires maintain inflation at 20 - 30 psi. It is critically important that proper air pressure is always maintained. Do not under inflate or overinflate your tires. Low pressure may result in loss of control, and overinflated tires may burst. Failure to maintain proper air pressure may result in tire or wheel failure.

TIRES

6. Inflate your tires from a regulated air source with an available pressure gauge. Inflating your tires from an unregulated air source could overinflate them, and burst the tire.

7. Even tires equipped with built-in flat-preventative tire liners, like those that come with bikes by AmericanElectric, can and do get flats from punctures, pinches, impact, and other causes. When tire wear becomes evident or a flat tire is discovered, you must replace the tires and/or tubes before operating the bike. Failure to replace the tire could damage STELLER, or cause injury.

8. When changing a tire or tube, ensure that all air has been removed from the inner tube prior to removing the tire from the rim. Failure to remove all air from the inner tube could result in serious injury.

TROUBLESHOOTING

PROBLEM	POTENCIAL CAUSE	SOLUTION
Motor does not start when bike is powered on	1.Electrical hub 2.Controller	Contact American Electric service center
Ignition does not start	1. Insufficient battery power 2. Faulty connections 3. Battery not fully seated in tray 4. Battery not powered on 5.Brakes are applied 6. Blown discharge fuse	1.Charge the battery. If battery does not retain charge, Contact American Electric service center for replacement 2.Clean and repair connectors 3.Install battery correctly 4.Turn on bike with key 5.Disengage brakes 6.Contact American Electric
Motor will not turn off	1.Faulty throttle 2.Damaged Controller	Contact American Electric service center
Motor stops running	1.Electric Hub	Contact American Electric service center
Decreased range	1.Low tire pressure 2. Low or faulty battery 3.Driving with too many hills, headwind, braking, and/or excessive load 4.Battery discharged for long period of time without regular charges, aged, damaged, or unbalanced 5.Brakes rubbing	1.Fill tire to 20 psi 2.Check connections or Charge the battery. If battery does not retain charge, Contact American Electric service center for replacement. 3.Assist with pedals 4.Contact American Electric 5.Contact American Electric service center for adjustment
Battery will not charge	1.Charger not well connected 2.Charger damaged 3.Battery damaged 4.Wiring damaged 5.Blown charge fuse	1.Adjust the connections 2.For all others, contact American Electric for replacement
Wheel or motor makes strange noise	1.Loose or damaged wheel spokes or rim 2.Loose or damaged motor wiring	Contact American Electric service center

APPEARANCE AND CARE

1. When Cleaning is needed always use automobile tar and bug remover or WD-40 and wipe off with a cloth. Do not get oil on the disk brakes.
2. Avoid spraying water directly on your STELLER to prevent electrical issues.
3. Avoid storing your STELLER in direct sunlight as well as areas that are damp or wet.
4. Check the condition of STELLER before every ride, looking for loose nuts, bolts, and fixings.
5. Check the brakes to ensure both the front and back brakes are working properly.
6. Ensure that the tires are inflated to 20 psi before every ride.

COMMONLY ASKED QUESTIONS

Do I need a driver's license to ride my STELLER?

No, because it is considered a bicycle. Federal and most States law require you wear a helmet.

How far can I travel on one charge?

Many variables affect the range you can travel such as wind, terrain, etc. On average you can travel at least 20 miles. Up to 30+ if you help by pedaling and slow down to 15 mph.

How much does it cost to charge the battery?

Again, there are many variables but a general estimate is about 5 cents a charge.

What is the cost per mile to ride my STELLER?

Using the averages above it costs about half a penny per mile! That works out to about 1200 MPG! All while reducing your carbon footprint every time you use your bike instead of your car!



TECHNICAL ASSISTANCE

For Technical assistance or warranty assistance, or replacement parts please call us at 305-767-3289

IMPORTANT! READ BEFORE RIDING!

1. Electric bikes can be dangerous to use. The user or consumer assumes all risk of personal injuries, damage, or failure of the bicycle or system and all losses or damages to himself, others, and property arising as a result of using this bicycle.
2. Always wear a helmet.
3. AmericanElectric® bikes are designed for one passenger only. Do not operate a bicycle with more than one passenger on board.

4. Do not open the battery or battery charger.
5. Your insurance policy may not cover accidents involving the use of this bicycle. Please contact your insurance company or agent to ensure proper coverage.
6. **WARNING:** As with all mechanical components, the bicycle is subjected to wear and high stresses. Different materials and components may react to wear or stress fatigue in different ways. If the design life of a component has been exceeded, it may suddenly fail possibly causing injuries to the rider. Any form of crack, scratches, or change of colouring in highly stressed areas indicate that the life of the component has been reached and it should be replaced.

DRIVING

- Always mount STELLER before turning the bike on to avoid accidentally initiating the throttle and sending the bike forward.
- Turn the key to the “ON” position, and press the “ON” button on the display. When the display is on, you are ready to ride in both throttle and pedal assist mode.
- Using the push lever, you can switch from gear 1 through 7. Gear 1 is the highest level of assistance, and 7 is the lowest level of assistance.
- The motor will turn on when you begin to pedal and you will not need to use the throttle. You may increase the speed of STELLER by using the throttle.
- The throttle is operated by twisting the right handlebar grip inward. The farther the throttle is twisted from its resting position, the more power is delivered to accelerate.
- To slow down, release the throttle, stop pedaling, and pull on hand brakes.
- When parking STELLER, always shut off the motor first, then prop bike by moving kickstand to downward facing position, and lean bike on the stand.

RETURNS/REFUNDS

- Refunds are available for store credit only.
- Refunds items should be in new conditions. Manipulated, modified, scratched, broken, damaged, or useless items are not eligible for refunds.
- A 10% restocking fee will apply to any returned items.
- Customer assumes return shipment costs. AmericanElectric® will only pay shipping costs if the return is a result of AmericanElectric®'s errors (you received an incorrect or defective item, etc).
- Damaged items will require a claim to be open with the carrier prior to exchange or return.
- The customer is responsible for the proper packaging of the item to ensure the returned item arrives in good re-saleable conditions.
- The customer is responsible for the return shipping of all items.
- For more detailed information, please consult the warranty included in this manual.

REGULATIONS

Steller is classified as a bicycle. In most states, driver's license, registration, and insurance are not required. Parking is usually free. For applicable laws in your region, please consult the nearest Department of Motor Vehicles.

- AmericanElectric® is not responsible for the rider's behavior.
- AmericanElectric® strongly encourage riders to obide regulations in the interest of promoting the electric lifestyle.

Riders are personally responsible for their actions and safety, and legally required to obey laws and restrictions. No matter how you choose to travel on our roadways, safety should always come first.

- Bicyclists and drivers alike share responsibility for roadway safety.
- Bicycles can be hard to see and are obviously more vulnerable to collisions than other drivers.
- Stay alert, be courteous, and share the road responsibly.
- Pay attention to surroundings.
- Always assume drivers in cars can not see you.
- Wear proper protective clothing (helmet, goggles, gloves, and proper footwear).
- Ensure STELLER is appropriate for your level of expertise, is comfortable, and easy to handle.
- Inspect the bike before riding, check fluid levels and brakes.
- Have fun!

WARRANTY

FRAME

Limited Lifetime Warranty

MOTOR

10 Year Limited Warranty

DRIVETRAIN

3 Year Limited Warranty

BATTERY

3 Year prorated battery.
0-12 Months of free repair or replacement.
13-24 Months 50% off a replacement.
26-36 Months 25% off a replacement.

WARRANTY

AmericanElectric® supports its products in times of distress. We understand problems occur, and solutions are required; that is why we offer an AmericanElectric®'s Premium Warranty for all of our products. Even if you did not buy directly from AmericanElectric®, this warranty still applies, provided you purchased the product from an authorized AmericanElectric® dealer.

AmericanElectric® offers a limited lifetime warranty on the frame, 10-year limited warranty on the motor, 2-year limited warranty on the drivetrain, and 3-year prorated on the battery (0-12 months of free repair or replacement. 13-24 months 50% off a replacement. 25-36 months 25% off a replacement).

We also offer a 30-day manufacture's warranty on certain parts, such as pedals, cranks, bulbs, mirrors, rear storage, alarm system, etc. This warranty is effective the day the product delivered, and it applies to factory defects and defaults only. It does not apply to misuse or broken parts caused by the user or by any other event(s).

Warranty is limited to water damage, cracked/bent motors, accidents, manipulated or open parts/components rust, or any type of accidental damage caused by the rider/owner.

AmericanElectric® will pay for standard shipping service costs on the first warranty shipment only. The customer must pay shipping costs for any additional warranty parts. An original purchase receipt is required.

If any battery should become faulty within the specified warranty period, we will replace that battery free of charge. Please return defective batteries to AmericanElectric®. We do not pay shipping fees for incoming batteries; however, we will pay to ship the battery replacement battery to you.

AmericanElectric® does not offer this warranty on products purchased from the second seller, non-authorized AmericanElectric® dealers, products purchased used, products purchased via outlet center, etc. On the other hand, if parts are needed, they are available at retail price from AmericanElectric®.

1. **SHIPPING DAMAGE:** Should your item arrive with damage that is a direct result of the assigned shipping carrier's mishandling, AmericanElectric® will replace those damaged parts free of charge under warranty, as long as the damage is reported immediately after delivery. Damage reported after 3 business day, are considered not valid. In the event that the damage is determined to be extensive (digital photos may be required), AmericanElectric® may arrange to pick up and replace the item free of charge.

2. **TIRES, TUBES, & KICK STANDS:** The warranty does not apply to these items unless they are damaged as a result of shipping.

3. **DURING YOUR WARRANTY PERIOD:** AmericanElectric® will replace any defective part free of charge. Shipping fees may apply.

If you have questions about this warranty, please call 305-767-3289
A friendly and knowledgeable representative will respond as soon as possible

AmericanElectric®



ENJOY THE RIDE