

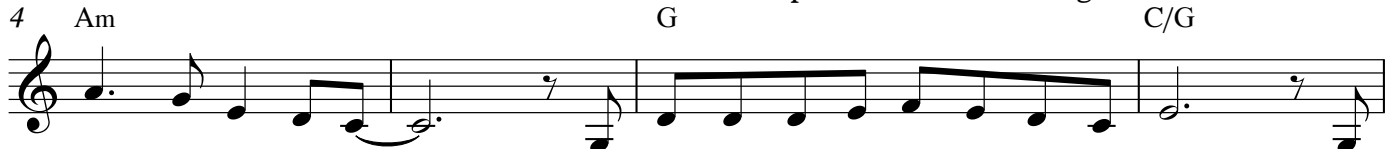
Little Baby Jesus

PATTIROKUS@GMAIL.COM

Gently ♩ = 100



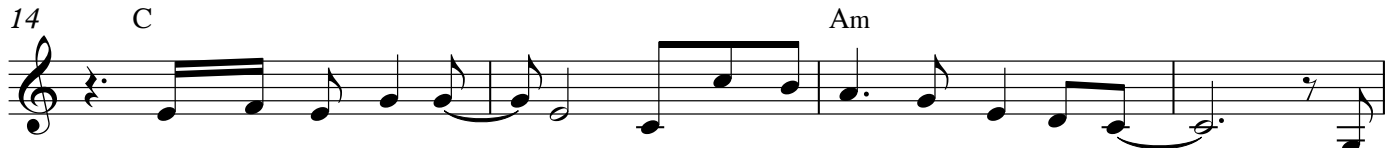
1. Lit - tle mo - ther Ma - ry. a hum - ble
 2. Lit - tle Ba - by Je - sus. How far you've
 3. Lit - tle shep - herds watch - ing for end - less



girl, the cho - sen one — to bring the ho - ly child as long fore - told; to
 come to be with us. — I won - der what it's like be - yond the clouds. How
 years, a ho ly sign. — The an - gel came to tell them of His birth. The



trade our pain for joy, ev ery soul. —
 does your love sur - vive a - mong us now?
 new - born Son of God to save the Earth.



1b. Lit - tle mo ther Ma - ry. You stood the scorn of ev - ery man. — But
 2b. Lit - tle Ba - by Je - sus, How will your arms em - brace us all? — How
 3b. Then the Heav - ens o - pened. The hosts of God broke out in song. — The



Jo - seph saved you from the an - cient law. and walked with you and God — through it
 can you lift a world that's fal - len down? Willyou show us how to make our way back
 Sav - ior of the Earth had fin - ally come. Me - si - ah as a babe, the Ho - ly



all. **CHORUS:** Please let your light shine over all, — Heal the bro - ken hearts, let the
 home?



an - guish fall a - way, — To - day.

2

The image shows a musical score for guitar, consisting of two staves. The first staff contains a sequence of chords: C, C/B, C/Bb, Am, and Fm/Ab. The second staff contains a sequence of chords: C/G, Fm/Ab, C, and C. The music is written in a treble clef and features a melodic line with eighth and sixteenth notes, and a bass line with chords and single notes. The Am chord is marked with a circled 'e' below it, indicating a natural E note. The Fm/Ab chord is marked with a flat sign below it, indicating a Bb note. The piece concludes with a double bar line.