

FOR ALUMINUM DOORS

A Rim Panic Exit Devices

LOCK STILE
INSIDE FACE

DRILL AND TAP 1/4-20 (2)

DRILL AND TAP 12-24 (2)

LHRB DOOR RHRB DOOR

NOTE: FOR KEY CYLINDER ONLY
DRILL 7/32" HOLES AND COUNTERSINK (2)
AND DRILL 1/2" CYLINDER SPINDLE HOLE

FOLD DOWN ALONG THIS LINE AND PLACE AGAINST DOOR JAMB — LHRB DOOR

FOLD DOWN ALONG THIS LINE AND PLACE AGAINST DOOR JAMB — RHRB DOOR

39-17/32"
BOTTOM OF
STILE TO
THIS LINE



39-17/32"
BOTTOM OF
STILE TO
THIS LINE



FOR ALUMINUM DOORS

A Rim Panic Exit Devices

LOCK STILE
OUTSIDE FACE

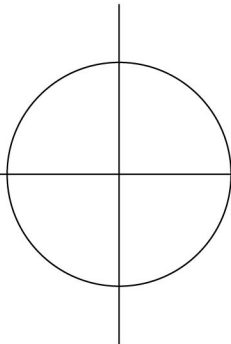
FOLD DOWN ALONG THIS LINE AND PLACE AGAINST DOOR JAMB — *RHRB DOOR*

FOLD DOWN ALONG THIS LINE AND PLACE AGAINST DOOR JAMB — *LHRB DOOR*

NOTE: FOR KEY CYLINDER ONLY
DRILL 1-3/16" CYLINDER HOLE

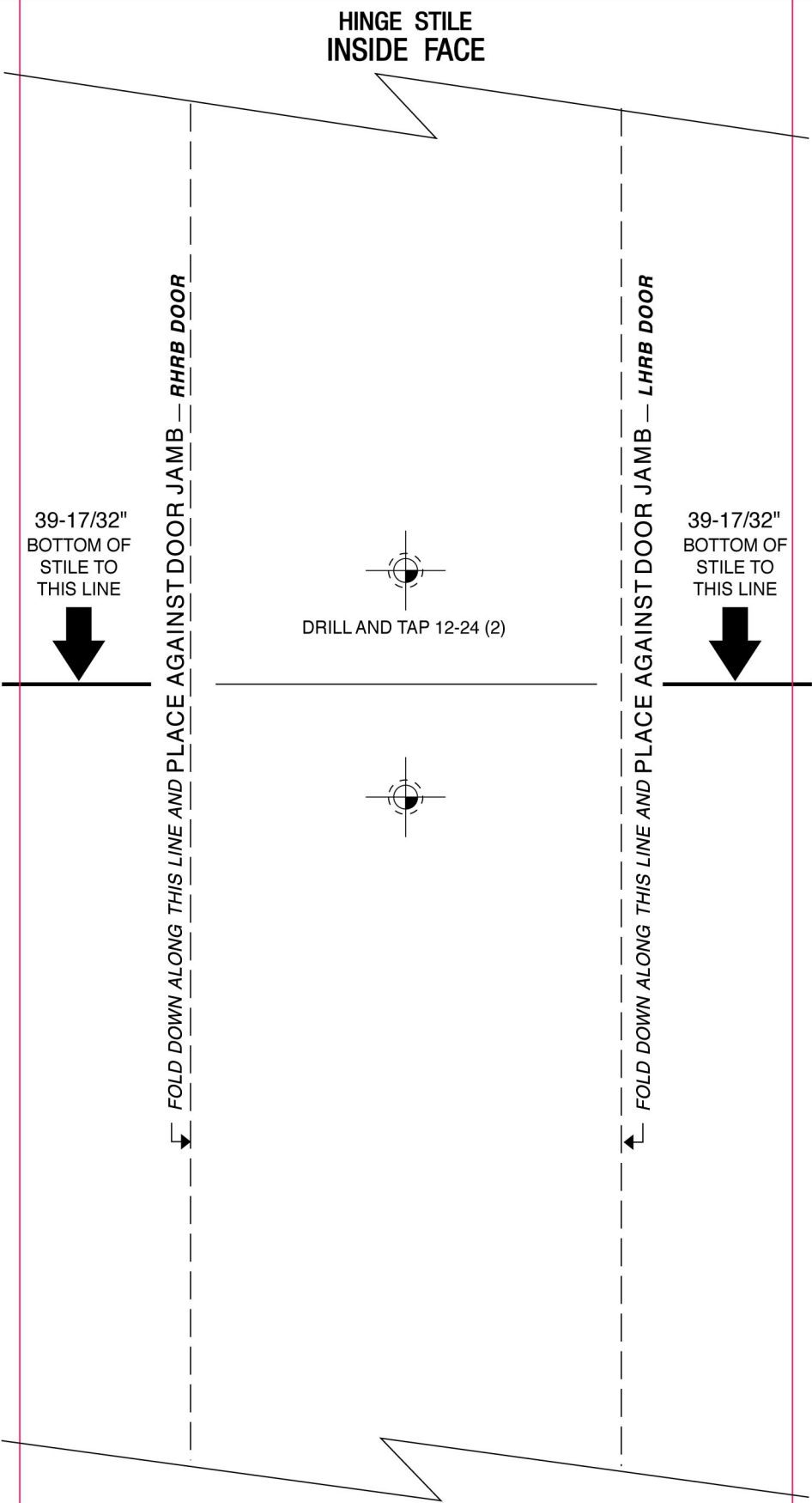
39-17/32"
BOTTOM OF
STILE TO
THIS LINE

39-17/32"
BOTTOM OF
STILE TO
THIS LINE



FOR ALUMINUM DOORS

A Rim Panic Exit Devices



HINGE STILE
INSIDE FACE

39-17/32"
BOTTOM OF
STILE TO
THIS LINE



FOLD DOWN ALONG THIS LINE AND PLACE AGAINST DOOR JAMB — RHRB DOOR



DRILL AND TAP 12-24 (2)

39-17/32"
BOTTOM OF
STILE TO
THIS LINE

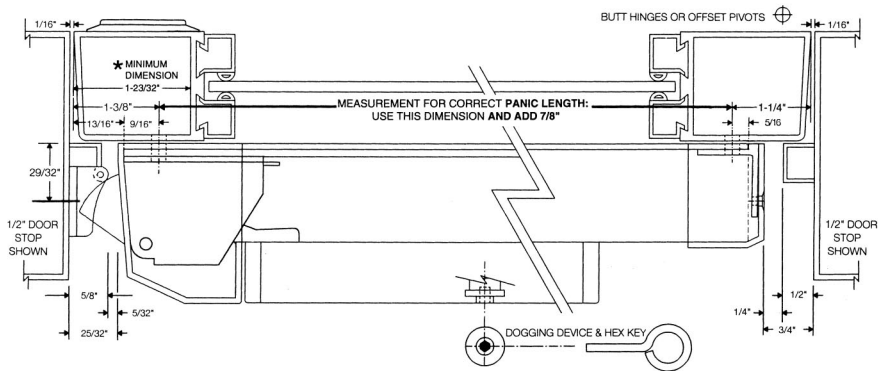


FOLD DOWN ALONG THIS LINE AND PLACE AGAINST DOOR JAMB — LHRB DOOR

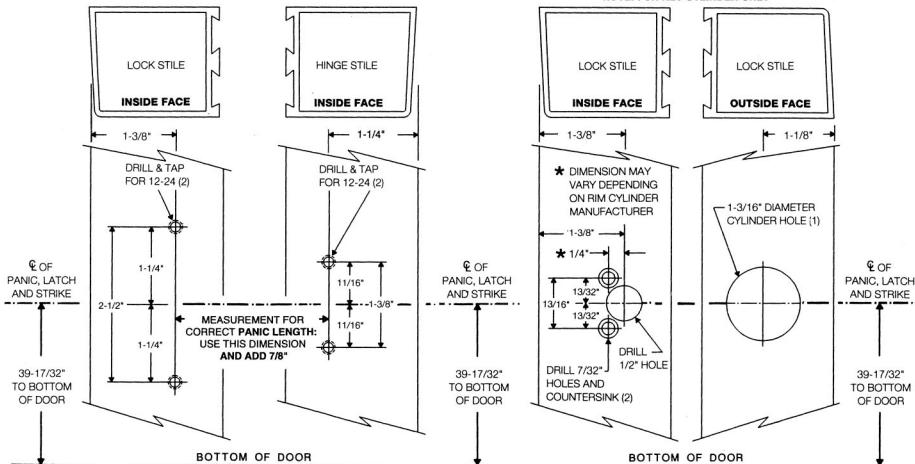


Modern • Flat Touch Bar • Rim • Panic Exit Device

INSTALLATION INSTRUCTION ALUMINUM STOREFRONT DOORS LHRB DOOR SHOWN (RHRB OPPOSITE)



NOTE: FOR KEY CYLINDER ONLY



INSTALLATION INSTRUCTIONS

- Determine hand of door and prepare inside face of Lock and Hinge Stile as shown.
- NOTE: For Key Cylinder Only**
If Key Cylinder is to be used, prepare inside and outside face of Lock Stile as shown. Cut Spindle of Rim Cylinder to project thru the door 5/32". Install Rim Cylinder and secure with (2) 12-24 Filister Head Machine Screws.
NOTE: Cut off excess Screw Length at break-off points as required.
- Measure for correct Panic length. Measure distance from centerline of mounting holes on Lock and Hinge Stiles of door as indicated **AND ADD 7/8"**. Mark the measurement on back of the Panic from Latch End towards the Hinge End to be cut. Stuff a rag in the end of the Back Channel prior to cutting off excess length so that metal chips will not get into the mechanism. Protect the area to be cut and then cut to correct length. Deburr inside and outside edges of cut pieces.
- Drill (2) clearance holes for 12-24 Machine Screws in Hinge End of Back Channel as indicated. Attach Hinge End of Panic and Hinge End Mounting Bracket **LOOSELY** on Hinge Stile with (2) 12-24 x 1" Pan Head Thread Cutting Machine Screws and Lock Washers or (2) #12 x 1-1/4" Pan Head All-Purpose Screws and Lock Washers.
- Attach Latch End on door with (2) 12-24 x 1" Pan Head Thread Cutting Machine Screws and Lock Washers or (2) #12 x 1-1/4" Pan Head All-Purpose Screws and Lock Washers. Tighten the (2) screws on the Hinge End Mounting Bracket.
NOTE: If Key Cylinder is used, Cylinder Spindle must be inserted into Coupling Boss prior to fastening Latch End on Lock Stile.
- Attach Latch End Cover and Hinge End Cover with (6) 8-32 x 1/2" Flat Head Thread Cutting Machine Screws.
- Place Strike on Lock Jamb as shown, (Centered on Latch). Mark and Drill Jamb for (2) 10-24 x 3/4" Pan Head Thread Cutting Machine Screws and Lock Washers or (2) #10 x 1-1/4" Pan Head All Purpose Screws and Lock Washer.
NOTE: 1/8" Spacer must be used under Strike on Frame. Use extra Spacers provided if required.

OPERATING INSTRUCTIONS

TO UNLOCK DOOR USING CYLINDER KEY:

Turn Key approximately 1/4 Turn in either direction and open door, return Key to center and remove.
NOTE: Cylinder Key **WILL NOT** dog unit. Dogging is from inside with Hex Dogging Key only.

DOGGING USING DOGGING KEY:

Fully depress Touch Bar and hold. Using Hex Dogging Key **push** in Dogging Device and Turn **Clockwise** approximately 1/2 Turn.

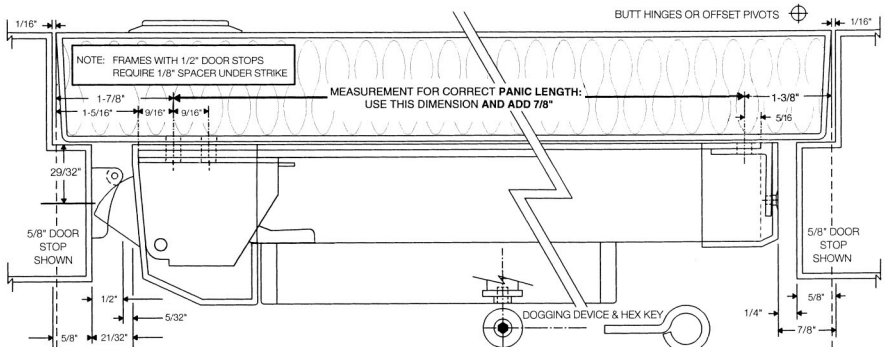
TO RELEASE DOGGING KEY DOGGING:

Hold Touch Bar down. Using Hex Dogging Key **push** in Dogging Device and Turn **Counterclockwise** approximately 1/2 Turn. Dogging will be released.

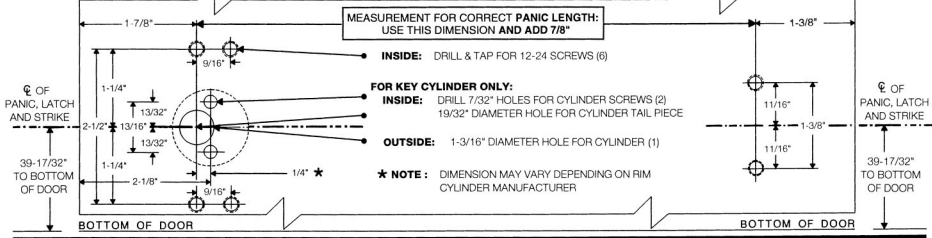
INSTALLATION INSTRUCTION

HOLLOW METAL OR WOOD DOORS

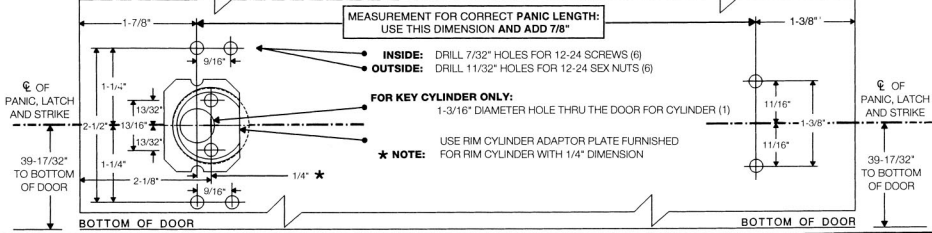
LHRB DOOR SHOWN (RHRB OPPOSITE)



HOLLOW METAL DOORS – WITH REINFORCEMENT



HOLLOW METAL AND WOOD DOORS – WITHOUT REINFORCEMENT



HOLLOW METAL DOORS – WITH REINFORCEMENT INSTALLATION INSTRUCTIONS

- Determine hand of door and prepare inside face of Lock and Hinge Side of door as shown.
- NOTE: For Key Cylinder Only**
 If Key Cylinder is to be used, prepare inside and outside face of Lock Side of door as shown. Cut Spindle of Rim Cylinder to project thru the door 5/32". Install Rim Cylinder and secure with (2) 12-24 Filler Head Machine Screws. Cut off excess Screw Length at break-off points as required.
- Measure for correct Panic length. Measure distance from centerline of mounting holes on Lock and Hinge Side of door as indicated **AND ADD 7/8"**. Mark the measurement on the back of the Panic from Latch End towards the Hinge End to be cut. Stuff a rag in the end of the Back Channel prior to cutting off excess length so that metal chips will not get into the mechanism. Protect the area to be cut and then cut to correct length. Deburr inside and outside edges of cut pieces.
- Drill (2) clearance holes for 12-24 Machine Screws in Hinge End of Back Channel as indicated. Attach Hinge End of Panic and Hinge End Mounting Bracket **LOOSELY** on Hinge Side with (2) 12-24 x 1" Pan Head Thread Cutting Machine Screws and Lock Washers or (2) #12 x 1-1/4" Pan Head All-Purpose Screws and Lock Washers.
- Attach Latch End on door with (4) 12-24 x 1" Pan Head Thread Cutting Machine Screws and Lock Washers or (4) #12 x 1-1/4" Pan Head All-Purpose Screws and Lock Washers. Tighten the (2) screws on the Hinge End Mounting Bracket.
NOTE: If Key Cylinder is used, Cylinder Spindle must be inserted into Coupling Boss prior to fastening Latch End on door.
- Attach Latch End Cover and Hinge End Cover with (6) 8-32 x 1/2" Flat Head Thread Cutting Machine Screws.
- Place Strike on Lock jamb as shown, (Centered on Latch). Mark and Drill Jamb for (2) 10-24 x 3/4" Pan Head Thread Cutting Machine Screws and Lock Washers or (2) #10 x 1-1/4" Pan Head All-Purpose Screws and Lock Washers.
NOTE: Use Spacers provided if required.

OPERATING INSTRUCTIONS

TO UNLOCK DOOR USING CYLINDER KEY:

Turn Key approximately 1/4 Turn in either direction and open door, return Key to center and remove.
NOTE: Cylinder Key **WILL NOT** dog turn. Dogging is from inside with Hex Dogging Key only.

DOGGING USING DOGGING KEY:

Fully depress Touch Bar and hold. Using Hex Dogging Key **push** in Dogging Device and Turn **Clockwise** approximately 1/2 Turn.

TO RELEASE DOGGING KEY DOGGING:

Hold Touch Bar down. Using Hex Dogging Key **push** in Dogging Device and Turn **Counterclockwise** approximately 1/2 Turn. Dogging will be released.

HOLLOW METAL AND WOOD DOORS – WITHOUT REINFORCEMENT INSTALLATION INSTRUCTIONS

- Determine hand of door and prepare inside face of Lock and Hinge Side of door as shown.
- NOTE: For Key Cylinder Only**
 If Key Cylinder is to be used, prepare inside and outside face of Lock Side of door as shown. Cut Spindle of Rim Cylinder to project thru the door 5/32". Install Rim Cylinder and secure with (2) 12-24 Filler Head Machine Screws. Cut off excess Screw Length at break-off points as required.
- Measure for correct Panic length. Measure distance from centerline of mounting holes on Lock and Hinge Side of door as indicated **AND ADD 7/8"**. Mark the measurement on the back of the Panic from Latch End towards the Hinge End to be cut. Stuff a rag in the end of the Back Channel prior to cutting off excess length so that metal chips will not get into the mechanism. Protect the area to be cut and then cut to correct length. Deburr inside and outside edges of cut pieces.
- Drill (2) clearance holes for 12-24 Machine Screws in Hinge End of Back Channel as indicated. Attach Hinge End of Panic and Hinge End Mounting Bracket **LOOSELY** on Hinge Side with (2) 12-24 x 1" Pan Head Thread Cutting Machine Screws and Lock Washers with 12-24 x 1-1/16" Sex Nuts or (4) #12 x 1-1/4" Pan Head All-Purpose Screws and Lock Washers.
- Attach Latch End on door with (4) 12-24 x 1" Pan Head Thread Cutting Machine Screws and Lock Washers with 12-24 x 1-1/16" Sex Nuts or (4) #12 x 1-1/4" Pan Head All-Purpose Screws and Lock Washers. Tighten the (2) screws on the Hinge End Mounting Bracket.
NOTE: If Key Cylinder is used, Cylinder Spindle must be inserted into Coupling Boss prior to fastening Latch End on door.
- Attach Latch End Cover and Hinge End Cover with (6) 8-32 x 1/2" Flat Head Thread Cutting Machine Screws.
- Place Strike on Lock jamb as shown, (Centered on Latch). Mark and Drill Jamb for (2) 10-24 x 3/4" Pan Head Thread Cutting Machine Screws and Lock Washers or (2) #10 x 1-1/4" Pan Head All-Purpose Screws and Lock Washers.
NOTE: Use Spacers provided if required.