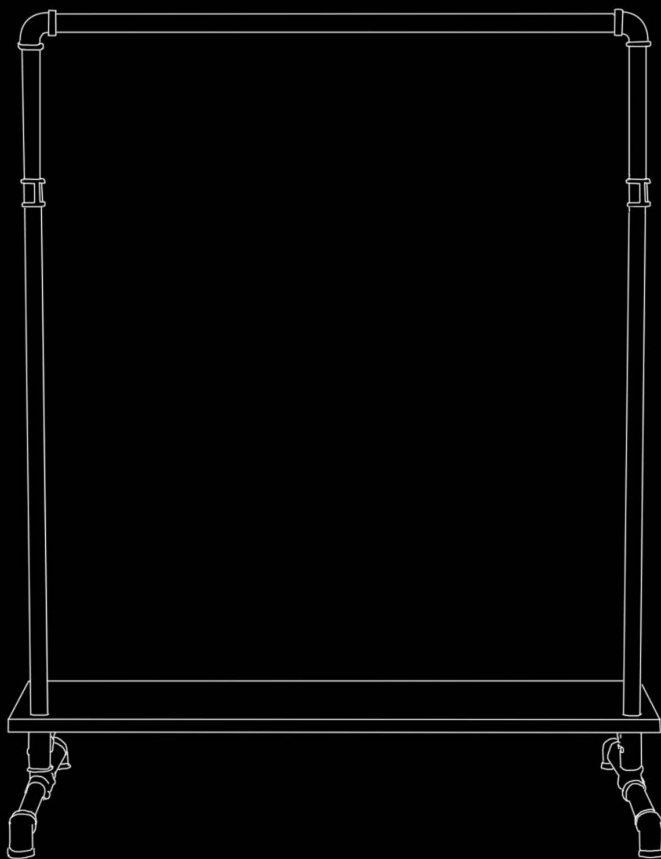


Anleitung / Manual

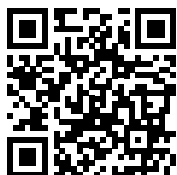
OSKAR OAK

DE + US

P-01-041



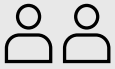
HOW-TO
VIDEO



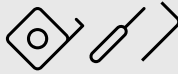
pamo.



! Warnhinweise beachten!
Observe warnings!



2 Personen /
2 persons



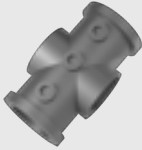
Werkzeug /
Tools



Unterlage verwenden /
Use Underlay



E X 8



P X 2



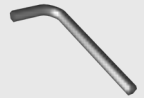
F X 2



O X 2



G X 6



Q 4mm



X20 X 2



R X 1



X25 X 6



X93 X 3

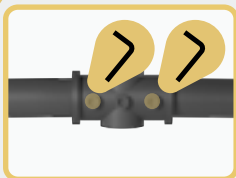
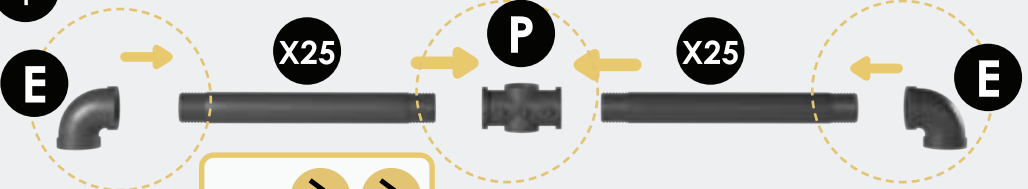
Bitte prüfen Sie alle Teile auf Transportschäden oder Macken.

Sollten Sie Transportschäden entdecken ersetzen wir sofort die entsprechende Teile.

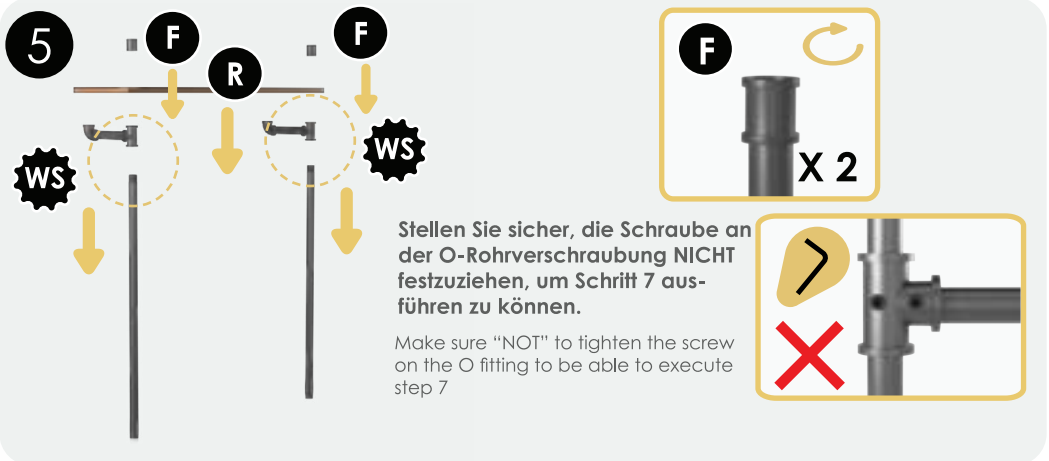
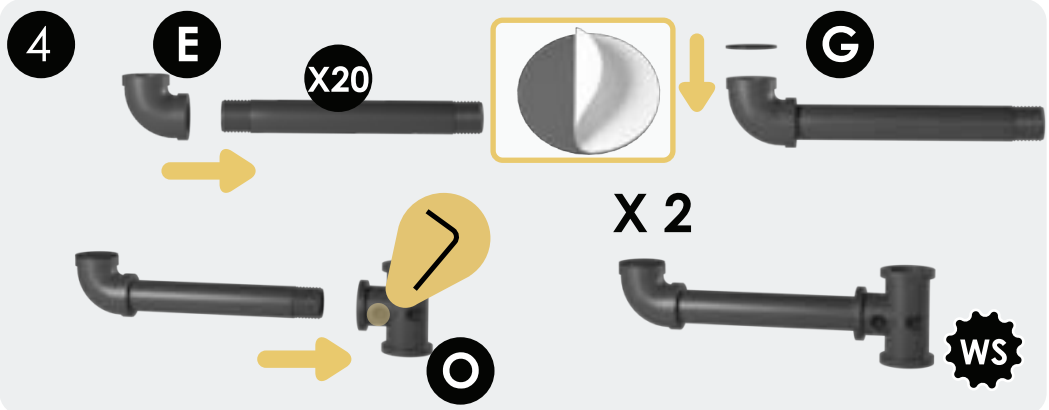
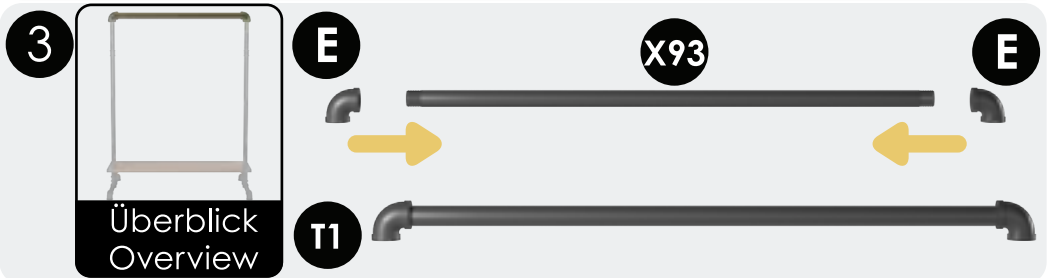
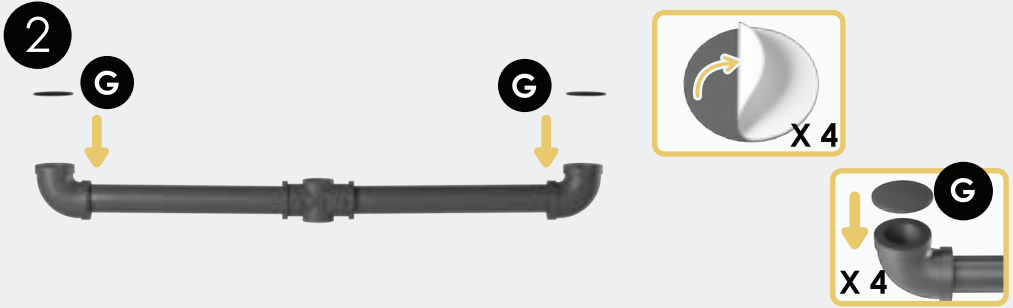
Please check the parts for transport damage or scratches.

If you find any damage, contact us and we will replace the defective parts.

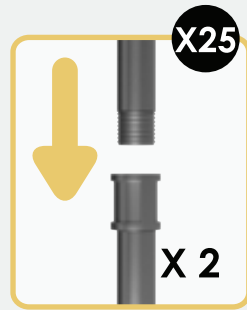
1



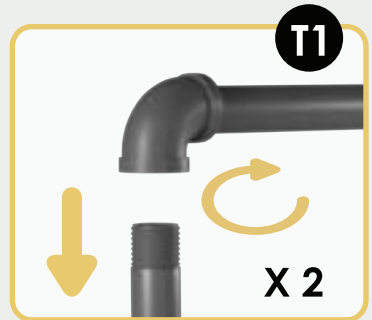
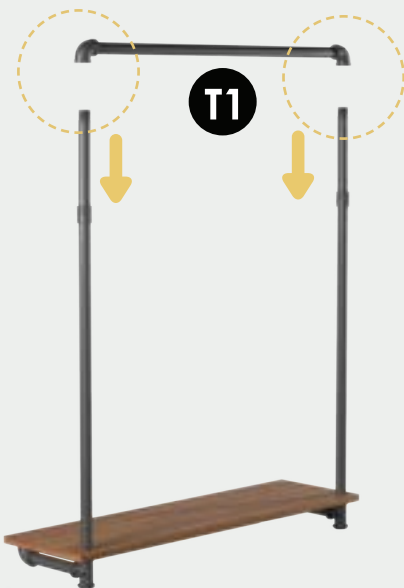
X 2



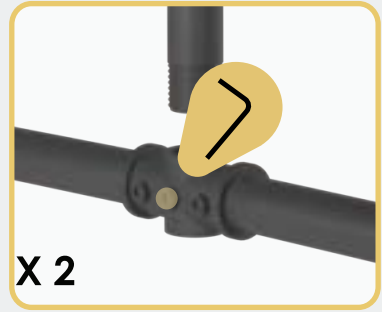
6



7



8



9



!

Wichtige Hinweise Important notes

Nur zur Nutzung als Kleiderstange gedacht.

Intended only for use as a clothes rail.

max. Belastung Boden 20 kg, max. Regalbelastung 50 kg..

max. shelf load 20 kg, max. shelf load 50 kg in total.

Bei unsachgemäßer Nutzung übernimmt SaleLab GmbH keine Haftung oder sonstige Verantwortung für Sach- oder Personenschäden entstehen.

SaleLab GmbH assumes no liability or other responsibility for property damage or personal injury resulting from improper use.

**Viel Spaß mit deinem
pamo.-Produkt!
Enjoy your pamo.-product!**

Kontakt / contact
Wir helfen Dir gerne:
We are happy to help you:

EU

 support@pamo-design.de
 www.pamo-design.de

US

 support@pamo-design.com
 www.pamo-design.com

pamo.

Europe

SaleLab GmbH | Haydnstraße 28
88284 Wolpertswende | DE

USA

SaleLab Inc | 444 Brickell Avenue
Suite 700 | Miami, FL 33131 | USA