

GIN-Knives
in Z-SHAPE Handle



GIN

Z-SHAPE
RELAX *DBGM*

GIN-Knives

in **Z-SHAPE** Handle

The safe surgical access to the periodontal defect.
For gentle mobilization and detachment of the marginal tissue with horizontal bone loss.

The GIN-Knife ensures an atraumatic mobilization of the mucoperiosteal flap.

Due to the smooth surface and the special shape of the working end, the root surface and all alveolar bone edges can be quickly and easily presented.

The perfect solution accompanying open curettage.

With exchangeable inserts, thread M4 x 0.5.



26.182.38

GIN-Knife #1
straight



26.182.39

GIN-Knife #2
curved

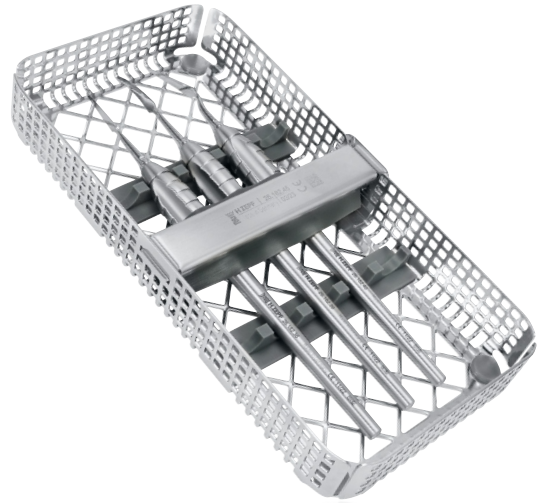


26.182.40

GIN-Knife #3
distal bending

26.182.45

GIN-Knife Kit
incl. 1/3 Washtray
REF 85.182.00.



Z-SHAPE
RELAX **DBGM**

AESTHETIC IS THE RESULT