



OBSESSED WITH HIGH RESOLUTION

HTF PASSIVE SOUNDBARS

Today's sleek flat panel televisions demand an audio solution that not only complements their stylish good looks but also faithfully reproduces the detailed high resolution audio from today's movie soundtracks. The solution is the KEF HTF soundbars - a perfect combination of incredible audio performance and stylish good looks.

Delivering on the promise of KEF's legendary sound quality and rock solid sonic imaging, the HTF soundbars produce the home theatre's front soundstage (Left, Centre, and Right) from a single aluminum enclosure with performance that rivals three discrete loudspeakers.

KEF HTF8003 Home Theatre LCR Uni-Q Soundbar



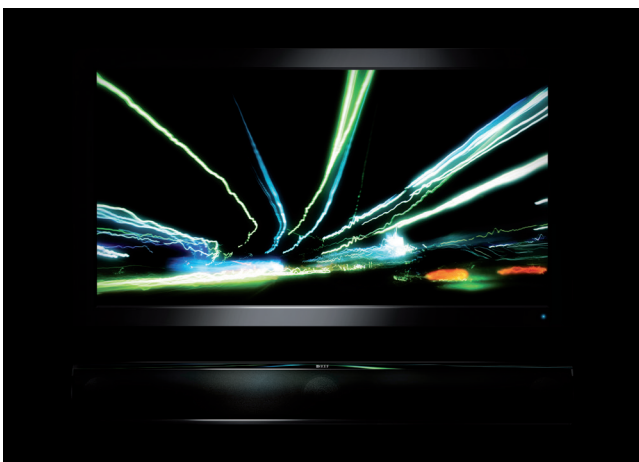
Each of the three awe-inspiring channels is comprised of a remarkable three-way speaker system containing a KEF Uni-Q driver with 75mm mid-bass driver and 15mm HF driver; a 75mm woofer, and a 75mm ABR for extended bass output. KEF's patented Uni-Q driver configuration places the tweeter in the acoustic center of the bass/midrange cone. This creates a single focused audio source that disperses the sound evenly throughout the room. Sized to fit Flat Panel TV 42in. and larger.

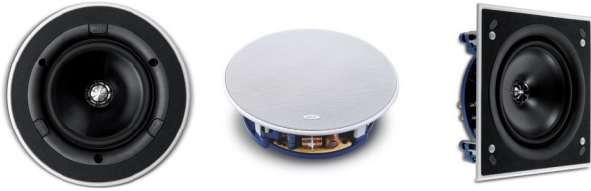
KEF HTF7003 Home Theatre LCR Soundbar



Each of the three channels contains dual 50mm woofers and a 19mm HF driver. Sized to fit Flat Panel TV 32in. and larger.

The KEF HTF Soundbars come supplied with both a wall mount bracket and a table stand which makes them an elegant partner to any flat panel, no matter if mounted on a wall or sitting on a credenza.





KEF offers a wide selection of rear channel speakers to complete your home theatre; be it a square or round in-ceiling speaker or a rectangular in-wall speaker.

For subwoofers there is the 7" thin T2 sub, the high gloss compact Kubel or the front firing C4.



Courtesy of Liberty Coach

When both the KEF KHT Soundbar and flat panel TV are mounted to a swing arm bracket, the acoustic image will stay perfectly aligned to the video image, when the bracket is pivoted.

SPECIFICATIONS

Model	HTFb003 Front Speaker	HTF7003 Front Speaker
Type	Closed box - 3 way	Closed box - 2 way
Driver units	1x 75mm (3in.) Uni-Q array with 15mm (0.6in.) Aluminum HF 1x 75mm (3in.) LF 1x 75mm (3in.) ABR per channel	1x 19mm (0.75in.) Aluminum HF 2x 50mm (2in.) LF unit per channel
Crossover frequency	2.8kHz	2.8kHz
Sensitivity (2.83V/1m)	87dB	85dB
Frequency response (+/-3dB)	70Hz - 22kHz	120Hz - 22kHz
Maximum output (SPL)	106dB	106dB
Impedance	8Ω	8Ω
Magnetic shielding	Yes	Yes
Power handling	100W	100W
Weight	6kg (13.2lbs)	2.1kg (4.6lbs)
Dimensions (H x W x D)	121 x 962 x 81 mm (4.7 x 37.8 x 3.1in.)	81 x 785 x 61 mm (3.1 x 30.9 x 2.4 in.)
Finish	High gloss black	High gloss black

Visit: www.kef.com for more about KEF and its products.

KEF reserves the right, in line with continuing research and development, to amend or change specifications. E&OE.