

User Manual
USB-C KVM Switch

Thanks for buying our USB-C KVM switch. It allows you to access two computers /laptops/mobile phones from a single USB keyboard, USB mouse and monitor console. They are widely used in security exchange market, multimedia conference room, etc...

◆ Product Features:

- One USB console controls 2 computers /laptops/mobile phones.

Switch Mode:

1. Wire remote push button switch
2. Keyboard Hot-Key switch
3. click mouse switch
4. button switch on front panel

HDMI output supports resolution up to 4Kx2K@ 60Hz

- Multiplatform support: Windows 10, Mac OS 10, Android 9.0 or above
- Support Hot plug & play
- Support thunderbolt 3 and EDID
- Support auto detection, if one device is powered off, the switch will automatically switch to the next powered-on device (The default is in closed state, if you want to open it, please read the below setting operation instructions).
- With memory function in case of power-down
- Auto Scan Mode for monitoring all computers /laptops/mobile phones.
- With USB2.0 Hub and stereo audio

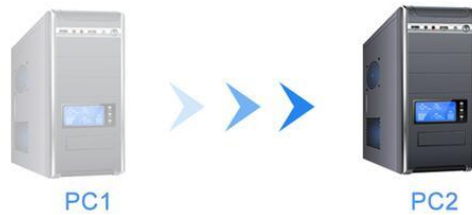
◆ Connection Diagram:



1. Turn off all devices;
2. Connect your devices to the KVM Switch with proper cables;
3. Plug your mouse and keyboard into correspondent USB mouse and keyboard port on the front of panel. Connect your Monitor to the KVM;
4. Plug in your speaker if needed;
5. Turn on the KVM switch;
6. Turn on all your devices.

◆ Switch Modes:

- **Button Switch:** Switch to any port by pressing a button on front panel.

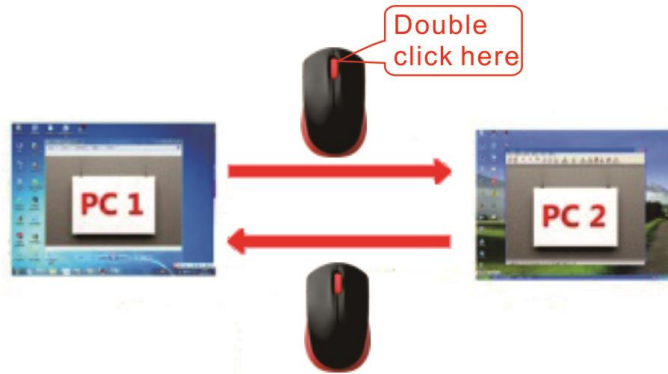


- **Wire Remote Push Button Switch:** Switch to any port by remote button after you plug it to the KVM.



- **Click mouse Switch:**

Double click the mouse middle button (within 1 second).



- **Keyboard Hot-key Switch** : For example, double click the right **【Ctrl】** → **1** or **2** → **【Enter】**

◆ Turn on/off mouse switch and hotkey switch

(Default is turn on, 'Hotkey on' light is green)

1. When hotkey switch is turned on ('Hotkey on' light is green), double click right **【Ctrl】** → **【M】** → **【Enter】**, after hearing 'beep' sound, mouse switch function was turned off, mouse port of KVM changed to USB HUB function.
2. When hotkey switch is turned on, click right **【Ctrl】** → **【K】** → **【Enter】**, after hearing 'beep' sound, hotkey on light will turn off, and keyboard switch will turn off, keyboard port of KVM changed to USB HUB function.
3. When mouse switch and keyboard switch are turned off, and you need to use hotkey switch, you can press 'Hot key on/off' button, and K/M switch will restore ('Hot key on' light turns on).

Notes:

- You can turn on/off this function based on current needs;
- If any gaming mouse and multifunction Keyboard are not working, you need to turn off 'Hot key on/off' button, and the issue will be resolved.



◆Hotkey Setting:

Default hot-key is the right 【Ctrl】 . If use the right 【Ctrl】 and this is creating conflict with other hot-key, you can change she setting to 【Num lock】 key, or 【Scroll Lock】 .

For example: Double click the right 【Ctrl】 → 【Num lock】 → 【Enter】

| | |
|--|-------------------------------------|
| Double click the right 【Ctrl】 → 【Num lock】 → 【Enter】 | Hotkey will change to 【Num lock】 |
| Double click the right 【Ctrl】 → left 【Ctrl】 → 【Enter】 | Hotkey will change to left 【Ctrl】 |
| Double click the right 【Ctrl】 → 【Scroll Lock】 → 【Enter】 | Hotkey will change to 【Scroll Lock】 |
| If the hotkey is changed to 【Scroll Lock】 , and you want to change it to the left 【Ctrl】 , Then double click 【Scroll Lock】 → the left 【Ctrl】 → 【Enter】 | |

◆Keyboard hot-key Operation:


| | |
|---|--|
| Double click the right 【Ctrl】 → n → 【Enter】 | The KVM can switch to the equipment you choose. |
| Double click the right 【Ctrl】 → 【S】 → 【Enter】 | Turn on/off the Anto-scan function, You aslo can press the scan on front panel |
| Double click the right 【Ctrl】 → 【S】 → n → 【Enter】 | Set the scan interval, Can set to 8-999 seconds (The system defaults to 8 seconds) |
| Double click the right 【Ctrl】 → 【T】 → 【Enter】 | Turn on/off the detection function (default is off) |
| Double click the right 【Ctrl】 → 【R】 → 【Enter】 | Reset the KVM switch to solve the keyboard and mouse freeze |
| Double click the right 【Ctrl】 → 【TAB】 → 【Enter】 | Restore the hotkey to the default --- right 【Ctrl】 |
| Double click the right 【Ctrl】 → 【ESC】 → 【ESC】 → 【Enter】 | Reset factory setting for KVM switch to solve the problem of keyboard and mouse |


Notes:

- The n stands for the computer's Port ID number (1 or 2) or Number 8 to 999.
- When the auto scan function is activated, you can press any key on the panel, and auto scan function turns off automatically.
- If the computer enters into sleep mode. You must to press the compter's power button to wake it up, we recommend the users turn off "Sleep mode" function on the PC.
- Orange LED lightning: The current opeating port

◆Sound Card Settings (Optional):

HDMI Sound Settings

Right click  on the desktop taskbar, select “Sounds” from the popup screen, Select Playback as shown in Figure A. Then select the ‘HDMI Output’, right click and select “Set as Default Device” as shown in Figure B. It should now display

selected status  , which indicates successful setup as shown in the Figure C.

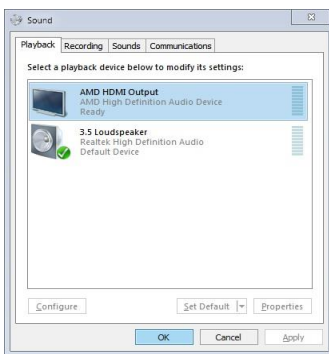


Figure A

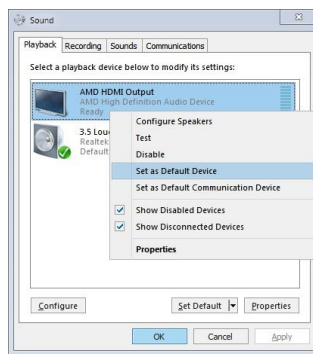


Figure B

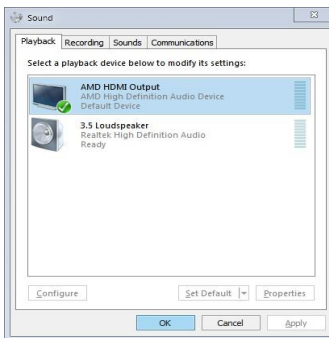


Figure C