

Product Name Pull Out and Swivel 24U 500x480mm. Threaded Profiles.

Features

- Pull Out and Swivel 19" rack solution with high quality 14 gauge steel construction.
- Threaded profiles for M6 screws.
- Rollarak assembly consists of four profiles.
- Top & base.
- Available in sizes 18U – 42U 500x480mm.
- The base requires a 570mm deep mounting space.



Accessories

Rollarak Side Panels 480mm Deep. Size 24U (Pair).

Fixed Vented Shelf 450x465mm incs. cable management.

Blanking Panels.

Black AVRack Bolts Pack of 100



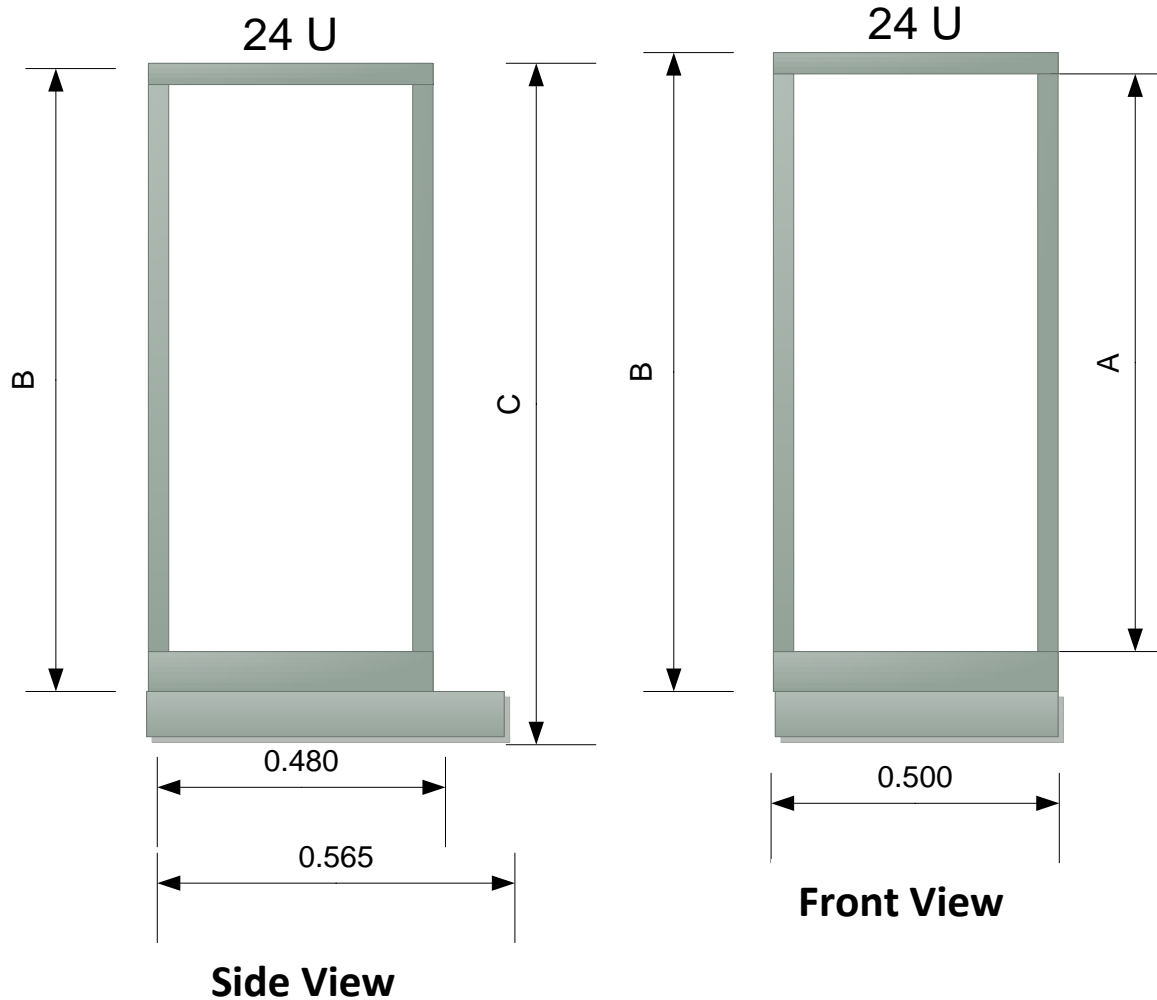
Specifications

- Pulls out and swivels to provide access to wiring and components.
- Choice of profile length.
- Eases equipment installation.
- Shortens installation & service time.
- Available from 18U to 42U.
- Rack locks in swivel position.
- Heavy duty slide allows smooth rollout.
- Pulls out and Swivels for equipment servicing.

Front Courtesy Panel



Dimensions



Product	A Useable Height		B Overall Height	C Height With Base
	U	mm	mm	mm
18-U-55	18	800.10	889.00	956.00
21-U-55	21	933.45	1022.35	1089.35
24-U-55	24	1066.80	1155.70	1222.70
27-U-55	27	1200.15	1289.05	1356.05
33-U-55	33	1466.85	1555.75	1622.75
39-U-55	39	1733.55	1822.45	1889.45
42-U-55	42	1866.90	1955.80	2022.80