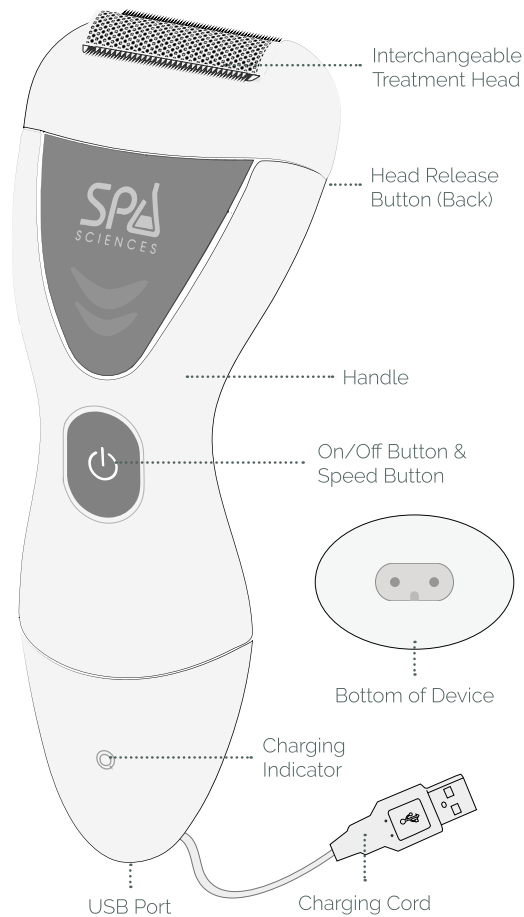




A Closer Look



Charging



BEFORE FIRST USE

ELLA is cordless and rechargeable. Before use, charge fully for 8 hours. ELLA can run up to 45 minutes on a single charge.

CHARGING

To recharge, insert the included USB Cord into the port on the bottom of the ELLA. **The connection may be tight the first couple of times that you connect ELLA to the USB Cord. It will loosen after 2-3 uses.**

Then connect the USB end of the Charging Cord to (i) a USB port in a computer or other USB power supply, or (ii) a wall adapter and then plug into an electrical outlet.

When the ELLA's battery needs charging, the Power Indicator light will turn red. If the device is fully discharged the device will power off.

As the battery charges, the red light will turn to green when the device is fully charged.

Recharge the ELLA only as needed. DO NOT overcharge which can shorten the battery life. Disconnect the Charging Cord when not charging the device. **ELLA should be powered OFF while charging.**

Do not charge ELLA for more than 24 continuous hours.

Usage Guide



Epilator Head



Coarse PEDI Head



Fine PEDI Head



Lady Shaver Head



Epilator Guard



Small cleaning brush

EPILATION:

1. Start with clean dry skin. Attach the Epilator Head and hold the skin taut (to prevent the skin from being pinched). The Epilator Guard, narrows the epilating area for targeted hair removal in sensitive areas such as the underarms and bikini line.
2. Power on your ELLA by pressing the ON/OFF button. Hold ELLA at an angle to your skin and lightly glide over the skin's surface in which you want to epilate.
3. Be careful when using the epilator on sensitive areas. Redness or a slight irritation can appear after first use.
4. Apply a moisturizing cream approx. 30 minutes after epilating.

LADY SHAVER:

1. Start with clean dry skin. Attach the Lady Shaver Head.
2. Power on your ELLA by pressing the ON/OFF button. Hold ELLA to your skin at a right angle and lightly glide over the skin's surface against the direction of hair growth.
3. Be careful when using the lady shaver on sensitive areas. Redness or a slight irritation can appear after first use.
4. Apply a moisturizing cream approx. 30 minutes after using the lady shaver.

Usage Guide

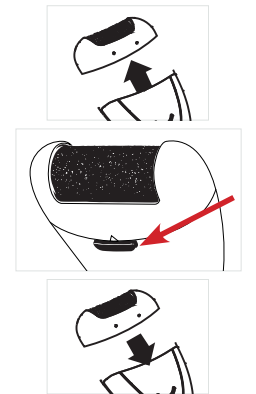
READY TO USE:

PEDI:

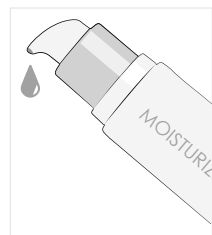
1. Start with clean/dry feet.
2. Attach the Coarse Treatment Head to remove the bulk of dead, dull and callused skin on the feet.
3. Power on your ELLA by pressing the ON/OFF button. Hold ELLA in an upward direction and make contact with the areas you wish to smooth. Rock ELLA back and forth and side to side over hardened callused areas of skin for 3-5 seconds at a time.
4. With ELLA powered OFF, remove the Coarse Treatment Head and attach the Fine Treatment Head.
5. Repeat step #3.

Changing Heads

1. Make sure that the unit is powered OFF before switching the Treatment Heads.
2. To remove a Treatment Head, press the Release Button with one hand while lifting the Treatment Head away from the top of ELLA.
3. To attach a Treatment Head, gently press the Treatment Head into ELLA until it snaps into place.



Expert Advice



- 1. What is the best way to get started with epilation?** When using the device for the first time, we advise you to test on an area with only light hair growth. This helps you to get accustomed to the epilation process.
- 2. What's the best after treatment to maintain my skin's smoothness?** Rinse away excess dead skin & hair and apply a lite moisturizer to seal in skin-smoothing benefits.
- 3. Can I use ELLA on other parts of my body?** Yes. ELLA is specifically designed for use on the body (epilator & lady shaver heads) and callused areas of the feet (pedi treatment head).

**1-2
WEEKS**



- 4. How often should I use ELLA?** ELLA pedi treatment head is ideal to use every 1-2 weeks. Check your feet for rough or callused areas before using. The ELLA epilator and lady shaver treatment heads are recommended to perform as needed based on hair growth.

Expert Advice

- 5. Is ELLA better used wet or dry?** Dryer skin will exfoliate better with regards to the pedi treatment head, but this is personal preference. Epilation is easier performed after a bath or shower on dry skin.
- 6. What is the best way to clean the ELLA Heads?** ELLA Treatment Heads are water resistant. After a treatment you may detach the Treatment Heads from ELLA; use the enclosed brush to clean away build-up of callused skin/hair and rinse clean. Allow Treatment Heads to dry before reattaching to ELLA.
- 7. What is the best time to epilate?** Sometimes after epilation we are left with skin irritation. Due to this, it is recommended that the best time to epilate is in the evening after a warm shower or bath. The water helps with circulation and makes your skin less sensitive. You will wake up in the morning with smooth skin.

Warnings & Warranty

Warnings:

- ELLA is to be used on uncompromised areas on the feet and body. Avoid use in treatment areas where any of the following is present: any area with a sore or ulcer present, that was recently treated with chemical peels or lasers, over raised areas of skin such as lesions, moles, growths and skin tags. Avoid treatment areas where cancer is present or suspected to be present. **DO NOT** use over compromised skin. Compromised skin may include but is not limited to burns, areas of healing, blisters, psoriasis, abrasions, cuts and sores.
- ELLA pedi treatment heads are specifically designed for use on the feet. **DO NOT** use on other areas of the body. ELLA epilator & lady shaver treatment heads are specifically designed for use on the body.
- After a pedi treatment, it is normal to feel a slight tingling sensation. This sensation usually subsides after an hour or two. If you feel any burning, irritation or uncomfortable sensation discontinue use and consult a physician.
- If you have any medical concerns about using ELLA, please consult your doctor before use.
- ELLA is not to be used on children. Children should not play with the device.
- If any of the components are damaged (ELLA Device Handle, Treatment Heads, USB Cord), **DO NOT** use. **DO NOT** attempt to open or service components. Email Spa Sciences customer services at customerservice@spasciences.com.
- DO NOT** share Treatment Heads for sanitary reasons.

Warnings & Warranty

- ELLA is intended only for use described in the Operating Manual. Email Spa Sciences at customerservice@spasciences.com with any questions.
- DO NOT** charge or store ELLA anywhere that it can fall or be dropped into water. If the ELLA Device Handle, USB Cord falls into water, **DO NOT** reach for it as electrocution may occur. IMMEDIATELY, unplug from the wall. Before charging always check to make sure all components are free from water.
- Only use the supplied USB Cord to charge your ELLA Device Handle.

Disclaimer: Users of ELLA do so at their own risk. Neither Spa Sciences nor any retailer partners assume any liability or responsibility for injuries or damages, physical or otherwise, resulting directly or indirectly from using ELLA This Simple Quick Start Guide may be changed at any time by Spa Sciences. Spa Sciences reserves the right to make changes to this manual without obligation to notify any person of such changes or revisions. The complete Operating Manual is available online at www.ellamanual.com.

Warranty:

Your warranty is not effective unless you register the Product within 90 days of purchase. To register go online to www.warrantyspasciences.com and complete the information required for registration.

For a period of two (2) years from the date of purchase, Spa Sciences (the "Company") warrants the ELLA 3-in-1 Wet/Dry Epilation, Pedi & Lady Shaver System (the "Product") against damage, defects or failure resulting from ordinary consumer use under normal home conditions according to the instructions included with the Product (a "Covered Defect"). This warranty DOES NOT include damage, defects or failure caused by misuse or improper care of the Product; impact or insertion of foreign objects into or on the Product; application of harmful chemicals or abrasives to the Product; failure to follow manufacturer's instructions;

normal wear and tear; alteration or overuse of the Product; or any professional or commercial use of the Product. If there is a Covered Defect during the two (2) years warranty period the Company agrees to exchange the Product with a new equivalent Product. This is the sole remedy available for breach of this limited warranty. Any claim for breach of this limited warranty must be commenced within two (2) years following the original purchase. This limited warranty applies only to a purchase of the Product from or an authorized reseller, is valid for the original end user of the Product only and cannot be transferred under any circumstances.

THE PROVISIONS OF THE FOREGOING WARRANTIES ARE IN LIEU OF ANY OTHER WARRANTY, WHETHER EXPRESS OR IMPLIED, WRITTEN OR ORAL (INCLUDING ANY WARRANTY OF MERCHANTABILITY OR FITNESS FOR A PARTICULAR PURPOSE). IN NO EVENT SHALL THE COMPANY BE LIABLE FOR ANY SPECIAL, INCIDENTAL, CONSEQUENTIAL, PUNITIVE, OR INDIRECT DAMAGES BASED UPON ANY LEGAL THEORY. SOME STATES DO NOT ALLOW LIMITS ON WARRANTIES, OR ON REMEDIES FOR BREACH IN CERTAIN TRANSACTIONS. IF APPLICABLE LAW DOES NOT PERMIT THE DISCLAIMER OF IMPLIED WARRANTIES, THEN THE DURATION OF SUCH IMPLIED WARRANTIES, ARE EXPRESSLY LIMITED TO THE DURATION OF THE EXPRESS LIMITED WARRANTY SET FORTH HEREIN.

Additional Info

The entire operating manual including safety, care and warranty information is available at www.ellamanual.com

Email customer service at customerservice@spasciences.com

© 2020 Spa Sciences. All rights reserved.