



PRODUCT DESCRIPTION

1 »

\ User Guide \

Thank you for choosing Balanced Armature & Moving Coil Earphone With Double Microphone designed by UiiSii! To better experience this product, please read the Quick Start Guide carefully before using and properly manage it.

/ Product Specifications /

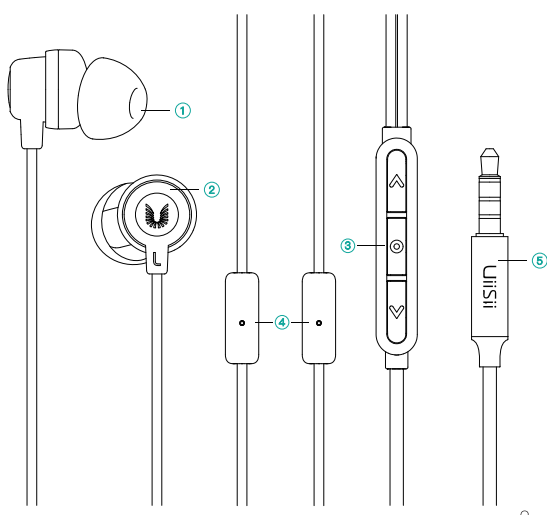
Speaker size	10mm
Frequency range	10-40000Hz
Cable length	120cm
Sensitivity	104±3dB
Impedance	16Ω
Plug pin	3.5mm

1 »

\ Product Information \

■ K8

1. Bullet silicone eartips
2. Metal rear cavity
3. Volume control
4. Microphone
5. 3.5mm plug pin

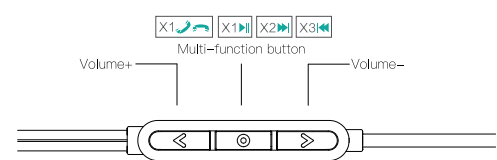


2 »

/ Use Drive-By-Wire Microphone /

■ The audio cable with drive-by-wire microphone built in on the earphones can match your smartphone, music player or tablet.

Functions include:



■ Multi-Function Button:

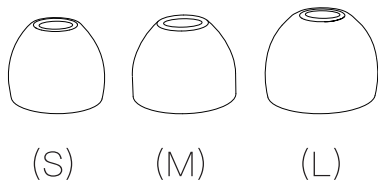
Incoming call status: short press once for answering, long press once for rejecting, and long or short press once for hanging up during a call.

Play music: after running the player, short press once for playing/pausing music, short press twice for next song, short press three times for previous song.

3 »

\ Earplug Selection \

Silicone Eartips



The suitability of the earplugs will affect the sound quality. If it is correctly worn, you can better isolate the outside interfering noise, strengthen bass response, acquire better tonal balance, and allow the earphones to better fit into your ears. Meanwhile, correct wearing will also make you feel more comfortable. As everyone's ear shape is different, UiiSii offers several differently sized earplugs. Trial and error are required to obtain the earplugs that can perfectly match your ear shape. Please find the earplugs that most suit the size and profile of your ear canal in all the earplugs attached to the earphones you have purchased. We recommend you try the smallest earplugs first, and then try the bigger earplugs, until you find the earplugs that fit and are kept in the ear in a not-easy-to-fall and comfortable manner. You can also try different types of earplugs to find the type that suits you most.

4 »

\ Correct Plugging And Removal Of Earplugs \

1. You can slightly wet the earplugs so that they can be easily inserted.
2. Hold the right earphone with your right hand.
3. Pull your right ear upward and backward with your left hand to straighten your ear canal.
4. Carefully insert the right earphone, with the silicone earplug first, so that it can completely seal your ear canal. Properly adjust the ear hook, so that it can completely match your auricle and you can feel comfortable. Do not insert earplugs deeply to make the ear canal feel "being tightly plugged".
5. Repeat this procedure for your left ear.
6. After listening, please remove the in-ear earphones in a rotating way and gradually disconnect the sealing.

■ Responsible Use

Do not use the earphones in unsafe conditions, such as during driving, crossing the street or engaging in any activities that need concentration, or in such environments. Using earphones during driving is not only dangerous, but also illegal in many places, as this will reduce your chance of hearing any sound about your life safety, such as horns of other cars and ambulance sirens. Do not wear the earphones during driving. Instead, you can use the FM transmitter in the car to listen to contents of mobile media devices.

5 »

\ Earplugs Cleaning \

1. It is important to keep the earplugs clean for safe and healthful use. Important notice: please remove the earplugs from the earphones first and then try cleaning the earplugs.
2. Tightly hold the earplugs with one hand, tightly hold the earphones with the other hand, and remove the earplugs from the earphones carefully.
3. Use a piece of wet cloth with warm water and soft soap to clean the dirt and fouling on the earplugs. Do not use powerful detergent.
4. Rinse the earplugs and put them back to the earphones until they are fully dry.
5. Carefully push the earplugs back to the earphones to ensure they are completely reset.

\ Maintenance And Storage \

- It is important to keep the earphones clean for safe and healthful use.
1. Do not wear the in-ear earphones that are dirty.
 2. When the earphones are out of use, please always store it in the clean dry environment provided.
 3. Do not store it with other articles, as it may cause pollution.
 4. Avoid storing it in the environment that is too hot or too cold.
 5. Avoid contact with liquid, and avoid extreme temperature or high humidity environment.
 6. Do not stiffly pull out the earphones from the music player, but hold the terminal plug and pull it out to disconnect it.
 7. Do not dismantle the earphones in an unprofessional and non-standard manner, to avoid partial sound of the earphones.

6 »

\ Frequently Asked Questions \

■ Bad sound quality

1. Please confirm if the earphone plug is fully inserted into the headset jack of the player.
2. Please confirm if the earplugs are tightly plugged.
3. Please try to change a player or music playing application.

■ Bad noise cancellation effect

1. Please confirm if the earplugs cannot be tightly plugged. If so, please replace with the silicone cover of a different size delivered.
2. Please confirm if the earphones are correctly worn.

■ No sound or sound change

1. Please confirm if the current device supports this product.
2. Please try to change a player or music playing application.

7 »