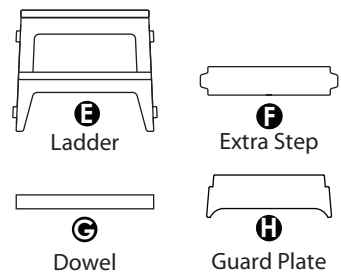
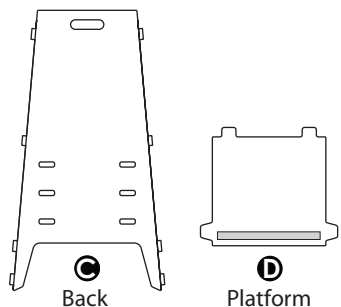
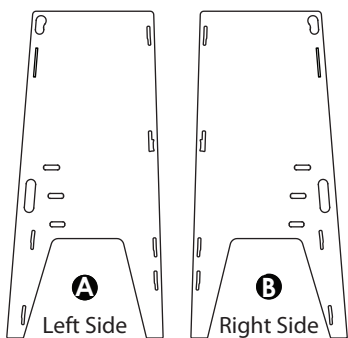


PARTS



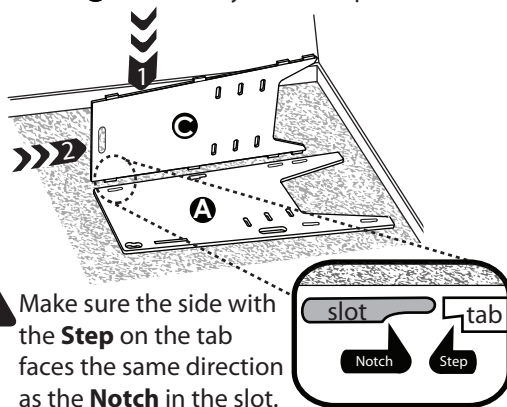
BEFORE YOU START

RECOMMENDED: A rubber mallet can help push pieces together. A hammer can also be used with a scrap piece of wood or a cutting board placed over the surface being hammered for protection.



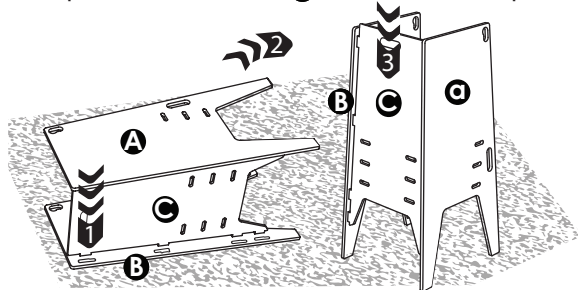
ASSEMBLY INSTRUCTIONS

1 Place **Left Side A** on carpeted floor with slots facing upward. Place tabs of **Back C** into slots and use your weight to push down. Then use rubber mallet or push **Back C** horizontally to lock in place.



! Make sure the side with the **Step** on the tab faces the same direction as the **Notch** in the slot.

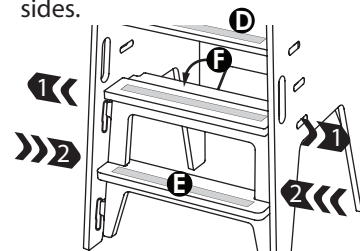
2 Repeat Step 1 with the other side. Place **Side B** on carpet and insert **Back C** tabs into the slots. Then stand up the assembly and push down on **Back C** to lock them into place.



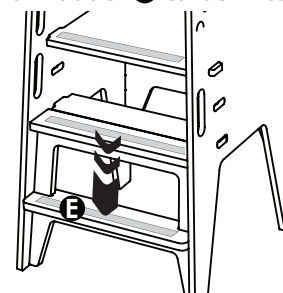
3 Spread sides apart to insert tabs on **Platform D** into slots on **Back C** at desired height. Push sides together to catch tabs on **Platform D** in slots on sides.



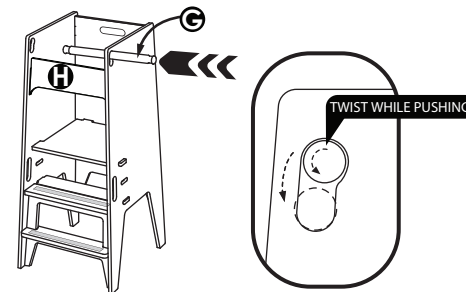
4 Spread sides just enough to insert **Ladder E**. **Unless Platform D is on lowest setting, also insert Extra Step F.** Push sides together, catching tabs on **Ladder E** and **Extra Step F** in slots on sides.



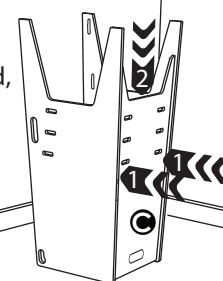
5 Step on **Ladder E** to lock into place.



6 Insert **Guard Plate H** for children under 32" tall. Then slide **Dowel G** into hole from side. Twist **Dowel G** while pushing down to lock into place.



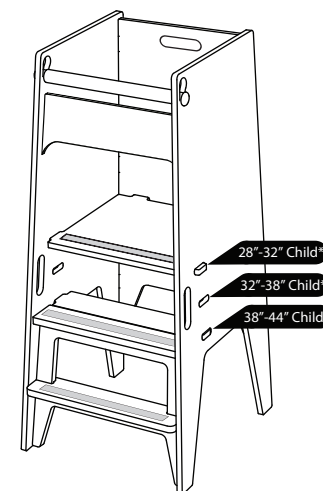
***** **For disassembly,** once parts **E**, **F**, **G** and **H** have been removed, turn the tower upside down and place front legs against a wall. Push near the middle of **C** to unlock tabs, then use your weight to push **C** down to release.



sprout

Simple. Modern. American Made.

Sous-chef Toddler Tower



**Recommendations only. It is the parent or guardian's responsibility to determine the safest platform height for their child*

- !** Adult assembly only
- !** Assemble completely before use
- !** Assemble on a hard floor
- !** Avoid placing the Toddler Tower in sitting water
- !** Do not use this product without Adult Supervision

STOP Frustrated?
Need Help?

Talk to our customer service agent at:
+1 (833) 530-0033
Or email us at:

support@sprout-kids.com
Watch our assembly video at:
sprout-kids.com/tta