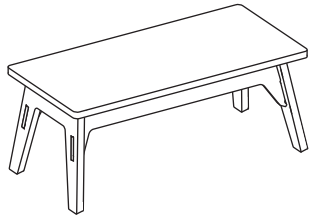




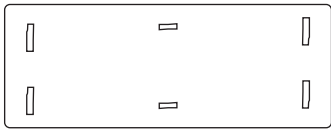
Cultivate Resilience



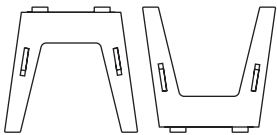
SCHOOL BENCH

PARTS

A Top (1)



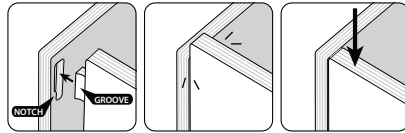
B Legs (2)



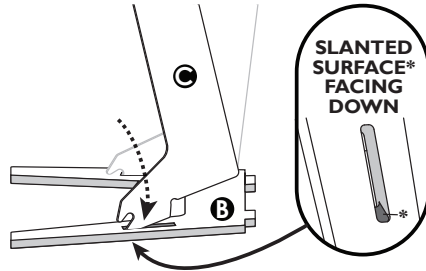
C Braces (2)



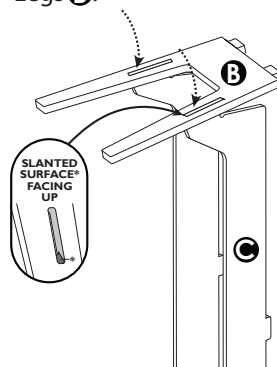
- * 1. With the "Groove" facing the "Notch", push Tab into Slot until it "pops" in place.
- 2. Apply force on part to secure.



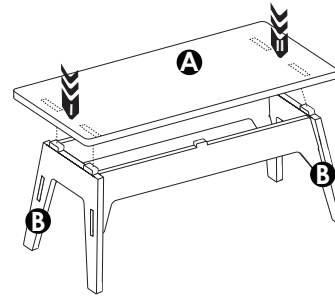
- 1 Lay one of the Legs **B** on the floor, with the slanted surface facing downwards towards the ground. Insert both Braces **C** into the slots.



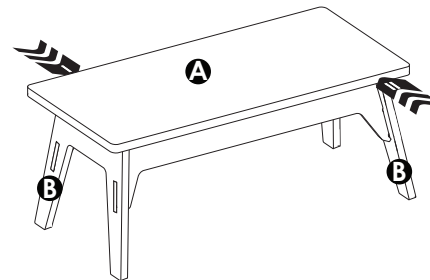
- 2 Install the other Legs **B** by inserting a Leg **B** over Braces **C**. Ensure that the slanted surface on each leg is facing upwards. Repeat with both Legs **B**.



- 3 Carefully flip the bench so that it is upright. Install the Top **A** one side at a time by turning it slightly to pop slots on Top onto tabs of Legs **B**, as shown.



- 4 Lock tabs on Legs **B** fully into place by pushing in Top **A** on each side one at a time, as shown below. Use a soft rubber mallet if needed. Tabs are fully locked when you cannot bump Top **A** out of place.



NEED HELP?



+1 (833) 530-0033
 support@sprout-kids.com
 Available M-F 8-4 MST

WARRANTY

Learn about your warranty.
sprout-kids.com/warranty



CARE

Learn to care for your bench with our detailed guide.
sprout-kids.com/cleaning



Use mild cleaners only



Use a damp cloth & wipe dry

INSPIRE SOMEONE

We'd love to see what you've created! If you choose to share a picture or video with your new table, tag or DM us.

@sprout_kids

SHARE YOUR INSIGHTS

You're invited to join the Sprout Advisory Board and help shape future products.
sprout-kids.com/board

