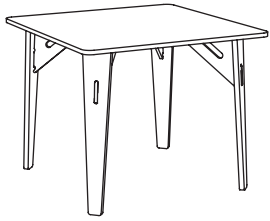




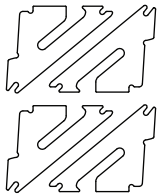
Cultivate Resilience



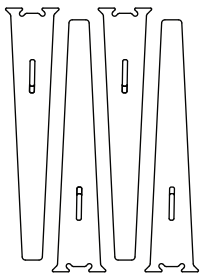
## WORK TABLE

### PARTS

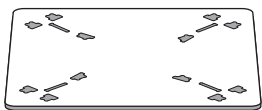
#### A Brackets (4)



#### B Legs (4)



#### C Tabletop

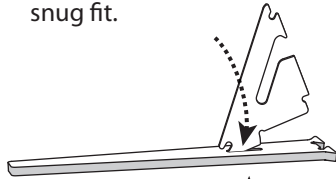


### ASSEMBLY VIDEO ▶

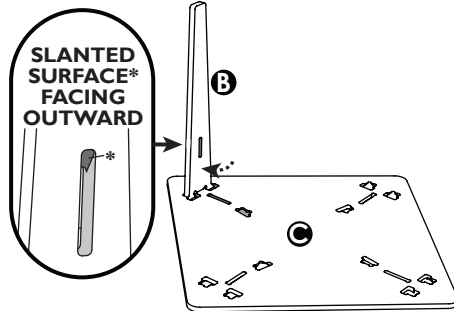
Enjoy the best assembly experience  
[sprout-kids.com/wta](https://sprout-kids.com/wta)



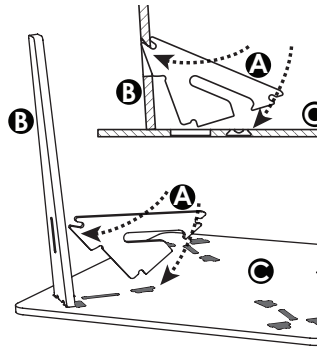
- 1 Insert each bracket into leg in and out 3x. This crushes the wood slightly and ensures a snug fit.



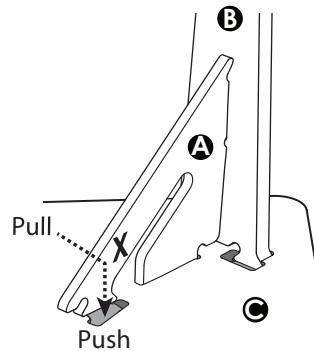
- 2 Remove bracket from leg, and slide end of leg into slot on tabletop.



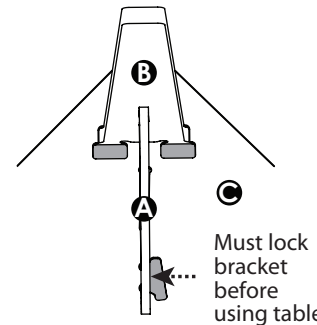
- 3 Insert bracket tip into slot on leg, and rotate down bottom corner.



- 4 Pull tip X of bracket over and push down into slot.



- 5 Push bracket in to lock in place.



- 6 Repeat steps 2-5 for each leg and you're done!

### NEED HELP?



+1 (833) 530-0033  
support@sprout-kids.com  
Available M-F 8-5 MST

### WARRANTY & CARE

Preserve your **5 year warranty**  
(if you purchased from Sprout)  
and prolong the life of your table  
by following our care and cleaning tips.

Learn how to care for your  
table with our detailed guide.  
[sprout-kids.com/cleaning](https://sprout-kids.com/cleaning)



Use mild  
cleaners only



Use a damp  
cloth & wipe dry



Weight limit  
150 lbs

### DESIGNED FOR GROWTH

Learn how to adjust the table  
height for your child's growth.  
[sprout-kids.com/legs](https://sprout-kids.com/legs)



### INSPIRE SOMEONE

We'd love to see what you've created!  
If you choose to share a picture or video  
with your new table, tag or DM us.

@sprout\_kids

### SHARE YOUR INSIGHTS

You're invited to join the  
Sprout Advisory Board and  
help shape future products.  
[sprout-kids.com/board](https://sprout-kids.com/board)

