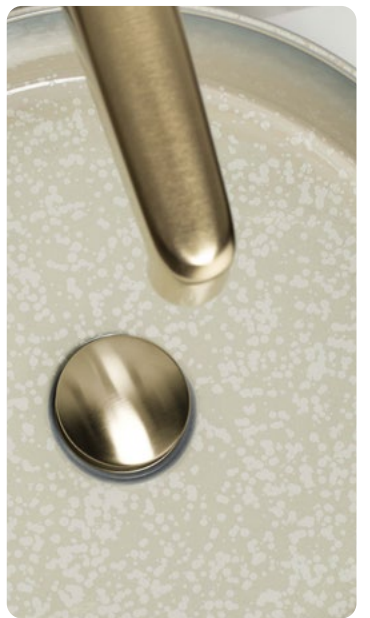
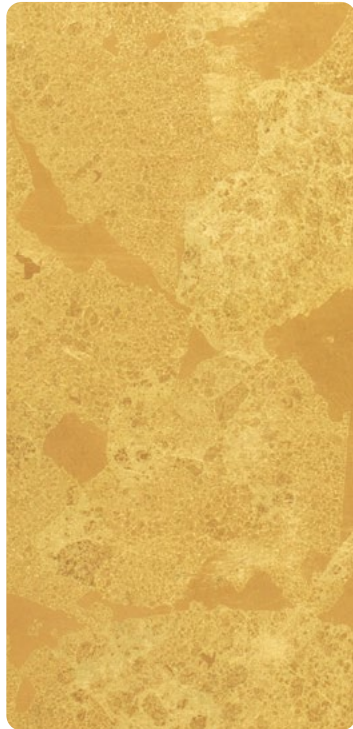
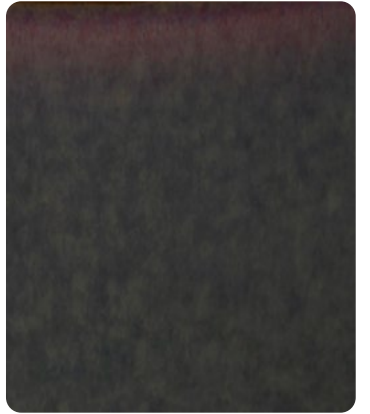


serdaneli
 PARIS
 X
 JAUNE DE CHROME
 LIMOGES



SERDANELI X JAUNE DE CHROME

porcelain enamel basins

Serdaneli and Jaune de Chrome partner to offer a range of porcelain basins with exclusive colours and textures.

Jaune de Chrome has forged a high heat enamel process for tableware which, combined with the purest porcelain, has earned its solid reputation. Located near Limoges, it is twenty-five years worth of expertise that the factory is now bringing to bear on the bathroom.

Jaune de Chrome

Jaune de Chrome is acclaimed and recognised worldwide for its unique dinner sets that adorn the tables of Michelin-starred restaurants.

Enriched by an exceptionally sophisticated craftsmanship, all the manufacturing processes are carried out in-house to deliver a porcelain entirely made and decorated in the Limoges region.

This singular expertise has earned Jaune de Chrome the "Entreprise du Patrimoine Vivant" (Living Heritage Company) label since 2010. Indeed, this label is a distinction awarded by the French Government to honour French companies with excellent craftsmanship and industrial know-how. The factory equally holds the "Porcelaine de Limoges" Protected Geographical Indication, as it manufactures all its products in Saint-Léonard-de-Noblat.

Serdaneli

Like "haute couture", Serdaneli designs bespoke tapware and hardware items drawn from French know-how.

Renowned for using only carefully selected partners, Serdaneli is recognised globally for its collections fully made in France, which are synonymous with quality and exclusivity.

The collection of basins Serdaneli presents to you today reflects a never-ending quest for original materials and unmatched craftsmanship in order to offer its customers ever more exclusive products.

Small Taiga counter top washbasin, "Song Orange" pattern. SERDANELI X JAUNE DE CHROME collection [↑](#)



Patterns

Serdaneli X Jaune de Chrome basins come in 9 different patterns broken down into 2 price ranges:

➤ Enamel patterns:

- Aguirre (PB03)
- Chün Carmin (PB04)
- Noir Pailleté (PB05)
- Bora Bora (PB06)
- Song Orage (PB07)
- Song Perle (PB08)
- Zoulou (PB09)

➤ Precious metal patterns:

- Gold leaves (PB01)
- Platinum leaves (PB02)



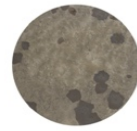
**Feuille de platine
(Platinum leaves)**



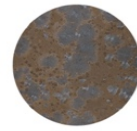
**Feuille d'or
(Gold leaves)**



Noir Pailleté



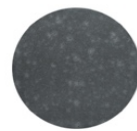
Zoulou



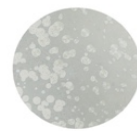
Aguirre



Chün Carmin



Bora Bora



Song Orage



Song Perle

The patterns created by Jaune de Chrome, the factory's own hallmark, offer a wide range of colours and the most exquisite material effects. The handcrafted enamel and the magic of the fire transform the raw material, giving it a distinctive appearance that is both intricate and mineral-rich. Serdaneli X Jaune de Chrome's timeless basins carry intense and sophisticated colours that are sure to seduce by the originality of their patterns.

At the customer's request, the basins can be made in the rest of the Jaune de Chrome colour chart: Mordor, Big Bang, Nacre, Basmati, Iris, Todra, Stardust...



Small Taiga counter top washbasin, "Song Orage" pattern. SERDANELI X JAUNE DE CHROME collection

Limoges porcelain

The Serdaneli X Jaune de Chrome basins are made of Limoges porcelain with high heat enamelling. Porcelain is a variety of ceramics (hard paste ceramics) made from clay and mineral substances, which is differentiated by its raw materials, firing and glazing. Porcelain is non-porous, and resistant to thermal and mechanical shocks. A quintessentially noble material, porcelain is perfectly suited to the bathroom world, specifically by virtue of its durability and impermeability.

The enamel process

For more than twenty-five years, Jaune de Chrome has been making products by blending traditional porcelain work and a contemporary finish through exquisite enamelwork, which is the company's unique speciality.

This exclusive process makes the products absolutely outstanding. It involves applying an alloy of enamels and metallic components to porcelain to create a most amazing material effect. This process requires great skill and a lengthy training period for each craftsman to perfectly master the patterns. Even if the gestures are flawless, it remains an artisanal process. Each item has a unique dimension, as the patterns undergo slight variations during firing (1300-1400 °C).





↑ Small Taiga counter top washbasin, "Noir Pailleté" pattern.



↑ Small Taiga counter top washbasin, "Chün Carmin" pattern.



↑ Small Taiga counter top washbasin, "Song Orange" pattern.



↑ Small Taiga counter top washbasin, "Song Perle" pattern.