

## Technical Specifications

Materials	Stainless Steel
Connections	½" flow and return.
Test pressure	5.2 Bar
Testing authority	EN442
Maximum operating pressure	4 Bar
Maximum working temperature	90 °C
Packaging	Wrapped in polyester, in cardboard box with polystyrene blocks

**PLEASE NOTE:** Systems using micro bore pipework must have adequate pressure and flow rates for the number and style of radiators on the system.

## Terms & Conditions

All products must be inspected once removed from the packaging and The Radiator Company notified within 28 days of delivery of any scratches, blemishes or other damage. The Radiator Company will then replace the radiator.

Imperfect radiators should therefore not be fitted and The Radiator Company will not accept responsibility for replacement of scratched or damaged radiators once they have been fitted. This includes any consequential loss or cost of fitting.

If The Radiator Company are not notified within 28 days of the date on the signed delivery note then it will be deemed that The Radiator Company have fully complied with its obligations and claims will not be considered.

Failure to comply with any of the above may invalidate any claims.

We recommend that after you check the product on delivery that it is stored in its packaging to prevent damage prior to installation. The Radiator Company cannot accept responsibility for items damaged after delivery.

## Guarantees & Liabilities

As we are not the manufacturers of this product we will take all reasonable endeavours to make over to you the benefit of any warranty or guarantee given by the manufacturer, which is usually five years on most of our range. (Copies of specific guarantees for any of our products are available on request).

The guarantees in all cases are subject to the products being installed in accordance with British and/or European standards as well as these fitting instructions. The guarantees in all cases are restricted to the free of charge replacement or repair of the failed product only. Our liability will under no circumstances extend beyond the repair or replacement of the product supplied by us. Claims for either labour in replacement or damage to property are not admissible. Any goods that are returned, in the event of a problem, will belong to The Radiator Company.

## Fittings Instructions



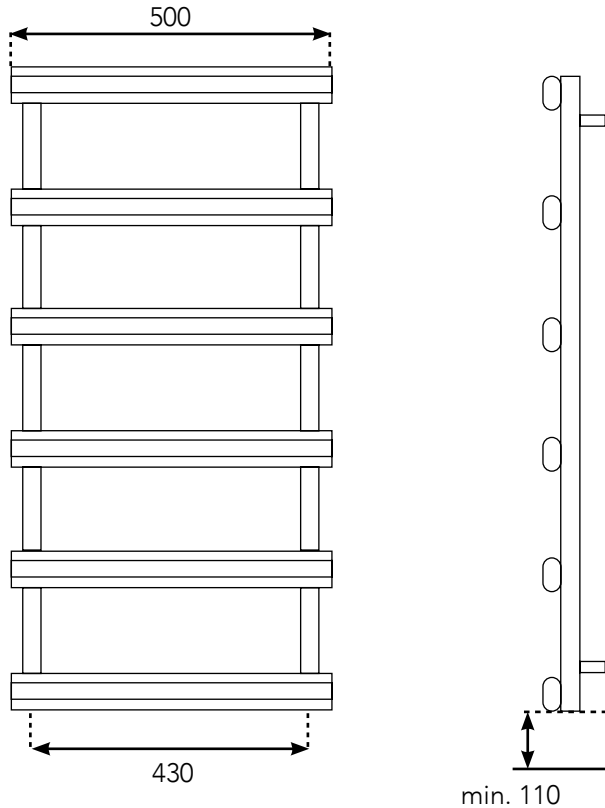
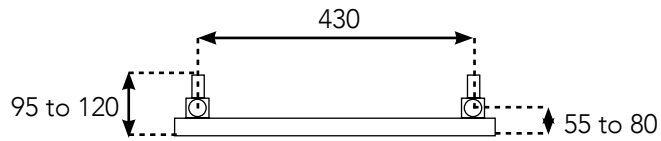
Please read these instructions and terms and conditions carefully prior to installation. Failure to do so may invalidate the warranty

The Radiator Company  
Units 13 - 14 Charlwoods Road  
East Grinstead  
West Sussex  
RH19 2HU



LYNX\_IR\_1.0

## Diagrams of Lynx



## Pipe Centres

Pipe centres left to right	430mm / width minus 70mm
Pipe centres from wall	55mm to 80mm
Depth from wall	95mm to 120mm

## 1 Unpack & Inspect

The Radiator Company prides itself on selecting products from manufacturers who exercise tight quality control measures.

We only select models with excellent standards of welding and brazing, as well as high quality finishes.

All of our products are well packaged and should reach you in perfect condition. Just in case however, we offer a 10-year no quibble guarantee on this product.

The Radiator Company must be notified of any shortages or damage within 28 days of delivery.



For further information please see terms and conditions on back page.

## 2 Contents

You should have:

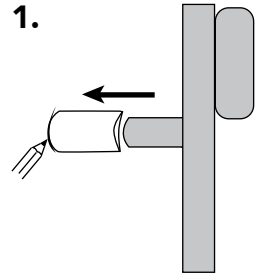
- 1 Radiator
- 4 Wall bracket sleeves & 4 grub screws (attached to radiator)
- 1 Airvent with Chrome Cap (pre-installed)
- 1 Blanking Plug with Chrome Cap (pre-installed)
- Wall fixings; these are not suitable for wall types.  
Please use suitable fixings for your wall type.

You will need:

- Tape measure
- Electric drill and bits
- Spirit level
- Crosshead screwdriver

## 3 Hang Radiator

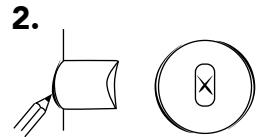
**1.** Slide on the bracket sleeves over the top two bracket studs on the back of the radiator.



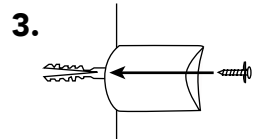
Lift the radiator in its final desired place and mark the position of the bracket.

**2.** Carefully set the radiator aside and hold the top two bracket sleeves to the wall on the markings, and mark through the centre of the bracket for drilling.

Use a spirit level to check the markings are horizontally aligned.

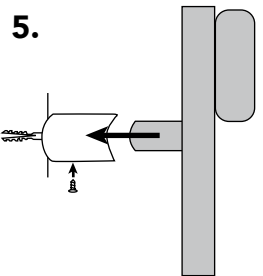


**3.** Using suitable drill bits, plugs and screws, loosely fix the top two brackets to the markings. Check the position by placing the radiator in position. If correct, securely tighten the bracket sleeves to the wall.



**4.** With the top two brackets fixed, lift the radiator into position on the top two brackets (please ensure sufficient support is given to the radiator at all times)

Mark the position for the bottom two brackets then repeat steps 1 to 3.



**5.** With all 4 bracket sleeves securely attached to the wall, hang the radiator and secure with the provided grub screws into the side of the bracket sleeves.

**PLEASE NOTE :** It is essential that all brackets are level to ensure a vertical alignment for connecting the pipework.

## 4 Commission

**Please Note:**

In accordance with Part L1 2006 of the Building Regulations and BS7593:1992 code of practice for the treatment of hot water and central heating systems, we strongly recommend flushing the heating system post installation of new radiators and then adding the correct quantity and type of inhibitor for use with your radiator and system to prevent corrosion. Damage caused to systems not protected by a suitable inhibitor will not be covered by manufacturer's guarantee.