



---

**Temperature and Humidity Sensor for Low Temperature Environment**

---

**Temperature and Humidity Sensor for Low Temperature  
Environment**

**R718A**

**User Manual**

## Table of Content

1. Introduction.....	2
2. Appearance.....	3
3. Main Features.....	3
4.Set up Instruction.....	3
4.1 Power on and Turn on / off.....	3
4.2 Join Into Lora Network.....	4
4.3 Function Key.....	4
4.4 Data Report.....	4
5. Restore to Factory Setting.....	5
6. Sleeping Mode.....	5
7. Low Voltage Alarming.....	5
8. MyDevice Dashboard Demonstration.....	6
9. Important Maintenance Instruction.....	6

## 1. Introduction

R718A, mainly used to detect the temperature and humidity at low temperature environment such as the freezer air. It collects data over LoRa network and sends it to devices to be shown, fully compatible with LoRa protocol.

LoRa Wireless Technology:

LoRa is a wireless communication technology dedicated to long distance and low power consumption. Compared with other communication methods, LoRa spread spectrum modulation method greatly increases to expand the communication distance. Widely used in long-distance, low-data wireless communications. For example, automatic meter reading, building automation equipment, wireless security systems, industrial monitoring. Main features include small size, low power consumption, transmission distance, anti-interference ability and so on.

LoRaWAN:

LoRaWAN uses LoRa technology to define end-to-end standard specifications to ensure interoperability between devices and gateways from different manufacturers.

## 2. Appearance

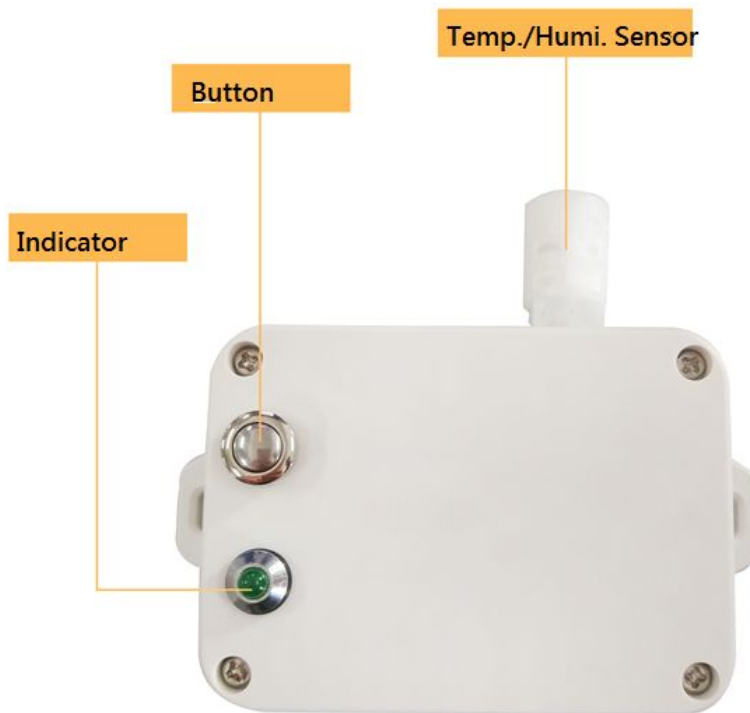


Fig.1 R718 Appearance

## 3. Main Features

- Compatible with LoRa protocol.
- 2 x 3.6V ER14505 AA lithium batteries (3.6V, 2400mah/section)
- Capable to detect the temperature and humidity at low temperature environment

## 4. Set up Instruction

### 4.1 Power on and Turn on / off

- (1) **Power on:** open the battery cover; insert two sections of 3.6V ER14505 AA lithium batteries and close the battery cover.
- (2) **Turn on:** the device (not in the network) is at off mode by default after inserting batteries. At this time, press and hold the function key (about 3 seconds) till the green light flashes once. The boot is successful.
- (3) **Turn off:** press and hold function key for 5 seconds till the green indicator flashes quickly and release. The green indicator will flash 20 times to show that R718A is turned off.

Note:

1. The interval between shutting down twice or power off/on is suggested to be about 10 seconds to avoid the interference of capacitor inductance and other energy storage components.
2. Do not press function key and insert batteries in the same time, otherwise, it will enter engineer testing mode.
3. Each time the battery is removed and inserted, it will be at off mode by default and users need to turn it on again.

## 4.2 Join Into Lora Network

To join R718A into LoRa network to communicate with LoRa gateway.

The network operation is as following:

- (1) If R718A had never joined any network, turn on the device; it will search an available LoRa network to join. The green indicator will stay on for 5 seconds to show it joins into the network, otherwise, the green indicator will be off.
- (2) If R718A had been joined into a LoRa network, remove and insert the batteries; it will repeat step (1).

## 4.3 Function Key

- (1) Press and hold function key for 5 seconds to reset to factory setting. After restoring to factory setting successfully, the green indicator will flashes quickly 20 times.
- (2) Press function key to turn on the device which is in the network and the green indicator will flash once and the device will send a data report.

## 4.4 Data Report

When the device is turned on, it will immediately send a version package and a data report of temperature/humidity/voltage. The transmission frequency of data report is once every three minutes.

Temperature default report value: mintime = maxtime = 3600s, reportchange = 0x0064 (1 °C),

Humidity default report value: mintime = maxtime = 3600s, reportchange = 0x0064 (1%),

Battery voltage default report value: mintime = 3600s maxtime = 180s, reportchange = 0x01 (0.1V).

Note: MinInterval is the sampling period for the Sensor. Sampling period  $\geq$  MinInterval.

Remarks:

1. The following single write configuration report time is used for the data sending cycle.
2. The interval between two reports must be the minimum time.

Data report configuration and sending period are as following:

Min Interval (Unit:second)	Max Interval (Unit:second)	Reportable Change	Current Change $\geq$ Reportable Change	Current Change $<$ Reportable Change
Any number between 1~65535	Any number between 1~65535	Can not be 0.	Report per Min Interval	Report per Max Interval

## 5. Restore to Factory Setting

R718A saves data including network key information, configuration information, etc. To restore to factory setting, users need to execute below operations.

1. Press and hold function key for 5 seconds till the green indicator flashes and then release; LED flashes quickly 20 times.
2. R718A will stay off mode by default setting after restoring to factory setting. Press function key to turn on R718A and to join a new LoRa network.

Note: The device operation of turning off is the same as the device restore factory settings.

## 6. Sleeping Mode

R718A is designed to enter sleeping mode for power-saving in some situations:

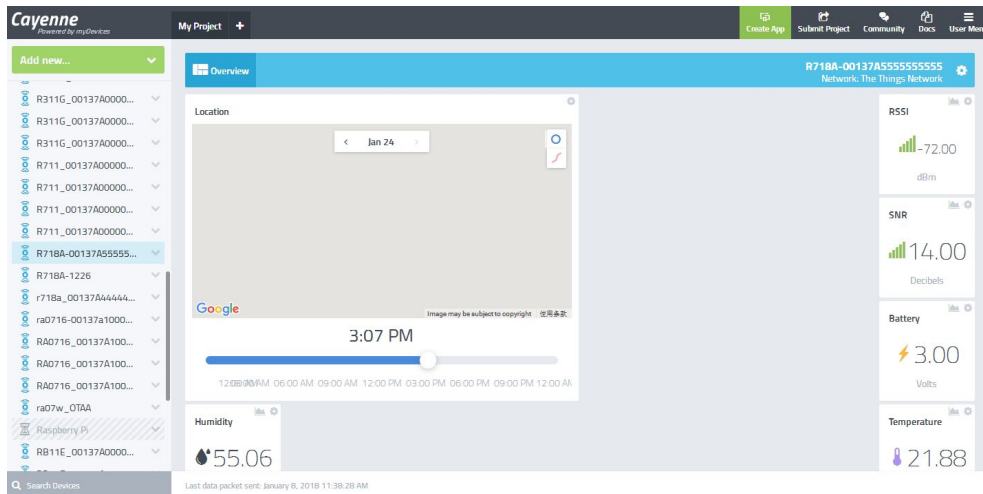
- (A) While the device is in the network → the sleeping period is Min Interval. (During this period, if the reportchange is larger than setting value, it will wake up and send a data report).
- (B) When it is not in the network → R718A will enter sleeping mode and wake up every 15 seconds to search a network to join in the first two minutes. After two minutes, it will wake up every 15 minutes to request to join the network.

If it's at (B) status, to prevent this unwanted power consumption, we recommend that users remove the batteries to power off the device.

## 7. Low Voltage Alarming

The operating voltage threshold is 3.2V. If the voltage is lower than 3.2V, R718A will send a low-power report to the Lora network.

## 8. MyDevice Dashboard Demonstration



## 9. Installation

This product comes with waterproof function. When using it, the back of it can be adsorbed on the iron surface, or the two ends can be fixed to the wall with screws.

Note: To install the battery, use a screwdriver or similar tool to assist in opening the battery cover.

## 10. Important Maintenance Instruction

Your device is a product of superior design and craftsmanship and should be used with care. The following suggestions will help you use the warranty service effectively.

- Keep the equipment dry. Rain, moisture, and various liquids or moisture may contain minerals that can corrode electronic circuits. In case the device is wet, please dry it completely.
- Do not use or store in dusty or dirty areas. This can damage its detachable parts and electronic components.
- Do not store in excessive heat. High temperatures can shorten the life of electronic devices, destroy batteries, and deform or melt some plastic parts.
- Do not store in a cold place. Otherwise, when the temperature rises to normal temperature, moisture will form inside, which will destroy the board.
- Do not throw, knock or shake the device. Rough handling of equipment can destroy internal circuit boards and delicate structures.
- Do not wash with strong chemicals, detergents or strong detergents.
- Do not apply with paint. Smudges can block debris in detachable parts and affect normal operation.
- Do not throw the battery into a fire to prevent the battery from exploding. Damaged batteries may also explode.

All of the above suggestions apply equally to your device, battery and accessories. If any device is not working properly.

Please take it to the nearest authorized service facility for repair.