

LUXE (Los Angeles Edition), Spring 2014.

LOS ANGELES

# luxe.

interiors + design®



\$ 9.95 A SANDOW PUBLICATION  
4 2 >  
74808 03333 1  
VOLUME 12, ISSUE 2 | DISPLAY UNTIL 7/14/14

luxē. | spring 2014

# features.



234

## HOLLYWOOD REVIVAL

With a thoughtful and detail-oriented approach, a 1920s Spanish-style residence is reimagined with renewed spaces and restored elements.

*Written by Mallery Roberts Morgan  
Photography by Dominique Vorillon*

248

## ISLAND INSPIRATION

A Montecito home is revived with an elegant indoor-outdoor feel that capitalizes on its California site by interpreting Italian influences through a modern lens.

*Written by Jorge S. Arango  
Photography by Lisa Romerein*

260

## UNDERCOVER COOL

Behind the classic shingled façade of a Cape Cod-style house in Malibu, sophisticated interiors reveal unexpected touches with a surprising edge.

*Written by Mindy Pantiel  
Photography by Jeremy Samuelson*

272

## VINTAGE BLEND

Singular finds and carefully curated objects set against a rich palette come together to give a Hollywood Hills abode a one-of-a-kind interior.

*Written by Lisa Bingham Dewart  
Photography by Patrick Cline*

## ON THE COVER

Architect Linda Brettler revitalized a 1920s Spanish-style house in the Hollywood Hills for herself and her family and added colorful Moroccan-patterned tile above the pool. *Page 234*

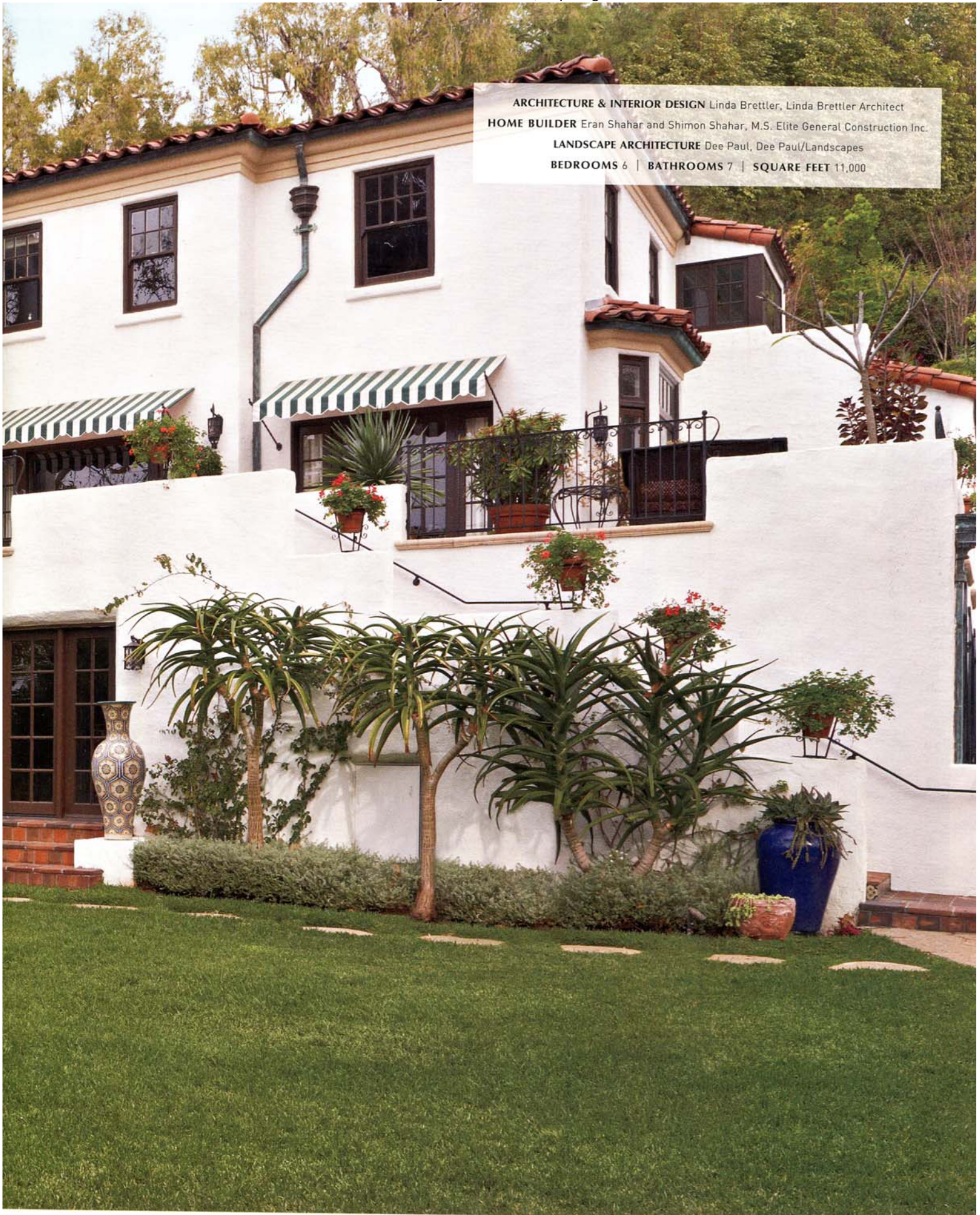


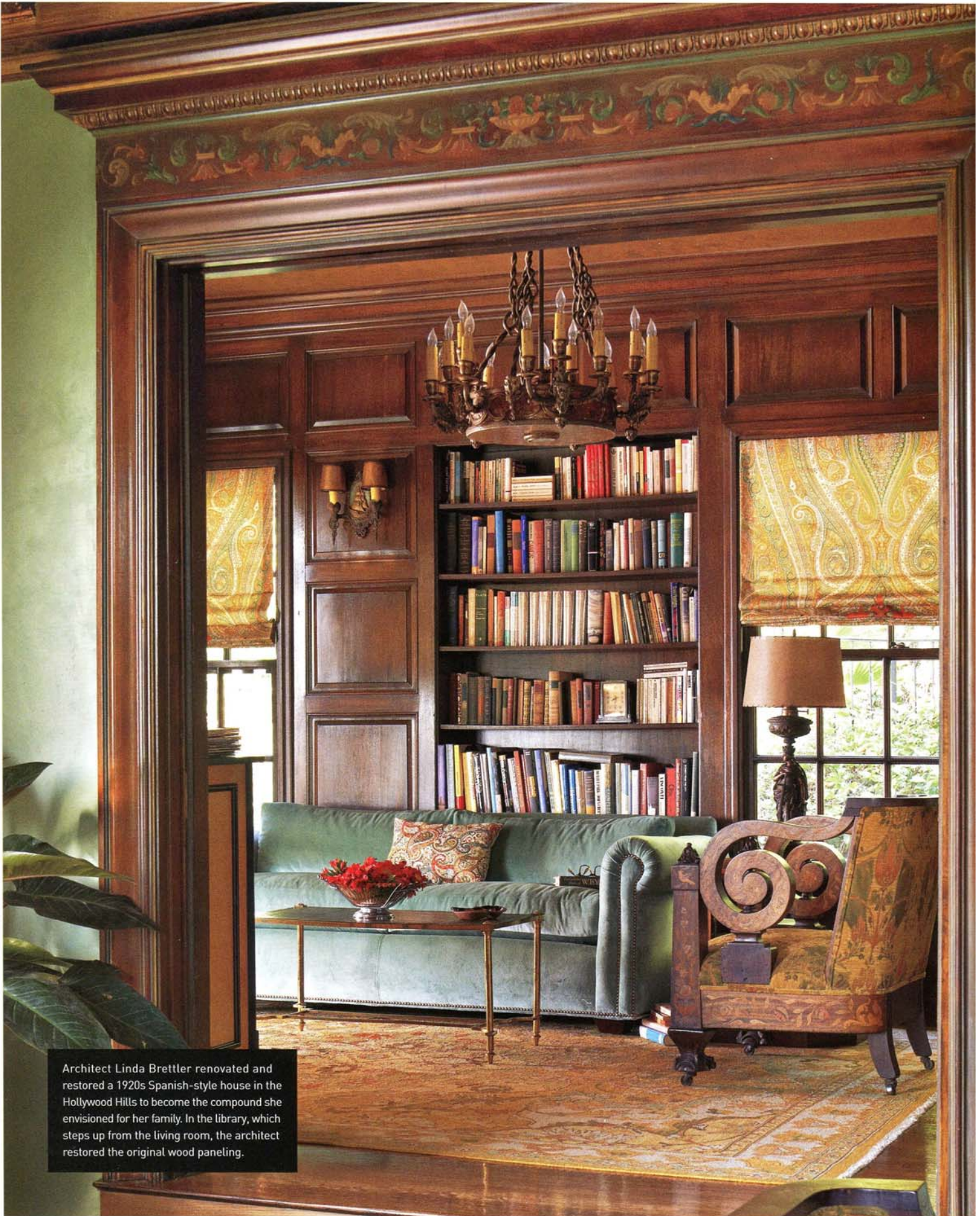
# *HOLLYWOOD REVIVAL*

BETWEEN A CAREFUL MIX OF THOUGHTFUL NEW UPDATES AND RESTORED ARCHITECTURAL ELEMENTS, A SPANISH-STYLE HOUSE IS MADE RELEVANT FOR MODERN-DAY LIFE WITHOUT LOSING ITS 1920S CHARM.

WRITTEN BY MALLERY ROBERTS MORGAN PHOTOGRAPHY BY DOMINIQUE VORILLON

**ARCHITECTURE & INTERIOR DESIGN** Linda Brettler, Linda Brettler Architect  
**HOME BUILDER** Eran Shahar and Shimon Shahar, M.S. Elite General Construction Inc.  
**LANDSCAPE ARCHITECTURE** Dee Paul, Dee Paul/Landscapes  
**BEDROOMS 6 | BATHROOMS 7 | SQUARE FEET 11,000**





Architect Linda Brettler renovated and restored a 1920s Spanish-style house in the Hollywood Hills to become the compound she envisioned for her family. In the library, which steps up from the living room, the architect restored the original wood paneling.



What's fantastic about being an architect is you can walk into a house and see its potential," says Linda Brettler referring to her chosen profession. "However, it's equally frustrating because you also know the reality of just how much work it's going to take!" Indeed, when Brettler first saw what would become her own home—a 1920s Spanish-style house by architect George H. Fruehling, perched on an acre in the Hollywood Hills—it had been on the market for some time. "It was a challenge only an architect could love," she says.

Although seduced by the old Hollywood grandeur of the 11,000-square-foot house and grounds, which came complete with a meandering brook, a grotto and a faux-bois bridge so fantastical it could have been designed for the set of *Snow White*, Brettler was well aware of the restoration work required. However, for the architect, who has four boys with husband Matthew Weiner, creator of the hit television series *Mad Men*, the property had all the makings of the perfect family compound.

In the living room, Brettler restored the original hand-painted coffered ceiling and gave the walls a plaster-like finish. A Dutch marquetry sofa, covered with an Art Nouveau fabric, pairs with 1940s Italian armchairs, purchased from Orange.

CONTINUED FROM PAGE 155

A graduate of Harvard and UCLA, Brettler opened her architectural practice in 1996. Although her ground-up projects have a contemporary tone, she is reputed for her bespoke renovations of historical properties, and she applied that detail-oriented thoughtfulness to the renovation of her own home. "Old Spanish-style houses tend to be dark," she says. "The trick is to bring back the glamour of the original design while opening up the spaces to bring in light and create an indoor-outdoor connection, which you really want in a California house."

In the kitchen, she modernized the space to fit the large family's needs by removing a formerly adjacent maid's room and pantry to create a large prep area, eat-in space and an expanded breakfast room. However, Brettler insists it is equally important not to lose the integrity of a room's original intention. "I don't like blowing open everything," explains Brettler, who defined the kitchen area with beams. "My big thing is for spaces to feel distinct."

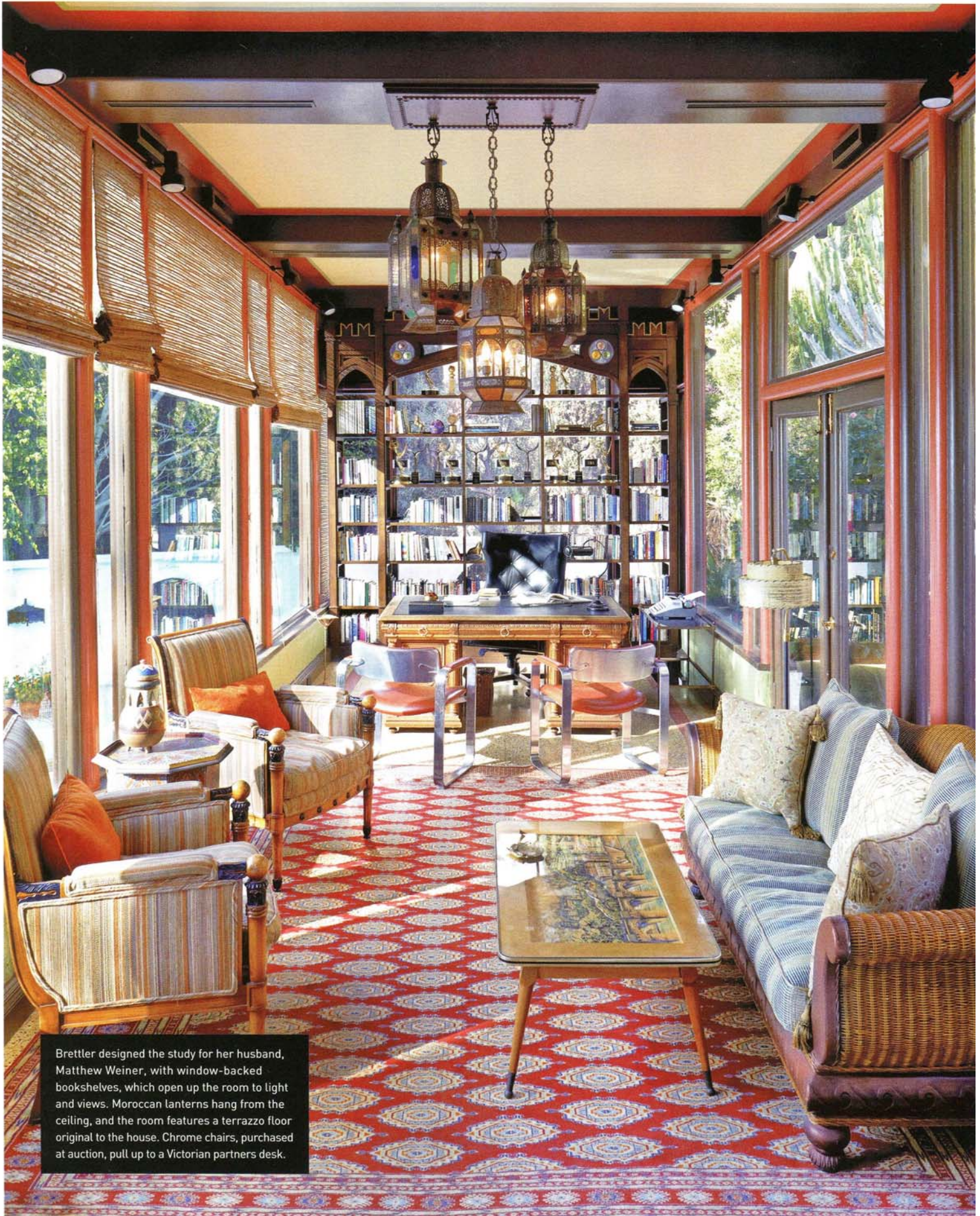
The configuration and volumes of the main rooms—living, dining and library—remained essentially the same, but upstairs a long dormitory-style hallway was entirely reconfigured to house a master suite and three children's bedrooms. Brettler also transformed a room perched above the pool into a study for her husband with a new ceiling and window-backed shelving, and, in a creative repurposing of space, she opened up a former mirrored workout room just off the pool to create an indoor-outdoor loggia complete with a bar inspired by The Musso & Frank Grill.



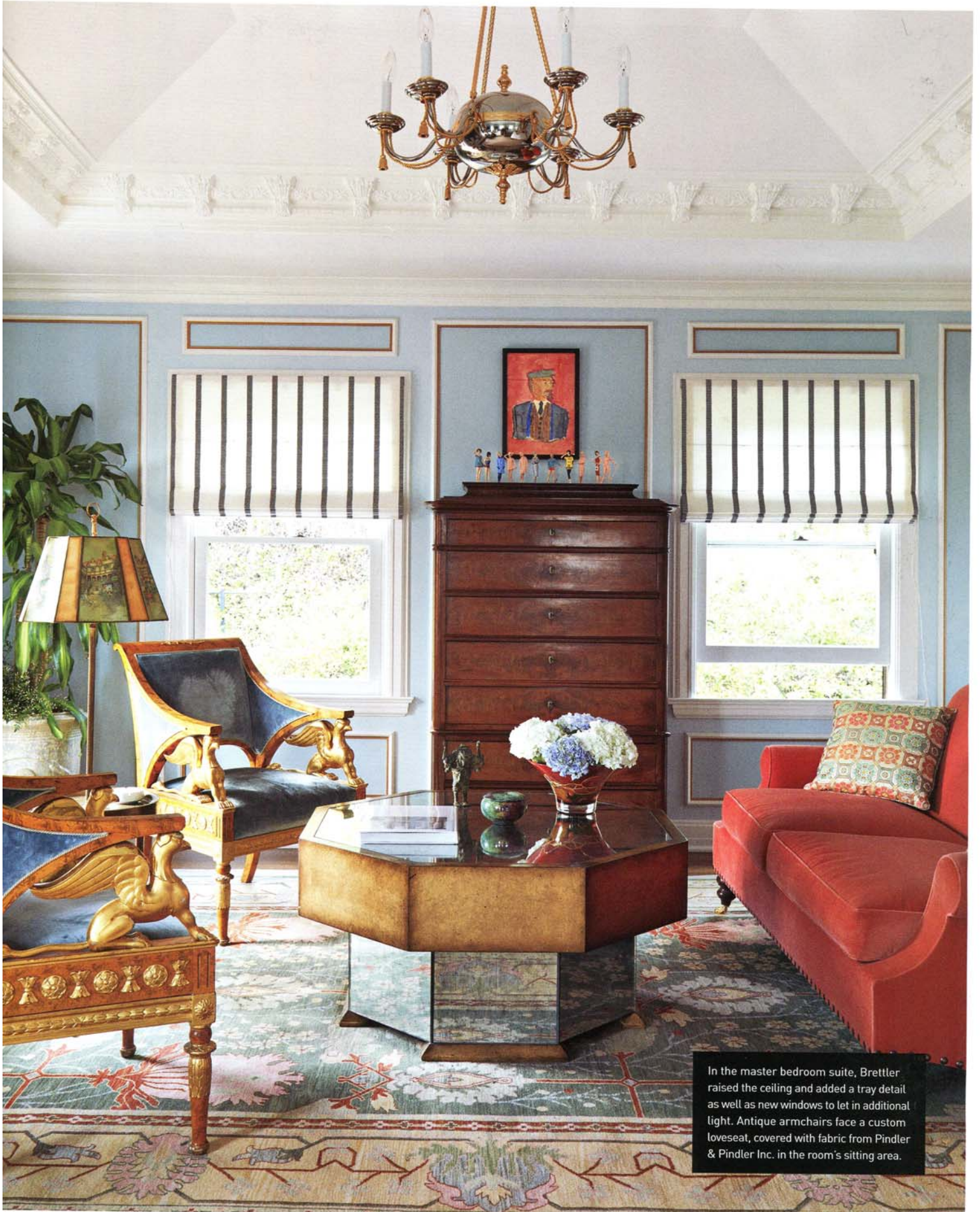


Brettler kept the dining room's original patterned ceiling and grounded the space with a rug she purchased at auction from the estate of Charles Bronson. Draperies made with Schumacher's Chiang Mai Dragon lend color to the space, as does a blue-painted wall treatment. The dining set is antique.





Brettler designed the study for her husband, Matthew Weiner, with window-backed bookshelves, which open up the room to light and views. Moroccan lanterns hang from the ceiling, and the room features a terrazzo floor original to the house. Chrome chairs, purchased at auction, pull up to a Victorian partners desk.



In the master bedroom suite, Brettler raised the ceiling and added a tray detail as well as new windows to let in additional light. Antique armchairs face a custom loveseat, covered with fabric from Pindler & Pindler Inc. in the room's sitting area.





Brettler transformed an enclosed workout room into an indoor-outdoor loggia just off the pool. Framed by a beamed ceiling and custom tile floor, the space is anchored by a blue-marble-topped bar, which was designed by Brettler and fabricated by M.S. Elite General Construction Inc. The bar chairs are vintage.



CONTINUED FROM PAGE 156

Throughout the spaces, Brettler's trademark love of detail is evident. In the living room, she restored the original hand-painted coffered ceiling and had the walls hand-troweled with a subtle metallic paint for a plaster-like finish. She also crowned the breakfast room with Deco-style ceiling moldings made from plasterwork recreated for the Griffith Observatory's restoration to complement an original Batchelder tile planter. "Rooms resolved to that level of detail create a richer experience," notes the architect, whose approach was not lost on builder Eran Shahar. "With Linda, you learn something new on every project," says Shahar, who worked with partner Shimon Shahar on the home. "There are no repeats, and every last detail is custom. She is so quality-oriented that each project I do with her pushes my work to a higher level."

Red walls add warmth to the modernized kitchen, which Brettler reconfigured to include an eat-in space and a large prep area. The architect designed the custom cabinetry and island, all fabricated by Perfection Cabinets, and chose the bar chairs from Arteriors.



An original Batchelder tile planter and new French doors help define the light-filled breakfast room. Brettler designed the Vetrazzo-topped table and had it made at Arte Design Imports. A colorful chandelier from Dispeta Antiques plays off the floral Pindler & Pindler Inc. drapery fabric.



The architect renovated the terrace around the existing pool and, with landscape designer Dee Paul, added a wall punctuated by arches and built-in benches. Brettler also replastered the wall above the pool and created a focal point with Moroccan-patterned tile from Malibu Tile Works.



CONTINUED FROM PAGE 162

Period-appropriate fixtures and lighting, including Art Deco pendants hanging above the kitchen island that once hung in the city's old Bullocks Wilshire department store, mix with a personal collection of furnishings, mostly sourced from flea markets, auctions, estate sales and online sources. "You can find amazing pieces that have far more character," Brettler says of items like an oversize Egyptian Revival mirror she found at auction and placed in the living room. "Not a lot of people are going to be interested in such a tall piece but it's perfect for us."

Brettler worked with landscape designer Dee Paul to address the extensive grounds. "Family life was of the utmost importance in all of our design decisions," explains Paul, who extended and leveled the front yard to create a lawn "where the boys can play soccer." Paul also terraced the property's grade with meandering pathways and private sitting areas and designed places to grow edibles as well as flowers.

"This is it," says Brettler. "This is the compound. I have a vision of the kids being here with their kids, and we'll all be hanging out together. I've told them I plan to live here forever. They'll have to cart me out when I'm 100!" **L**