

NATIVE UNION

TITLE

S M A R T - P D - G R Y - V 2
SMART CHARGER PD-20W-SLATE-INT
Instruction manual

SCALE

100%

VERSION

1.1

SIZE

172x240mm

DATE

27 JAN 2021

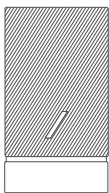
COLOR & PAPER

Print Black on white paper

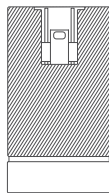
FINISHING

SMART CHARGER PD

GUIDE D'INSTALLATION GUÍA DE INSTALACIÓN



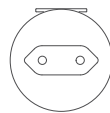
CONTENU / LO QUE HAY DENTRO



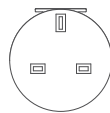
US
(Type A)



Étui
Adaptateur

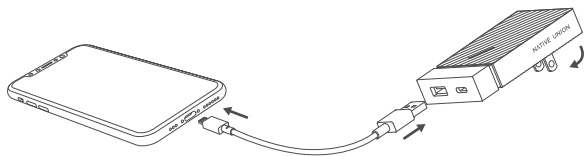


Europe
(Type C)
EN 50075



UK
(Type G)
BS 1363-3

CONNEXION / CÓMO CONECTAR



CARACTÉRISTIQUE / LAS ESPECIFICACIONES

SMART CHARGER PD

N° DE MODÈLE / El número de modelo: SMPD02

Entrée / La entrada: AC 100-240V ~ 0,5A, 50/60Hz Class II

Sortie / La salida: Type A: DC 5,0V===2,4A

Type C: DC 5,0V===3,0A ; DC 9,0V===2,22A ; DC 12,0V===1,5A

Puissance Totale / La producción total: 20,0W

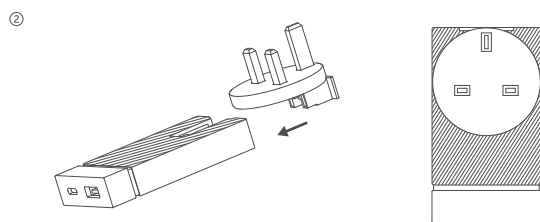
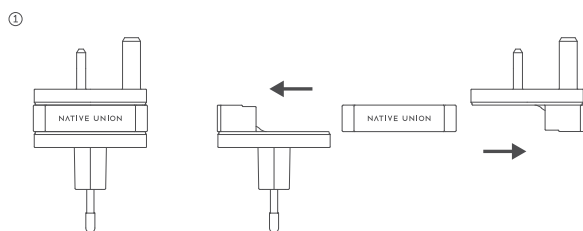
Numéro BR: 50401444-000

Efficacité active moyenne: 80,55%

Efficacité à faible charge: 73,82%

Consommation électrique à vide: 0,11W

INSTALLATION / CÓMO INSTALAR



INFORMATIONS DE SÉCURITÉ

1. Ce produit est destiné à un usage domestique et de bureau.
2. Exclusivement pour un usage en intérieur.
3. Normes de sécurité: IEC62368-1: 2014 (2nd Edition).
4. Ne laissez pas tomber le produit et évitez-lui tout choc.
5. Ne placez pas le produit dans une zone exposée à la chaleur, la lumière directe du soleil, l'humidité ou la pluie, et n'exposez pas le produit à des vibrations, des chocs, la présence de poussières ou de sable, des vibrations excessives ou tout type d'aimant.
6. Le connecteur de ce transformateur ne peut pas être remplacé.
7. Pour déconnecter le produit de la prise secteur, tirez sur la fiche d'alimentation.
8. La prise secteur doit être placée près de l'équipement et facile d'accès.
9. N'utilisez que des câbles USB intacts et de qualité supérieure avec ce produit.
10. Évitez que les câbles ne soient pincés ou endommagés.
11. Un câble ou un appareil endommagé peut ne pas fonctionner correctement et/ou surchauffer. (Risque d'incendie)
12. Débranchez le produit si vous ne l'utilisez pas pendant une période prolongée.

MEDIDAS DE SEGURIDAD

1. Este producto ha sido concebido únicamente para hogares y oficinas.
2. Solo para uso en interiores.
3. Medidas de seguridad: IEC62368-1: 2014 (2nd Edition).
4. No deje caer el producto ni lo someta a impactos.
5. No coloque el producto en un lugar expuesto al calor, la luz directa del sol, la humedad, el agua, la lluvia, las vibraciones, los choques, el polvo, la arena, las vibraciones excesivas o ceca de cualquier tipo de imán.
6. El conector de este transformador no es reemplazable.
7. La desconexión de la corriente se efectúa tirando del enchufe del cable.
8. La toma de corriente debe estar situada cerca del aparato y ser fácilmente accesible.
9. Utilice solamente cables USB de alta calidad que no estén dañados.
10. Procure evitar los daños o el aprisionamiento de los cables.
11. Un cable o dispositivo dañados pueden funcionar mal y/o sobrecalentarse. (Peligro de incendio)
12. Desenchufe el producto si no va a ser utilizado por un largo periodo de tiempo.

More information | Plus d'informations | Mehr Infos | Más información | Mais Informações |
Maggiori informazioni | 更多信息 | 詳しくは | 추가 정보 | Дополнительная информация |
معلومات إضافية | Daha fazla bilgi | περισσότερες πληροφορίες | Vice informacii |
Meer informatie | Lisää tietoa | Több információ | Mer informasjon | Więcej informacji |
Mer information | ข้อมูลเพิ่มเติม | Them thông tin | अधिक जानकारी |

 nativeunion.com/product-documentation
nativeunion.com/support

Manufacturer / Fabricant / Fabricante / Hersteller: Design Pool Limited, 2/F, East Town Building, 41 Lockhart Road, Wan Chai, Hong Kong - support@nativeunion.com

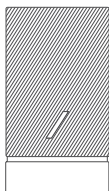
Made in China / Fabriqué en Chine / Hecho en China / Hergestellt in China 2020

© 2020 NATIVE UNION, NATIVE UNION est une marque déposée de Design Pool Limited, Fabriqué en Chine.

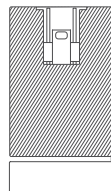
© 2020 NATIVE UNION, NATIVE UNION es una marca registrada de Design Pool Limited, Hecho en China

SMART CHARGER PD

SET UP GUIDE



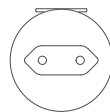
WHAT IS INSIDE



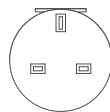
US
(Type A)



Adapter
Case

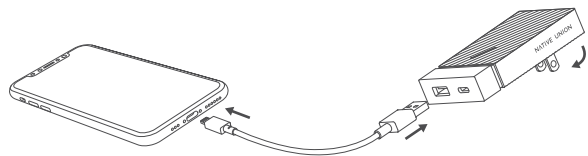


Europe
(Type C)
EN 50075

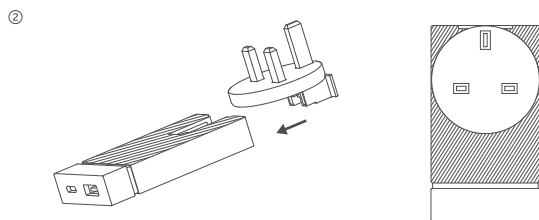
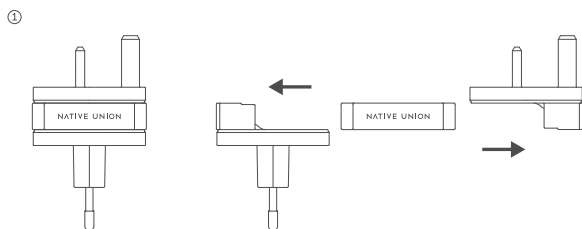


UK
(Type G)
BS 1363-3

HOW TO CONNECT



HOW TO INSTALL



SAFETY INFORMATION

1. This product is intended for home & office use.
2. For indoor use only.
3. Safety standards: IEC62368-1: 2014 (2nd Edition).
4. Do not drop the product or submit it to impact.
5. Do not place the product in an area exposed to heat, direct sunlight, dampness, moisture, rain, vibration, shock, dust or sand, excessive vibration or near any kind of magnet.
6. The connector of this transformer cannot be replaced.
7. The disconnection from line voltage is made by pulling the mains plug
8. The socket-outlet shall be installed near the equipment and shall be easily accessible.
9. Use only with high quality, undamaged USB cables.
10. Prevent cables from being pinched or damaged.
11. A damaged cable or device may malfunction and/or overheat. (Fire hazard)
12. Unplug the product if not used for an extended period of time.

DOC Declaration of Conformity (Europe)

Hereby, Design Pool Limited declares that the product SMPD02 is in compliance with Directive(s) 2014/30/EU & 2009/125/EC.

The full text of the EU DoC is available at the following internet address.

Par la présente, Design Pool Limited déclare que le produit SMPD02 est conforme à la (aux) directive(s) 2014/30/UE & 2009/125/CE. Le texte intégral de la déclaration de conformité CE est disponible à l'adresse Internet ci-dessous.

Por la presente, Design Pool Limited declara que el producto SMPD02 cumple con la (s) Directiva (s) 2014/30/EU & 2009/125/EC. El texto completo de la DoC de la UE está disponible en la siguiente dirección de Internet:



nativeunion.com/product-documentation

REGULATORY INFORMATION

INFORMATIONS RÉGLEMENTAIRES / LA INFORMACIÓN REGLAMENTARIA



FCC Statement (USA)

FCC responsible party: Design Pool LLC
(dba Native Union) C/O Armanino LLP, 11766 Wilshire
Blvd Fl 9, Los Angeles, CA 90025-1586
Telephone +1 (855) 969 5525

CONFORMS TO UL STD.62368-1
CERTIFIED TO CSA STD. C22.2 NO. 62368-1
CAN-ICES-3(B)/NMB-3(B)

This device complies with part 15 of the FCC Rules. Operation is subject to the following two conditions: (1) This device may not cause harmful interference, and (2) this device must accept any interference received, including interference that may cause undesired operation.

Warning: Changes or modifications to this unit not expressly approved by the party responsible for compliance could void the user's authority to operate the equipment.

Note: This equipment has been tested and found to comply with the limits for a Class B digital device, pursuant to part 15 of the FCC Rules. These limits are designed to provide reasonable protection against harmful interference in a residential installation. This equipment generates, uses and can radiate radio frequency energy and, if not installed and used in accordance with the instructions, may cause harmful interference to radio communications. However, there is no guarantee that interference will not occur in a particular installation. If this equipment does cause harmful interference to radio or television reception, which can be determined by turning the equipment off and on, the user is encouraged to try to correct the interference by one or more of the following measures:

- Reorient or relocate the receiving antenna.
- Increase the separation between the equipment and receiver.
- Connect the equipment into an outlet on a circuit different from that to which the receiver is connected.
- Consult the dealer or an experienced radio/TV technician for help.