



VISION

STRUCTURAL FIREFIGHTING GLOVES

CERTIFIED TO NFPA 1971-2018




WHEN SECONDS MATTER, PRO-TECH 8 VISION GLOVES ARE THERE FOR YOU


Our glow-in-the-dark bands absorb light and clearly identify your location in all low-light to no-light conditions for hours. The reinforced eight-layer knuckle guard, water-resistant outer shell made of FR treated water buffalo hide and certified Porelle PTFE moisture barrier, to protect against chemical and viral threats, make this your go to glove in any situation.




WATER & FLAME RESISTANT
Water buffalo hide exterior keeps hands dry and safe



GLOWS IN THE DARK
RIT Rescue Bands support downed firefighter rescue and high-vis need situations



REINFORCED KNUCKLE GUARD
8 layers featuring 100% Kevlar® fused with silicon carbide



PORELLE® PTFE MOISTURE BARRIER
Triple-Certified* to protect against chemical and viral threats



*NFPA 1971- 2018 Outside Glove, NFPA 1971-2018 Inside Glove, and EN 659

GLOW-IN-THE-DARK RIT RESCUE BAND



WATER BUFFALO HIDE





VISION FEATURES

- SUPERIOR WET-AND-DRY GRIP**
 Water buffalo hide and stitched down palm delivers exceptional grip
- ENHANCED DEXTERITY**
 Finger sidewalls feature DuPont™ Kevlar® and Nomex®
- EASY DON AND DOFF**
 Using modacrylic inner liner and durable leather pull tab
- RESISTS PULLOUT**
 Inner liner is sewn and bonded at each fingertip for maximum resistance to pullout
- NFPA 1971-2018 CERTIFIED**
 Materials certified to NFPA 1971-2018 for Professional-Grade Hazard Protection

SIZING CHART

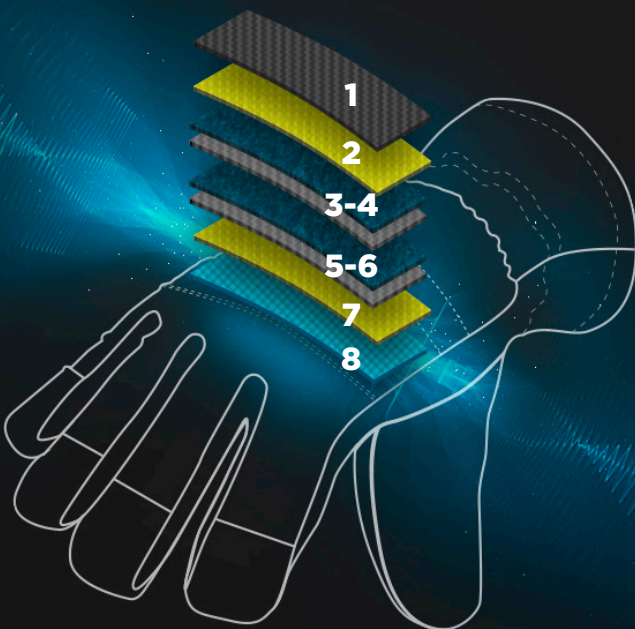
NFPA 1971-2018 sizing ranges from 64-82 in both N (narrow) and W (wide) varieties. A measuring guide can be found on our website www.protech8.com. Please reference the chart below for the equivalent alpha sizes from previous Pro-Tech 8 models**.

64N	70N	70W	76N	76W	82N	82W	82XW
XS	S	M	M/L	L/XL	XL	XXL	XXXL

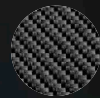
MODEL NUMBER: PT-8 VSC - AVAILABLE IN SHORT CUFF AND CADET SIZES

**These are a rough estimation; the best way to determine your size is to use the steps laid out in the standard.

PROPRIETARY 8-LAYER KNUCKLE-GUARD TECHNOLOGY™



The most vulnerable area on a firefighter's hand is the knuckle. Pro-Tech 8's unique multi-layer knuckle guard system provides unmatched thermal protection and cut/puncture resistance.



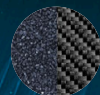
1 - KEVLAR / NOMEX

Para-aramid Synthetic Fiber



2 / 7 - MODACRYLIC

Flame-Resistant Meta-aramid Modacrylic Material



3-4 / 5-6 - SILICONE CARBIDE / KEVLAR

A Compound of Silicon and Carbon Used as an Abrasive Layered with Kevlar



9 - MODACRYLIC INNER LINER

Flame-Resistant Meta-aramid Modacrylic Material

WWW.PROTECH8.COM - INFO@PROTECH8.COM



Disclaimer: User is responsible for assessing suitability of product for specific use. Pro-Tech 8 Structural Gloves are heat and flame RESISTANT, not PROOF. Pro-Tech 8 Structural Gloves are cut and puncture RESISTANT, not PROOF. Please see instructions for use and warnings on our website for more details. Materials and features may vary.