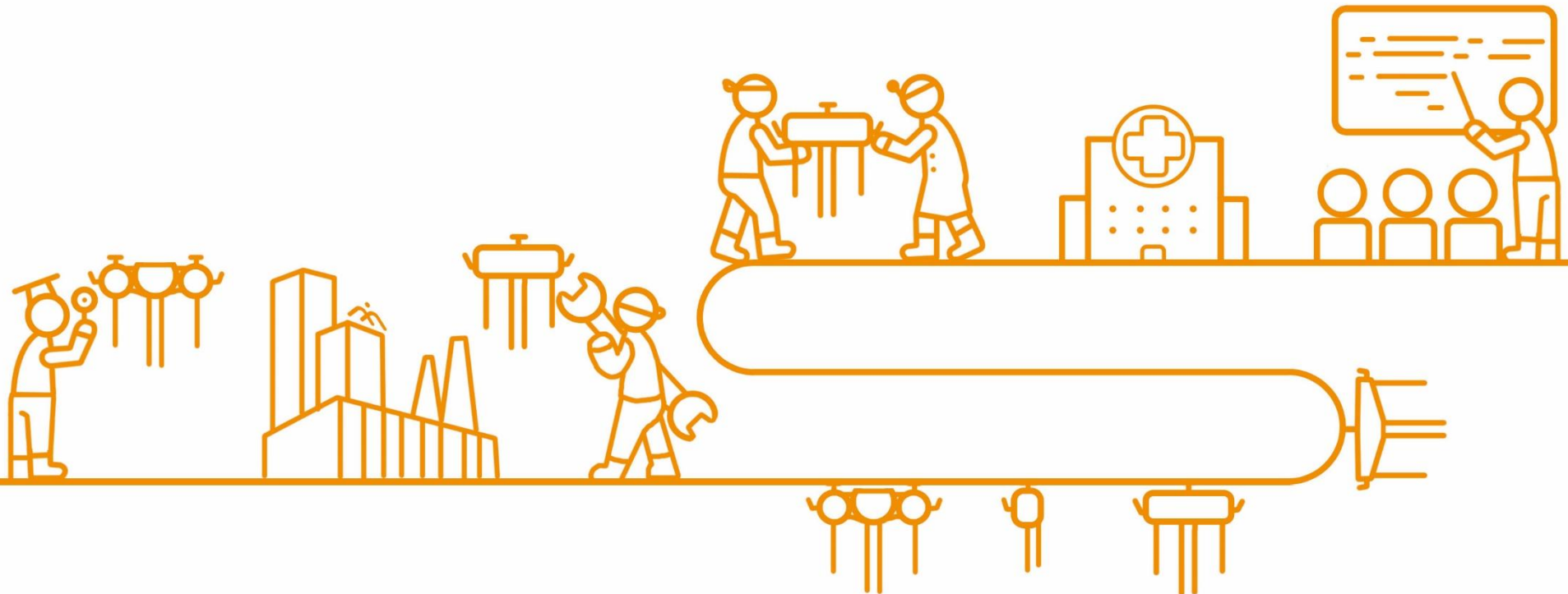


# MARPE Co., Ltd.

Healthy Life Leaders



# Marpe Co., Ltd. will become a leading company in the 21<sup>st</sup> century with the goal of a healthy life.

Since its establishment in 2000, Marpe has been leading changes in the market through constant R&D and innovation to lead the world beyond Korea as a specialized company that manufactures rehabilitation and exercise equipment.

With its CEO carrying decades of clinical experience in physical therapy as well as its young employees, Marpe products are developed by researching treatment and exercise methods based on scientific evidence-based domestic and international research papers. In addition, we strive to maximize the use of our products by our customers through professional user training.

All employees of Marpe promise to do their best to lead the global healthcare market in a rapidly changing world.

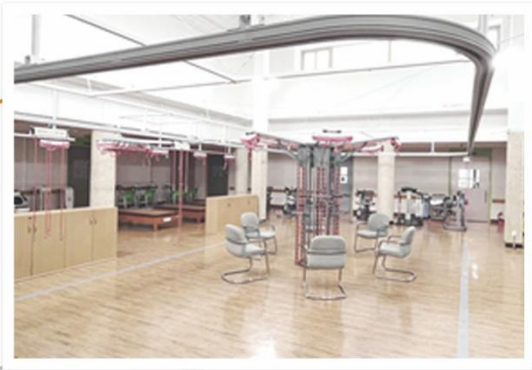
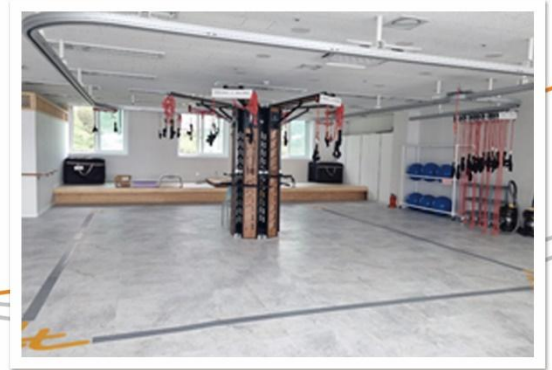
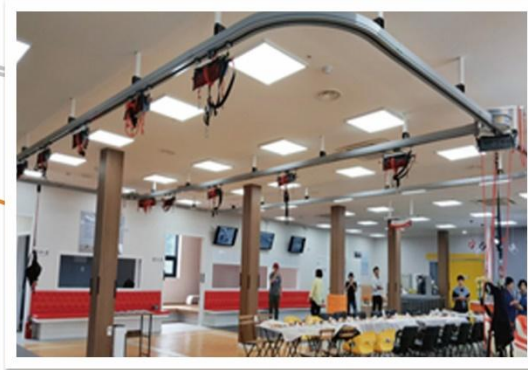
Marpe Co., Ltd.

Taek-Yeon Kim (CEO)



Kim Taekyeon

# Success Story



# Gait Training System-Rail

GTS-Ceiling Type



"GTS-Ceiling Type" is a ceiling-mounted product that enables customized rehabilitation training and gait training by providing various shapes and sizes at the request of clients.

GTS-Stand Type



"GTS-Stand Type" is an assembly-type product that can be installed without any on-site construction, which enables various rehabilitation training and gait training using parallel bars.

## Features of Rail

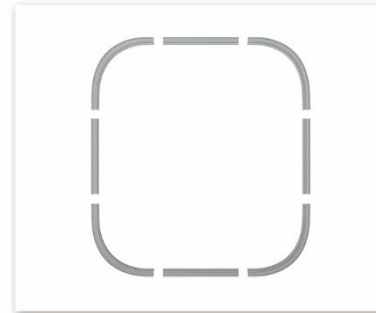
- The rail design prevents the Sling from slipping unnecessarily, enabling smooth gait rehabilitation.
- It can be customized to the size and shape desired by the consumer.
- No problem with long-term use because it is a safe and robust installation.

## Specifications

Customized in various shapes.



## Details



### Customizing

We offer custom rails in the desired size and shape.



### Rail bending

The only company in Korea that does rail bending directly, so the quality is excellent.



### CE Certification

Certified with European CE certification for consumer safety and health.



### Parallel bar

The stand-type product includes a Parallel Bar for professional gait rehabilitation.



## Gait Training System-Turn Terminal

- "Turn Terminal System (TTS)" is used to change the direction of the sling when walking as well as it is used for parking the unused sling device
- In the case of auto model, T-shaped rotation as well as +-shaped rotation is possible

TTS-Manual



TTS-Auto



## Features of Turn Terminal

- It is used for direction change and sling storage when configuring the GTS rail shape.
- Can choose between manual and auto type, and both models provide smooth direction change.

## Specifications

- Width 1000mm
- Height 110mm
- Depth 700mm
- Weight 25kg

## Details



### Manual handle

Rotate with one handle for convenient operation



### Motorized device

Can change the direction comfortably with the remote control, reducing user fatigue.



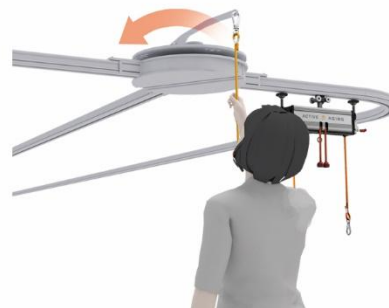
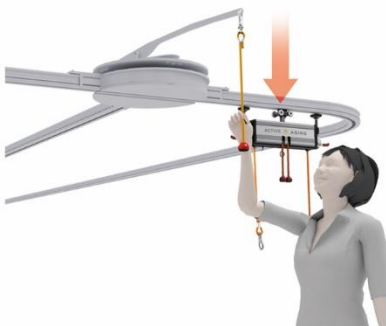
### CE Certification

Certified with European CE certification for consumer safety and health.



### Customizing

For efficient use, we provide suitable TTS for your facility.



## Gait Training System-M Sling

- M Sling is a movable sling that can change direction and rotate 360 degrees
- Various sling exercise programs are possible by fixing to the rail





## Features of M Sling

- As a representative sling product of GTS, it is the most functional product.
- Using the principle of the sling, not only walking training but also upper and lower body strength training, relaxation training, stretching, and balance training are possible.

## Specifications

- Width 560mm
- Height 120mm
- Depth 65mm
- Weight 5kg



## Details



**Roller**

The specially designed roller device enables smooth movement and free change of direction.



**Fixing device**

It is used to securely fix the M Sling in the desired location.



**CE Certification**

Certified with European CE certification for consumer safety and health.



**M Suit**

It is easy to use, and It is a suit made of only high-quality material for the comfort of the user.

## Gait Training System-Single Sling

- Single Sling is a movable sling that allows free rail movement
- A balance training program is possible by fixing it to the rail



## Features of Single Sling

- Single sling is specialized for gait training.
- The size and weight are reduced to enable a smoother gait during gait training.

## Specifications

- Width 130mm
- Height 165mm
- Depth 65mm
- Weight 2.1kg



## Details



**Roller**

The specially designed roller device enables smooth movement and free change of direction.



**Fixing device**

It is used to securely fix the Single Sling in the desired location.



**CE Certification**

Certified with European CE certification for consumer safety and health.



**Accessories**

We provide the customized holders and accessories for various rehabilitation training.

Authorised Representative,  
Imported and distributed by:



**ASIAN INTEGRATED MEDICAL SDN BHD**

20, Jalan CP 6/50 Taman Cheras Perdana  
43200 Cheras Selangor.

[www.iElder.asia](http://www.iElder.asia)

+6012-228 8472

[marketplace@ielder.asia](mailto:marketplace@ielder.asia)

**Marpe Co., Ltd.**

Healthy Life Leaders

Address : Yongdeok-gil 3-30, Deokjin-gu, Jeonju-si, Jeollabuk-do

Tel : +82)63-212-7585

Fax : +82)63-273-7585

