

# USER MANUAL GUIDE

## Gait Training System

1. OVERVIEW
2. FEATURES
3. DETAILS
4. MANUAL
5. COMPONENTS
6. PRECAUTION



## 1. OVERVIEW

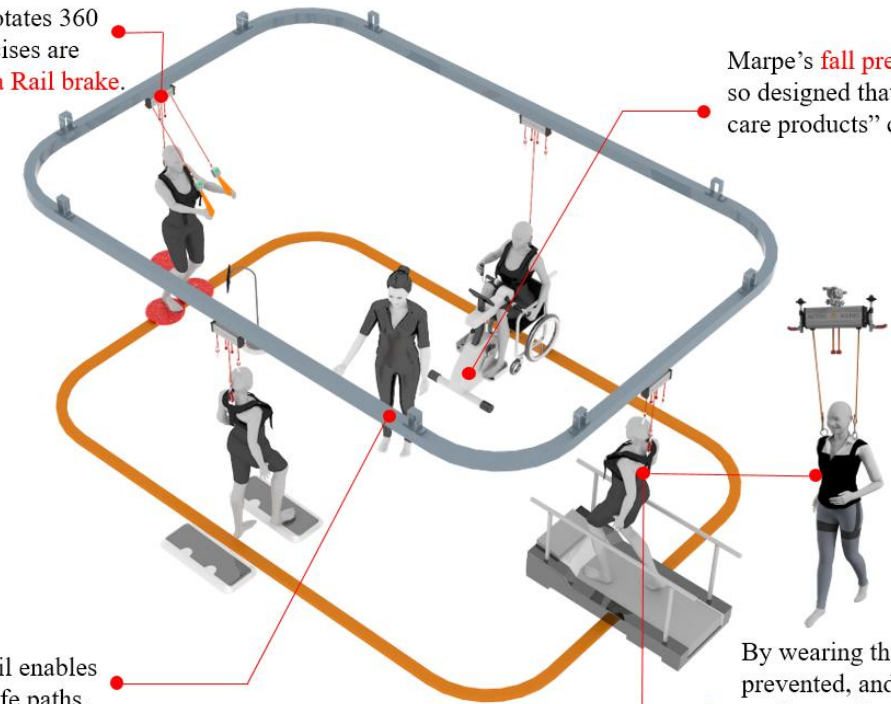
The **Gait Training System (GTS)** is composed of a walking **Rail**, **M-Sling**, and **M-Suit**, and its main function is to prevent falls.

GTS guides elders or patients with chronic disabilities to do various functional activity of daily living in hospitals and rehabilitation centers effectively.

The main uses of the GTS are in hospitals, rehabilitation centers, elderly welfare centers, and facilities for the disabled.

Group therapeutic exercise system can let many users can have training at the same time.

M-Sling is movable and rotates 360 degrees, and various exercises are possible when **fixed with a Rail brake**.



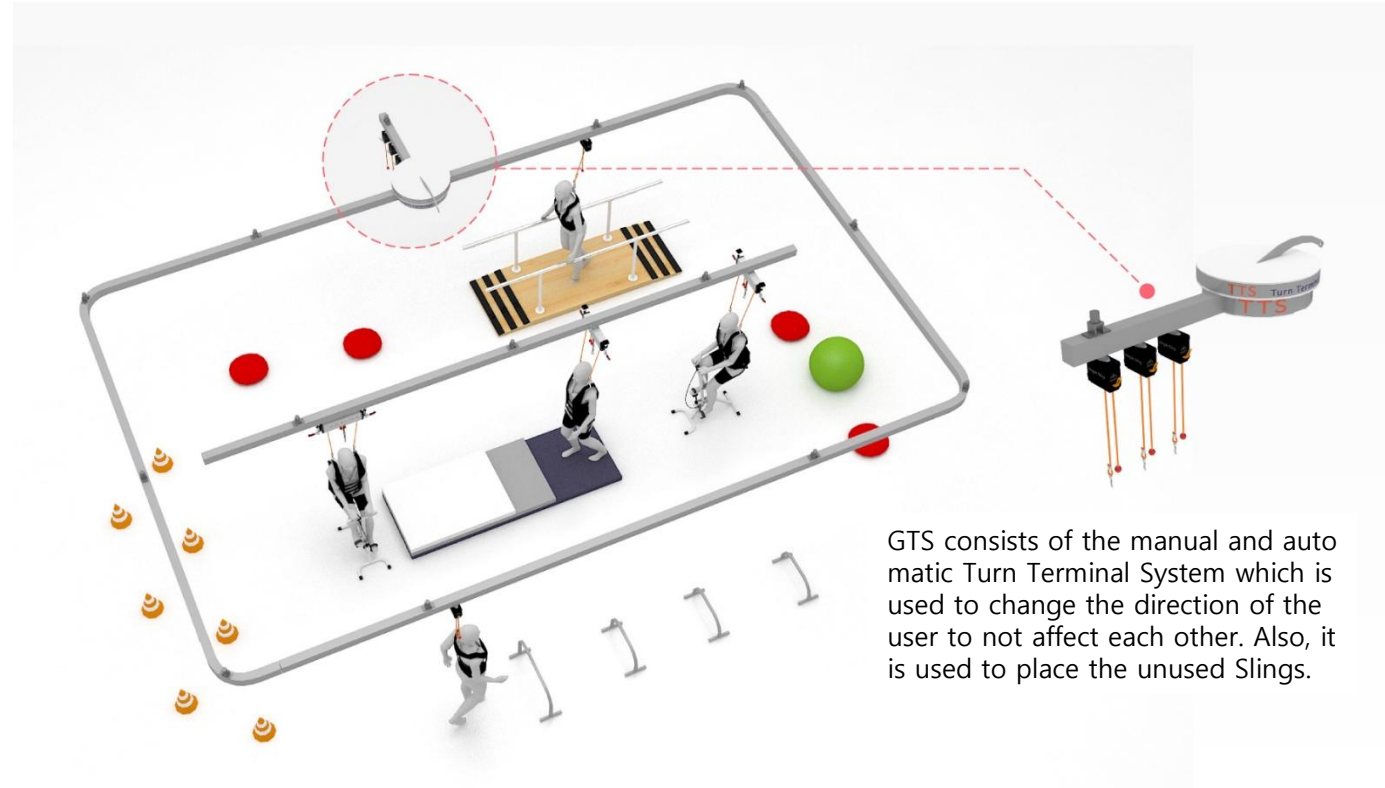
Marpe's **fall prevention system** is so designed that "existing health care products" can be used safely.

Using the Rail enables to walk on safe paths.

By wearing the **M-Suit**, fall is prevented, and it is possible to perform safe walking and various exercises .

## 2. FEATURES

1. GTS is a unique method to train patients who cannot walk independently caused by severe damages.
2. M-Sling system has the ability to fix easily, quickly, and safely to any position on the walking rail.
3. M-Sling can hold a maximum load of about 200kg, so even people with heavyweight can safely train.
4. M-Sling has the function of the Sling system, which enables professional rehabilitation training as well as simple gait training.
5. GTS develops the manual and automatic (remote control) Turn Terminal System to change users at the center or other outer rail direction without affecting each other. And not only GTS can use at the same time but also to install variously in small space and effective in time and space



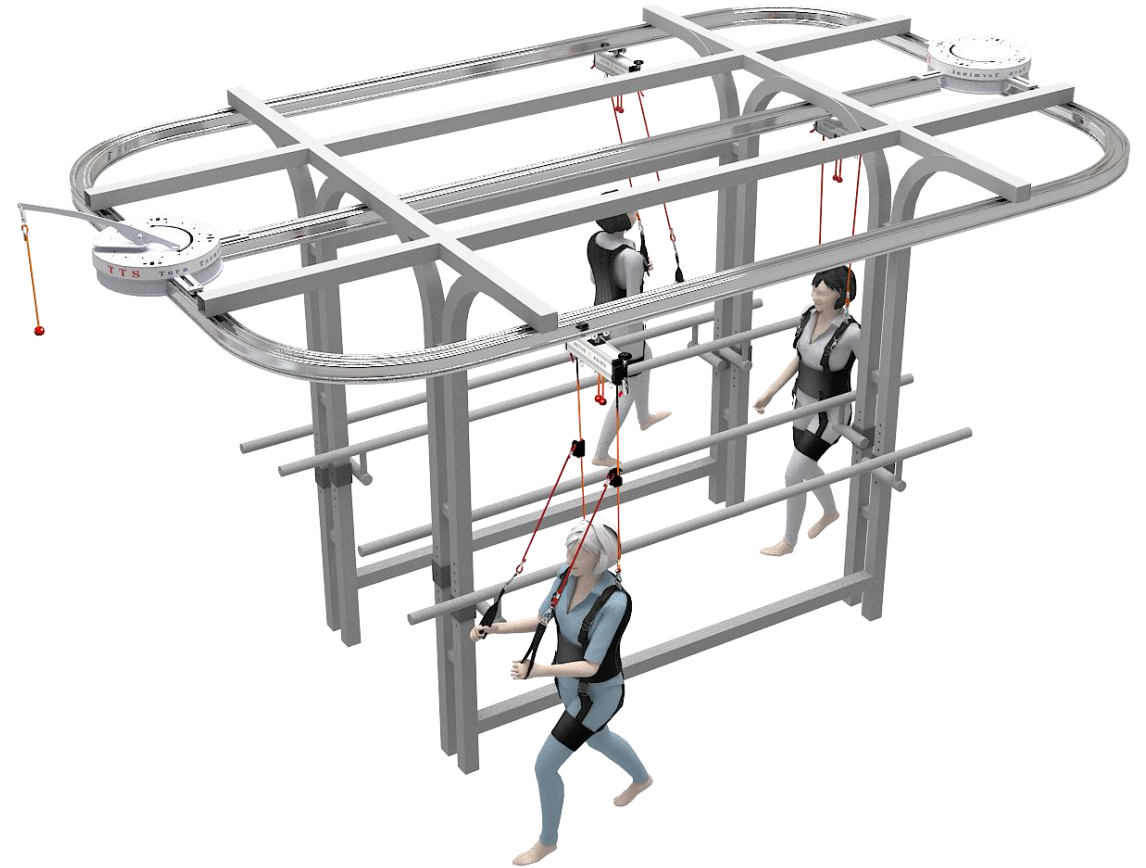
GTS consists of the manual and automatic Turn Terminal System which is used to change the direction of the user to not affect each other. Also, it is used to place the unused Slings.

## 2. FEATURES

6. GTS is available in both **ceiling** and **stand type**. The GTS stand type can be installed in such places where ceiling installation is not possible.

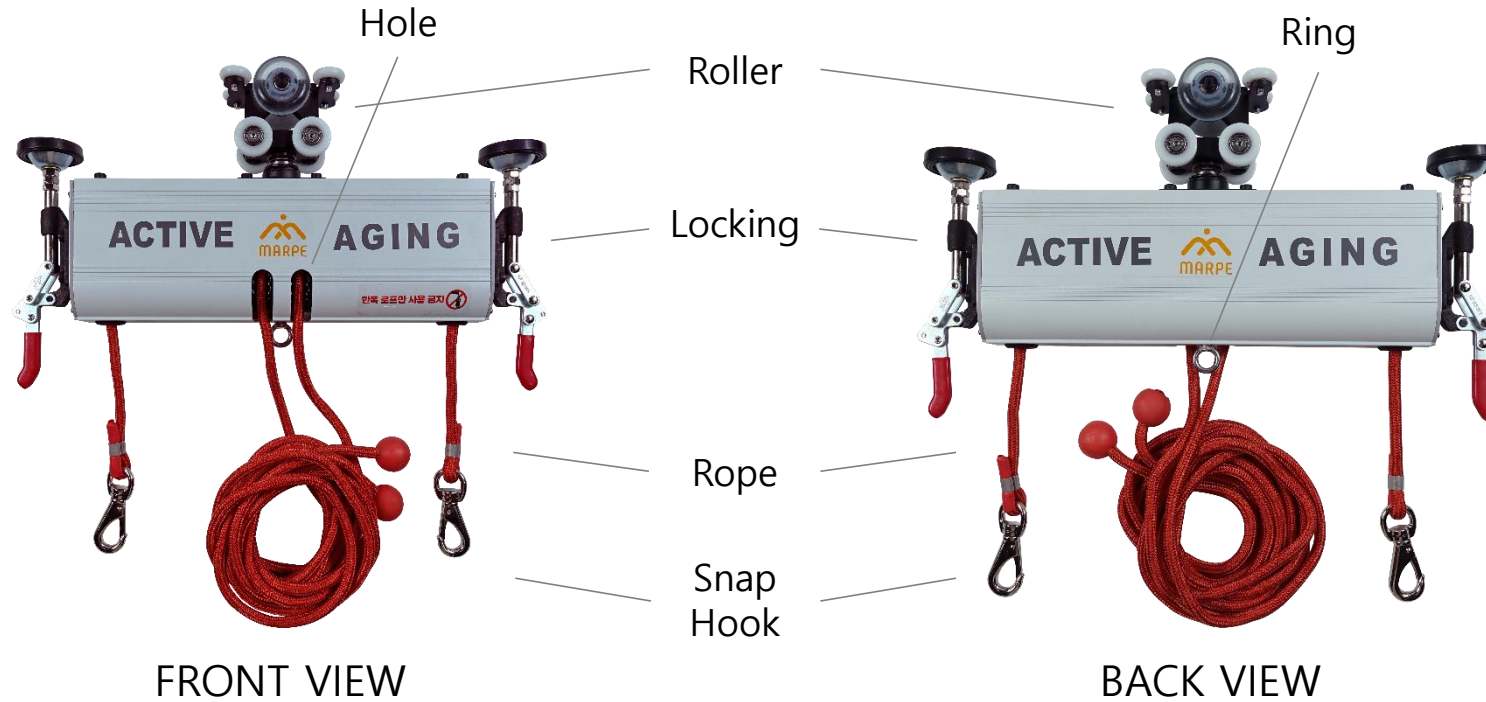
7. The basic size of GTS stand is **4m (L) x 2.5m (W) x 2.3m (H)**, so can be used in a narrow space.

8. The GTS stand can make several rail shapes within its size. For example, straight rail shape, a circular rail shape, or a mixed shape of a round and straight rail.



GTS stand size: 4m (L) x 2.5 (W)m x 2.3m (H) / 300kg (Weight)

### 3-1 DETAILS of M-Sling



TOP VIEW



BOTTOM VIEW



SIDE VIEW

357mm (Width) x 65mm (Depth) x 120mm (Height) / 5kg

Maximum load of M- Sling System : 200kg

Main Material : Aluminum, Steel, Polyester, Polyacetal, Urethane, Rubber

### 3-2 DETAILS of Rail



Entire view of Rail



FRONT & BACK VIEW



BOTTOM VIEW



TOP VIEW

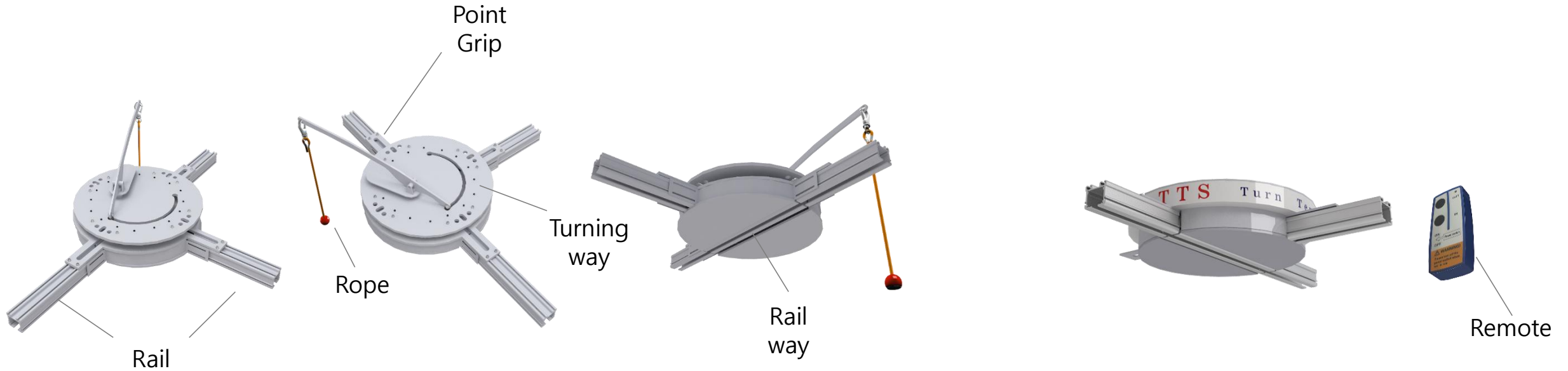


SIDE VIEW

1,000mm (Width) x 104mm (Height) x 83mm (Depth) / 5kg - Per 1m

Main Material : Steel

### 3-3 DETAILS of Turn Terminal



**Manual Turn Terminal**

**Automatic Turn Terminal**

1000mm (Width) x 110mm (Height) x 700mm (Depth) / 25kg

Main Material : Steel

3-4 DETAILS of M-Suit



Entire view of M-Suit

Triangle Hook

Adjustable Buckle



FRONT VIEW

Shoulder Strap

Waist Belt

Thigh Belt



BACK VIEW

Assist Safety Strap

Rope Pocket

Waist Strap

Main Material : Neoprene, Air-mesh, Webbing, Plastic, Steel



## 4-1 MANUAL of M-Sling

### How to use M-Sling System

#### 1. Releasing and Lowering Ropes

(a) Stand in front of the device, hold the **Adjusting Ropes** (middle) in one hand and **Main Ropes** (connected straps with hook) in other hand

(b) Gently pull forward the **Adjusting Ropes** from Cleat to move the rope freely and pull the **Main Ropes** straight down to the desired height

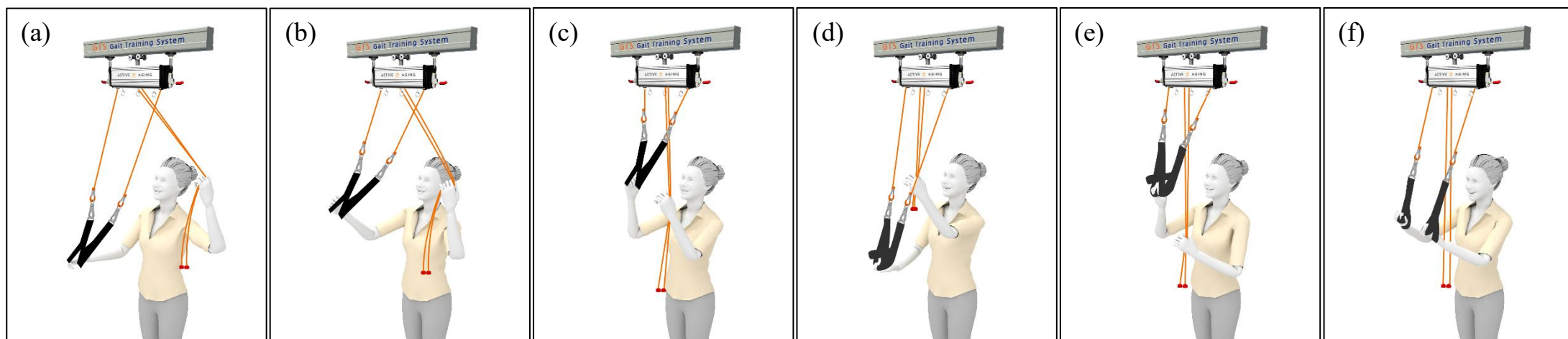
#### 2. Locking Ropes

(c) Fix the **Adjusting Ropes** to the Cleat, so they hang straight down; the ropes will lock when a load is placed on them

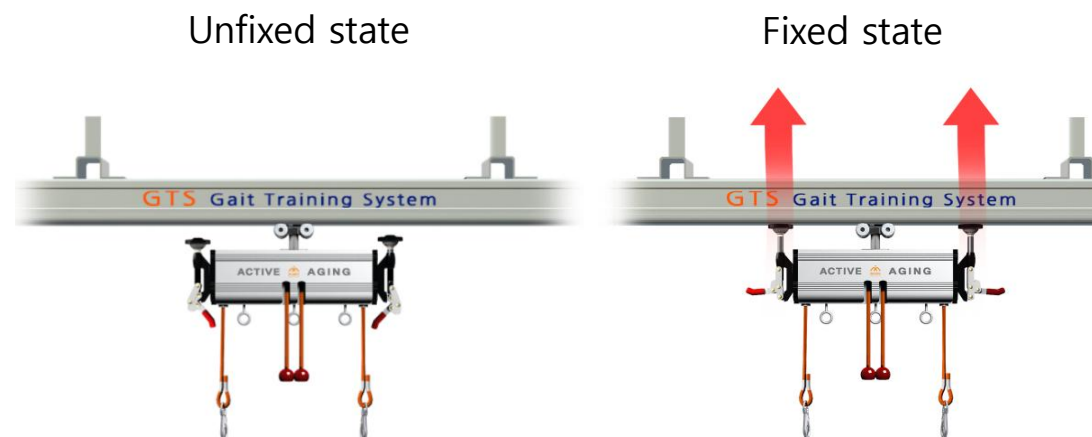
#### 3. Raising Straps

(d-e) Pull the **Adjusting Ropes** straight down until the straps are at the desired height

(f) The straps will lock when a load is placed on them

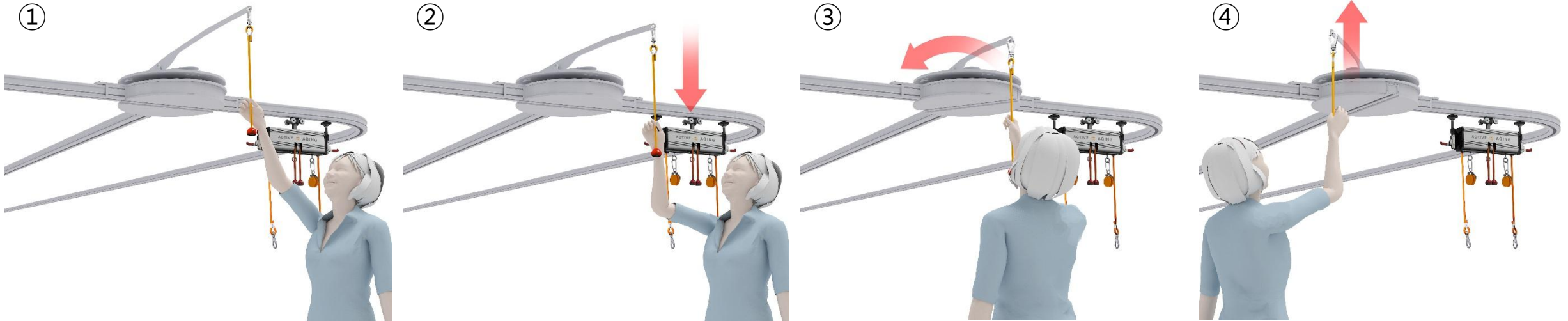


## 4-2 MANUAL of fixing M-Sling to the Rail



- ① When securing the M-Sling to the rail, position the M-Sling horizontally to the rail.
- ② Hold the red fixing levers on both sides of the M-Sling and lift up all the way to the sides to fix it.
- ③ On the contrary, when releasing the fixing, hold the red fixing lever in the order of ③ → ① and lower it all the way down,
  - If the fixing device is not lowered all the way down, it may cause jamming in the rail.
  - Fixing device should always be used on both sides at the same time.

## 4-3 MANUAL of Turn Terminal System (Manual)



- ① Hold the Rope of the Turn Terminal
- ② Pull the rope straight down
- ③ Rotate the Point Grip in desired place
- ④ Release the rope

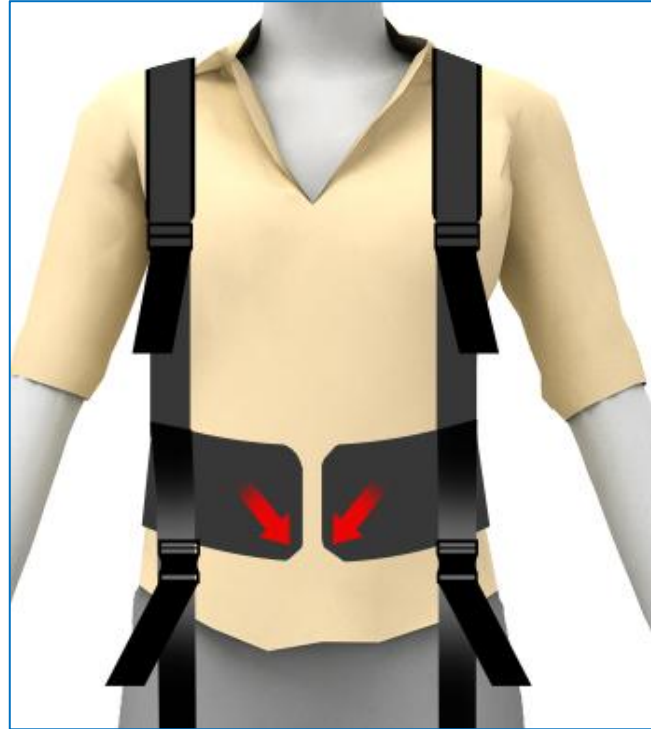
## 4-4 MANUAL of M-Suit

①



① First, a suit is placed on the user's shoulders and stands in front of him/her, sticking out one leg to support the body.

②



② The waist belt should be located below the middle of the waist and aligning the belt inward.

③



③ Pull the inner belt tight, then stick the outer belt firmly on top of it.

## 4-4 MANUAL of M-Suit

④



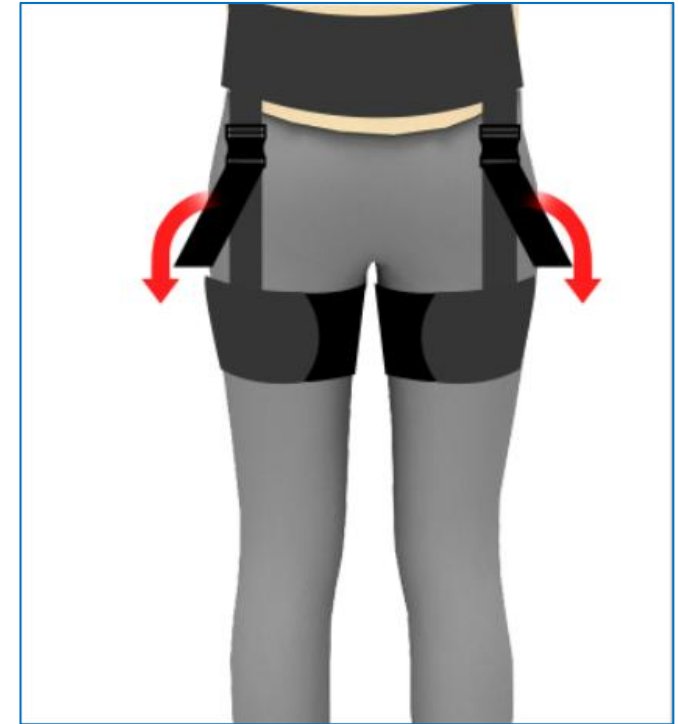
④ Adjust the shoulder strap to fit the user's body type. (Slightly raised the Adjustable Buckle with one hand and pull down the Webbing belt for smooth adjustment.)

⑤



⑤ The lower part of the suit is filled in the middle of the thigh with Velcro.

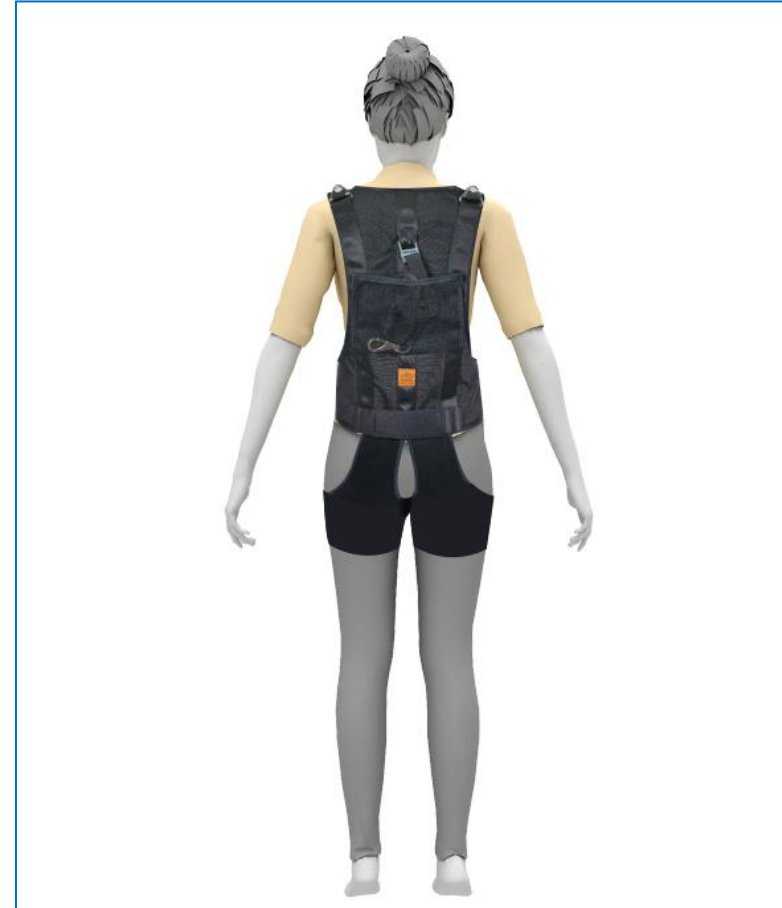
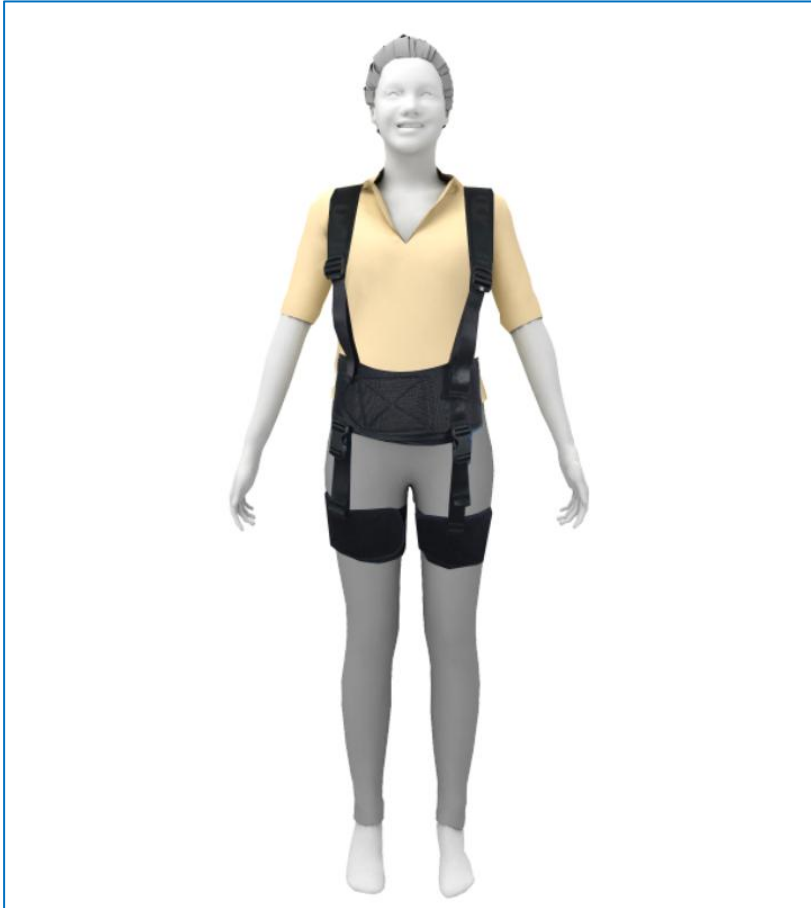
⑥



⑥ Wearing the suit is completed by pulling the front length adjustment strap down tightly.

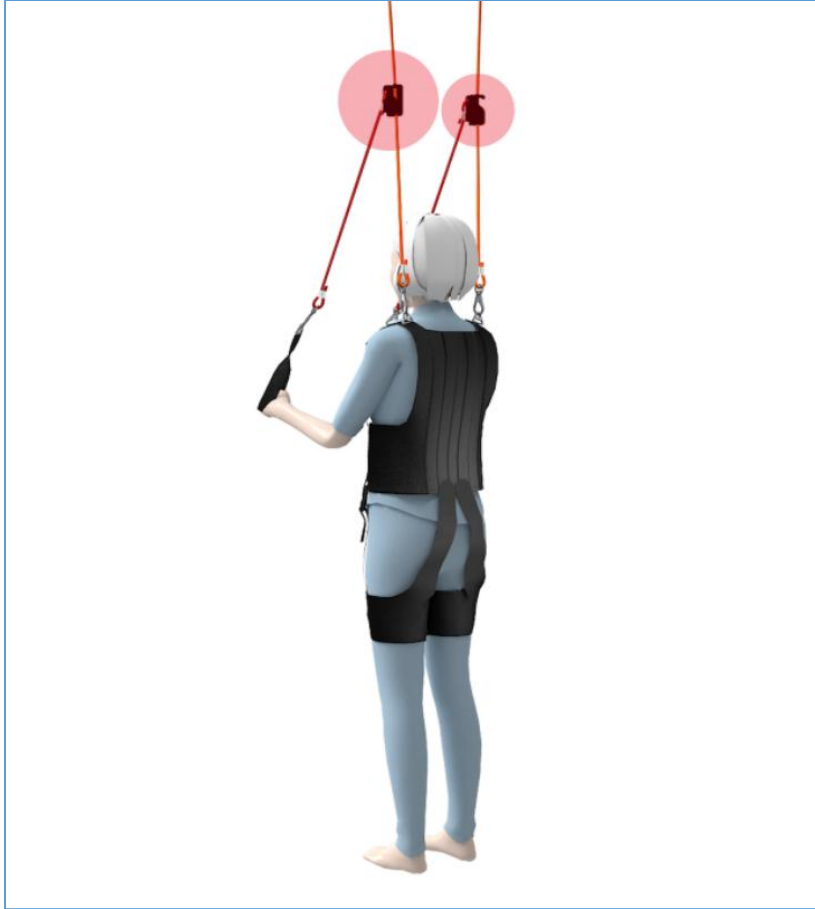
## 4-4 MANUAL of M-Suit

### Wearing the suit correctly

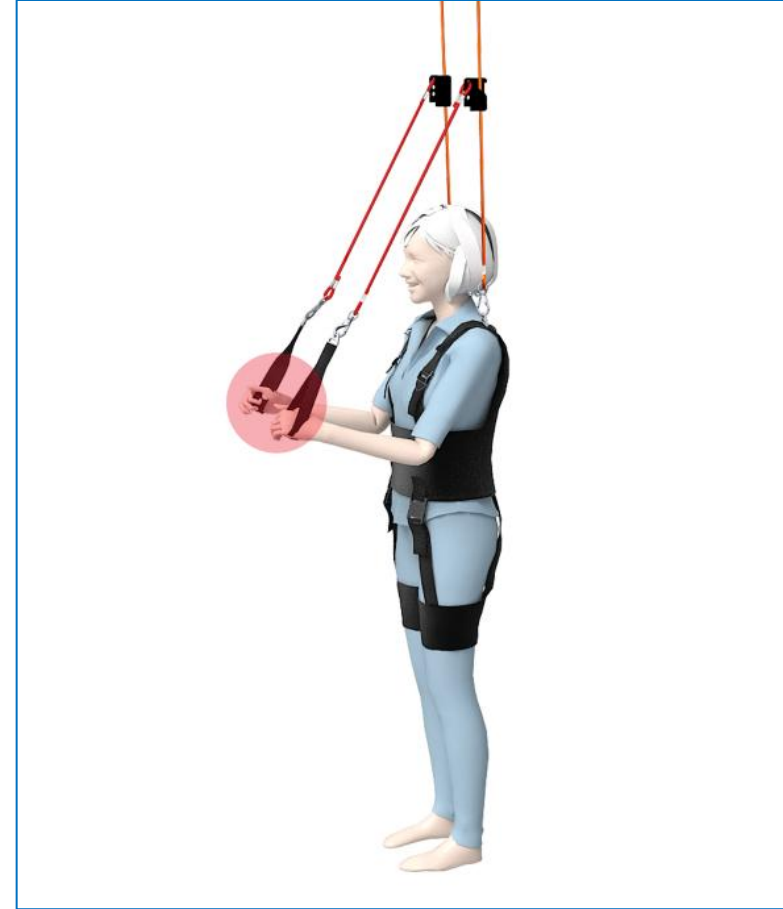


## 4-4 MANUAL of M-Suit

### How to attach the multi-strap to the M-Sling



Attach the non-elastic assist rope of 30 cm to the M-Sling main rope, as shown in the figure.



Hang and hold the multi-strap as shown in the figure.

## 5. COMPONENTS



- ① M-Sling(1ea) : 357mm x 120mm x 65mm
- ② M-Suit(1ea)
- ③ Multi Strap(2ea) : 340mm x 290mm
- ④ Rope 30cm(2ea) :  $\varnothing 8$  x 300mm
- ⑤ Elastic 130cm(1ea) :  $\varnothing 7$  x 1300mm
- ⑥ Pulley(1ea) : 155mm x  $\varnothing 48$ mm
- ⑦ Rail



## 6. Others

### **PRECAUTIONS FOR USE**

Periodically check that the M-Sling system is well secured to the rails.

Noise can be prevented when using the M-Sling system by applying grease to the roller wheels periodically.

Periodically check that the ropes of the M-Sling system are in good condition.

Do not hang on or place weight on only one rope of the M-Sling system.

Raise the brake lever all the way up when securing the M-Sling to the rail, and lower it all the way down when moving. If the rope doesn't fix in the cleat of the M-Sling system, stop using the M-Sling system and please contact us.

### **STORAGE AND MAINTENANCE**

Store the M-Sling System in a cool and dry place and clean them with a soft dry cloth. The working temperature should be 0 ~ 45°C(32 ~ 113°F). Working in cold/hot environments or highly humid areas will reduce the durability.

### **CONTACT US**

If you need to repair a product under warranty, please send a detailed explanation describing the problem to [harold.marpe@gmail.com](mailto:harold.marpe@gmail.com) and simply wait for the instructions.

Find more information on the dedicated website [www.marpe2000.co.kr](http://www.marpe2000.co.kr)



MARPE

Healthy Life Leaders

Authorised Representative,  
Imported and distributed by:



ASIAN INTEGRATED MEDICAL SDN BHD  
20, Jalan CP 6/50 Taman Cheras Perdana  
43200 Cheras Selangor.

[www.iElder.asia](http://www.iElder.asia)    +6012-228 8472    [marketplace@ielder.asia](mailto:marketplace@ielder.asia)

Marpe. All Rights Reserved.