

CLEANING

1. Before cleaning, please unplug the appliance and let it cool down
2. Do not put the product, power cord or plug into water
3. Keep the cord dry
4. Never clean the product with alcohol or solvent-based cleansers
5. Please clean the surface with a damp towel first and then dry it with a soft, cotton cloth.

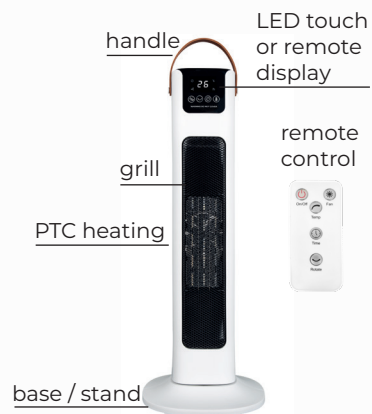
NOTE: do not use anything abrasive which might scratch the surface

WARRANTY INFORMATION

- The manufacturer provides a warranty in accordance with the legislation of the customer's own country of residence, with a minimum of 2 years starting from the date on which the appliance is sold to the end user
- The warranty only covers defects in material or workmanship
- The repairs under warranty may only be carried out by an authorised service centre.
- When making a claim under the warranty, the original bill of purchase, with purchase date, must be submitted.

COMPONENTS

1. Main heating unit
2. Base / stand
3. Remote control - batteries included



Vybra

neatheat

PORTABLE CERAMIC HEATER

VSCH01

Instruction Manual



MODEL: VSCH01

IP DEGREE: IP 44

RATING: 220V~ / 50/60Hz / 230W

PTC Heating

SIZE: 605 x 97 x 120 MM



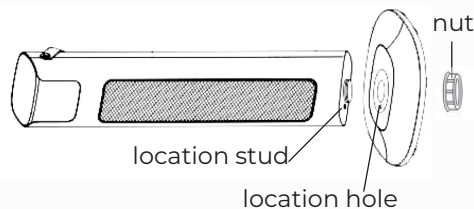
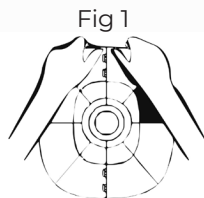
IMPORTANT SAFEGUARDS

Please read all instructions before using this product and keep these safety instructions for future reference.

1. Always unplug the product when not in use
2. Do not use the product if the unit, plug, cord or any part of the unit is damaged
3. For indoor use on a flat floor only - do not use outdoors
4. Do not put the heater directly in front of curtains or furniture
5. Keep a distance of approximately 1 m clear above the heater
6. Never put the unit into water and do not use with wet hands
7. Unplug the unit via the plug - do not pull the cord
8. Do not place any objects into the vents or exhaust ports - this may cause fire, or damage the product
9. Do not use near flammable liquids
10. Use this unit as described in this manual to avoid damage or injury
11. Children should be supervised when near the product
12. Do not cover
13. This product is not intended for use with an extension cable - plug directly into a wall socket
14. Do not store in a dusty room when not in use for a long period of time
15. Please unplug the appliance when not in use and before cleaning
16. Please use with caution and under any necessary supervision

PRODUCT SET UP

1. Take the two white base plates out, align the location holes and push together until they click into place (Fig 1)
2. Unscrew and remove the large black plastic nut from the bottom of the unit
3. Align the white base plate onto the main unit's base - ensuring the small round location stud aligns with the base small location hole
4. Twist until it clicks into place
5. Replace the black plastic nut and screw on, to secure the base to the unit
6. Stand upright and connect to a wall power socket



INSTRUCTIONS FOR USE

Manual Touch Panel or Remote Control Operation

POWER BUTTON)

1. Press the Power button and the machine will turn on with air flow
2. The display will show the ambient temperature (ie. the current room temperature)
3. The digital display will show **1d** (1000W) – which is the low start-up heat
4. Press the power button again and it will show **2d** (2000W) – which is the high-heat function
5. Press the power button for a third time and it will turn off the heat function and a 30 second countdown will turn the unit off.

TIMER FUNCTION

1. Press the timer button to set the time from being on for 1 – 12 hours
2. Each press of the button will increase the amount of hour by one hour per press
3. After 12 presses, the display will show '00' – and the time will be cancelled completely
4. In order to start the timer again, press and repeat

OSCILLATING FUNCTION

1. To use the oscillation, press the button and the machine will rotate 70° left and right.
2. Press the button again to stop

TEMPERATURE

1. Press the temperature button to enter heat mode
2. The temp setting is 15° – 45° C with a 1° increase per press

NOTE: If the ambient (indoor) temperature is higher than the temperature set, the heater will not turn on

NOTE: The remote control has a 5 m with a 30° angle of operation

