



Stabilizer Bar  
Installation  
video!

## STABILIZER BAR - INSTALLATION GUIDE

### TOOLS NEEDED

- 18volt+ Electric Drill
- High Quality 1/4" Drill Bit
- High Quality 1/2" Drill Bit
- High Quality 5/8" Drill Bit
- Wrench/socket 19mm, 24mm, and 27mm or 3/4", 15/16", and 1-1/16"

### INSTALLATION INSTRUCTIONS

**Step 1:** Place the hitch on its side on a flat surface then slide the hitch bracket over the gusset of the hitch. The correct location for the bracket is tight to the weld and 1" up from the bottom of the gusset. See Image A.

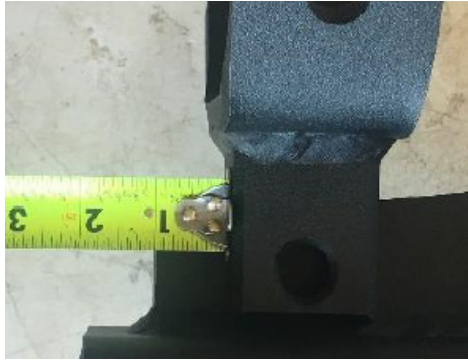


IMAGE A

**Step 2:** Hold the bracket tight against the weld and use the 5/8" drill bit to make a center point indentation in the gusset. (Using the 5/8" bit will ensure the indentation is the center in the hole). See Image B.

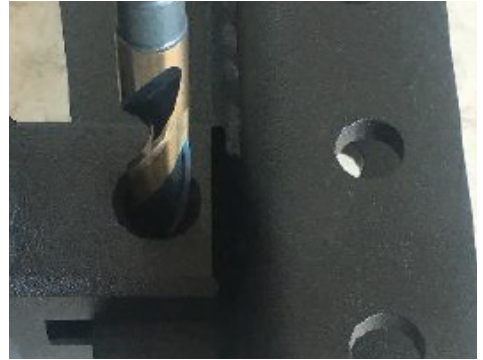


IMAGE B

**Step 3:** Once you have an indentation use the 1/4" drill bit to make the first hole all the way through the gusset. See Image C. (Be sure to drill the hole as straight as possible).

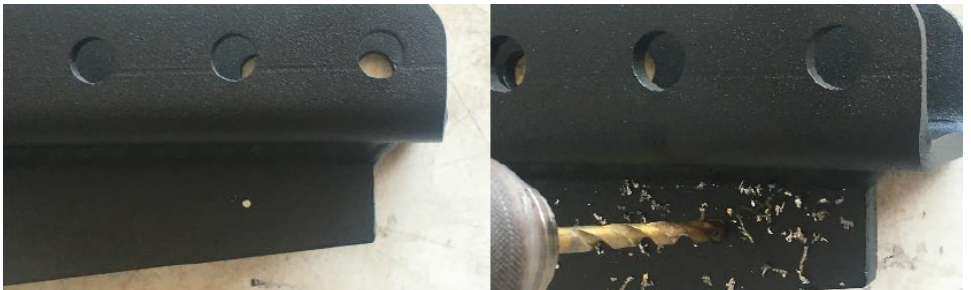


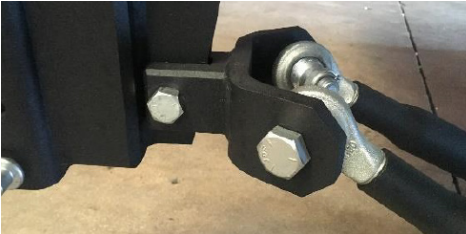
IMAGE C

**Step 4:** Drill through the ¼" predrill with the 5/8" drill bit. See Image D.



**IMAGE D**

**Step 5:** Install the hitch in the vehicle and mount the stabilizer bracket on the hitch with the 5/8" bolt supplied in the kit. See Image E.



**IMAGE E**

**Step 7:** Leave at least 3 threads exposed at the end of each bar! This will allow you to turn the bar once installed which will tighten down the hitch eliminating any wobble or slop. See Image G.



**IMAGE G**

**Step 9:** When you have located where you will need the holes use the ½" bit to drill the holes in the frame. (¼" predrill could make step 9 easier)

**Step 10:** Once you have the bars and brackets installed on the truck. Rotate the bars to pull the hitch towards the truck until it is tight. Then turn the jam nut tab until it touches the bar and tap it with a hammer this will lock the bars in place. If you have any additional questions don't hesitate to give us a call! 941-251-8110

Make certain that all bolts are in the correct location and tight before using the hitch!

You are now ready to hit the road with your new Frame Mounted Hitch Stabilizer Bars. Don't forget to tell your friends about Bulletproof Hitches and tag us on social media so we can show your tow rig on our website.

**Step 6:** Mount the stabilizer bars to the bracket on the hitch. This will allow you to gauge the location of the frame brackets. See Image F.



**IMAGE F**

**Step 8:** With the bars installed on the hitch bracket, hold up the bars to the frame rails on the truck. Use the holes in the bracket to mark where you will need holes on the frame rails. See Image H.



**IMAGE H**