

HANNAH



*Swim*  
Made In Italy



# H A N N A H

## *Within our palace walls*

Hannah Swim is a continuation from the RTW collection, 'SURYA'- which means light in Indian Sanskrit. Inspired by the kaleidoscopic colours of the Indian sunrise that glisten over the old city of Jaipur, Hannah Swim plunges us into a dream-like state of beauty and escapism. Evoking the floral patterns and oscillating shapes cast by the sun over the Indian cityscape, Hannah Swim emerges from the shadows of uncertain times.

This campaign is our interpretation of home quarantine, bringing a romantic spring summer rose garden that bursts inside the walls of our home. The otherworldly images create an interior oasis, capturing our longing to return to the sun and sea, which so deeply nourishes our body and soul.

Born out of a period of self quarantine, this nature inspired campaign speaks to the cycles of life, reminding us that this too shall pass.

Hannah Swim reawakens our senses and creative spirit. The seductive scent of spring summer that seeps through the sun-lit rose garden and is echoed in the designs of each piece, revives our hope in rebirth and renewal.

Creating a palace of beauty, colour and light within our walls, Hannah Swim transports us to the holiday of our mind.

## *Made In Italy*

@hannahartwear

[www.hannahartwear.com](http://www.hannahartwear.com)



*HALTER blue*

*HAWSWIM6*

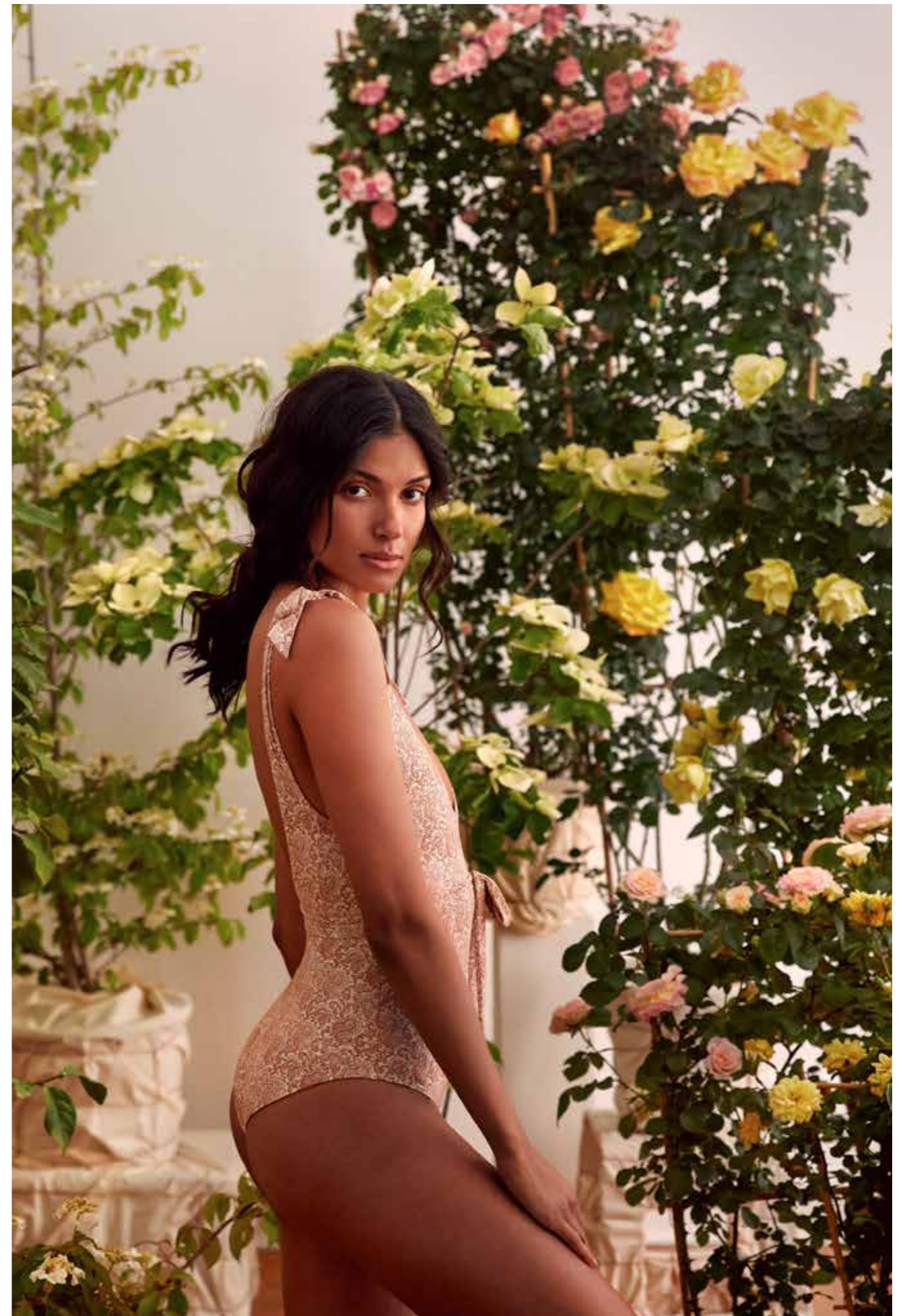




*HIGH pink bottom*  
HAWSWIM4B



*HIGH pink top*  
HAWSWIM4A



*BOW cream*  
HAWSWIM9



*HIGH green top*

HAWSWIM5A

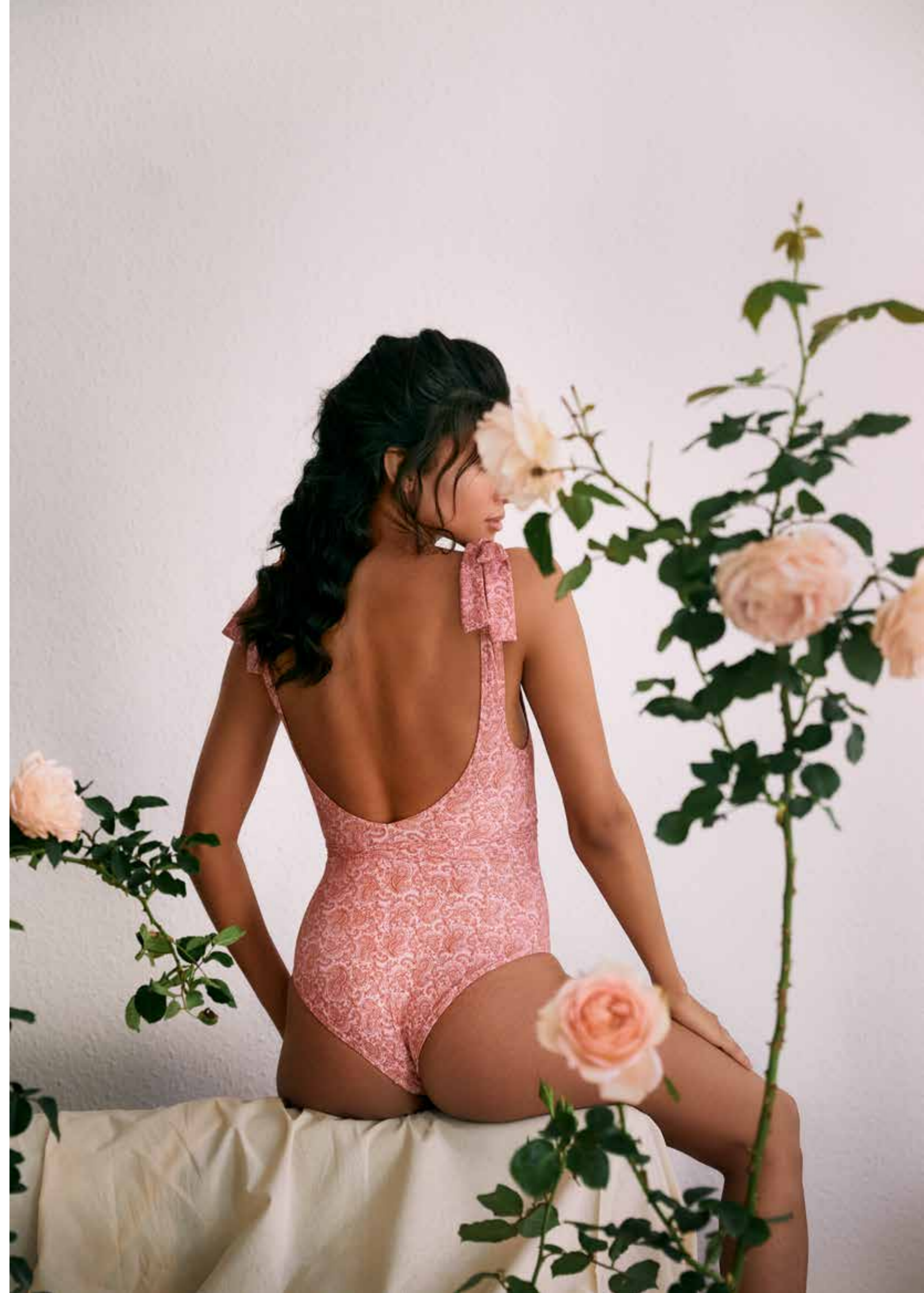


*HIGH green bottom*

HAWSWIM5B



*BOW pink*  
HAWSWIM18







*CLASSIC cream top*  
HAWSWIM3A



*CLASSIC cream bottom*  
HAWSWIM3B





*CLASSIC blue bottom*  
HAWSWIM1B

*CLASSIC blue top*  
HAWSWIM1A

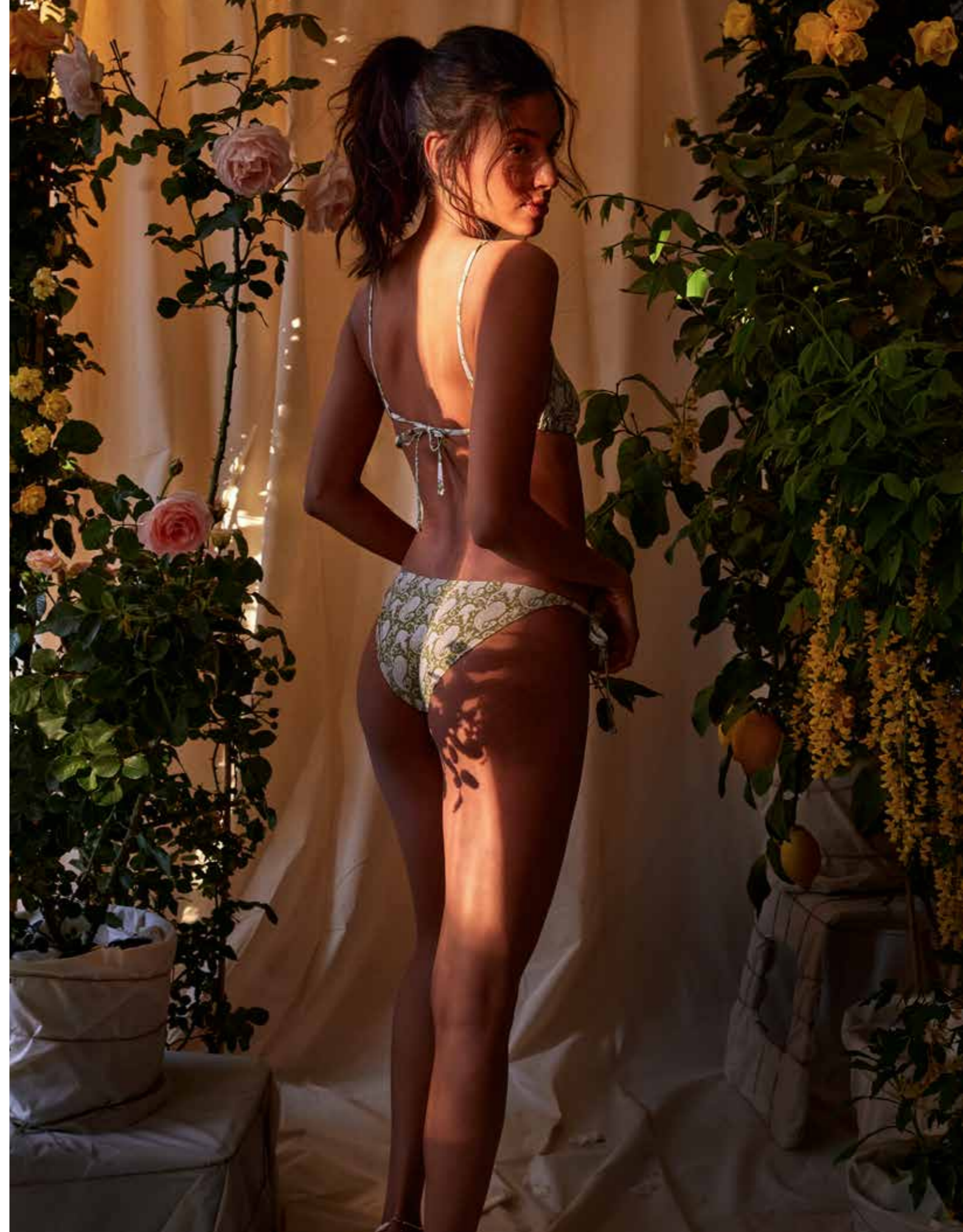




*HALTER green*  
HAWSWIM7



*CLASSIC green top*  
HAWSWIM2A



*CLASSIC green bottom*  
HAWSWIM2B

