



# Media Mount Instructions



1) Use an interior plastic pry bar to remove the fascia around the tape player



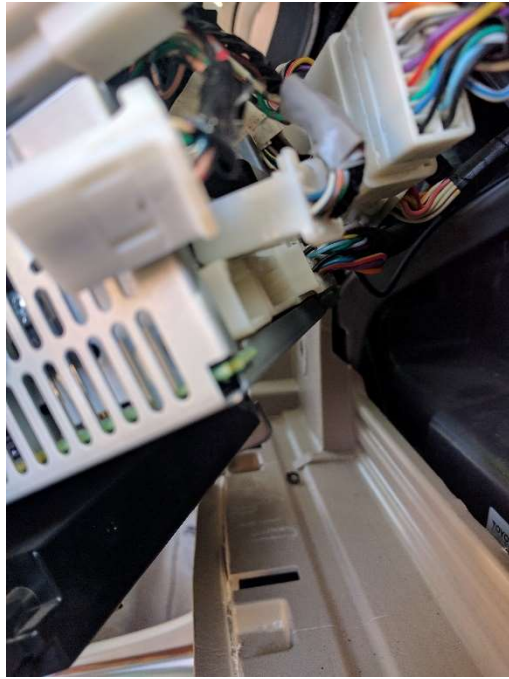
2) Remove the center differential, hazard lights, and airbag indicator plugs from the fascia and set it aside



**3) Pull the vents from both sides of the navigation screen**



**4) Remove the 4 bolts holding in the navigation and tape player. Slide the entire unit out enough to expose the plugs in the back of the unit**



**5) Unplug the 3 plugs from behind the tape deck**



**6) Remove the 4 bolts holding the tape player in place on the metal frame**



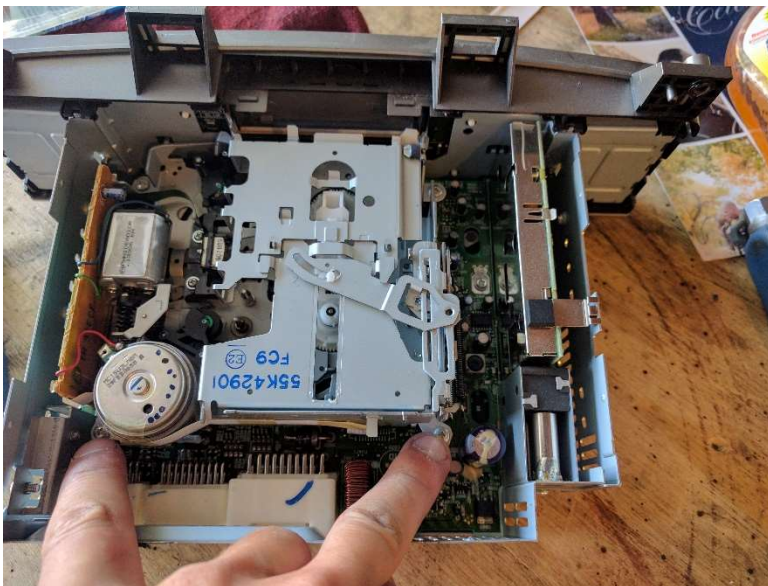
**7) Remove the 2 bolts holding the tape deck to the navigation unit**



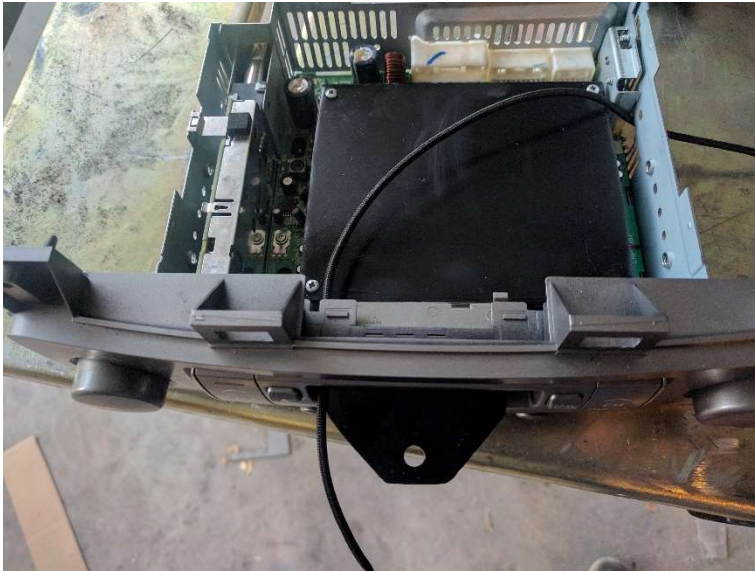
**8) Slightly pull the tab seen in the bottom of the photo to separate the tape deck from the lower row of buttons. The tape deck should be completely removable at this point**



9) Cut the tape on the backside of the tape deck, then gently pry the lid of the tape deck revealing the inside



10) Remove the 4 small screws holding in the actual tape player AND DO NOT LOSE THEM



**11) Install the Owl Expedition Media Mount using the 4 small screws, ensuring the tongue is sticking out of the tape deck slot. Now is a good time to run a charger if you intend to. Cutting or drilling a small hole in the cooling grates of the tape player works well. Ensure where you run the wire will not interfere with reinstallation**



**12) The tongue and its foam pad should rest snugly against the bottom edge of the tape deck slot as show. This is important for stability and strength**



**Reverse the process to reinstall the tape deck with the Owl Expedition Media Mount in place, add your favorite RAM™ accessories, and enjoy!**

**Don't forget to share photos of your setup on Mud/Instagram and follow/tag me on Instagram @Owl\_Expedition**

**Thank you for your support!**

If you have questions or concerns, please contact [owlexpedition1@gmail.com](mailto:owlexpedition1@gmail.com)