

# Owl Expedition DIY Rock/Courtesy Light Kit

Fitment:

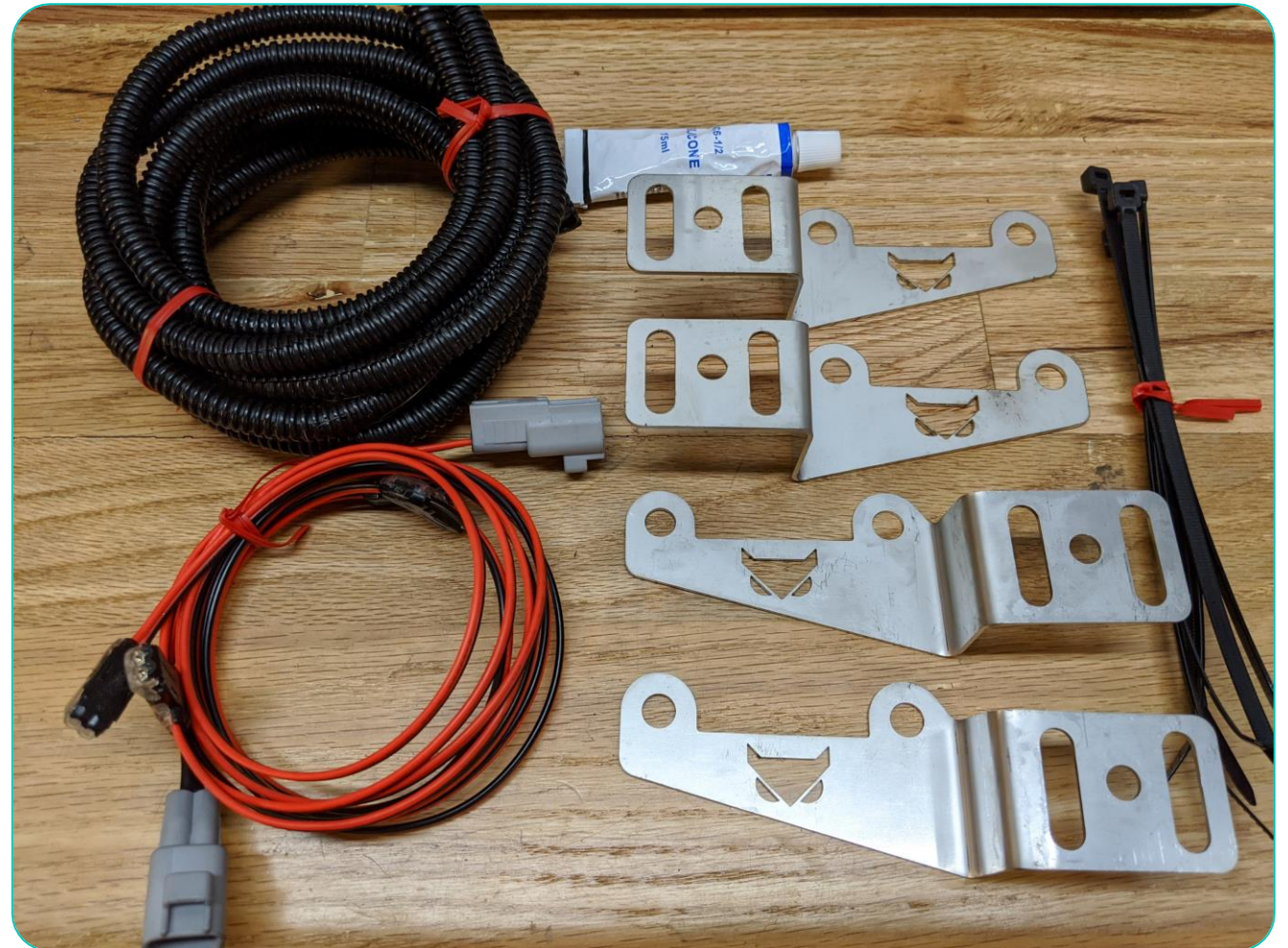
○ 1998-2006 Lexus LX470

- Read these instructions completely before purchasing and installing to ensure you are comfortable with the process.
- Altering your vehicles factory electronic systems inherently comes with the potential to cause irreversible damage. Install at your own risk.
- To ensure success, always wear the appropriate safety equipment and chose the right tool for the job.



# Parts List

- (4) 16-gauge, laser cut 316 stainless steel brackets for mounting lights to the frame
- (2) wiring harnesses, one for each side of the truck with factory plugs and wires taps
- (2) protective looms for each harness
- (6) zip ties for wire management
- (1) silicone for waterproofing wire connectors





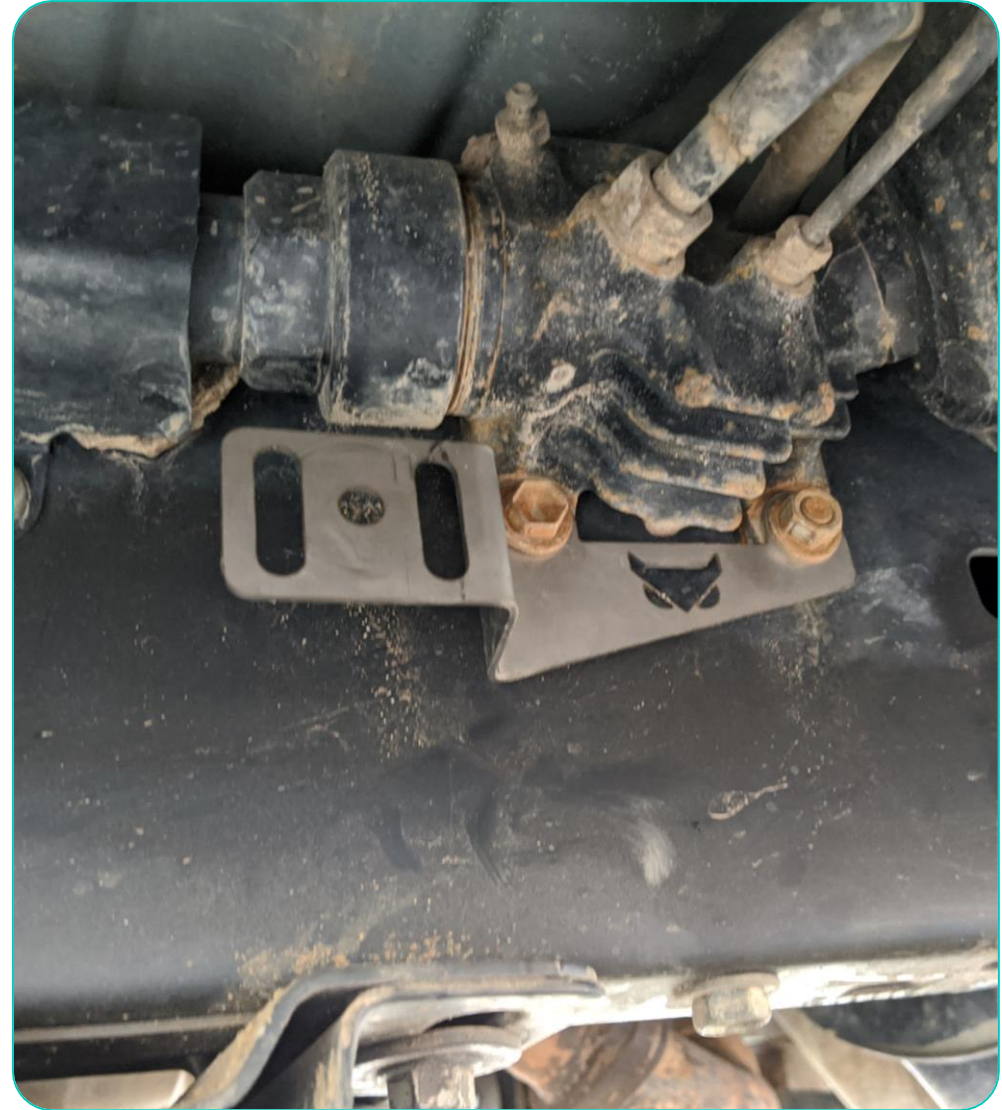
# Step 1

- Locate the four AHC accumulators on the frame under each door. Each accumulator has one nut and one bolt (pictured). Remove the nut and bolt from each accumulator in order to install the lights
- NOTE: if the AHC has been removed from your LX470, you should still have threaded inserts in the frame. If the threaded posts are still present (right side of photo) you will need (4) M8-1.25 x 16 bolts and (4) M8-1.25 nuts. If the posts are no longer present, you will need (8) M8-1.25 x 16 bolts. You will also need (8) washers. These items can be found at your local hardware store.



## Step 2

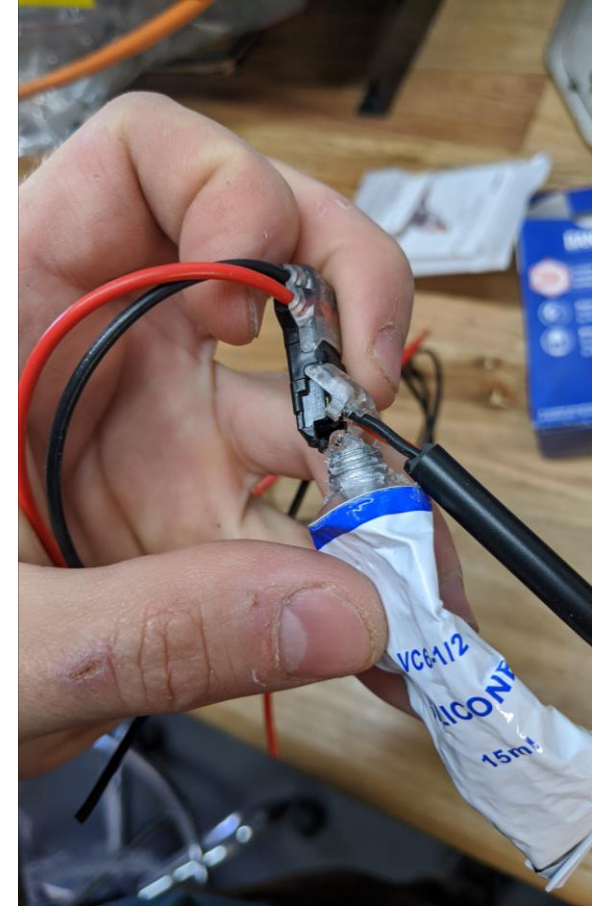
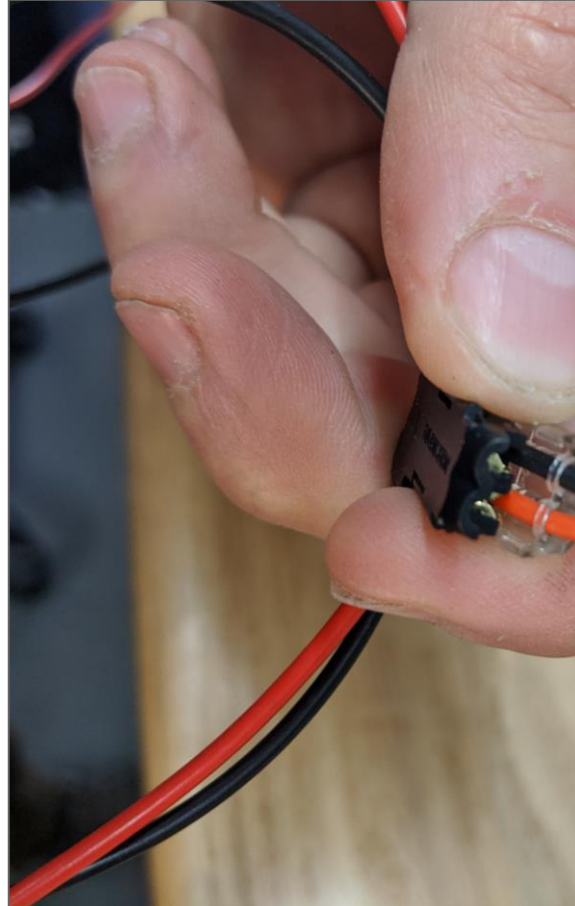
- NOTE: The plug side of each harness always goes towards the front of the vehicle. Also, the longer light mounting slots of each bracket always faces towards the closest wheel.
- NOTE: with the AHC installed, the lights bolt on top of the accumulators. Do not attempt to remove the accumulators for installation.
- Mount each bracket to each of the four mounting locations.





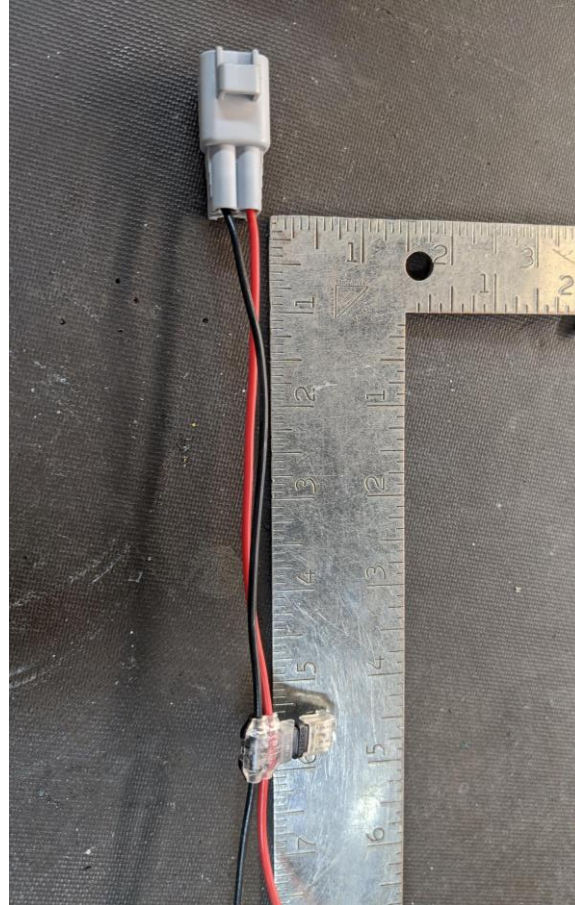
## Step 3

- For the next steps (don't do this yet, just read), when attaching the wire taps, always make sure the wires are fully inserted before attempting to close them.
- Once fully inserted, close them to about 90% then reopen
- Apply some silicone to provide a watertight seal, then using pliers, gently close the taps entirely



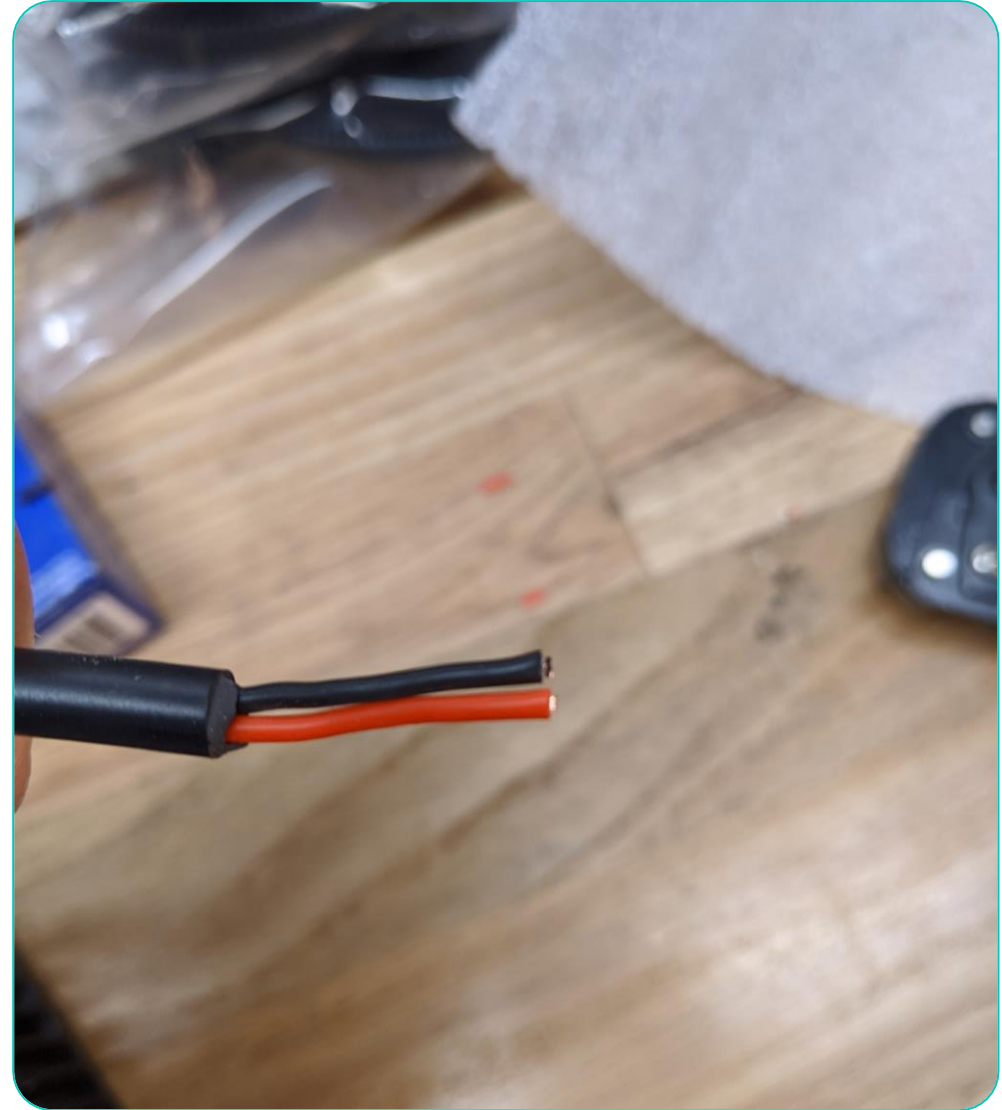
## Step 4

- Attach the T taps to each harness approximately 5.5" from the factory plug (doesn't have to be precise).
- Attach the straight taps to the ends of the harness.



## Step 5

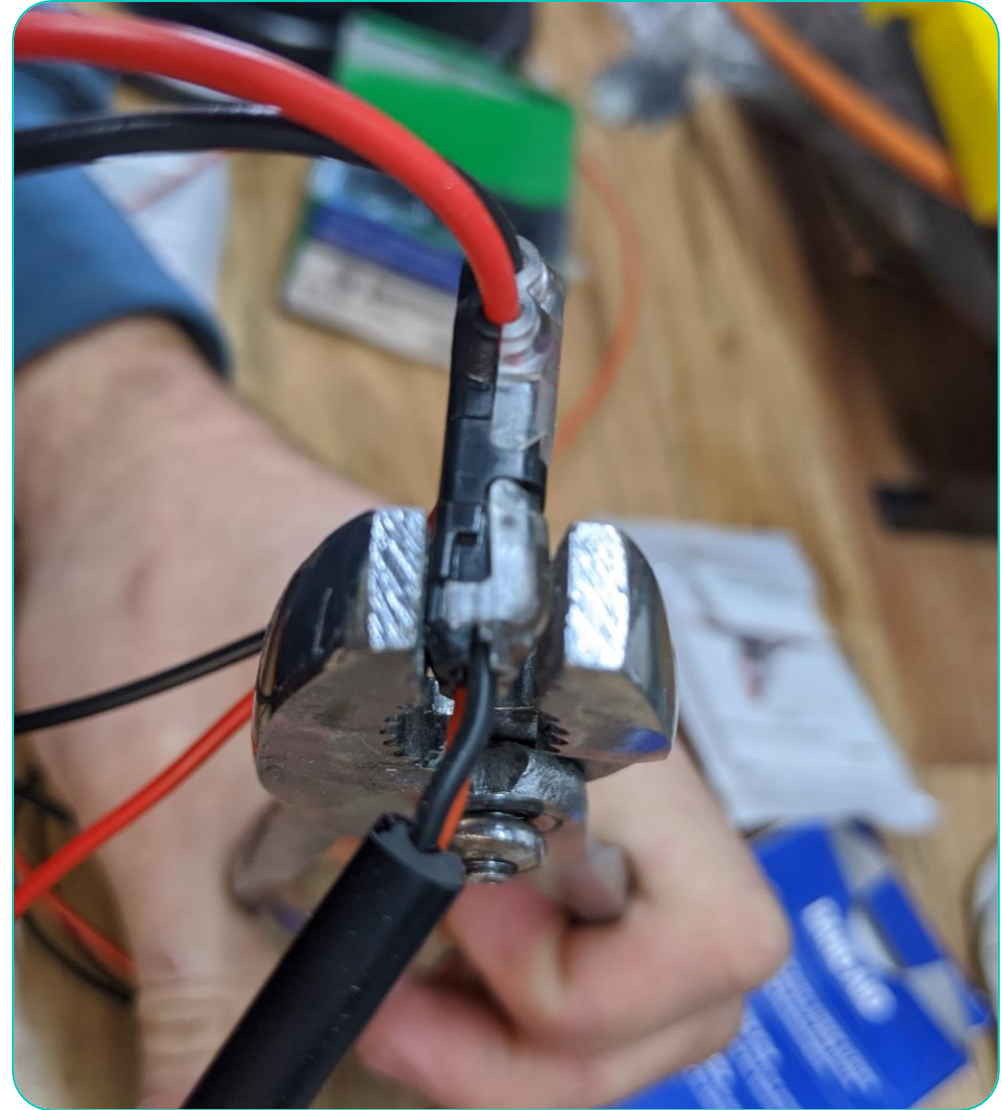
- Cut any bare wire from your lights. You want fully covered ends as show





## Step 6

- Next attach your light wires to the taps paying attention to the diagram on the taps to match red to red and black to black
- Follow the prior instruction, applying silicone to each tap.
- Using a pair of pliers, gently close the tap until the clips on either side are securely clipped





## Step 7

- Cover the wiring harness with the provided loom protector. Its suggested to wrap the loom with electrical tape at the ends and the T connector to ensure the wires do not come out of the loom.
- Mount your lights to the brackets on the frame ensuring to run the wiring up above sliders. Zip tie all wiring out of the way.
- Connect the harness to the factory plug



Enjoy your new Owl Expedition Rock/Courtesy  
Lights!

Thank you for your support!

