



PICKEX[®]

Animals getting over your fences?

If you have animals getting over a fence and you need to stop them, then you either build a new taller fence or raise the height of the existing one.

The fence may have sunk into the ground due to silt build up or post subsidence, or it simply wasn't high enough in the first place. Either way, in an agricultural setting, large numbers of animals other than stock on your property are either going to mean a loss of pasture and reduced stocking rates, or your livestock become a food source for predators such as wild dogs so both outcomes will have an impact on your bottom line.

If you can slow down or greatly reduce the movement of animals getting onto your land or your stock getting out, it can have a big impact on profitability. The quicker you deal with the problem, the sooner a solution will provide a return on your investment.

The standard solutions

Up till now, most land owners raised their fences by either putting in taller posts, using bolt on brackets, or welding on an extension of some description.

Putting in taller posts is expensive and bolt on brackets mean having to remove the wire from the posts then tying it back on, which is time consuming. Welding is not always possible because the poor quality steel found in many newly manufactured pickets is often not weldable. There is also the obvious fire risk of welding over dry grass and the problem of getting a welder to the posts.

Some will say, pull out the fence and start from scratch. But you are not going to be keen on doing that if you have spent thousands of dollars on a not so old fence.

What can be done?

PICKEX POLE STARS are made in 300, 450, 600 and 900mm lengths. Best described as a post extension sleeve, they can be used in a variety of ways or in conjunction with a standard STAR picket or part STAR picket, to raise the height of the fence to virtually any height you may need without removing the existing wire.

Made from high tensile galvanised steel PICKEX POLE STARS are a strong and robust item. They fit both the STAR pickets used in Australia and all Tee posts commonly sold in the USA. With the addition of a POLE STAR MAX, they can also be used to extend BEEFY or MAXY posts. Raise your fences quickly, easily and cost effectively with fully Australian-made PICKEX POLE STARS.

The Versatile Solution

The real beauty of the POLE STAR system is versatility. They can be used as a stand-alone item or in conjunction with the PS45 brackets to create the right barrier for your situation.

POLE STARS allow you to raise the fence height to over 3 metres or 10 foot using another picket or post. This can be important on steep sloping ground as the actual height the animal has to jump may be lower on the side of a hill or gully. If necessary, a POLE STAR can simply be removed and replaced with ease, without the need to undo any wires.



Offset Fences

The PS45 bracket gives you the ability to have either a left or right facing angle on the top of the fence with variable offset length. With the addition of a PSTY bracket, a return can be created in both directions to make either T or Y configurations of variable width.



PS45 Bracket



PSTY Bracket



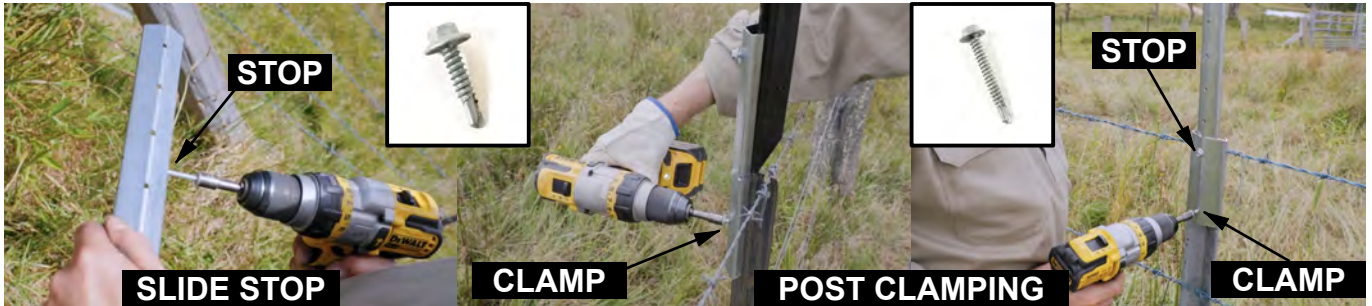
Cats and Dogs

A return or offset at the top of a fence can be highly beneficial as it makes it a lot harder for climbing animals such as cats to scale the fence. And if an animal trying to jump the fence gets caught up, there is a much greater likelihood it will free itself unharmed and not get tangled up in the lower wires.



Fixing and Fastening

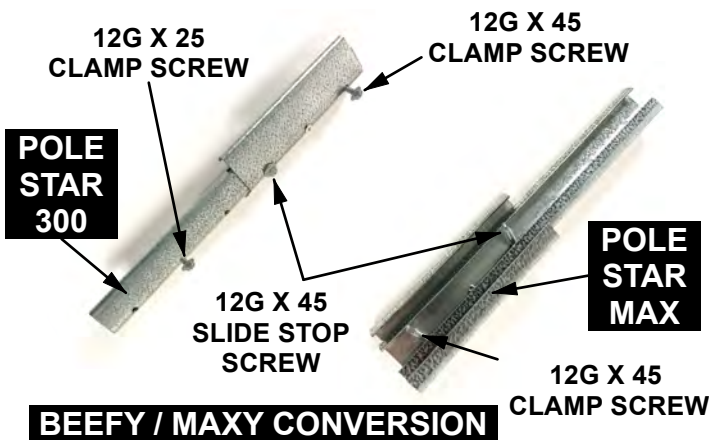
All the PICKEX POLE STAR range are used in conjunction with commonly available 12 gauge 1" inch (25mm) self drilling TEK screws. They can be used as a stop to keep the POLE STAR on top of the post, clamp it to the picket or create a point to attach wire. 2" inch (45 or 50mm) long screws are used as a stop to keep a POLE STAR MAX at the top of the post or clamp it to the picket or post.



All PICKEX can be fastened to steel or timber posts using any of the holes on the back ridge.



This is important as there is always at least one point on the fence, such as a gate, where you may need to improvise a solution to keep a continuous barrier.



POLE STAR 300s can be used with short STAR pickets or pre-cut parts of recycled pickets to raise the fence to virtually any height.

Differing Picket and Post sizes

You may have differing types of posts on your property, and there are many varieties of posts on the market so, it would be virtually impossible to have a perfect fit for all of them. A great feature of the POLE STAR shape is that it can easily be adjusted to make a tight fit or have it slide down a picket with ease.



If the POLE STAR or POLE STAR MAX won't fit over the post, simply take a hammer and (placing it with the cut edges on a hard flat surface) strike along the spine of the POLE STAR, to widen it out. You may have to do this more than once until it fits.



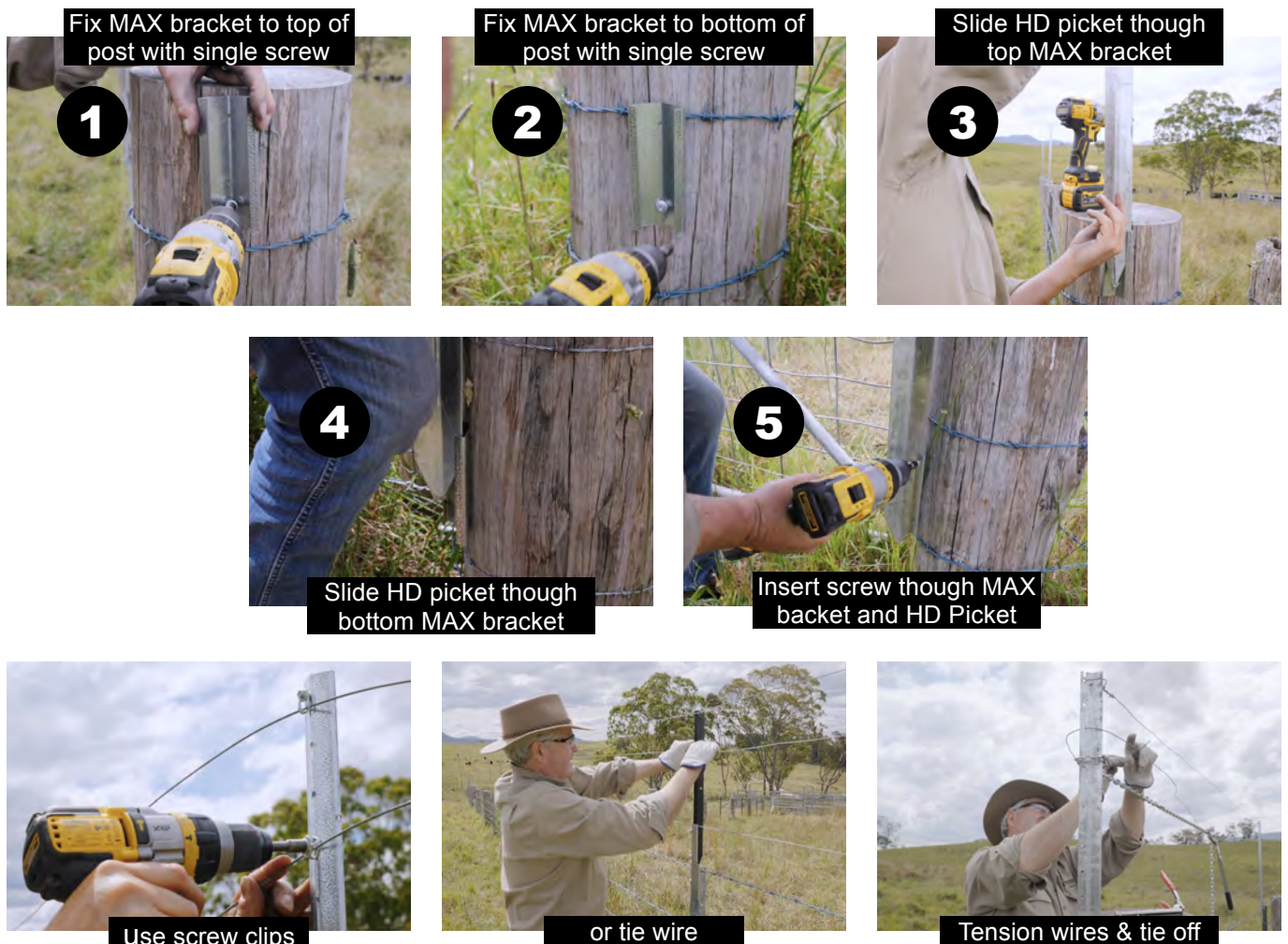
On the other hand, if you find they are a bit loose, place one edge of the POLE STAR on a hard surface and strike the hammer along the opposite edge of the POLE STAR to close it up until it is a neat fit.

Tensioning Posts and End Assemblies

If you are trying to stop animals jumping the fence, then pairs of two wires close together are better than one wire by itself as the animals can see the pair better, especially when moving at speed.

The key point is that you do not need to have a lot of tension on the wire up high as there is not going to be any stock pressure high on the fence. You simply need to add a strong riser to the end assembly to secure the wire and apply light tension. The main aim is to provide a visual deterrent.

To easily create a high strainer post, get long heavy duty (HD) BEEFY OR MAXY STAR pickets for each end post, then fix POLE STAR MAX brackets at the top and bottom of each corner post with a single timber or steel fixing screw. Slide a HD picket down through both brackets then insert a self drilling steel screw through both the MAX bracket and the HD picket to fix the picket to the MAX bracket (see the steps below).



We advise people putting up the fence up in stages and leaving the high traffic areas till last, so the animals have time to learn where the fence is. Remember, a 60 to 70 kg animal hitting the fence at speed is going to damage most agricultural fencing.

Raising Electric Fences

It may be horses, dogs or even camels that you are trying to prevent putting pressure on a fence.

One of the best ways to prevent animals getting over a fence or keep them apart and stop them fighting is to use an electric fence, as animals can sense the fence is there without contacting it.

So, if you are looking to raise a fence and add an electric hot wire, a variety of insulators and offsets can be used with PICKEX POLE STARS to achieve the right solution for your needs.



CERAMIC INSULATORS are the most long lasting and versatile solution for both direct to post or offset hot wire setups



PLASTIC INSULATORS are made from UV and heat resistant PVC. They offer the most cost effective and easy to install electric fence solution.

There are several well known companies (including DATAMARS and GALLAGHER) who supply plastic insulators that can easily and quickly be fixed to PICKEX using self drilling screws.



Davo's Fencing Clips have wire saddles that allow you to fix either ceramic insulators, plain wire or plastic tubular insulators to PICKEX with a single screw. Find their products at davosfencingclip.com

These are just some of the ways PICKEX and POLE STAR can be used. Printable drawings for all the ideas shown in this brochure can be downloaded from our website at wireman.com.au

If you have any questions, please get in touch at sales@wireman.com.au