

Common causes of Erectile Dysfunction and Impotence:

- Diabetes
- high blood pressure/cardiovascular diseases
- prostate surgery
- vascular diseases (Arteriosclerosis)
- heart attack and stroke
- elevated blood lipids
- Depression or other mental illnesses
- neurological diseases (e.g. Multiple Sclerosis, Paraplegia)
- vascular diseases of the erectile tissue of the penis
- kidney or liver insufficiency
- medication (e.g. against high blood pressure, cardiac arrhythmias, lipid-lowering agents, anti-inflammatories, antidepressants, diuretic drugs)
- smoking
- excessive alcohol consumption

Solution:

With one or more of these conditions the vacuum therapy has been effective with low side effects.

It is an easy to use alternative for drug therapy.

Your sexual healthcare.

The vacuum therapy should not be used if you suffer from:

- Sickle Cell Anemia
- Leukaemia
- bone marrow tumours

The vacuum therapy should only be used after consulting with your doctor if you suffer from:

- severe blood coagulation disorders

If you're uncertain, please ask your doctor or call us.

Product information

Active³
Erection System



EAN 4013273001915
Art.-Nr. AES 3
Medical device



Manual
Erection System



EAN 4013273001175
Art.-Nr. MES 01
Medical device



Manufacturer:

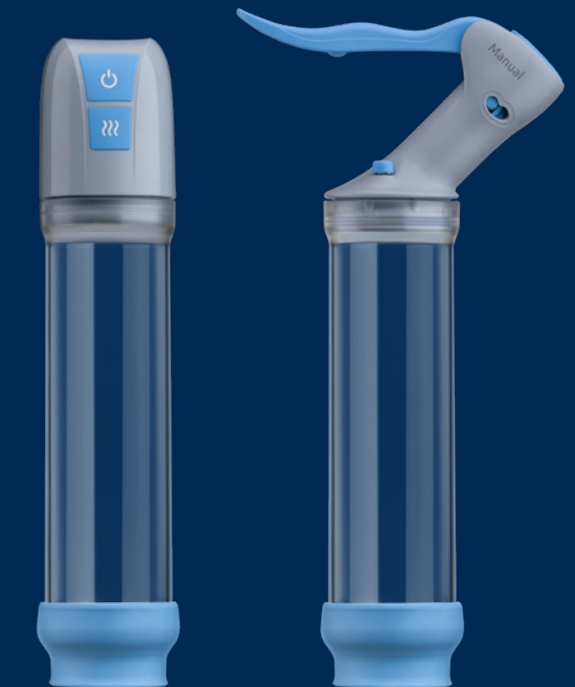
KESSEL medintim GmbH
Nordendstr. 82 – 84
64546 Mörfelden-Walldorf
Germany

E-Mail: service@medintim.de

www.medintim.de

05.03.2021

Vacuum therapy for Erectile Dysfunction

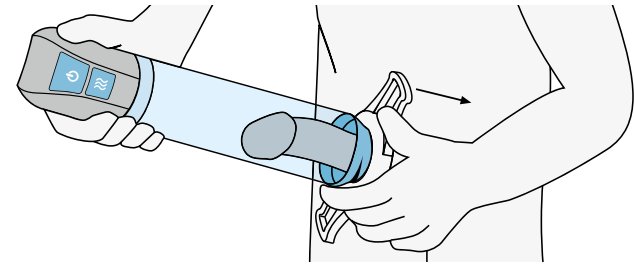


Active³ & Manual Erection System

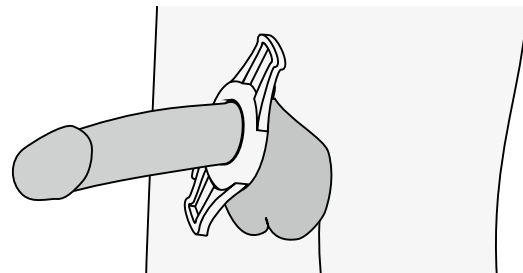
Medintim

Application

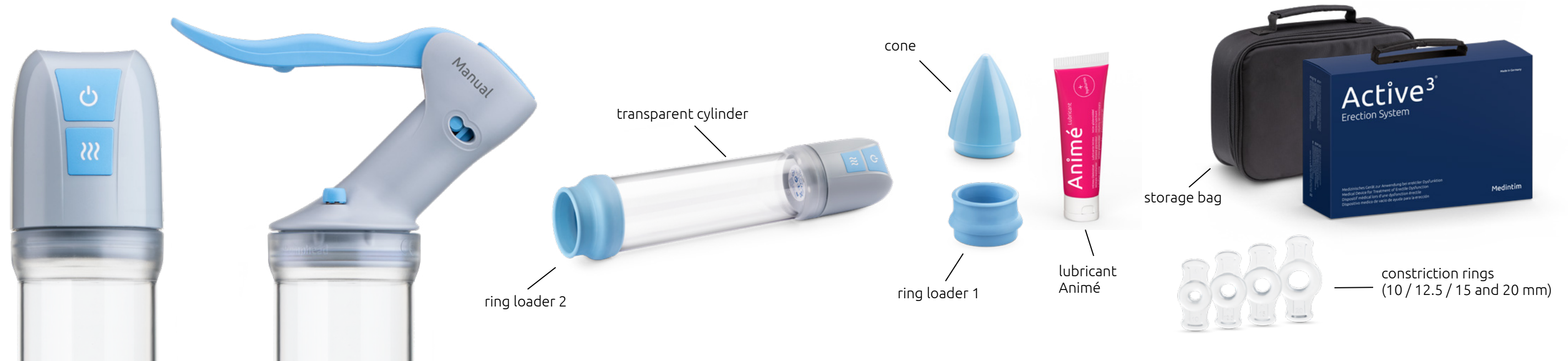
The Active3® Erection System and the Manual Erection System are medical aids for vacuum therapy to be used for treating Erectile Dysfunction (Impotence). During vacuum therapy, the erection is achieved by negative pressure. The vacuum pump generates negative pressure in the cylinder around the penis.



To achieve this, the cylinder is first guided over the penis. Then the pumping process is started. The vacuum created in this process causes additional blood flow into the erectile tissue. That leads to a stiffening of the penis. Now a constriction ring is slipped over the shaft of the penis.



When the cylinder is removed, the constriction ring prevents the drainage of blood and thus maintains the erection. With an erection maintained this way, normal and satisfying sexual intercourse is possible. The constriction ring should not be worn more than 30 minutes without interruption.



Active3® Erection System

Components:

- electric, rechargeable pump head
- transparent cylinder (inner diameter 53 mm, length 200 mm)
- ring loader 1 and 2
- cone (for pushing on a constriction ring)
- 4 different constriction rings (inner diameter 10/12.5/15 and 20 mm)
- charging cable, USB plug-in power supply unit
- Animé lubricant 50 ml
- instructions for use
- storage bag

2 years warranty on the pump head

Manual Erection System

Components:

- manual pump head
- transparent cylinder (inner diameter 53 mm, length 200 mm)
- ring loader 1 and 2
- cone (for pushing on a constriction ring)
- 4 different constriction rings (inner diameter 10/12.5/15 and 20 mm)
- Animé lubricant 50 ml
- instructions for use
- storage bag

2 years warranty on the pump head

Differences Active3® and Manual

The main difference between the two systems is the **Manual** Erection System working quietly (discretely) creating a negative pressure. **The Active3®** Erection System on the other hand is more comfortable in handling.

Both devices are mutually compatible, i.e. the pump head always fits the cylinder of the other system.

Both devices are high quality, certified medical devices, manufactured in Germany. Ordering spare parts and seeking personal advice are always possible at any time after purchase.

Made in Germany

Advantages

- restoration of erectile function
- significant improvement of the healing successes (blood circulation) e.g. after prostate surgery
- no known side effects
- long lasting and reusable; may be used as often as desired
- no interactions with drugs
- simple and safe application