

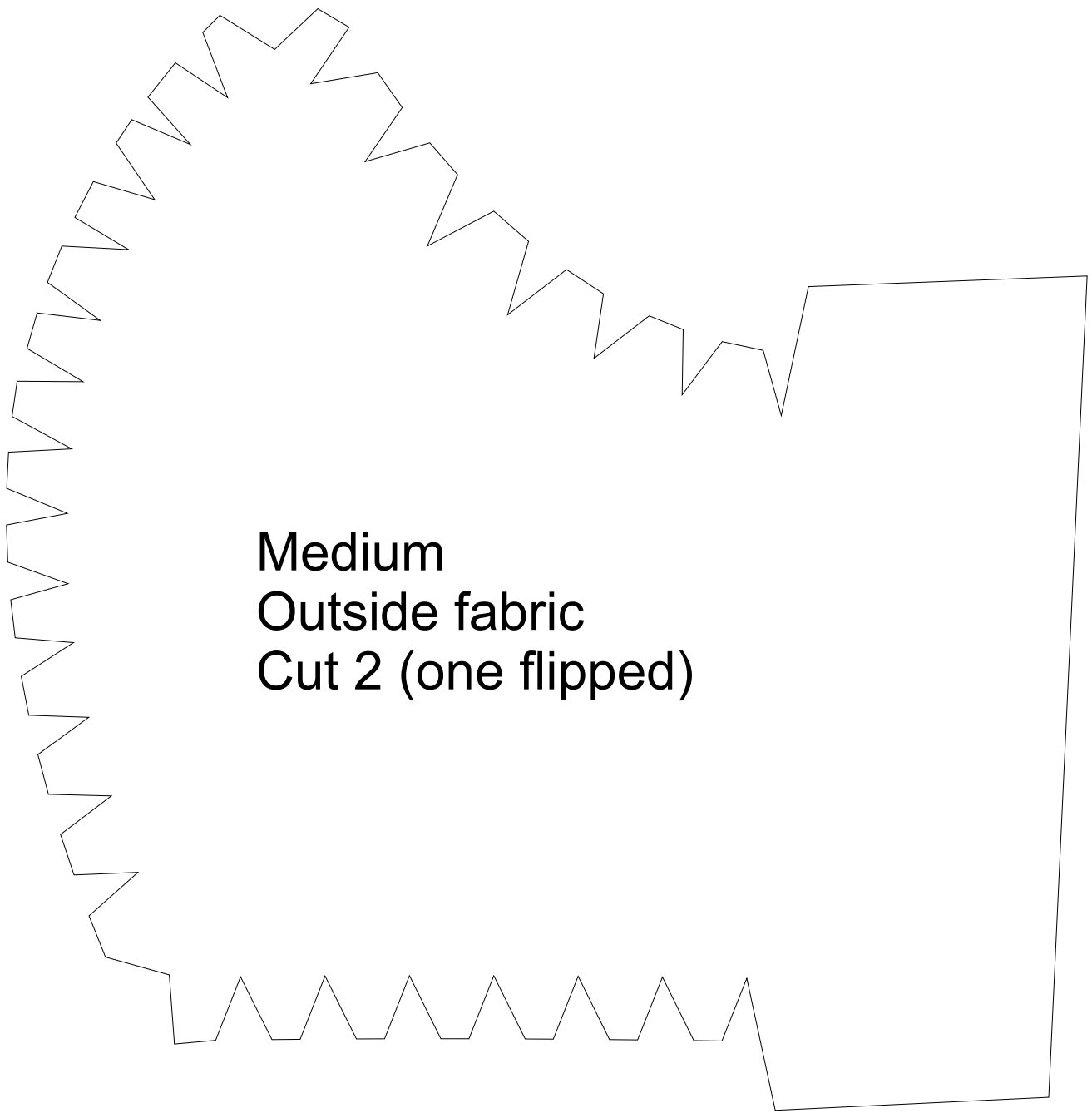
**Small
Outside fabric
Cut 2 (one flipped)**

**Small
Inside fabric
Cut 2 (one flipped)**

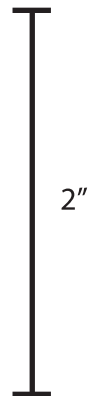
2"



For more information on this pattern, visit <https://chasestreetae.com/blogs/news/slow-the-spread-with-cloth-face-masks>



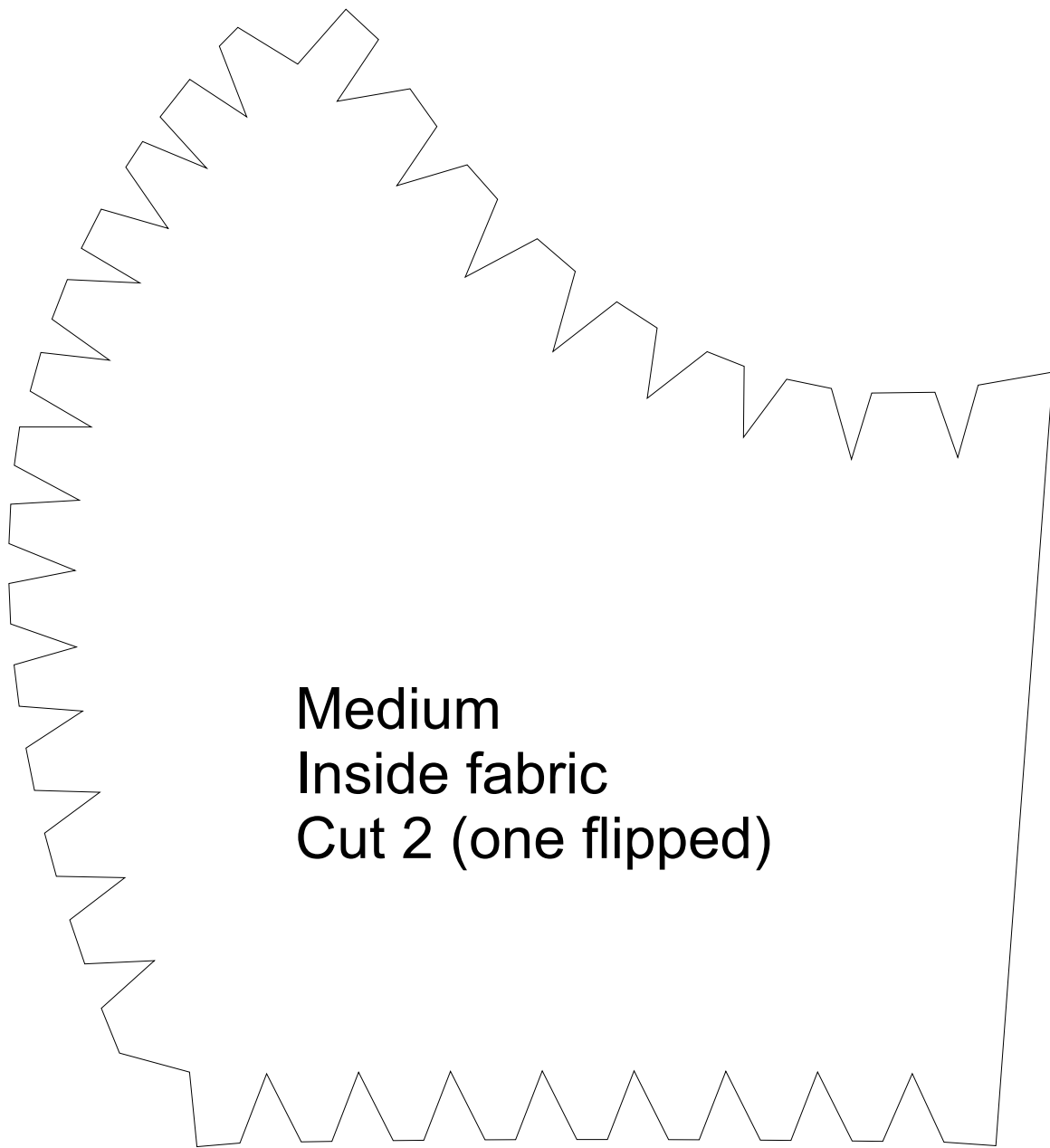
Medium
Outside fabric
Cut 2 (one flipped)



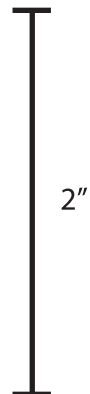
2"



For more information on this pattern, visit <https://chasestreetae.com/blogs/news/slow-the-spread-with-cloth-face-masks>



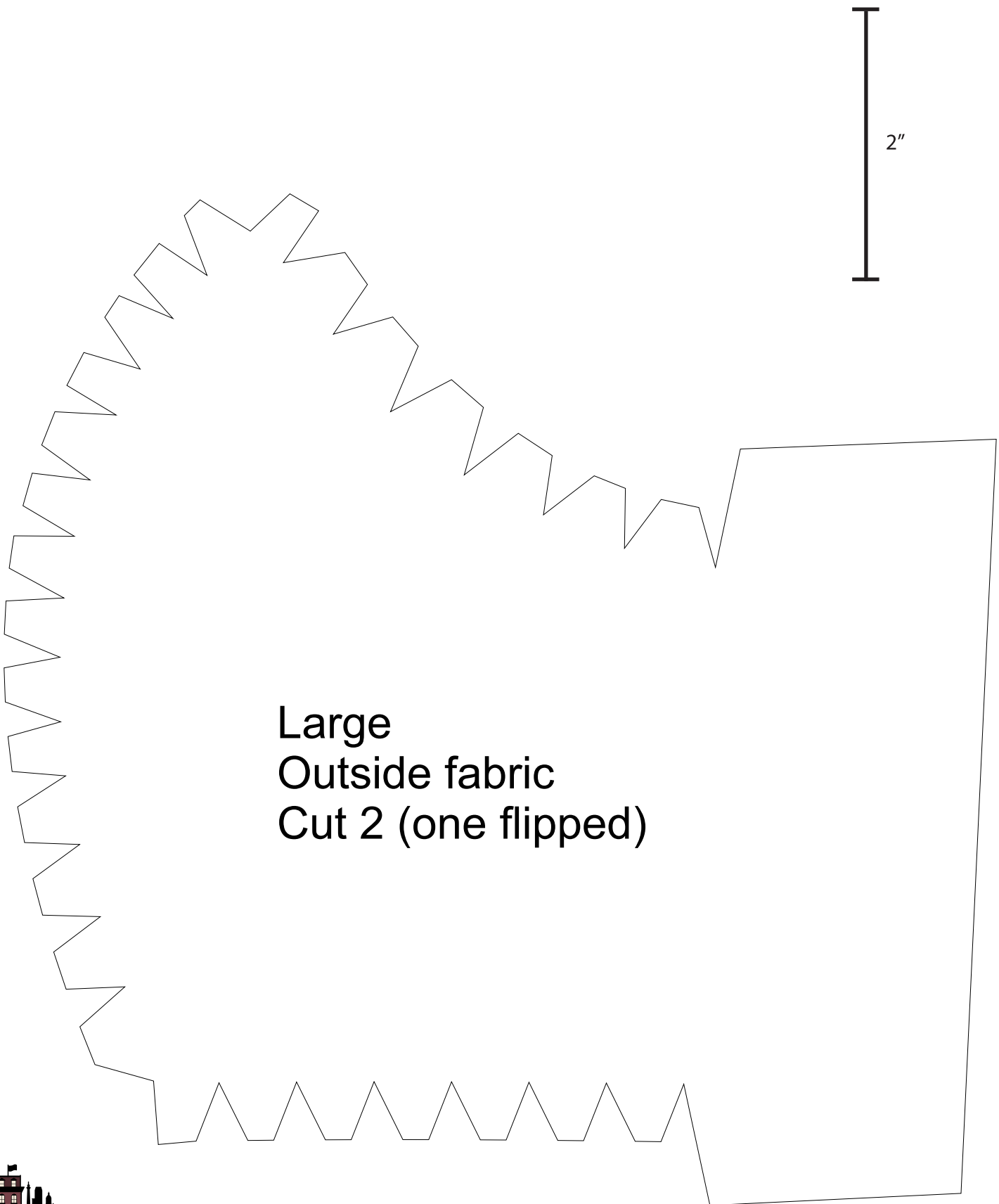
Medium
Inside fabric
Cut 2 (one flipped)



2"



For more information on this pattern, visit <https://chasestreetae.com/blogs/news/slow-the-spread-with-cloth-face-masks>

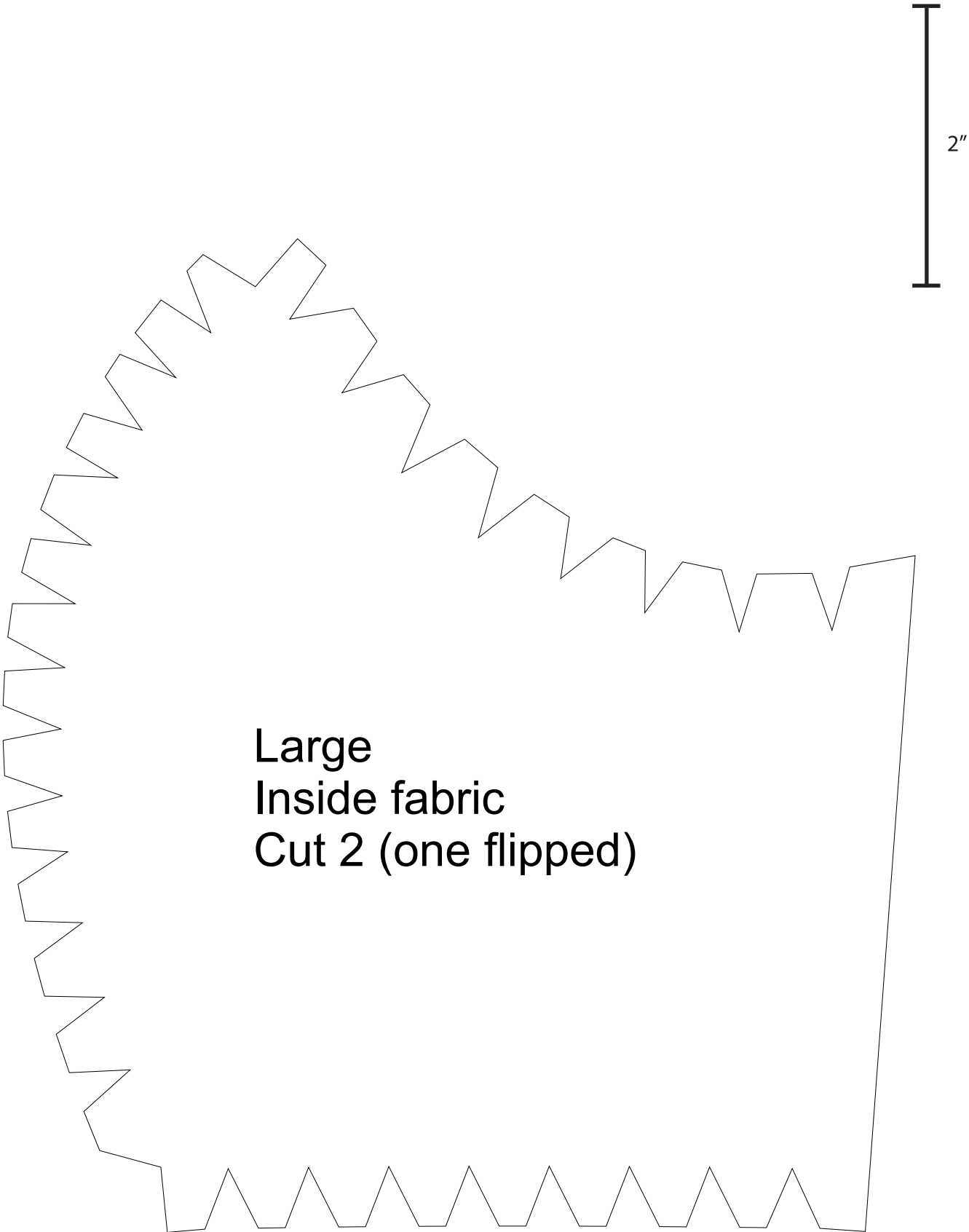


2"

Large
Outside fabric
Cut 2 (one flipped)



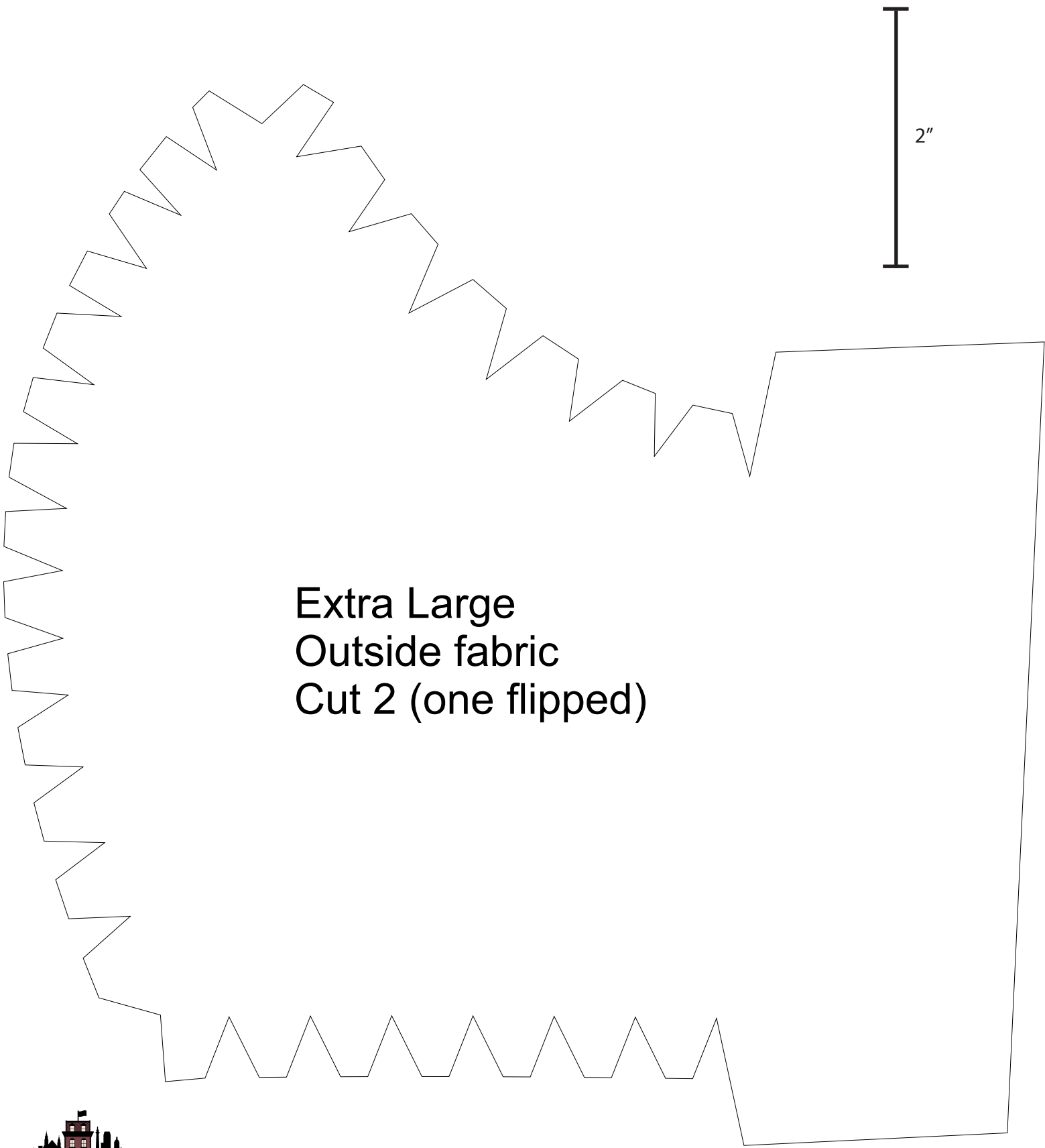
For more information on this pattern, visit
<https://chasestreetae.com/blogs/news/slow-the-spread-with-cloth-face-masks>



Large
Inside fabric
Cut 2 (one flipped)



For more information on this pattern, visit
<https://chasestreetae.com/blogs/news/slow-the-spread-with-cloth-face-masks>

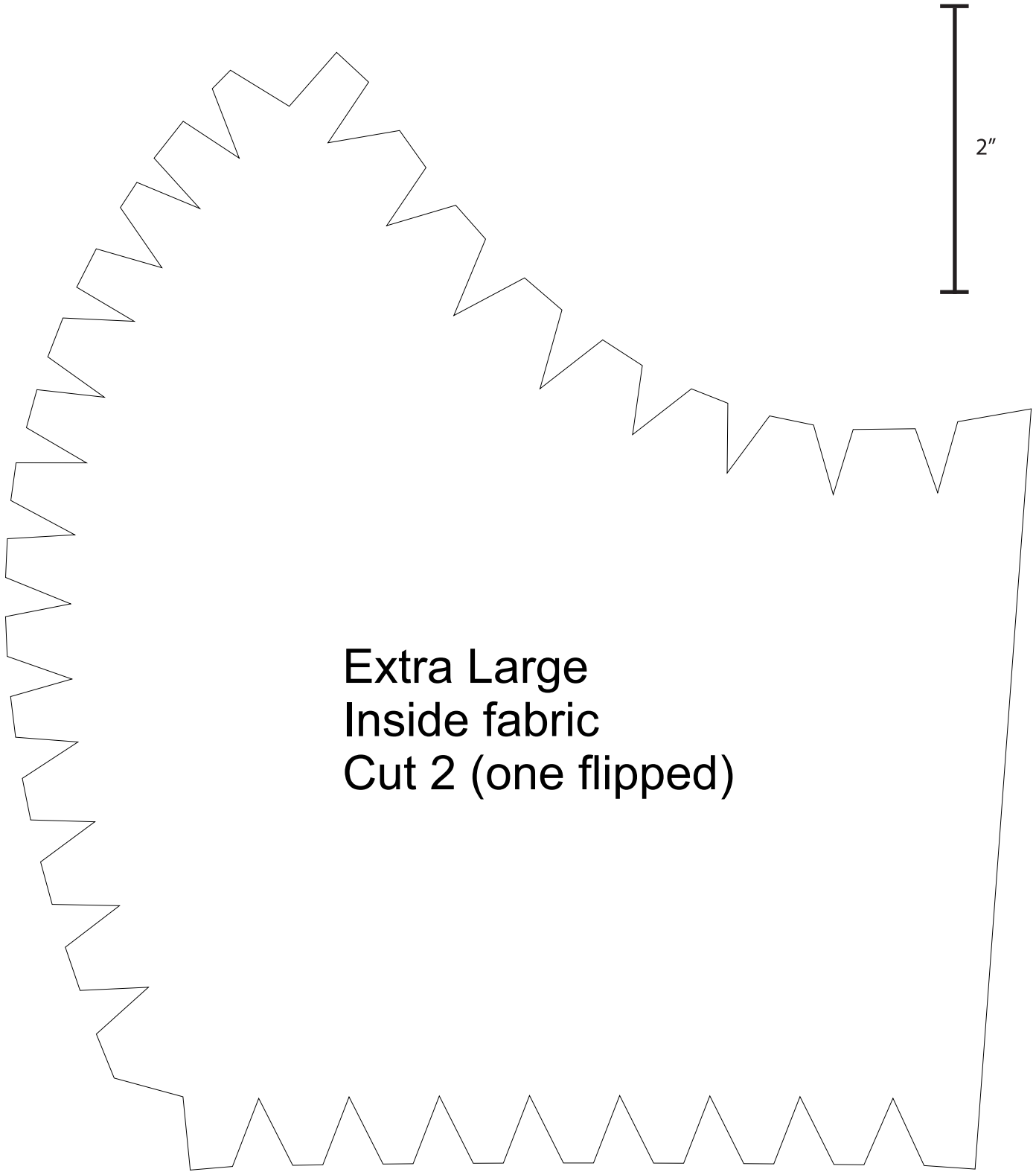


2"

**Extra Large
Outside fabric
Cut 2 (one flipped)**



For more information on this pattern, visit <https://chasestreetae.com/blogs/news/slow-the-spread-with-cloth-face-masks>



Extra Large
Inside fabric
Cut 2 (one flipped)



For more information on this pattern, visit
<https://chasestreetae.com/blogs/news/slow-the-spread-with-cloth-face-masks>